

# A d d e n d u m

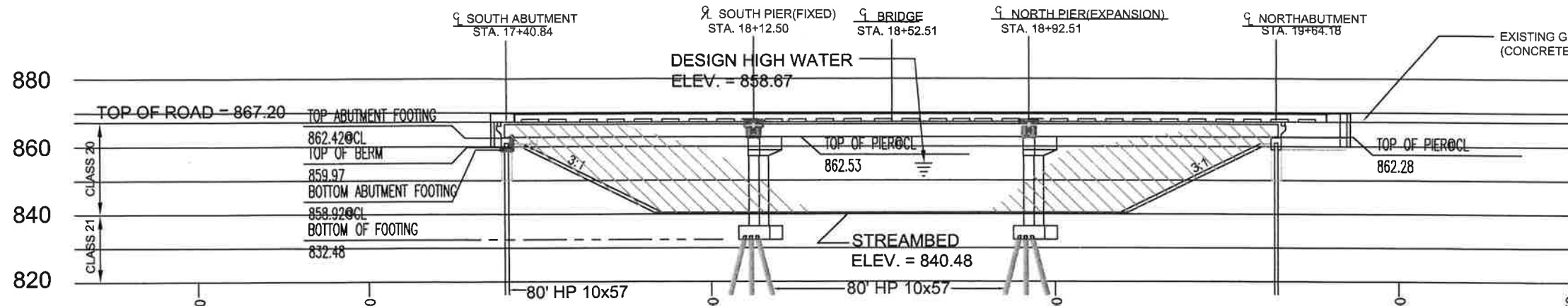
Iowa Department of Transportation  
Office of Contracts

Date of Letting: September 20, 2016  
Date of Addendum: September 15, 2016

<b>B.O.</b>	<b>Proposal ID</b>	<b>Proposal Work Type</b>	<b>County</b>	<b>Project Number</b>	<b>Addendum</b>
002	50-C050-112	BRIDGE REPLACEMENT - PPCB	JASPER	BROS-C050(112)--5F-50	20SEP002A01

Make the following changes to the PLAN:

Replace SHEETS 4 and 8 of 10 with attached SHEETS 4 and 8 of 10.

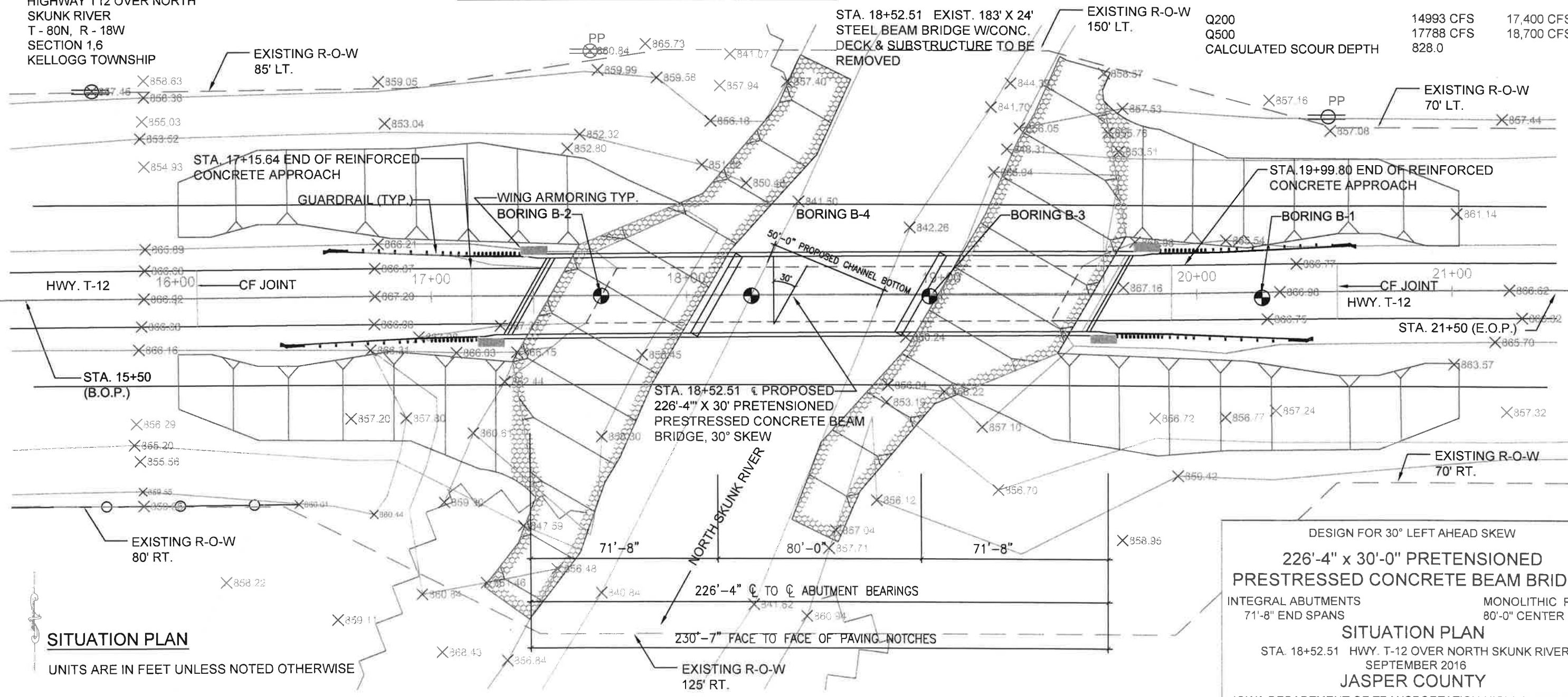


### HYDRAULICS

	EASH	STREAMSTATS
DRAINAGE AREA	117 SQ. MI.	
STREAM SLOPE	0.000795 FT./FT.	
BRIDGE WATERWAY AREA	3244.1 S.F.	
DESIGN VELOCITY	3.92 FPS	
DESIGN HIGH WATER ELEV.	860.62	
Q50	11,002 CFS	11,800 CFS
FREEBOARD	4.61 FT.	3.01 FT.
MAX BACKWATER DEPTH	0.17 FT.	0.44 FT.
STAGE ELEV.	860.62	
Q100	12,989 CFS	13,700 CFS
FREEBOARD	3.90 FT.	2.29 FT.
MAX BACKWATER DEPTH	0.25 FT.	0.68 FT.
STAGE ELEV.	861.33	
Q200	14993 CFS	17,400 CFS
Q500	17788 CFS	18,700 CFS
CALCULATED SCOUR DEPTH	828.0	

**LOCATION**  
 JASPER COUNTY  
 HIGHWAY T12 OVER NORTH  
 SKUNK RIVER  
 T - 80N, R - 18W  
 SECTION 1,6  
 KELLOGG TOWNSHIP

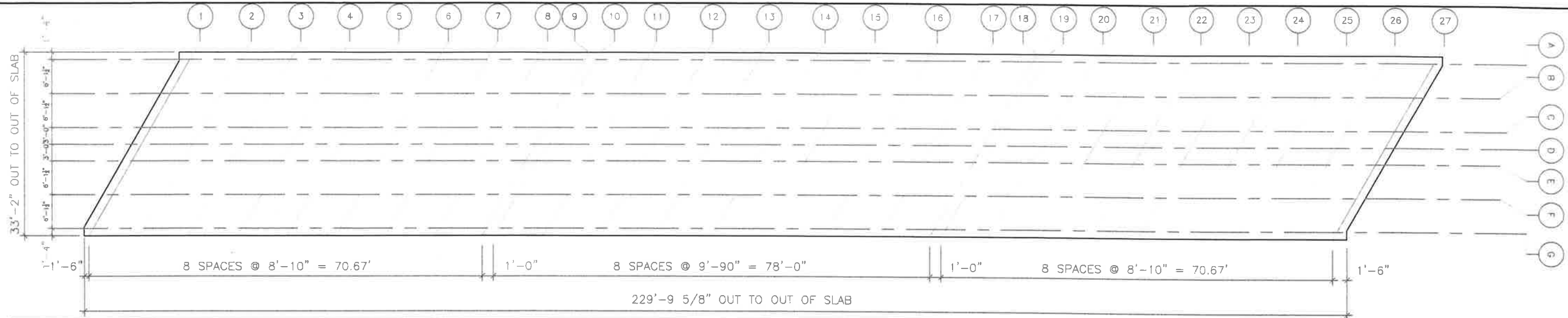
**LONGITUDINAL SECTION NEAR ROADWAY**



**SITUATION PLAN**

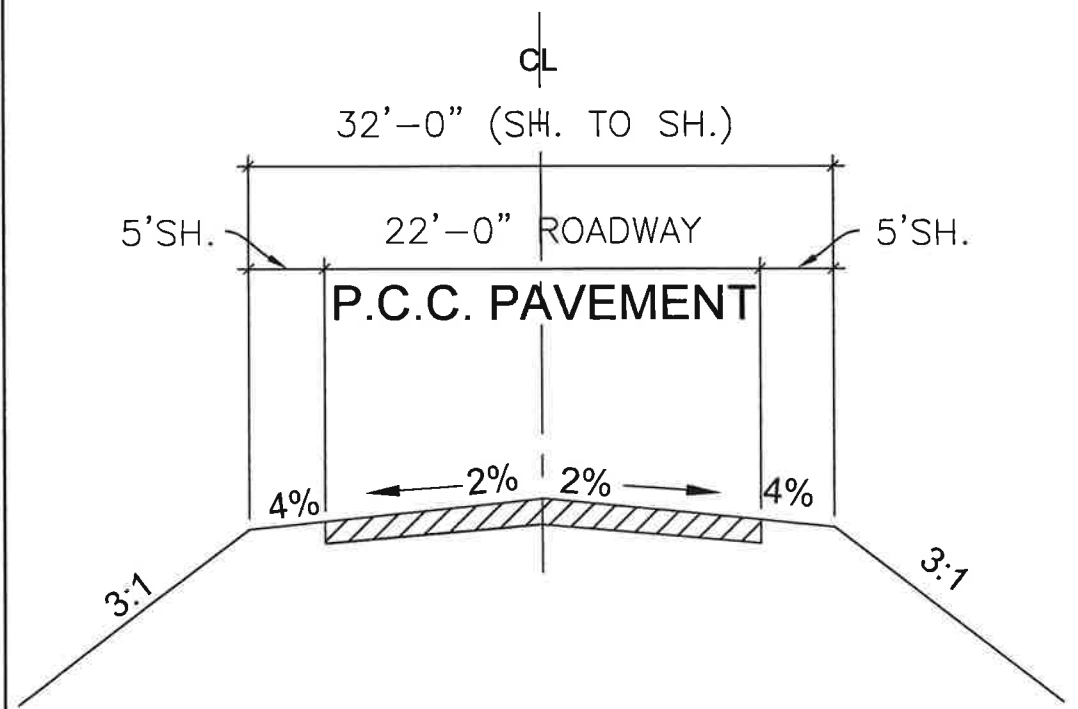
UNITS ARE IN FEET UNLESS NOTED OTHERWISE

DESIGN FOR 30° LEFT AHEAD SKEW  
**226'-4" x 30'-0" PRETENSIONED PRESTRESSED CONCRETE BEAM BRIDGE**  
 INTEGRAL ABUTMENTS  
 71'-8" END SPANS  
 MONOLITHIC PIERS  
 80'-0" CENTER SPAN  
**SITUATION PLAN**  
 STA. 18+52.51 HWY. T-12 OVER NORTH SKUNK RIVER  
 SEPTEMBER 2016  
**JASPER COUNTY**  
 IOWA DEPARTMENT OF TRANSPORTATION-HIGHWAY DIVISION



LOCATION	C.L. S. ABUT. BRG.	TOP OF SLAB ELEVATIONS																								C.L. N. ABUT. BRG.	
		LINE 1	LINE 2	LINE 3	LINE 4	LINE 5	LINE 6	LINE 7	LINE 8	LINE 9	LINE 10	LINE 11	LINE 12	LINE 13	LINE 14	LINE 15	LINE 16	LINE 17	LINE 18	LINE 19	LINE 20	LINE 21	LINE 22	LINE 23	LINE 24		LINE 25
A	866.92	866.92	866.92	866.92	866.92	866.92	866.92	866.92	866.92	866.92	866.92	866.92	866.92	866.92	866.92	866.92	866.92	866.92	866.92	866.92	866.92	866.92	866.92	866.92	866.92	866.92	866.92
B	867.05	867.05	867.05	867.05	867.05	867.05	867.05	867.05	867.05	867.05	867.05	867.05	867.05	867.05	867.05	867.05	867.05	867.05	867.05	867.05	867.05	867.05	867.05	867.05	867.05	867.05	867.05
C	867.17	867.17	867.17	867.17	867.17	867.17	867.17	867.17	867.17	867.17	867.17	867.17	867.17	867.17	867.17	867.17	867.17	867.17	867.17	867.17	867.17	867.17	867.17	867.17	867.17	867.17	867.17
C/L	867.20	867.20	867.20	867.20	867.20	867.20	867.20	867.20	867.20	867.20	867.20	867.20	867.20	867.20	867.20	867.20	867.20	867.20	867.20	867.20	867.20	867.20	867.20	867.20	867.20	867.20	867.20
D	867.17	867.17	867.17	867.17	867.17	867.17	867.17	867.17	867.17	867.17	867.17	867.17	867.17	867.17	867.17	867.17	867.17	867.17	867.17	867.17	867.17	867.17	867.17	867.17	867.17	867.17	867.17
E	867.05	867.05	867.05	867.05	867.05	867.05	867.05	867.05	867.05	867.05	867.05	867.05	867.05	867.05	867.05	867.05	867.05	867.05	867.05	867.05	867.05	867.05	867.05	867.05	867.05	867.05	867.05
F	866.92	866.92	866.92	866.92	866.92	866.92	866.92	866.92	866.92	866.92	866.92	866.92	866.92	866.92	866.92	866.92	866.92	866.92	866.92	866.92	866.92	866.92	866.92	866.92	866.92	866.92	866.92

### TOP OF SLAB ELEVATIONS

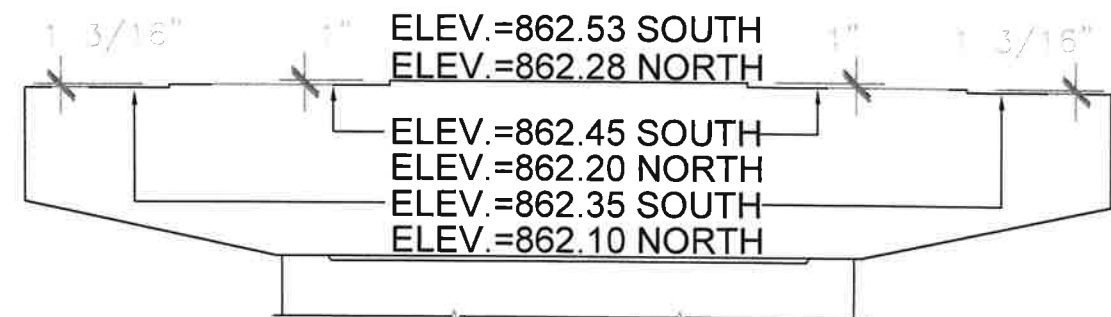


TYPICAL APPROACH SECTION



### ABUTMENT STEP DIAGRAM

(LOOKING NORTH)



### PIER STEP DIAGRAM

(LOOKING NORTH)

DESIGN FOR 30° LEFT AHEAD SKEW  
 226'-4" x 30'-0" PRETENSIONED  
 PRESTRESSED CONCRETE BEAM BRIDGE  
 INTEGRAL ABUTMENTS MONOLITHIC PIERS  
 71'-8" END SPANS 80'-0" CENTER SPAN  
**SUPERSTRUCTURE DETAILS**  
 STA. 18+52.51 HWY. T-12 OVER NORTH SKUNK RIVER  
 SEPTEMBER 2016  
 JASPER COUNTY  
 IOWA DEPARTMENT OF TRANSPORTATION-HIGHWAY DIVISION