

A d d e n d u m

Iowa Department of Transportation
Office of Contracts

Date of Letting: February 16, 2016
Date of Addendum: February 12, 2016

B.O.	Proposal ID	Proposal Work Type	County	Project Number	Addendum
160	61-0924-027	HMA Paved Shoulder - New	Madison	HISPX-092-4(27)--3L-61 MP-092-5(705)107--76-61	16feb160.a02

Make the following changes to the PROPOSAL SPECIAL PROVISIONS LIST & TEXT:

ADD 410.11 A STORM WATER POLLUTION PREVENTION PLAN HAS BEEN DEVELOPED FOR ONE OR MORE PROJECTS ON THIS CONTRACT

*** STORM WATER POLLUTION PREVENTION PLAN ***
A Storm Water Pollution Prevention Plan has been developed by the Contracting Authority for one or more projects on this contract. See the project plans (or other contract document) for specific Storm Water Pollution Prevention Plan details.

Make the following changes to the PLAN, MP-092-5(705)107--76-61:

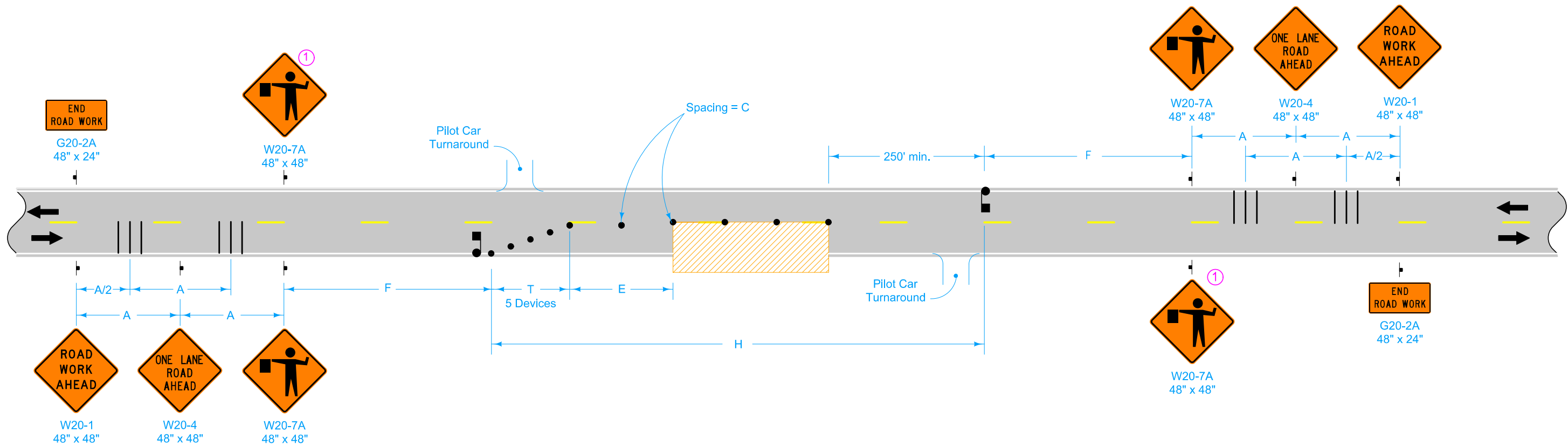
ON SHEET C.1; STANDARD ROAD PLANS, TAB.105-4:

DELETE: TC-214 04-16-13 Lane Closure with Flaggers for use with Pilot Cars

ADD : TC-214 MODIFIED 04-16-13 Lane Closure with Flaggers and Portable Rumble Strips for use with Pilot Cars

ADD DETAIL SHEET J.2;

LANE CLOSURE WITH FLAGGERS AND PORTABLE RUMBLE STRIPS FOR USE WITH PILOT CARS



LEGEND	
	Traffic Sign
	Flagger
	42" Channelizer
	Work Area
	Direction of Traffic
	Portable Rumble Strip Panel

SPEED LIMIT (mph)	ADT	A	C	E	F	H max.	T
35 or less	up to 2,500	250'	40'	0'-200'	500'	2.5 mi.	50'
	2,500 - 5,000	250'	40'	0'-200'	500'	2.0 mi.	50'
	more than 5,000	500'	40'	0'-200'	1000'	1.5 mi.	50'
40 - 45	up to 2,500	350'	80'	0'-200'	700'	2.5 mi.	100'
	2,500 - 5,000	350'	80'	0'-200'	700'	2.0 mi.	100'
	more than 5,000	700'	80'	0'-200'	1400'	1.5 mi.	100'
50 or greater	up to 2,500	500'	160'	200'-300'	1000'	2.5 mi.	100'
	2,500 - 5,000	500'	160'	200'-300'	1000'	2.0 mi.	100'
	more than 5,000	1000'	160'	200'-300'	2000'	1.5 mi.	100'

① Sign optional for ADT less than 5,000.

② In rural areas, as work activity nears the downstream limits of dimension H, the lane closure may be extended up to 1.0 mile beyond the maximum distance, H, shown in the table. After the traffic control devices have been placed to extend the closure and after work activity has progressed, the advanced signing and devices at the beginning of the traffic control zone should be moved downstream so that the H distance is once again within the limits shown in the table. This one-mile extension will not be allowed during any peak traffic hours listed in the contract documents.

Possible Contract Items:

- Flagger
- Pilot Car
- Traffic Control

MODIFIED STANDARD ROAD PLAN	REVISION	
	5	04-16-13
TC-214		SHEET 1 of 1

MODIFICATIONS: Added Portable Rumble Strip Panel.

LANE CLOSURE
WITH FLAGGERS AND RUMBLE STRIPS
FOR USE WITH PILOT CAR