

IOWA STATE LIBRARY

Law Department

State of Iowa

1926

THIRTEENTH REPORT

OF THE

Iowa Library Commission

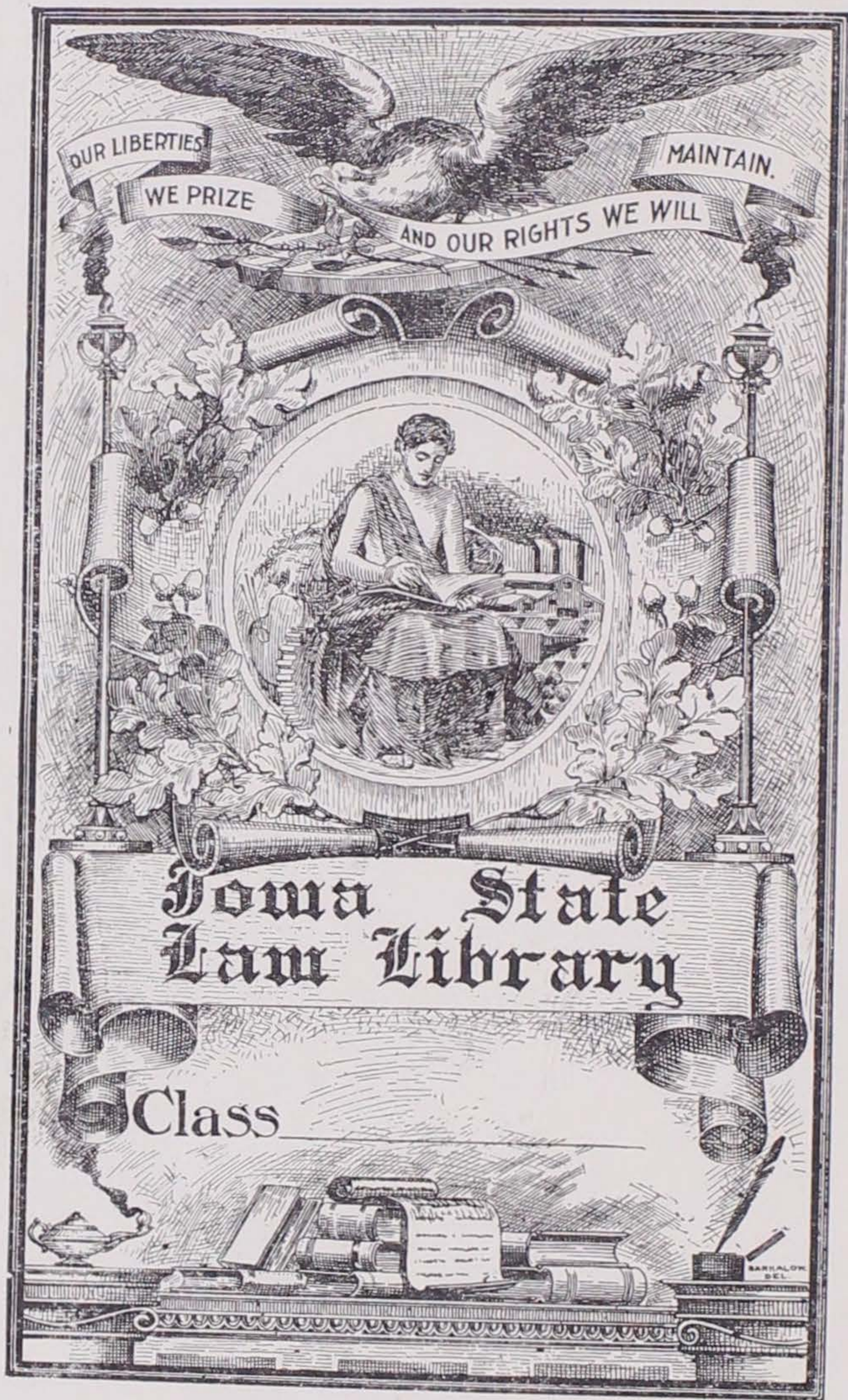
MADE TO THE
GOVERNOR OF IOWA

FOR THE

BIENNIAL PERIOD JULY 1, 1924 TO
JUNE 30, 1926

JULIA A. ROBINSON
Secretary

Published by
THE STATE OF IOWA
Des Moines



State of Iowa
1926

THIRTEENTH REPORT

OF THE

Iowa Library Commission

MADE TO THE
GOVERNOR OF IOWA

FOR THE

BIENNIAL PERIOD JULY 1, 1924 TO
JUNE 30, 1926

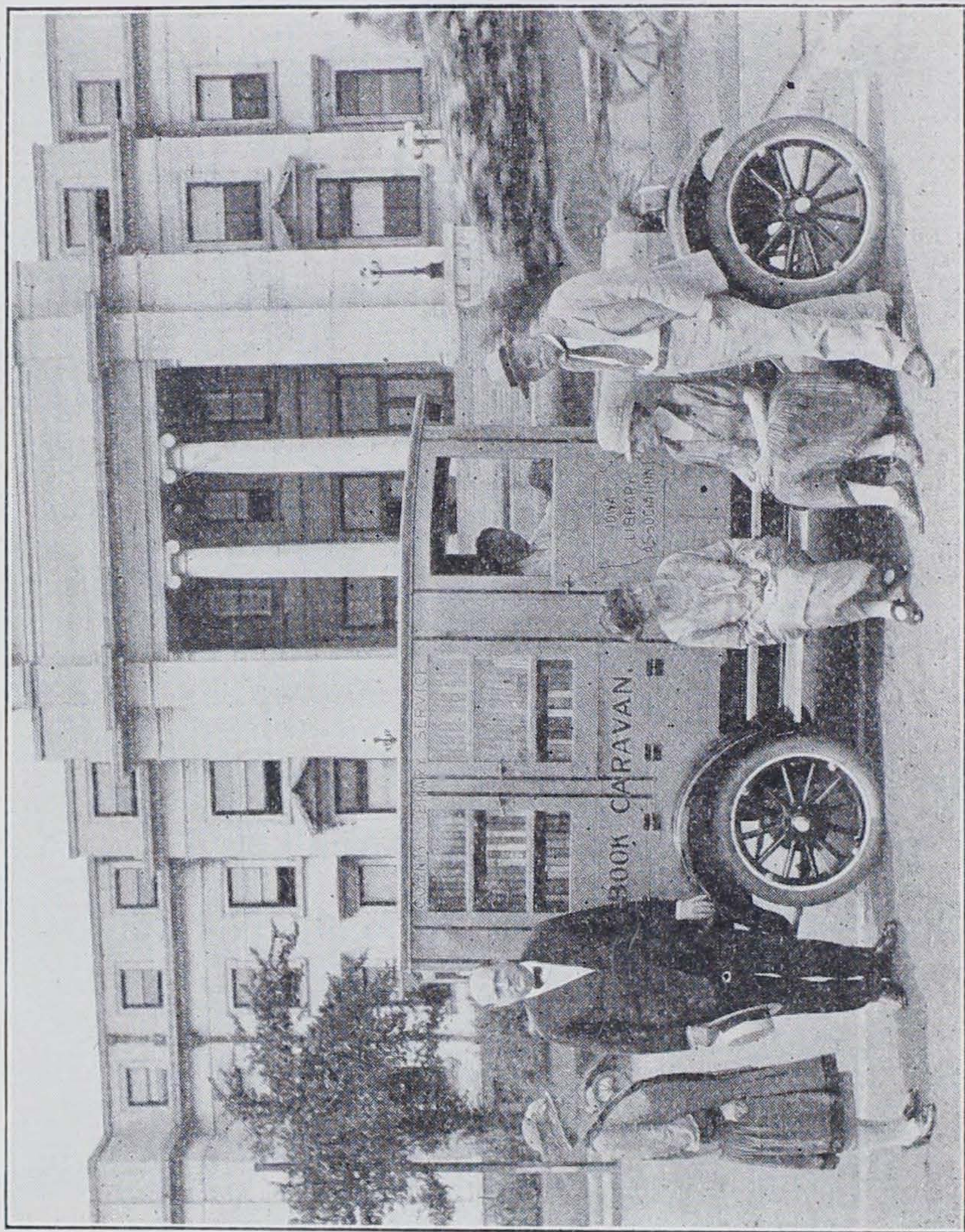
JULIA A. ROBINSON
Secretary

Published by
THE STATE OF IOWA
Des Moines

8. 412

IOWA STATE
LAW LIBRARY

IOWA LIBRARY
IOWA STATE



Iowa Library Association Book Car

LETTER OF TRANSMITTAL

TO HONORABLE JOHN HAMMILL, *Governor of Iowa*:

In compliance with Section 4539, Code of 1924, I herewith transmit the thirteenth report of the Iowa Library Commission for the biennial period, July 1, 1924, to June 30, 1926.

JULIA A. ROBINSON,
Secretary, Iowa Library Commission.

Des Moines, Iowa, November 1, 1926.

IOWA LIBRARY COMMISSION

MEMBERS EX-OFFICIIS

JOHNSON BRIGHAM, State Librarian, Chairman.
WALTER A. JESSUP, *President State University.*
MAY E. FRANCIS, *State Superintendent Public Instruction.*

MEMBERS APPOINTED BY THE GOVERNOR

MRS. WILLIAM D. SOUTHWICK, Boone.
W. R. ORCHARD, Council Bluffs.
MARTHA MCCLURE, Mount Pleasant.
A. M. DEYOE, Des Moines.

JULIA A. ROBINSON, *Secretary and Director of Library Extension.*
HEADQUARTERS: State Historical Building.

REPORT OF IOWA LIBRARY COMMISSION

MEMBERSHIP

Two changes in the membership of the Library Commission have taken place during the biennium.

Addison Parker, who was appointed to fill Mrs. Towner's unexpired term and reappointed in 1925, resigned in January, 1926. A. M. Deyoe was appointed to fill the vacancy. Mr. Deyoe as Superintendent of Public Instruction had been a member of the Library Commission ex-officio and is acquainted with the work and its needs.

Mrs. H. J. Howe died in March, 1926, and was succeeded by Martha McClure. Mrs. Howe was appointed to membership on the Library Commission in 1904 on resignation of Jessie Waite Davidson and successively reappointed as her terms expired. Her interest in library work was keen and intelligent, and the work of the Library Commission, which was especially dear to her, profited much from her connection with it. Her going is a loss to the Library Commission and to library interests in the state.

ACTIVITIES

Two activities are given by law to the Iowa Library Commission, (1) Extension and supervision and (2) the Traveling Library.

EXTENSION AND SUPERVISION

This work which is under the direct supervision of the Secretary, being the oversight of all the libraries of the state, covers help in beginnings, organization of libraries for efficient service including book selection and buying, advice in library building and equipment, in selection and employment of librarians and many details of library management. The subjects following all receive more or less of the Secretary's attention as part of the work of supervision.

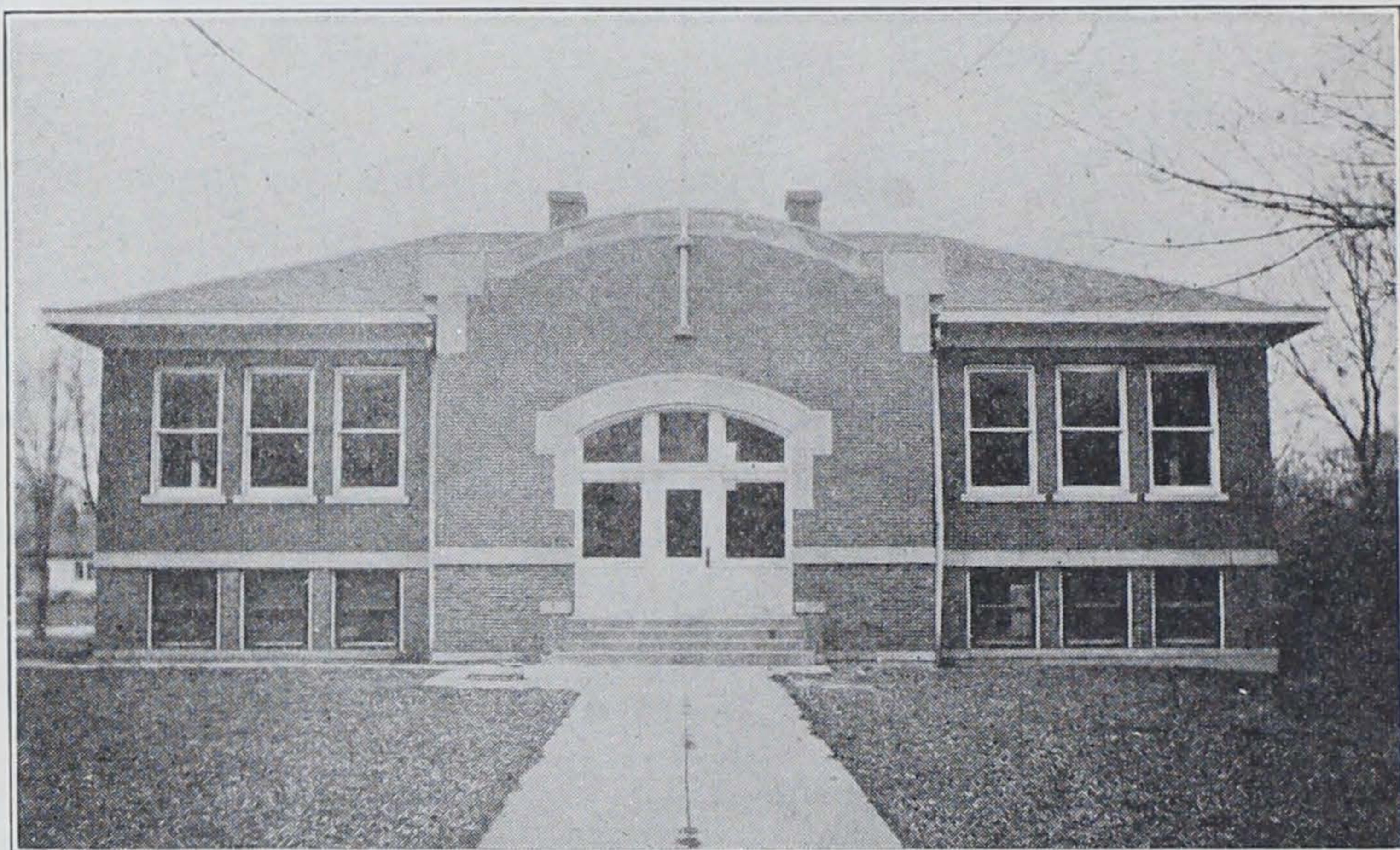
This help is given by correspondence and visits by the Secretary for inspection and conference with librarians and library boards. That they are helpful is the constant testimony of both.

Owing to insufficient help during the past two years in the

office she has been able to make far fewer visits than she should have done.

Library Beginnings. The removal of the election clause in the revision of the code, as a condition for securing tax support has made it possible for small towns to secure a small levy or appropriation and this has been done in towns too small to maintain a library even at the maximum and the levy is generally a very small one. This means a poorly supported and inefficient library without money to buy books or employ a competent librarian.

During the past two years nine libraries have been added to the number receiving tax support—most of them coming under



Woods Memorial Library Building at Sutherland

the class described above. In most cases this was done without the advice or without the knowledge of the Secretary of the Library Commission. The towns recently receiving tax support are Akron with a population of 1,224; Alton, 1,017; Grand Junction, 1,008; Greene, 1,299; Lake Mills, 1,588; Lake View, 886; Morning Sun, 847; Northwood, 1,499; Orange City, 1,620, and Sutherland, 823.

Two of these, Morning Sun in Louisa County and Northwood in Worth County, are in counties previously without any tax supported library. Three counties, Clayton, Union and Van Buren, are still without tax supported libraries.

Libraries in small places could be much more efficiently, satisfactorily and economically maintained as branches of a county

library and even now a number of towns are wisely becoming branches of larger libraries instead of seeking an independent tax. As examples may be mentioned Rockford as a branch of Charles City, Gilman of Marshalltown and Bettendorf of Davenport.

Organizing Help. In addition to the advisory aid in administration which is given to librarians and library boards by the Secretary there is much technical help needed in the installation of approved modern library methods and the making of a catalog, etc. This requires more time than the Secretary can give on her visits which must necessarily be brief. Technical help is needed by libraries in their beginning, also where untrained help has been employed and the organization has lapsed.

Few school libraries of the state are well arranged, classified or cataloged and few have trained librarians competent to do this work. Therefore many requests for help in organization of school libraries come to the Library Commission office. This the Library Commission is glad to give when there is sufficient help in the office to do it.

Association Libraries. A library governed by an association and supported by membership dues, entertainments, donations, etc., has been the usual method for library beginnings and is still used, twenty-one associations having been organized during the past two years at the following places: Arlington, Bellevue, Donnellson, George, Gilmore City, Guthrie Center, Harris, Manly, Murray, Oakville, Oxford Junction, Prairie City, Preston, St. Charles, Schaller, Sidney, Sioux Center, Stratford, Titonka, Volga and Walnut. Eight association libraries already enumerated have become tax supported. A number have ceased to function.

In some places the use of the library is restricted to those holding memberships only, in others the library is made free to all. A room and furniture is often donated and the service is voluntary. Loans from the Traveling Library supplement the book collections from purchase and donations.

COUNTY LIBRARIES

Believing that through county libraries must come the solution of a statewide supply of books the Secretary is now giving much attention to the promotion of county library interest through the various channels through which it may be fostered.

This interest and library interest in general have received an impetus from the travels of the Iowa Book Car during the summer of 1926.



New Capitol Hill Branch Building, Des Moines Public Library

By reason of the Regional meeting at Sioux City in 1925 and the generosity of the State University of Iowa in connection with the Iowa City meeting in 1926 the Iowa Library Association found itself with a surplus in the treasury. At Sioux City \$300 of this was voted for the promotion of county library work and an addition was made later by action of the districts at the spring meetings in 1926.

This was invested in a Book Car by the County Library Committee consisting of Lydia Margaret Barrette of Mason City, Callie Wieder of Waterloo and Mary E. McCoy of Indianola.

The expense for gasoline and repairs was met by the libraries using the car for visits to county and other fairs and for travel along the country roads where stops were made at the farm homes to explain the value of a county library and the use of a book car.

Visits varying from one day to a week will be made before the end of October in Warren, Story, Cerro Gordo, Monona, Pottawattamie, Black Hawk, Howard, Scott, Webster, Hardin, Marshall, Worth, Polk and Franklin counties.

Follow up methods will carry on the work thus begun.

TOWNSHIP EXTENSION

The extension of library privileges to townships, school corporations and small towns is given by the following libraries on the payment of a small levy or appropriation within the limit of one mill allowed by the law. The number of small towns receiving such service has materially increased during the past two years but this is almost wholly missionary or publicity work as the amount received scarcely covers the cost of the service.

But it is a much better method of supplying the book needs of small towns than an independent library which is often poorly supported and inefficiently managed.

It is also a step toward county library service and the towns now contracting for rural extension service will come into a county library system without further contracts.

In the case of townships, with the exception of Clarinda and Onawa, no stations are maintained but in all towns having extension there are branches from the main library.

	Township	Towns	Mill Levy	Amount
Alden	1	..	.4	\$ 345
Cedar Rapids	1	...	222
Charles City	1	...	175
Clarinda	3	1	.25	498
Cresco	3	..	.5	786
Davenport	1	1	...	800
Dunlap	1	..	1	566
Eldon	1	400
Fort Dodge	1	250
Garner	1	..	.2	38
Grinnell	1	..	.25	130
Grundy Center	1	117
Logan	1	197
Marshalltown	1	.5
Montezuma	1	300
Onawa	1,190
Sac City	1	..	1	567
Sibley	1	629
Tipton	1	..	.5	322
Traer	2	392
Winterset	1	..	1
Woodbine	1	..	1	510

LIBRARY EFFICIENCY

As a library is ranked not by the number of books on its shelves but by the service which it renders to its community in the supply of books for reading and in the help given through its reference work to schools, women's clubs and all who wish information of any kind, a basis for computing this efficiency has been sought.

The reference work is very difficult to count as the number of questions answered gives no satisfactory measure of the work done.

Neither is the record of the number of readers holding library cards conclusive as it is a difficult matter to keep this record up to date and free from dead timber.

The number of books loaned has been accepted as the most satisfactory basis of comparison between libraries and between different periods for the same library, especially if computed per capita on the town's population. As the per capita increases as the population decreases a much smaller per capita for a large library may show equally or more efficient work.

In previous reports a table arranged by population has been included showing the per capita circulation from the various libraries. The table is omitted from this report as the change in date of report has caused a confusion in the periods covered making a fair comparison between libraries impossible.

INCOME

The amount available for the support of a library naturally governs the efficiency of a library as on it depends the book supply and the competency of a librarian which may be employed.

The American Library Association has decided, after much careful investigation, that \$1.00 per capita is only a reasonable income for any library and experience has shown that amount to be far below an adequate figure for the smaller libraries. A per capita table of incomes is omitted for the same reason which excludes a table of per capita circulation.

The amount of tax levy appears in the statistics printed at the end of this report. An increase in the number of libraries receiving the maximum of five mills or approximately that levy is noticeable and satisfactory as it indicates more nearly adequate maintenance and a growing recognition by the councils of the value of the libraries.

Inasmuch as the levy in some cases is made on one-half or full valuation it raises the rate higher than appears in such cases.

LIBRARY BUILDINGS

A new library building at the State College, Ames, was dedicated on January 21, 1926. The building is planned to meet modern library needs and adds greatly to the efficiency of the college library.

In Des Moines a building specially planned for library use has been built for the Capitol Hill Branch of the public library.

The town of Dumont has received a gift of a \$5,000 library building from Mr. George Brown, a public spirited citizen, a condition being that the town should raise \$1,000 for books, which was done.

An addition to the library building at Mt. Pleasant was made possible by a bond issue of \$8,000 and at Sioux City a bond issue of \$80,000 was voted for the erection of much needed branch buildings.

At St. Ansgar the bequest of Mrs. Karen Nissen has made possible a \$5,000 library building which is just completed.

At Sutherland the bequest of Mrs. Roma Woods for a library building was recently made available and a remodeled school building making an attractive library building stands as a memorial to Mr. and Mrs. Woods.

SCHOOL LIBRARIES

The number of school libraries in the state is not known, no office being charged with collection of such statistics.

Approximately adequate libraries exist in the high schools at least of the larger towns, a few administered by trained librarians. In other schools they are in charge of a teacher-librarian without either library training or experience, hence their usefulness is reduced. In consolidated and rural schools the situation is even less satisfactory.

Many high school and college libraries are not organized and constant requests come to the Library Commission for help in organizing and cataloging to which the Library Commission is glad to respond when there is an assistant to do the work. But a continued vacancy in that position due to low salary has prevented the help being given.

The addition of a School Library Supervisor to the Library Commission staff would add greatly to the efficiency of the school libraries of the state.

LIBRARY MEETINGS

Iowa Library Association. In 1925 the Iowa Library Association joined with Minnesota, Missouri, Nebraska, and North and South Dakota in holding a Regional Meeting at Sioux City. The attendance was 396 of which 202 were registered from Iowa. A most excellent program was given by librarians of the states participat-

ing, representatives of the American Library Association and other speakers.

In 1926 the annual meeting was held in Iowa City in July to avoid conflict with the Fiftieth Anniversary of the A. L. A. to be held in October. The attendance of 253 was the largest in the history of the association. The cooperation of the University in speakers and arrangements for the pleasure of the librarians rendered the meeting a helpful and enjoyable one.

District Meetings. Eight district meetings of the Iowa Library



Interior New Capitol Hill Branch, Des Moines Public Library

Association in cooperation with the Library Commission were held in 1925 and 1926 each.

These meetings were attended by the Secretary of the Library Commission and the President or Vice President of the Iowa Library Association. This gives the Secretary the opportunity to come in close touch with librarians and trustees in discussion of their problems.

To librarians it furnishes informal conferences with each other and the discussion of questions, often crowded out at the larger meetings, takes the place of formal papers. Book talks always form a feature of the program and helpful buying lists are distributed.

American Library Association. Meetings of the American Library Association were held at Saratoga Springs in 1924 and at Seattle in 1925. The 1926 meeting will celebrate the Fiftieth Anniversary of the American Library Association and will be held in October, the month of its organization. The Saratoga Springs meeting was attended by Mr. Brigham and Miss Robinson, the Seattle meeting by Mr. Brigham only.

A Librarian's Conference was held by the Extension Department of the State University in 1925 in connection with the Summer School but was omitted in 1926, the Iowa Library Association meeting taking the place of the usual conference.

State Teachers Association. Meetings of the Library Section of the State Teachers Association are held regularly in connection with the meeting of this association. While the attendance is not large the interest is good and the program helpful. In this meeting the Secretary of the Library Commission always cooperates with the school librarians.

IOWA LIBRARY SUMMER SCHOOL

Courses in library economy are conducted each year as a part of the summer session of the State University of Iowa, credits being given for courses in cataloging, classification, book selection, reference, children's work, library administration and minor subjects.

These courses are not a substitute for the training which may be secured at the regular library schools, but by furnishing principles and opportunity for practice under trained librarians, give the instruction which enables librarians to better administer the smaller libraries unable to afford fully trained librarians, and to fill subordinate positions in the larger ones.

The course in library administration is given by the Secretary of the Library Commission and the Library Commission further cooperates in the loan of books from the Traveling Library for practice work.

SUPERVISING LIBRARIAN OF STATE INSTITUTIONS

This position became vacant in 1925 by the resignation of Julia Stockett. No successor has been appointed and the libraries in the state institutions are suffering in book selection and supplies and efficiency.

STATE FAIR EXHIBIT

In 1925 the Library Commission was deprived of the basement room which had been used for exhibition purposes for ten years and a small space in the corridor of the second floor of the Women and Children's Building assigned. As attractive an exhibit as possible was made but the location is much less valuable for publicity, the space is too small for an adequate exhibit and does not furnish the reading facilities so much appreciated by the children of the campers.

CHILDREN'S BOOK WEEK

The observance of Children's Book Week in the interest of better books in the home and therefore better reading for children is now an annual event in many towns where it is sponsored by libraries, women's clubs, parent-teachers associations, schools and others.

Suggestions and outlines for programs, posters, book lists, book plays and book exhibits are loaned by the Library Commission to assist in this observance.

PUBLICATIONS

Iowa Library Quarterly. A change has been made in the mailing of the *Quarterly* and at present it is sent only to the librarian, the president and secretary of each public library and to such other trustees as request it. Each association and college library receives a copy and additional copies are mailed where requested.

Booklists. Lists for the first and second, the third, the fourth, and the fifth and sixth grades have been revised and reissued. A revision of the Junior and Senior High School lists was planned but not carried out, but a supply of the 1923 lists is still available. These lists are free to schools as well as libraries.

Statistics and Blanks. Forms for collection of statistics from the libraries of the state are furnished free from the commission office, also blanks for keeping daily and monthly statistics from which the annual report may be compiled. Blanks for use of the libraries in making their annual budget and in certifying to the city council their tax levy for the coming year are also furnished.

Leaflets and Forms. Leaflets explanatory of the work of the Library Commission and of the Traveling Library and other blanks and forms necessary for keeping records are prepared and printed as needed. No new leaflets have been issued but revisions of several already in existence have been made.

LIBRARY HELPS

To assist in the better selection of books and greater economy in book buying the *A. L. A. Booklist* is furnished free to the smaller libraries unable to afford the subscription price.

Library and other helpful lists and publications of the American Library Association and the larger libraries are purchased in quantities by the Library Commission and furnished to the libraries of the state.

Collections of the various editions of standard books, and of beautiful copies are maintained by the Library Commission for loaning to libraries, women's clubs, parent-teachers associations, schools and other organizations for exhibit purposes to encourage reading and purchase of better books than the stores often afford.

TRAVELING LIBRARY

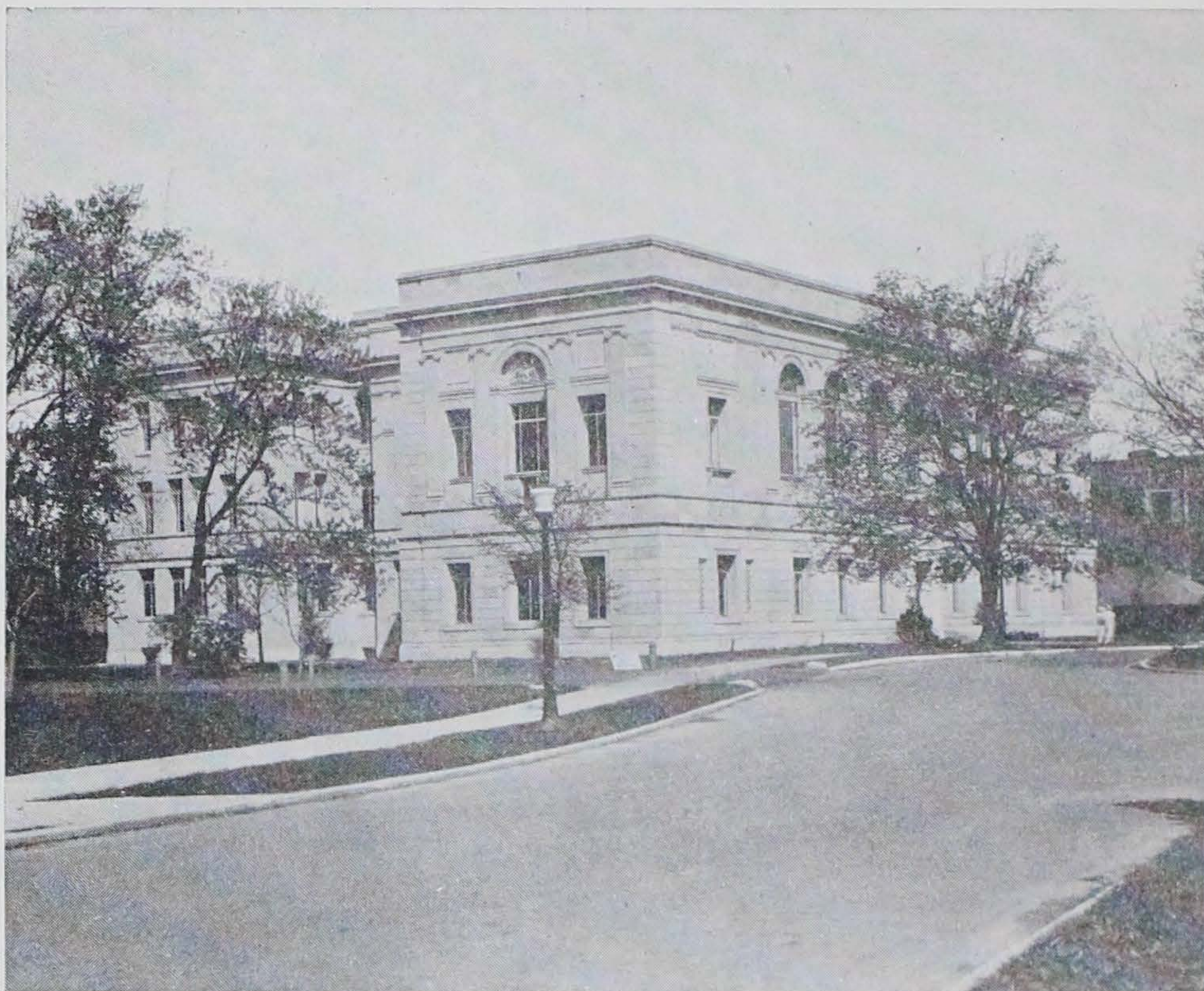
The second activity of the Library Commission is the Traveling Library from which books are loaned to the people of the state without library facilities or who are unable to secure from their local libraries the books they need or desire.

The Traveling Library at the present time has approximately 70,000 books, 15,000 of which are in fixed groups of fifty volumes each for general reading by adults and children. The balance are in an open shelf collection from which selections are made to meet specific requests. These requests come from clubs and other organizations, churches, schools and individual borrowers.

The requests from the women's clubs are of two kinds, (1) for the preparation of their programs to be described later and (2) for reloaning as community libraries. Many of the tax supported libraries in the state made their beginnings in this way and a number of libraries classed as association libraries are still sponsored by clubs.

As elsewhere stated the school libraries of the state are far from adequate both for school use and for recreational reading. As a consequence the demands upon the Traveling Library from schools are very heavy, so heavy and the supply in the Traveling Library so inadequate that the full list requested is seldom filled, and these requests come from country schools and towns without library facilities.

The number of individual borrowers is constantly on the increase. Some of the requests from individuals are for reading for cultural and recreational purposes, some for carrying on ex-



New Library Building at Iowa State College

tension and other courses of study. In towns with libraries, only such books are loaned as cannot be procured from the public library and the loan is made through the public library to avoid duplication.

To individuals and for books much in demand the period of loan is four weeks only, where books are to be used by groups in schools or communities they are loaned for three months. There is little loss either of books or postage.

Books for the Blind. The Traveling Library collection of books for the blind now numbers 2,771 divided between New York Point and Revised Braille. The addition of books for the blind during the past two years number 765 and 1,890 were loaned, a gain of more than fifty percent. More could be done if the assistant had more time to give to this collection.

Picture Collections. A beautiful picture collection consisting of reproductions of the work of children in Prof. Cizek's classes in the Vienna School of Arts and Crafts has been added to the Traveling Library picture collections.

A number of new subjects have also been added to the collection of stereoscopic views. Loans of pictures and stereoscopic views could be much increased with sufficient help to give it more specific attention.

REFERENCE WORK

Most of the requests received by the Traveling Library from women's clubs are for material for preparing papers. These requests are generally by subject thus, requiring a large amount of research work to find in a book, chapter of a book, magazine article, pamphlet or clipping the satisfactory material to fill the need.

This work is constantly increasing and in the busy season of the winter is beyond the ability of one person to keep it up to date.

Study Club Outlines. Not only do clubs depend on the Traveling Library for material for carrying out their programs but for outlines and syllabi to assist in arranging them.

For this purpose the Traveling Library maintains a collection of outlines on the various subjects called for by the clubs and new ones are added as they can be procured.

Debate Material. A list of the references to be used each year by the High School Debate League is prepared by the Reference Librarian and the material duplicated to meet as nearly as possible the heavy demand. Many requests also come to the reference department for help in debates on other subjects.

GROWTH AND PUBLICITY

The Library Commission is sometimes criticized because there are schools, clubs and people in the state who do not know of the opportunity they may have to borrow books from the Traveling Library.

The only reply to be made to this is that with the present appropriation and present help the limit of supply has been practically reached and only such growth in the work as comes without effort is possible. Therefore no attempt is made to give publicity to the Commission work or to secure borrowers for the Traveling Library.

OFFICE STAFF

The work of the Library Commission in supervision, extension and organizing, and in the work of the Traveling Library in the selection, cataloging and loaning of books, reference work, keeping records, shipping and receiving books and shelving them on their

return, requires both people with technical training in library methods and clerks and stenographers.

The staff as provided by the Forty-first General Assembly consists of a *Secretary* with library school training, an experience of thirteen years with the Iowa Library Commission as well as with two commissions preceding her coming to the Iowa work.

She has supervision of the entire work of the Library Commission in all its activities but especially the supervision of the libraries of the state, help in beginnings and organization, cooperation with the Iowa Library Association in its meetings and with the State University in the work of the Summer School, representing library interests with other organizations, and many minor duties.

To the *Librarian of the Traveling Library* belongs the work of filling all requests for books except those requiring research work.

This includes the selection from the shelves of the titles to meet the desires or needs of each borrower as expressed in the letters coming to the office, as well as the supervision of the shipping of the books. An acquaintance with books and with library technique is necessary, therefore library training and experience are essential qualifications for this position.

Gertrude Davis after a year's service with the Library Commission will leave in August and the vacancy will be filled by Grace Murphy, a graduate of the St. Louis Library School and with experience in the Davenport Public Library.

Reference Librarian. As outlined in the reference work, it is necessary that this assistant shall have an acquaintance with books and of catalogs and indexes as well as magazines and pamphlets and know how to make available all possible material in supplying the needs of the club women.

Clara L. Abernethy who has held the position of Reference Librarian for five years is prepared for it by college and library school training, knows the Traveling Library books and is painstaking and conscientious and can command a larger salary elsewhere and the Library Commission is in constant danger of losing her unless the salary for that position is more nearly adequate for the work required.

The *Cataloger* must also be a library school graduate as her work includes the cataloging of the additions to the Traveling Library and installing catalogs and modern methods in public and school libraries of the state.

This position has been vacant for more than a year because the salary allowed is not sufficient to attract a librarian competent to

do the work. Again and again when it seemed that a person had been secured a higher salary elsewhere proved too tempting.

Three clerks are allowed at the present time, a *Record Clerk* whose duty is to keep a record of the books loaned from the Traveling Library and to check them on their return, also to send notices for overdues and books not returned. Grace Ryan has held this position for over four years. Previous to that time she served as General Assistant for about two years.

A *General Assistant* does the routine work in connection with the Traveling Library such as checking bills, and books purchased, entering them on the accession record, making cards and pockets, mending, preparing books for binding and for use on their return, checking the magazines as they are received and attending to a multitude of other details. This assistant also has charge of the circulation of the books for the blind which has increased more than fifty percent during the past two years. Mrs. Helen Keogh Shepard who has done this work faithfully and competently for four years took the library course at Iowa City in 1926 thus making her more efficient in the Commission work.

The *Janitor* is classed as a clerk and in addition to the usual janitor work assists in shelving books and in shipping.

Two high school boys work half time each as *Shipping Clerks* for sending out books.

Two *Stenographers* are also employed, one for the correspondence of the Secretary, the other for the Traveling Library. The Secretary's Stenographer also prepares the bills and does the bookkeeping for the Library Commission. Elsie Riley, the Secretary's Stenographer has been with the Library Commission for four years. Two Traveling Library Stenographers have married during the past two years, Lurene Stevenson and Hattie Blank. Lurene Stevenson as Mrs. Carl Jaeger has returned to the Traveling Library work.

TRAVELING LIBRARY SUMMARY

June 30, 1924—July 1, 1926

Books added to the Traveling Library.....	7,415	
Total number of books in Traveling Library June 30, 1926.....	69,097	
Books loaned from Traveling Library.....	131,016	
Requests filled by Traveling Library.....	10,041	
Books for blind added to Traveling Library		
Braille	219	
New York Point.....	40	259
Total number books for blind in Traveling Library		
Braille	360	
New York Point.....	401	761

Books for blind loaned from Traveling Library.....	1,890
Traveling Library Stations	
Additions	765
Total	2,771
Picture collections, posters and stereoscopic views loaned.....	243
Number volumes loaned to schools and colleges.....	58,350
Number volumes loaned to study clubs and other organizations .	35,388
Number volumes loaned to individuals.....	15,423

DETAILED STATEMENT

The total annual appropriation for the work of the Library Commission is \$9,250. This covers all the activities of the Library Commission, Traveling Library, extension, traveling expenses, etc. Inasmuch as the law provides that all accounts and expenditures must be audited by the State Executive Council, the detailed statement of expenditures is given in the printed records of the council.

LEGISLATION

The only general library legislation enacted by the Forty-first General Assembly was the bill making the end of the library year and the time of the annual report from public libraries coincide with that of other city departments on March 31st.

A change in the county library law by the addition of the words "having public libraries" thus exempting only towns with public libraries from the application of the county library law is probably the only general library legislation which will be sought from the Forty-second General Assembly.

LIBRARY COMMISSION NEEDS

The needs of the Library Commission which can be met by the legislature are first, *financial*. This will be partially met by restoration of the appropriation to \$12,000 from which it was cut by the Forty-first General Assembly.

This would allow the purchase of more books and give a larger travel fund to be used by the Secretary for visits to libraries for conferences with library boards so desirable in promoting the efficiency of the libraries; also in visits of the Organizer to give technical assistance in the installation of modern methods requiring more time than the Secretary is able to give in her visits.

The second need is *more office help* and this is as great as the financial need as neither Secretary nor Organizer can now spend the needed time in the field because of office work and because it is useless to buy books unless they can be sent where needed and

when needed and the present force is inadequate for this in the busy season.

A *General Library Assistant* competent to give assistance in filling orders and dividing with an apprentice the work of the present untrained General Assistant would give the Organizer more time for work in the libraries of the state and make for more prompt filling of Traveling Library orders.

A *full time Shipping Clerk* instead of two half-time high school boys would serve to expedite the work of getting the books out which in the busy season is often delayed.

These changes are requested and will add but \$920 to the present salary pay roll.

The requests for increased salaries are warranted by the responsibility of the positions and the salaries competent librarians needed for these positions can command elsewhere. For this reason there has constantly been difficulty in filling the positions in the past greatly hampering the work with which the Library Commission is charged by law.

Some of the clerical help has served the office for a number of years and are deserving of the slight increase requested.

The \$2,250 requested restored to the maintenance, the \$920 for increased help noted above and the \$1,180 for increased salaries gives a total increase of \$4,350 only, a small amount for the really great educational work which the Library Commission is doing.

GIFTS TO IOWA LIBRARIES

Cedar Rapids. Coe College. \$5,000 a year for five years from The Carnegie Corporation for library development.

Dumont. \$5,000 from George H. Brown for a library building.

Hawarden. \$1,500 from trustees of the disbanded Order of Good Templars.

Mt. Pleasant. Public Library. Books from the private Library of W. D. Worthington valued at more than \$1,000 from Mrs. Worthington.

Mt. Pleasant. Iowa Wesleyan College. \$100,000 from the P. E. O. Sisterhood for the erection of a memorial library building.

Oxford Junction. Bequest for a library made twenty years ago just available by the sale of farm property.

Peterson. Proceeds from sale of a 200 acre farm as a gift for a library building by the will of Mrs. Lena French.

St. Ansgar. \$5,000 for a building and \$1,000 for books by the will of Mrs. Karen Nissen, a former resident.

FREE PUBLIC LIBRARIES ARRANGED BY COUNTIES

Adair	Greenfield
Adams	Corning
Allamakee	Waukon
Appanoose	Centerville
Audubon	Audubon
Benton	Vinton
Black Hawk	Cedar Falls, Waterloo
Boone	Boone
Bremer	Waverly
Buchanan	Independence
Buena Vista	Alta, Storm Lake
Butler	Greene, Parkersburg
Calhoun	Lake City, Rockwell City
Carroll	Carroll, Coon Rapids
Cass	Atlantic
Cedar	Tipton, West Branch
Cerro Gordo	Clear Lake, Mason City
Cherokee	Cherokee
Chicasaw	Nashua, New Hampton
Clarke	Osceola
Clay	Spencer
Clayton	None
Clinton	Clinton, De Witt
Crawford	Denison
Dallas	Adel, Perry
Davis	Bloomfield
Decatur	Leon
Delaware	Manchester
Des Moines	Burlington, Mediapolis
Dickinson	Arnolds Park, Spirit Lake
Dubuque	Dubuque
Emmet	Estherville
Fayette	Hawkeye, Oelwein
Floyd	Charles City
Franklin	Hampton
Fremont	Hamburg
Greene	Grand Junction, Jefferson, Paton
Grundy	Grundy Center, Reinbeck
Guthrie	Stuart
Hamilton	Webster City
Hancock	Britt, Garner
Hardin	Alden, Eldora, Iowa Falls
Harrison	Dunlap, Logan, Missouri Valley, Woodbine
Henry	Mount Pleasant
Howard	Cresco
Humboldt	Humboldt
Ida	Arthur, Galva, Ida Grove
Iowa	Marengo
Jackson	Maquoketa
Jasper	Colfax, Newton
Jefferson	Fairfield
Johnson	Iowa City
Jones	Anamosa, Monticello
Keokuk	Sigourney
Kossuth	Algona
Lee	Fort Madison, Keokuk
Linn	Cedar Rapids, Central City, Marion
Louisa	Morning Sun
Lucas	Chariton
Lyon	Rock Rapids

Madison	Winterset
Mahaska	Oskaloosa
Marion	Knoxville, Pella
Marshall	Marshalltown
Mills	Glenwood, Malvern
Mitchell	Osage
Monona	Onawa, Whiting
Monroe	Albia
Montgomery	Red Oak, Villisca
Muscatine	Muscatine, West Liberty
O'Brien	Paullina, Primghar, Sanborn, Sheldon, Sutherland
Osceola	Sibley
Page	Clarinda, Shenandoah
Palo Alto	Emmetsburg
Plymouth	Akron, LeMars
Pocahontas	Laurens
Polk	Des Moines
Pottawattamie	Council Bluffs
Poweshiek	Grinnell, Montezuma
Ringgold	Mount Ayr
Sac	Lake View, Odebolt, Sac City
Scott	Davenport
Shelby	Harlan
Sioux	Alton, Hawarden, Orange City
Story	Ames, Maxwell, Nevada
Tama	Tama, Toledo, Traer
Taylor	Bedford
Union	None
Van Buren	None
Wapello	Eddyville, Eldon, Ottumwa
Warren	Indianola
Washington	Washington, Wellman
Wayne	Corydon, Humeston
Webster	Callender, Fort Dodge
Winnebago	Forest City, Lake Mills
Winneshiek	Decorah
Woodbury	Sioux City
Worth	Northwood
Wright	Belmond, Clarion, Eagle Grove

GENERAL SUMMARY

New tax supported libraries.....	9
Total tax supported libraries.....	153
Endowed libraries	2
New association libraries.....	19
Total association libraries.....	91
New library buildings.....	4
Libraries not reporting	
Tax supported	5
Association	15
Total	20
Total number volumes in tax supported libraries.....	1,764,356
Total circulation from tax supported libraries.....	7,101,334
Population of state having access to libraries	
Tax supported	912,054
Association	93,281
Total	1,005,335
Population of state.....	2,419,927

GENERAL STATISTICS FOR IOWA LIBRARIES—FREE PUBLIC LIBRARIES
April 1, 1925—March 31, 1926

Number	Place	Librarian	Building			Books			Borrowers			
			Donor	Year erected	Cost	Total number volumes	Volumes added in 1925	Volumes loaned in 1925	City	Country	Hours open	Branches or stations
1	Adel	Pearl De Reus				1,951	176	6,721			15	
*2	Akron	A. L. MacMillan										
3	Albia	Mrs. L. M. Duncan	Carnegie	1908	\$ 10,000	7,338	695	31,055	3,098	77	36	
4	Alden	Mrs. Kittie Catlin	Carnegie	1914	9,000	3,403	198	5,348	407	178	20	
5	Algona	Mrs. Lura Sanders	Carnegie	1904	10,000	9,246	239	21,834	1,696	6	33	
6	Alta	Grace Clemons	City Hall			2,859	359	9,057	515	45	16	
*7	Alton	Elizabeth V. Pitts										
8	Ames	Grace Hill	Carnegie	1904	16,000	14,188	118	47,367	3,080	55	75	1
9	Anamosa	Maye Birk	D. A. R.	1903	12,000	7,227	227	22,358	2,000	15	30	
†10	Arnolds Park	(Mrs. Morton Gardner)										
11	Arthur	(Faye McGonigle, Sec'y)				269	35		97		1	
12	Atlantic	Gertrude Barnard	Carnegie	1903	12,500	8,252		2,391	1,120	55	42	
13	Audubon	Mrs. Gertrude Nelson	Carnegie	1912	10,000	7,262	302	24,827			33	
14	Bedford	Mrs. C. F. Beall	Carnegie	1916	10,000	4,353	446	2,608	1,411	19	30	
15	Belmond	Mrs. J. E. Wallace	H. Crist	1917	13,000	3,009	163	12,008			31	
16	Bloomfield	Mrs. Mary H. Hinkle	Carnegie	1913	10,000	5,182	299	11,599	1,004	12	42	
17	Boone	Bessie Moffatt	Ericson	1901	30,000	21,937	1,003	49,487	5,527	47	68	
18	Britt	Ada Chaplin	Carnegie	1918	8,000	3,539	209	16,363	691	91	32	
19	Burlington	Mrs. C. P. Millard	P. M. Crapo	1898	60,000	46,983		196,587			72	14
†20	Callender	(Geo. W. Knutson)										
21	Carroll	Sadie Stevens	Carnegie	1905	10,000	6,843	309	17,283	1,188	10	47	
22	Cedar Falls	Mary O. Stuart	Carnegie	1903	15,000	13,634	725	45,902	3,346	75	57	
23	Cedar Rapids	E. Joanna Hagey	Carnegie	1905	75,000	58,328	2,774	346,391	17,950		72	13
24	Centerville	Mrs. Lillian Hays	Drake	1903	30,000	10,180	549	41,373	1,830		34	
25	Central City	Mrs. Bertha Reed	Clegg	1917	2,000	3,571	53	5,700	192	47	14	
26	Chariton	Mrs. Ida R. Leonard	Carnegie	1904	11,000	7,454	210	39,623	4,237	99	36	
27	Charles City		Carnegie	1904	12,500	14,561	740	36,716			37	1
28	Cherokee	Bessie Fensler	Carnegie	1905	12,000	11,183	606	3,824	2,074	158	39	
29	Clarinda	Harriet Foster	Carnegie	1909	15,000	15,304	463	41,825	3,150	49	3	
30	Clarion	Mrs. B. B. Birdsall	Evarts	1907	10,000	6,786	171	21,632	1,345	75	30	
31	Clear Lake	Mrs. M. J. Bowman	Carnegie	1917	10,000	6,857	384	29,431	1,492	138	48	

32	Clinton	Mary A. Egan	Carnegie	1904	45,000	32,598	1,652	174,041	7,966	13	75	25
33	Colfax	Josephine Logsdon	Carnegie	1913	6,500	5,276	223	12,520	948	32	30	
34	Coon Rapids	Mrs. M. Schlotterback				2,727	272	10,327			9	
35	Corning	Idelle Riddle	Rawson	1900	3,000	7,301	212	13,889	1,852	21		
36	Corydon	Gertrude Rew	Carnegie	1919	8,000	4,177	184	19,397	965	32	21	
37	Council Bluffs	Eva T. Canon	Carnegie	1905	70,000	39,184		204,259	12,517	42	76	15
38	Cresco	Abbie Converse	Carnegie	1914	17,500	9,361	225	23,315	1,995	390	41	1
39	Davenport	Grace Shellenberger	Carnegie	1904	270,000	96,673	3,994	687,270	19,435		76	16
40	Decorah	Katherine Jewell		1922	9,000	3,998	252	2,886	1,721	269	40	
†41	Denison	Margaret Hunt	Carnegie	1904	12,500							
42	Des Moines	Grace D. Rose	City Tax	1904	350,000	192,821	11,543	901,279	47,683	81	76	82
43	De Witt	Elsie F. Saxton	Carnegie	1908	6,500	3,668	55	8,975	595	38	26	
44	Dubuque	May M. Clark	Carnegie	1902	100,000	47,635	1,092	256,420	13,470	32	75	34
45	Dunlap	Mrs. B. K. Manchester	Carnegie	1912	10,000	4,893	130	13,571			25	
46	Eagle Grove	Mrs. A. Lukensmeyer	Carnegie	1903	10,000	4,865	167	25,233	1,607	9	30	
47	Eddyville	Mrs. Edith Bruggen	City Hall			2,808	180	4,802	342	153	6	
48	Eldon	Reva Hughes	Carnegie	1913	7,500	4,581	127	11,709	771	138	33	
49	Eldora	Gladys Peterson	Carnegie	1903	10,000	9,490	93	2,783	1,950	19	59	
50	Emmetsburg	Mrs. Lillian Appleby	Carnegie	1912	10,000	6,568	349	21,468	1,501	123	30	
51	Estherville	Lucile Peterson	Carnegie	1903	10,000	11,203	303	39,700	2,170	213	42	
52	Fairfield	Emma L. Kirk	Carnegie	1893	40,000	21,631	1,150	33,112	3,159		48	
53	Forest City	Dr. Blanche Neil	City Tax	1899	2,000	4,301	401	12,977			30	
54	Fort Dodge	Isabella Hopper	Carnegie	1904	30,000	27,893	1,371	186,004			72	11
55	Fort Madison	Rebecca Hesser	Cattermole	1895	25,000	12,640	235	52,378	3,512	5	54	7
56	Galva	Mrs. Laura Burger				3,427	127	4,789	300	9		
57	Garner	Mrs. F. M. Spayde	Carnegie	1915	6,500	4,275	156	15,786			36	
58	Glenwood	Emma L. Hanna	Carnegie	1907	7,500	5,343	220	17,317	1,067	58		
*59	Grand Junction	Georgia Dawson				887		3,466			49	
*60	Greene	Delphia Wilder				2,779	230	7,211	225	84	8	
61	Greenfield	Isabel Sidey	Carnegie	1916	7,500	4,857	230	16,676	1,217	23	27	
62	Grinnell	Mrs. E. S. Bray	Stewart	1901	15,000	17,172	538	45,592	2,672	165	72	
63	Grundy Center	Mrs. W. R. Halden	Carnegie	1902	9,000	6,555	444	2,648	1,018	250	30	
64	Hamburg	Mrs. Ruth Holmes	Carnegie	1918	9,000	4,340	505	18,432	1,312	51	36	
65	Hampton	Mary E. Kingsbury	Carnegie	1905	11,000	8,478	570	35,969	1,317	69	45	
66	Harlan	Mrs. Minnie Brazie	H. H. Paup	1924	24,000	4,934	284	28,743	1,515	405	31	
67	Hawarden	Elsie Macomber	Carnegie	1903	5,000	3,810	119	9,375	1,068	11	30	
†68	Hawkeye	Mrs. Lillian Parker										
69	Humboldt	Nellie F. Pinney	Carnegie	1909	10,000	6,123	141	24,437	1,456	59	30	
70	Humeston	Mrs. Ruth C. Culmsee				1,771	86	4,352	592		29	
71	Ida Grove	Mrs. Frank Reed				2,920	312	6,836	1,829		9	
72	Independence	Neva M. Tabor	Munson	1894	15,000	9,265	196	25,172	1,260	31	33	
73	Indianola	Mary E. McCoy	Carnegie	1904	12,000	12,885	589	43,523	2,250			
74	Iowa City	Mrs. Jessie B. Gordon	Carnegie	1904	35,000	25,628	1,707	119,565	4,110	41	75	
75	Iowa Falls	Mrs. Vivian K. Ellis	Carnegie	1905	18,000	6,378	310	26,867	1,356	280	55	
76	Jefferson	Nellie Hopper	Carnegie	1904	10,000	7,183	378	17,544	889	544	28	
77	Keokuk	Nannie P. Fulton	Rice	1883	30,000	33,482	1,326	138,381	5,695	7	69	9
78	Knoxville	Ruth E. Browne	Carnegie	1913	10,000	7,428	244	25,763	1,603	77	25	
79	Lake City	Blanche I. Hackett	Carnegie	1910	7,500	4,721	264	16,549	913	86	16	

GENERAL STATISTICS FOR IOWA LIBRARIES—FREE PUBLIC LIBRARIES—Continued
April 1, 1925—March 31, 1926

26

IOWA LIBRARY COMMISSION

Number	Place	Librarian	Building			Books			Borrowers			
			Donor	Year erected	Cost	Total number volumes	Volumes added in 1925	Volumes loaned in 1925	City	Country	Hours open	Branches or stations
*80	Lake Mills	(Mrs. O. J. Sheldon)										
*81	Lake View	Doris Mann										
82	Laurens	Mrs. E. G. Coffin	Carnegie	1910	3,800	1,866	663	6,507			11	
83	LeMars	Ada Richards	Carnegie	1904	10,000	7,823	306	24,125	2,261		48	
84	Leon	Mrs. Sada F. Stout	Carnegie	1906	6,000	5,193	393	12,988	1,919		27	
85	Logan	Winifred McCoid	Carnegie	1920	10,000	4,563	47	9,758			8	
86	Malvern	Mrs. Alice B. Keckley	Carnegie	1917	8,000	3,346	194	8,060	644	226	30	
87	Manchester	Margaret Lindsay	Carnegie	1903	10,000	11,959	823	29,831	1,933	167	58	
88	Maquoketa	Helen M. Morse	Carnegie	1903	12,500	11,346	302	25,507	1,897	47	42	
89	Marengo	Ruth Beem	Carnegie	1905	10,000	5,483	43	11,004	377	23	30	
90	Marion	Lenna Huffman	Carnegie	1904	11,000	7,602	115	25,899	1,609	42	36	
91	Marshalltown	Alice Story	Carnegie	1904	30,000	19,813	570	103,115	7,541	82	75	8
92	Mason City	Lydia M. Barrette	Carnegie	1904	30,000	35,348	2,357	186,109	9,592		78	17
93	Maxwell	(Dr. P. Joor)				2,108	108	1,627			13	
94	Mediapolis	Ella M. Graham				4,332	595	7,877	250	228	14	
95	Missouri Valley	Estella Turner	Carnegie	1911	10,000	5,838	262	11,887	2,482	199	30	
96	Montezuma	Mrs. Marion H. Clark	Carnegie	1918	8,000	3,526	349	14,190	1,519		30	
97	Monticello	Mrs. Hilah Hutton	Carnegie	1904	12,500	6,495	124	14,748	1,275	18	33	
*98	Morning Sun	Lemma Beck										
99	Mt. Ayr	Louise Askren										
100	Mt. Pleasant	Elena E. Budde	Carnegie	1917	8,000	4,228	187	17,220	967	106	28	
101	Muscatine	Ellen G. Stocker	Carnegie	1905	12,500	2,168	513	33,944	2,230	62	72	
102	Nashua	Fannie V. Eastman	Musser	1902	48,000	21,127	848	88,078	8,355	42	72	3
103	Nevada	Golda Ausbury	Carnegie	1905	6,000	5,317	199	14,069	826	43	24	
104	New Hampton	Isabella Powers	Silliman	1900	10,000	4,443	281	21,714	1,012	21	42	
105	Newton	Gypsie N. Patton	Carnegie	1910	10,000	8,628	269	17,323	974	230	34	
*106	Northwood	Mrs. Julia Trustem	Carnegie	1902	10,000	15,475	741	81,683	3,048	196	72	2
107	Odebolt	Grace Hanson	City Bldg.									
108	Oelwein	Mrs. E. D. Gleason	Carnegie	1904	4,000	5,562	250	12,866	712	38	16	
109	Onawa	Mrs. A. W. Burgess	City Hall			7,429	118	34,713	2,991	35	42	
*110	Orange City	Mrs. B. H. Vande Waa	Carnegie	1909	2,000	12,722	332	34,326			45	3
			City Hall			1,443	53	4,849				

LIBRARY STATISTICS

111	Osage	Rena Gray	Carnegie	1910	10,000	8,972	332	27,302	1,553	86	36	
112	Osceola	Clarice J. Baird	Carnegie	1911	12,000	5,702	144	20,674	1,150	90	28	
113	Oskaloosa	Mary B. Lee	Carnegie	1903	22,500	23,070	1,538	107,858	7,963	456	66	3
114	Ottumwa	May B. Ditch	Carnegie	1902	50,000	47,679	5,823	203,999	8,213	163	75	10
115	Parkersburg	Mrs. L. F. Chamberlin	M. E. Church			3,729	192	13,856	544		12	
116	Paton	Mrs. W. S. Grant				2,477	67	4,378	273	141	6	
117	Paullina	Evelyn Cowan	Frothingham	1907	5,000	2,470	364		385	136	6	
118	Pella	Katherine DeKoning	Carnegie	1907	11,000	8,625	386	25,705	2,130	167	37	
119	Perry	Flora B. Bailey	Carnegie	1904	10,000	11,897	404	36,840	2,511	36		
†120	Primghar	(Mrs. Edith H. King)										
121	Red Oak	Sarah Palmer	Carnegie	1900	12,500	11,175	456	36,544	3,079	49	45	
122	Reinbeck	Sara Brown	Carnegie	1917	6,000	3,002	147	21,880	834	186	30	
123	Rock Rapids	Mrs. Nellie M. Wilson	Citizens	1908	6,000	6,554	270	16,285	1,013	6	36	
124	Rockwell City	Florence Griffith	Carnegie	1909	8,000	5,218	164	19,224	1,056	96	27	
125	Sac City	Mrs. H. R. Klove	Carnegie	1913	8,000	6,745	507	27,832	1,200	289	33	
126	Sanborn	Zaidee McCulloch	Carnegie	1912	4,000	4,871	459	9,380	678	38	8	
127	Sheldon	Lora Shipley	Carnegie	1909	10,000	7,095	301	17,982	1,671	40	36	
128	Shenandoah	M. Berdena Jay	Carnegie	1905	10,000	10,418	543	42,421	3,157	812	66	
129	Sibley	Mrs. H. J. Harvey	Carnegie	1917	10,000	3,429	158	16,574	1,215	242	32	
130	Sigourney	Mrs. Orel M. Crocker	Carnegie	1914	10,000	6,136	397	18,886	2,951	34	36	
131	Sioux City	Mildred Pike	Carnegie	1913	75,000	77,151	575	384,835	27,053		74	
132	Spencer	Mrs. O. M. Olds	Carnegie	1905	10,000	9,863	203	18,819	2,069	139		
133	Spirit Lake	Mrs. H. G. Gramstad	Carnegie	1912	10,000	5,224	302	17,847	1,512	68	33	
134	Storm Lake	Elizabeth Walpole	Carnegie	1906	10,000	11,344	797	36,449	2,841	75	35	
135	Stuart	Alice E. Peters	Carnegie	1908	6,000	6,684	326	17,231	850	84	30	
†136	Sutherland	Mrs. Florence Louthen	Mrs. Roma Wood									
137	Tama	Mrs. H. C. Woods	Carnegie	1907	8,000	6,284	203	18,113	1,625	10	15	
138	Tipton	Mayme Walters	Carnegie	1903	13,000	9,604	238	27,853	1,743	698	44	
139	Toledo	Mrs. Velma Harlow				5,878	367	11,667	1,003	68	27	
140	Traer	Ainslie Law	Carnegie	1915	10,000	3,733	166	15,413	645	205	27	
141	Villisca	Frankie J. Barker	Carnegie	1909	10,000	6,507	533	9,137	882	11	25	
142	Vinton	Elizabeth F. Willimas	Carnegie	1902	12,500	11,134	23	17,459	3,180	39	33	
143	Washington	Eva G. Denny	Chilcote	1901	6,000	11,459	168	23,494	1,016	80	36	
144	Waterloo	Callie Wieder	Carnegie	1905	45,000	48,289	972	287,633	12,743	166	76	42
145	Waukon	Jennie M. Jones	City Hall			4,007	276	19,150	1,363		30	
146	Waverly	Mrs. E. L. Kenney	Carnegie	1904	10,000	9,738	454	28,399	1,773		33	
147	Webster City	E. D. Burgess	Young	1905	50,000	17,975	625	48,102	2,196			
148	Wellman	Ella Weller				3,214	170	8,744	344	99	14	
149	West Branch	Mabel Leech	Enlow	1904	2,000	3,536	282	18,787	589	233	24	
150	West Liberty	Mrs. A. Stober	Carnegie	1906	7,500	5,855	246	16,096	932	138	30	
151	Whiting	Mrs. Alice Moad	Church			2,622		10,824	207	243	11	
152	Winterset	Mrs. B. E. Howard	Carnegie	1905	10,000	10,765	200	38,745	2,000	150	43	
153	Woodbine	Mrs. Belle H. True	Carnegie	1910	7,500	4,724	178	16,262	1,000	320	15	

*New libraries.

†No report received.

FINANCIAL STATISTICS OF IOWA LIBRARIES—FREE PUBLIC LIBRARIES

April 1, 1925—March 31, 1926

28

IOWA LIBRARY COMMISSION

Number	Place	Population	Year founded	Receipts				Expenditures									
				Income from city tax	No. mill city tax levy	Income from township tax	Income from other sources	Books	Binding	Periodicals	Building, furniture and grounds	Heat and light	Miscellaneous	Salaries			
														Libra-rians	Assistants	Janitor	Number em- ployed
1	Adel	1,566		\$ 1,500	5			\$ 64		\$ 38	\$ 1,668	\$ 58	\$ 38	\$ 312		\$ 55	1
*2	Akron	1,224															
3	Albia	5,166	1906	3,355	5			1,061	88	185	364	360	182	890	395	280	2
4	Alden	759	1882	826	5	\$ 345	\$ 25	231		78	129	208	103	375		240	1
5	Algona	3,913	1908	3,700	5		55	181	51	153	235	416	92	1,345		394	1
6	Alta	1,195		1,107			9	369		105	62		21	349		25	1
*7	Alton	1,017															
8	Ames	9,332	1904	7,850	5		2,102	1,649	225	181	168	788	298	2,100	3,376	430	3
9	Anamosa	2,377	1903	1,600	4			287		71	38	238		720	153	131	2
†10	Arnolds Park	531															
11	Arthur	248		75	1		1,723	48			245		17	150			1
12	Atlantic	5,524	1903	3,391				575	180	124	55	258	122	875	51	480	1
13	Audubon	2,124	1912	2,144			308	765		103	215	252		1,090		240	1
14	Bedford	2,042	1917	1,849	5		315	330	41	97	311	253	18	840		300	1
15	Belmond	1,736	1917	1,849	4		100	190		203	146	407	113	540		98	1
16	Bloomfield	2,370	1913	2,587	5			555	70	83	391	347	217	564		360	1
17	Boone	12,812	1885	8,659	5		757	849	120	187	1,165	2,180	170	1,140	2,306	459	5
18	Britt	1,587	1918	1,067				228	65	41	145	162	9	660		240	1
19	Burlington	26,375	1885	17,896			319	2,701	454	265	635	830	448	1,975	5,923	1,271	7
†20	Callender	390	1903														
21	Carroll	4,480	1900	2,706	5			173	67	98	64		79	1,200	112	78	1
22	Cedar Falls	6,841	1876	3,856	2.8		379	965	31	121	301	353	76	1,200	503	360	3
23	Cedar Rapids	50,561	1897	31,126	4¾	222	2,384	5,653	997	655	2,416	1,840	2,236	2,400	14,213	1,733	12
24	Centerville	8,611	1901	2,605	3.5		418	540	54	92	41	493	300	1916		510	2
25	Central City	764	1895					81		31	16	52	9	160			1
26	Chariton	5,226	1900	2,764	3			520	149	85	485	359	128	900		480	2
27	Charles City	6,435	1877	3,703		175	550	928	82	194	534	318	152	1,500	397	480	3
28	Cherokee	4,807	1898	4,472			267	1,132	226	157	312	13	175	2,072	155	300	3
29	Clarinda	4,683	1903	4,448	5	498	100	383		137	2,396	1,033	61	1,575	750	525	2
30	Clarion	2,743	1908	2,418			136	249	14	78	254	420	192	780	180	403	2

31	Clear Lake	2,884	1890	3,139	5		3	561	97	56	583	316	46	840	200	300	2
32	Clinton	26,436	1902	19,487			959	5,654	501	281	2,798	1,355	998	2,200	5,727	1,450	6
33	Colfax	2,541	1892	1,742	5		25	345	64	67	118	188	71	720		116	1
34	Coon Rapids	1,234		475	2		133	205			147	18	9	180		24	1
35	Corning	1,889	1897	1,716	3		134	300	121	96	58	298	42	975		305	1
36	Corydon	1,746	1919	1,600			245			111	172	150	3	520		120	1
37	Council Bluffs	39,795	1881	28,461	4.1		1,397	4,773	1,120	339	1,944	777	1,970	2,540	12,745	1,571	10
38	Cresco	3,114	1904	2,237		786	98	420	158	56	170	597	68	1,300	264	266	2
39	Davenport	52,469	1900	54,208	1.5	975	2,150	17,690	3,490	1,192	3,097	2,607	3,159	2,700	25,421	4,902	19
40	Decorah	4,141		1,879	2		196	575	41	149	231	74	47	675	243	306	2
41	Denison	3,437	1904														
42	Des Moines	141,441	1882	91,176	2 1/3		5,686	19,463	9,271	706	7,834	33,109	5,464	4,200	55,887	6,541	53
43	DeWitt	2,017	1902	1,775	4.5		97	231	225	60	58	473	42	779		28	1
44	Dubuque	40,996	1902	21,352				5,212	1,678	496	874	1,150	1,011	1,920	8,064	1,200	9
45	Dunlap	1,520	1913	1,089	5	566	75	50	22	57	85	253	66	480		128	1
46	Eagle Grove	4,222	1904	3,495			530	432	100	104	71	284	473	810	78	220	1
47	Eddyville	865	1909	323	3		191					7	104				1
48	Eldon	2,029	1907	968		486	362	338	91	76	166	140	53	525		307	1
49	Eldora	2,832	1878	2,423	5		107	316	137	86	163	906	89	1,200		230	1
50	Emmetsburg	2,688	1908	1,980	4.1		164	245		67	10	459	67	600	300	300	2
51	Estherville	5,084	1903	3,325	3			686	114	114	226		50	1,020	220	470	2
52	Fairfield	6,333	1853	5,321	4.4		761	1,048	174	214	445	517	249	1,500	1,000	720	3
53	Forest City	2,037	1909	1,783				654	195	131	254	130	93	700			1
54	Fort Dodge	21,702	1895	16,364		250		2,886		237	1,098	1,002	1,029	1,800	5,475	1,200	7
55	Fort Madison	11,229	1893	5,019			462	824	178	2,111	245	189	1,125	1,159	420		3
56	Galva	550	1907	548			6	188		36			7	176			1
57	Garner	1,312	1907	1,632	5	38		256	22	68	303	141	29	590		330	1
58	Glenwood	2,614	1906	1,387			335	43	72		325	195	30	540		195	1
59	Grand Junction	1,008		383	2.3		37	37					30				1
60	Greene	1,299	1926				342	145					13	110			1
61	Greenfield	1,774	1916	1,694	5		252.79	712	21	159	174		68	1,125	11		1
62	Grinnell	4,662	1894	2,548	3	130	736	942	233	235	1,275	124	535	1,500	1,320	422	3
63	Grundy Center	1,776	1912	1,720		117		561	32	125	17	188	207	780	76		2
64	Hamburg	1,903	1919	1,969			336	521	46	51	62	172	4	720		122	1
65	Hampton	3,351	1892	3,445			165	693	263	93	992	340	106	1,440	100	300	2
66	Harlan	2,811		2,706	4			432		102	148	222	48	1,200	22	480	1
67	Hawarden	2,612	1901	1,986			15	327	51	48	579	141	30	645		162	1
68	Hawkeye	537	1898														
69	Humboldt	2,217	1909	2,542	5		147	384		102		302	84	720		354	1
70	Humeston	1,036		381	2			28		16	188	27	72	200		77	1
71	Ida Grove	2,073		450	1		112	187		27	15		20	195			1
72	Independence	3,409	1873	1,618	2			400	147	91	472	192	71	600	75	290	1
73	Indianola	3,581	1884	4,985	4.9			963	223	122	26	542	208	1,475	716	363	3
74	Iowa City	15,289	1897	11,752				2,735	473	292	498	643	670	1,800	3,079	1,020	7
75	Iowa Falls	4,128	1895	4,112	4.5		206	949	226	159	138	804	134	999	318	229	1
76	Jefferson	3,133	1901	2,425			107	207	42	58	16	340	62	975		361	1
77	Keokuk	14,501	1863	7,815	2		1,587	2,707	112	220	1,212	560	356	1,080	2,231	780	4
78	Knoxville	3,801	1912	1,775	4		592	164	148	64	546	285		650	390	350	2
79	Lake City	2,211	1905	1,405	3.3			236		65		242	10	600		240	1

FINANCIAL STATISTICS OF IOWA LIBRARIES—FREE PUBLIC LIBRARIES—Continued

April 1, 1925—March 31, 1926

30

IOWA LIBRARY COMMISSION

Number	Place	Population	Year founded	Receipts				Expenditures									
				Income from city tax	No. mills city tax levy	Income from township tax	Income from other sources	Books	Binding	Periodicals	Building, furniture and grounds	Heat and light	Miscellaneous	Salaries			
														Librarians	Assistants	Janitor	Number employed
*80	Lake Mills	1,588															
*81	Lake View	886															
82	Laurens	864	1906	746				348			741	107	4	212	39		1
83	Le Mars	4,553	1905	780	1.5				406		161	984	388	42	1,200	480	1
84	Leon	1,990	1906	1,423				256		69	204	159	22	400	12	72	1
85	Logan	1,432	1913	1,135		197	53	58		29	84	235	10	300	105	250	1
86	Malvern	1,257	1913	1,006			9	233	13	37	131	187	41	420		81	1
87	Manchester	3,455	1900	2,721				600	86	97	457	464	154	1,500		192	1
88	Maquoketa	3,643	1904	3,427			154	650	49		365	305	172	1,020	370	300	2
89	Marengo	2,118	1904	2,123			31	153		73	272	313	42	640		375	1
90	Marion	4,530	1902	2,489				315	32	113	102	382	101	600	205	217	2
91	Marshalltown	16,868	1898	10,370	4		702	2,290	800	252	691	808	453	2,400	3,032	600	6
92	Mason City	22,682	1893	21,045	4.5		739	5,075	588	489	1,788	1,571	1,030	2,400	9,247	1,210	9
93	Maxwell	755	1901	394				181	21	148	15	8	150				1
94	Mediapolis	839		556	2		69	761			316	40	10	325			1
95	Missouri Valley	4,283	1887	2,786	5		175	389	65	65	162	300	70	917		345	1
96	Montezuma	1,323	1919	2,443		300	209	437	117	85	88	327	68	698		280	1
97	Monticello	2,215	1904	2,404				253	75	95	181	332	25	780	127	224	1
*98	Morning Sun	847															
99	Mount Ayr	1,677	1913	2,144	4.5			208	64	83	84	235	78	900	25	127	1
100	Mount Pleasant	4,445	1902	3,488	5		195	967	212	159	477	171	59	760	667	300	3
101	Muscatine	16,821	1901	11,478	2			1,868	513	279	1,392	822	328	1,680	4,152	1,100	6
102	Nashua	1,227	1902	1,246	5		116	247	59	65	69	129	22	660	56	92	1
103	Nevada	2,811	1876	1,155	2		2,157	391		103	131	431	74	1,320	76	173	2
104	New Hampton	2,486	1898	2,347	4.4		1,414	183	40	50	2,024	176	30	788	93	210	3
105	Newton	765	1896	6,785			410	1,520	200	150	533	431	401	1,457	1,540	423	3
*106	Northwood	1,499															
107	Odebolt	1,294	1898	1,595			505	493		91	146	94	68	685		180	1
108	Oelwein	8,058	1911	1,764	2			437	227	112	182	125	1,080	304			2
109	Onawa	2,043	1902	2,184		1,191	480	700	172	260	318	35	128	1,200	660	180	2
*110	Orange City	1,620			1		81	158		31	61		2	135			1

111	Osage	2,953	1875	3,598	3	665	817	187	172	361	420	122	1,010	433	1
112	Osceola	2,727	1911	2,037	3.7	46	294	13	66	111	264	52	600	135	2
113	Oskaloosa	10,331	1899	9,224	4.5	392	2,079	575	277	600	1,139	896	15,087	890	6
114	Ottumwa	26,075	1902	4,762		10,000	5,574	1,930	461	1,483		3,301	2,200	6,288	8
115	Parkersburg	1,110		782	2		269		43	26	150	19	384	5	1
116	Paton	1,211	1909	353		22	47			195	10	9	50	79	1
117	Paullina	999	1908	790			343			348	13	5	132	65	1
118	Pella	3,079	1906	2,662	5	23	599	33	132	149	188	93	780	617	3
119	Perry	5,642	1904	2,418		100	796	92	132	9	597	79	1,140	385	2
120	Primghar	991					40	30			46				1
121	Red Oak	5,668	1908	4,480	4	263	1,474	311	206	165	520	317	1,260	540	2
122	Reinbeck	1,417	1915	1,572			83	44	77	4	328	54	720	27	1
¶123	Rock Rapids	2,098	1893	1,544		10	393	19	237	207	400	89	1,115		1
124	Rockwell City	2,183	1909	3,209	5	97	530	70	90	591	445	108	650	31	1
125	Sac City	2,682	1912	2,113	4.5	567	1,064	82	99	218	348	117	960	132	2
126	Sanborn	1,373	1901	10,090	5		779	117	67	59	99	1,433	204		1
127	Sheldon	3,048	1897	2,962		7	541	273	96	235	357	39	1,000	90	1
128	Shenandoah	5,194	1905	4,398	5		574	218	128	690	461	70	2,040	43	2
129	Sibley	1,823	1908	1,681		629	154	59	3	18	349	40	1,125	4	1
130	Sigourney	2,278	1914	2,645	5		682	54	80	131	219	175	780		1
131	Sioux City	76,411	1877	48,962		2,125	6,387	1,181	804	5,108	2,120	3,885	4,000	24,128	28
132	Spencer	4,689	1905	2,763		59	495	125	129	111	439	14	820	327	2
133	Spirit Lake	1,723	1894	2,586	5	402	753	89	88	23	316	61	920		1
134	Storm Lake	3,906	1906	5,028	5		1,108	91	182	677	336	84	1,367	650	3
135	Stuart	1,531	1901	1,443			402	98	82	34		47	659		1
†136	Sutherland	823													
137	Tama	2,656	1906	1,790	3.86		505	4	91	119	203	29	480	242	1
138	Tipton	2,109	1901	3,079	5	322	506	209	14	625	311	211	1,020	415	2
139	Toledo	1,659	1920	831	4	30	606	29	91	306	65	34	840		1
140	Traer	1,400	1912	698		392	197	23	44	98	344	133			1
141	Villisca	2,044	1908	1,786	5	428	855	130	70	203	255	125	648	175	1
142	Vinton	3,259	1902	2,060	3.6		480		114	264	114	22	750	81	1
143	Washington	4,288	1878	2,471	2.5		474	65	141	133	146	44	900	226	2
144	Waterloo	36,771	1897	36,940	5	503	7,188	2,210	891	1,181	1,455	2,400	2,600	16,171	18
145	Waukon	2,662		1,944			394	20	77	24		33	950	120	1
146	Waverly	3,599	1865	3,204	3		702	119	234	76	420	104	720	264	2
¶147	Webster City	6,649	1908												
148	Wellman	882	1908	795	3		217	44	16	138	20	29	339	18	1
149	West Branch	747	1904	912	4.3		251		62	84	32	81	360		1
150	West Liberty	1,710	1900	2,108		463	397	46	105	207	208	312	780	90	1
¶151	Whiting	627	1913				73		48		225	5	300		1
152	Winterset	3,063	1892	1,825	5		294			297	428		1,500	600	2
153	Woodbine	1,383	1908	1,012	3	511	200	60	102	452	172	70	480	240	1

*New library.
†No report received.
‡Staff salaries included.
¶Report for fifteen months.
||Endowed library.

STATISTICS FOR IOWA LIBRARIES FOR 1925—ASSOCIATION AND SUBSCRIPTION LIBRARIES

32

IOWA LIBRARY COMMISSION

Place	Librarian	Management	Population	Number volumes added in 1925	Total number of volumes	Number of volumes loaned in 1925	Hours open
Afton	Mrs. Bertha Maneely	Library Association	1,016	75	2,000	1,920	2
†Allerton			928				
†Anita	Mrs. Ruby E. Biggs	Library Association	1,160				
Anthon	Mrs. A. L. Wolfe	Women's Club	783	75	1,780	500	4
*Arlington	Mrs. C. H. Gitchell	Triangle Club	715	100	100	140	4
Aurelia	Pearl Miller	Library Association	677	29	687	1,205	9
Avoca	Mrs. Walter Davis	Library Association	1,548	50	2,750	3,416	4
Battle Creek	Mrs. Frank Campbell	Library Association	799	176	1,530	1,535	
Belle Plaine	Mrs. Ida H. Rank	Library Association	3,595	73	2,809	3,290	14
*Bellevue	Nettie B. Lenz	Library Association	1,926	659	1,709	3,989	11
Brooklyn	Gertrude Newkirk	Columbian Club	1,150	95		3,331	2
†Buffalo Center	Mrs. Fred Miller	Community Club	824				
Burt	Lulu Hawcott	Library Association	548	132	564	2,500	4
Clearfield	Mrs. Amy Townsend	Library Association	648	54	1,099	2,899	10
Correctionville	Mrs. F. W. Woodruff	Library Association	1,025	145	3,475	5,203	5
Corwith	Elva Stambaugh	American Legion Auxiliary	556	97	470		6
Creston	Bella Anderson	Board of Education	8,160	24	5,300	10,638	38
Dow City	Ellen Goddard	Library Association	506	72	1,263	1,709	4
Dumont	George S. Brown	Library Association	700	50	600	1,300	11
Early	Mrs. J. W. Graham	Civic Improvement Club	545		1,200	4,000	30
†Elliott	Mrs. Mae Ator	Library Association	498				
†Everly	Ella Rolf	Woman's Club	527				
†Exira	Mrs. Lucile Fulton	Thursday Club	823				
Farmington	Evea C. Humphrey	Library Association	1,091	152	2,570	4,204	3
Garden Grove	Hazel L. Vail	Library Association	618	221	4,001	7,872	16
George	Mrs. C. C. Crawford	Woman's Club	912	374	374	50	3
Gilmore City	Mrs. C. M. Watkins	W. C. T. U.	905		600		8
Glidden	Mrs. Lillian Powers	Woman's Club	889		1,000		5
Gowrie	Mrs. Caroline Messerole	Library Association	994	7	575		3
Griswold	Mrs. Guy DeWitt	Civic Club	1,106	225	1,000		11
*Guthrie Center	Ina Bates	Woman's Club	1,824	156	675		12
*Harris	Mrs. J. H. Nichol	Woman's Club	299		175		5
Hospers	M. Jansma	Library Association	599	50	600		48
Inwood	Mrs. C. Ladd		751	250	681	3,118	6

Ireton	Mrs. Charles Atwood	American Legion Auxiliary	674	276	750	1,100	10
†Jericho (New Hampton)	Willy Bruckel	Soldiers Union					
Jesup	Mrs. W. W. Blasier	Even Dozen Club	716	60			3
Keosauqua	Mrs. Estelle B. Walker	Library Association	956	113	2,309	1,860	9
Kiron	N. Florence Johnson	B. Y. P. U.	285	50	1,132	1,798	4
†Lake Park	Mrs. J. G. Chrysler	Woman's Club	730				
†Lakota	Mrs. H. Lamont Dalton		462				
Lamoni	Audentia Kelley	Library Association	1,643	97	1,754	4,087	8
Letts	Mrs. Harriet Shellabarger	Library Association	286	23	974	1,341	6
Lewis	Eunice Porter	Crescent Club	575	25	3,075	2,000	6
Lorimor	Mae L. Courtney	Library Association	601	70	595	2,074	8
Lost Nation	Marie Mohl	Hearthstone Club	541	10	466	1,718	3
McGregor	Mrs. Lena D. Myers	Library Association	1,200	65	802	2,500	4
*Manly	Mrs. J. H. Schafer	Library Association	1,475				
Manson	Mary E. Horton	Woman's Club	1,429	300	1,035	2,600	4
†Mapleton	Iris Wilson	Public School	1,333				
Marathon	Mrs. J. Delahunt	Library Association	558	137	1,100	4,200	6
Marcus	Myrtle Willey	Library Association	1,056	118	1,891	4,200	8
Martinsburg	Relda Hampton	Library Association	260	122	500	658	3
Milford	Mrs. Q. C. Guthrie	Woman's Club	1,103	434	1,042	5,484	6
Mitchellville	Fannie Brown	Library Association	773	75	2,000	1,500	8
*Murray	W. F. Johnson	School Board	792		450		6
New London	Clara B. Kongable	Ricardo Club	1,333	30	1,240	2,500	3
New Sharon	Mrs. C. W. Phillips	Woman's Club	1,090	90	1,600	1,500	5
Newell	Lulu Moorhouse	Library Association	866	101	464		4
*Oakville	Mrs. Clark Sexton	Library Association	413		350		8
Ocheyedan	Mrs. Lulu Hormel	W. C. T. U.	615	198	804	2,187	4
*Oxford Junction							
Panora	Ethie Boblett	Woman's Club	904	77	1,258	1,547	8
Pocahontas	Mrs. W. C. Ralston	Woman's Club	1,353	20	243	1,077	4
†Pomeroy	Helen Oehmke	Community Club	844				
Postville	Amy Maier	Library Association	1,030	100	2,000		
*Prairie City	Mrs. C. R. Van Vorhis	Community Club	772	600	600	120	8
*Preston	Margaret Godes	Library Association	656	712	712	1,265	
†Redfield	Martha Williams	Woman's Club	734				
Riceville	Mrs. Eva Morey	Library Association	972	348	1,529	2,645	
Rockford	S. Jennie Fullerton	Library Association	996	146	1,246	2,940	30
†Rockwell	Mrs. Grace R. McClelland	Library Association	734				
*St. Charles	Margaret Armstrong	Booster Club	411	112	680	3,807	12
Salem	Mrs. Ethel Garretson	Woman's Club	511	20	800	525	3
*Schaller	Mrs. Charles E. Kelley	Library Association	733		1,058	2,500	10
Scranton	Grace Lewis	Library Association	953	82	1,257		6
Sheffield	Mrs. M. C. Perrin	Library Association	1,026	62	816		6
*Sidney	Mrs. Hugh S. Jackson	Library Association	1,111				
†Silver City	Mrs. R. P. Galt	Woman's Club					
Sioux Rapids	DeNora Skinner	Library Association	936	316	1,551	5,572	11
Story City	Mrs. C. J. Ristvedt	Library Association	1,459	498	1,674	6,176	9

STATISTICS FOR IOWA LIBRARIES FOR 1925—ASSOCIATION AND SUBSCRIPTION LIBRARIES—Continued

Place	Librarian	Management	Population	Number volumes added in 1925	Total number of volumes	Number of volumes loaned in 1925	Hours open
*Stratford	Mrs. Ada L. Beech	P. T. A.	685				
Swea City	Mrs. L. E. Dye	Thursday Club	699	96	477	1,200	3
*Titonka	Mrs. C. H. Downs	Woman's Club	445	131	598	1,310	3
Union	Arthur Renaud	Chapin School	577	65	1,416	504	2
*Volga	Ella D. McGregor	Study Club	400		1,350		2
Walnut	E. C. Thompson	Library Association	913	40	200	2,810	
*Wapello	Mrs. V. L. Christie	Woman's Club	1,419	819	819	1,100	30
Wayland	Marie M. Imhoff	Mennonite Sunday School	658	50	438	1,560	2
What Cheer	Mrs. P. F. Madden	Thursday Club	1,805				
†Winfield	Mrs. William Bowers	Improvement Club	985				
Winthrop	Mrs. M. A. Dunlap	Library Association	575	45	2,000	1,800	4

*New libraries.

†No report received.

COLLEGE AND ACADEMY LIBRARIES

Place	Name of Library	Librarian	Volumes Added in 1925	Total Number Volumes
Cedar Rapids	Coe College	Betty H. Pritchett	2,811	26,025
Clinton	Wartburg College			
Davenport	St. Ambrose College	Rev. J. B. Code	500	10,000
Decorah	Luther College	Karl T. Jacobsen	1,510	31,708
Des Moines	Des Moines University	Eva M. Page	834	23,852
Des Moines	Drake University	Mary Nethercutt	1,637	33,184
Dubuque	Columbia College	L. Kuenzel	1,857	20,597
Dubuque	University of Dubuque	Paul Elo	200	12,000
Fairfield	Parsons College	Elva E. Rulon	1,106	15,925
Fayette	Upper Iowa University	Dora F. Carter	199	10,000
Forest City	Waldorf College	Martha Wangberg	200	1,400
Grinnell	Grinnell College	Isabelle Clark	2,080	74,330
Hopkinton	Lenox College	Mabel Briney	52	10,319
Indianola	Simpson College	Ellen Creek	809	18,982
Iowa Falls	Ellsworth College	Novella O'Rourke		
Lamoni	Graceland College	Lyda T. Elefson	720	12,726
LeMars	Western Union College	B. F. Zuehl	179	6,740
Mt. Pleasant	Iowa Wesleyan College	Mrs. F. McKibbin	737	22,567
Mt. Vernon	Cornell College	May L. Fairbanks	1,377	56,549
Oskaloosa	Penn College	May Hunt	1,490	12,418
Pella	Central College	Marie Greiner	1,240	10,243
Sioux City	Morningside College	Maude A. Price	1,819	24,700
Storm Lake	Buena Vista College	Blanche L. Bailey	441	14,224
Waverly	Wartburg Normal College	Magdalene K. Guetzlaff	176	3,568
University Park	John Fletcher College	Daisy Dean		

MISCELLANEOUS LIBRARIES

Cedar Rapids	Masonic Library	Charles C. Hunt	4,177	32,541
Davenport	Academy of Sciences	J. H. Paarmann	932	76,596

STATE SUPPORTED LIBRARIES

Ames	Iowa State College	Charles H. Brown	10,940	127,278
Cedar Falls	Iowa State Teachers Coll.	Anne S. Duncan	4,514	82,951
Des Moines	Historical Department	Alice Marple	1,679	30,515
Des Moines	State Library (including Law and Medical)	Johnson Brigham	8,314	193,994
Des Moines	Traveling Library	Grace C. Murphy	7,415	69,097
Iowa City	State Historical Society	Ruth A. Galaher	3,024	69,000
Iowa City	State University	John B. Kaiser	19,381	250,363
Iowa City	S. U. I. Law Library	Helen S. Moylan	4,307	41,736

LIBRARIES IN STATE INSTITUTIONS UNDER BOARD OF CONTROL

Librarian—Position Vacant—Statistics Furnished by Board of Control.

Place	Name of Library	Number of Volumes Added in 1925	Total Number of Volumes
Anamosa-----	State Reformatory -----	64	1,508
Cherokee-----	State Hospital -----		
Clarinda-----	State Hospital -----		722
Davenport-----	Soldiers' Orphans' Home-----	108	2,287
Eldora-----	Training School for Boys-----	180	3,125
Fort Madison-----	State Penitentiary -----		6,441
Glenwood-----	Institution for Feeble-minded Children	290	1,007
Independence-----	State Hospital -----		4,548
Marshalltown-----	Iowa Soldiers' Home-----	64	1,508
Mitchellville-----	Training School for Girls-----	20	1,842
Mt. Pleasant-----	State Hospital -----		
Oakdale-----	State Sanatorium -----	526	3,242
Rockwell City-----	Women's Reformatory -----		640
Toledo-----	Juvenile Home -----	1,432	3,548
Woodward-----	State Hosp. and Colony for Epileptics		1,314

