

A d d e n d u m

Iowa Department of Transportation
Office of Contracts

Date of Letting: December 15, 2015
Date of Addendum: December 10, 2015

B.O.	Proposal ID	Proposal Work Type	County	Project Number	Addendum
110	52-5557-619	PCC PAVEMENT - WIDENING	JOHNSON	STP-A-5557(619)--86-52	15DEC110.A03

Make the following changes to the PROPOSAL SCHEDULE OF PRICES:

Change Proposal Line No. 0550 2554-0114012 WATER MAIN, TRENCHED, POLYVINYL CHLORIDE PIPE (PVC), 12 IN.:

From: 2,630.000 LF

To: 2,550.000 LF

Add Proposal Line No.0752 2554-0112012 WATER MAIN, TRENCHED, DUCTILE IRON PIPE (DIP), 12 IN.; 80.000 LF

ESTIMATE REFERENCE NOTE:

REFER TO SHEET MW.02. PIPE IS REQUIRED TO HAVE NITRILE GASKETS.
WORK INCLUDES PROTECTION AND SUPPORT OF EXISTING STORM SEWER
CROSSINGS, AND PLACEMENT OF FLOWABLE MORTAR AND BOND
BREAKERS AT THE CROSSING LOCATIONS.

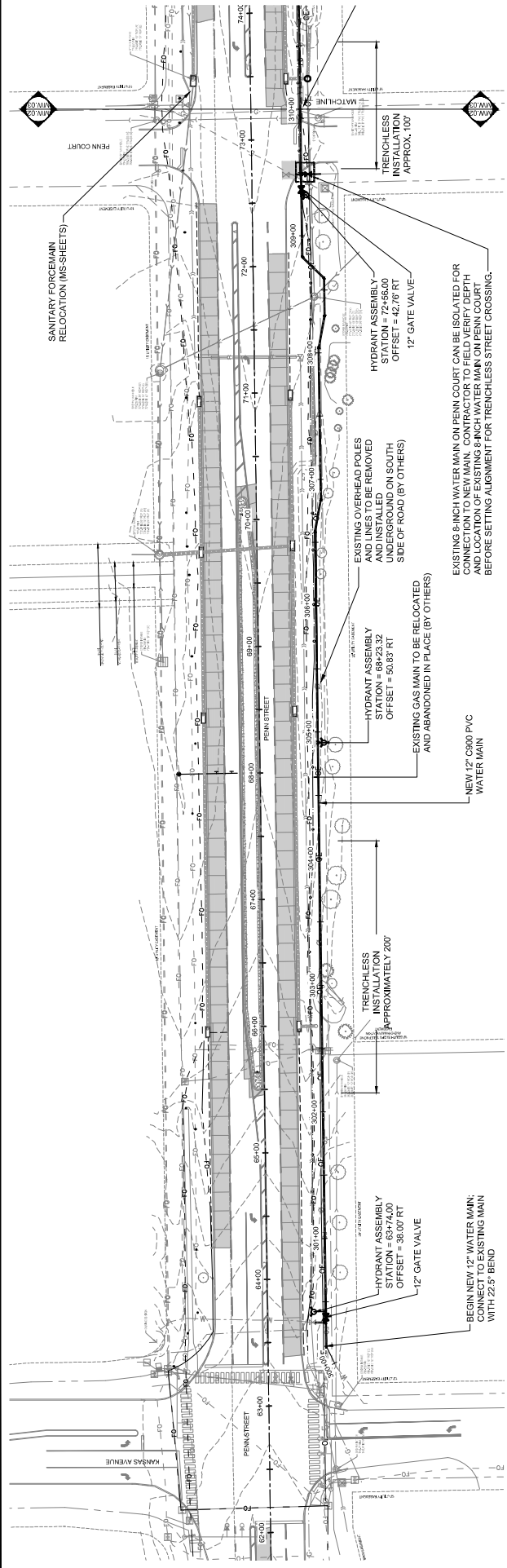
If the above changes are not made, they will be made as shown here.

Replace plan sheet MW.02 with the attached:

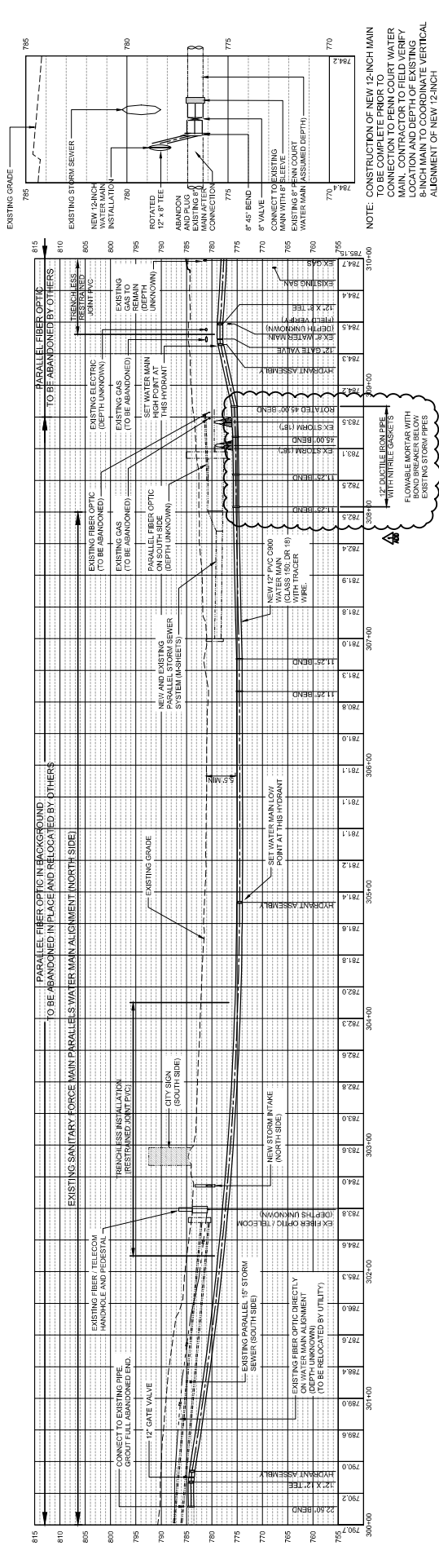
Make the following changes to the Plans:

DELETE the following plan note located on each of the "Steel Mast Arm" details on Sheet N.11:

POLES AND MAST ARMS SHALL BE PAINTED PER SSPC PAINT SPECIFICATION
NUMBER 36 QUV-A



WATER MAIN PLAN
1\"/>



WATER MAIN PROFILE
1\"/>

NOTE: CONSTRUCTION OF NEW 12-INCH MAIN TO BE COMPLETE PRIOR TO CONNECTION TO PENN COURT WATER MAIN. CONTRACTOR TO FIELD VERIFY LOCATION OF EXISTING 8-INCH MAIN TO COORDINATE VERTICAL ALIGNMENT OF NEW 12-INCH TRENCHLESS INSTALLATION.

DETAIL - PENN COURT CONNECTION
1\"/>