

A d d e n d u m

Iowa Department of Transportation

Date of Letting: December 15, 2015

Office of Contracts

Date of Addendum: December 8, 2015

B.O.	Proposal ID	Proposal Work Type	County	Project Number	Addendum
112	77-7875-638	PCC PAVEMENT - GRADE & REPLACE	POLK	STP-U-7875(638)--70-77	15DEC112.A03

Make the following changes to the PROPOSAL SCHEDULE OF PRICES:

Change Proposal Line No. 0270 2435-0140196 MANHOLE, STORM SEWER, SW-401, 96 INCH :
From: 6.000 EACH
To: 4.000 EACH

Add Proposal Line No. 0851 2435-0140300 MANHOLE, STORM SEWER, SW-403, 2.00
EACH

Add Proposal Line No. 0721 2599-9999005 LINE STOP 1.00 EACH

Temporary line stop required. Refer to Sheet U.3.
Method of Measurement: Each line stop installed will be counted for payment.
Basis of Payment: Payment will be at the contract unit price for each.

Add Proposal Line No. 0722 2599-9999005 WATER MAIN RELOCATION 2.00 EACH

All work and materials shall be per Section 2554 of the Standard Specifications.
Method of Measurement: Lowering water main per Sheet U.3 will be counted at each
location.
Basis of Payment: Payment for each lowering shall be full compensation for all labor,
equipment, and materials necessary to lower water main, including 8" PVC pipe, fittings,
connections to existing main, tracer wire, thrust blocks, structural support for storm
sewer, disinfection and flushing.

Make the following changes to the plans:

Please add SW-403 (effective date 4-21-09) to the list of Standard Road Plans on Sheet C.3.

Please replace sheets M.1 and M.4 with the attached revised sheets.
Structures 48A and 50A have changed from SW-401 (96" diameter) to SW-403.

Please add the attached sheet U.3 and SUDAS detail 3010.901.

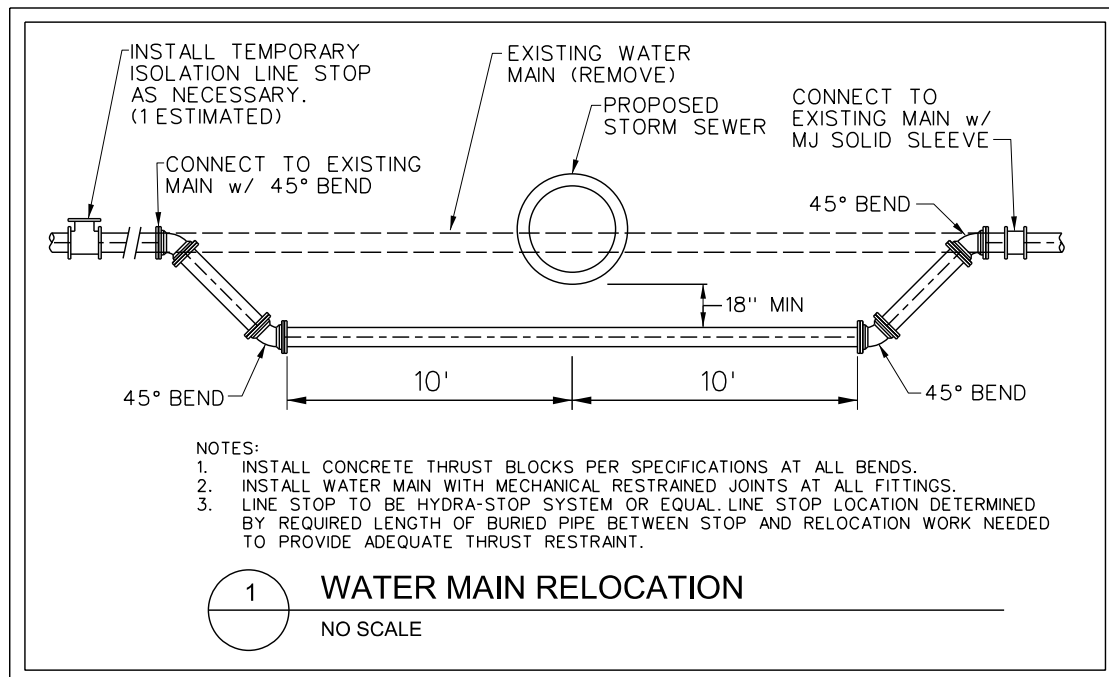
TABULATION OF STORM SEWER														* DOES NOT INCLUDE LENGTH OF FES:													
INTAKES AND UTILITY ACCESSSES					NOTES					STORM SEWER PIPES																	
NO.	LOCATION	TYPE	FORM, INLET, GRADE		PIPE NO.	LOCATION PIPE	TYPE OF PIPE	LENGTH OF PIPE (FEET)	PIPE DIAMETER (IN.)	PIPE SLOPE OF PIPE (IN.)	FLOW LINE	PAY LENGTH OF PIPE (FEET)	NOTES														
						FROM					IN	OUT															
1	1253+98.28, 25.0' L	FES				1	1A	20000	45.00	15	4.062	970.23	968.16														
1A	1251+50.00, 42.0' L	SW-401	972.86			2	1A	20000	15.00	15	4.062	969.68	965.46														
2	1251+96.00, 40.0' L	SW-506	968.03			3	1A	20000	248.00	24	3.032	961.65	953.30														
3A	1253+98.28, 30.0' R	FES				3	3A	20000	44.00	18	3.642	969.73	967.91														
3A	1253+50.00, 42.0' R	SW-401	972.86			3A	3A	4	20000	154.00	18	3.032	967.81	963.15													
4	1251+96.00, 40.0' R	SW-506	968.03			4	2	20000	80.00	24	1.252	962.75	961.75														
5	1248+66.53, 77.5' R	SW-505	956.90			5	5	6	20000	90.00	15	5.502	953.20	952.75													
6	1249+48.00, 40.0' R	SW-506	958.52			6	6	7	20000	80.00	15	1.142	952.65	951.74													
7	1249+48.00, 40.0' L	MOD. SW-506	958.52			7	7	8	20000	288.00	24	2.902	951.14	942.79													
8	1246+60.00, 40.0' L	SW-506	948.88			8	8	9	20000	130.00	30	1.452	942.39	940.50													
9	1245+30.00, 54.0' L	SW-401	947.15			9	9	10	20000	105.00	30	1.452	940.40	938.88													
10	1244+25.00, 52.0' L	SPECIAL 1	944.97			10	10	16	20000	112.00	36	1.402	937.36	935.77													
11	1243+80.00, 40.0' R	SW-505	942.68			11	11	12	20000	100.00	15	1.502	943.07	941.57													
12	1243+80.00, 40.0' R	SW-503	942.68			12	12	13	20000	62.00	15	1.502	941.47	940.54													
13	1244+98.28, 42.0' R	SW-401	946.50			13	13	10	20000	94.00	30	1.002	938.70	937.76													
14	2241+83.20, 71.1' L	FES				14	14	16	20000	28.00	30	5.042	939.69	938.67													
15	2241+45.98, 34.0' L	MOD. SW-506	942.66			15	15	16	20000	36.00	30	1.402	934.24	933.74													
16	2241+83.20, 36.0' L	SW-401	943.42			16	16	17	20000	82.00	48	1.352	932.54	931.43													
17	2241+83.20, 46.0' R	SPECIAL 1	942.19			17	17	40	20000	112.00	48	1.482	931.33	929.67													
20	2237+95.00, 70.4' L	SW-513	949.09			20	20	21	20000	36.00	24	4.332	945.75	944.19													
21	2237+95.00, 34.0' L	SW-506	949.61			21	21	15	20000	350.00	24	2.702	944.09	934.64													
23	2237+95.00, 34.0' R	SW-505	949.61			23	23	21	20000	68.00	15	1.002	945.61	944.93													
28	2250+16.2, 83.6' L	SW-505	961.40			28	28	29	20000	50.00	15	1.002	956.79	956.29													
29	2250+61.37, 83.4' L	SW-506	961.97			29	29	29A	20000	34.00	24	1.352	955.69	955.37													
29A	2250+76.87, 64.1' L	SW-401	963.50			29A	29A	30	20000	28.00	24	1.802	955.38	954.66													
30	2251+01.00, 34.0' L	MOD. SW-506	962.65			30	30	31	20000	65.00	24	1.802	955.38	954.66													
33	2251+01.00, 34.0' R	MOD. SW-506	962.65			33	33	34	20000	320.00	24	2.602	953.05	944.33													
34	2247+80.00, 34.0' R	MOD. SW-506	952.56			34	34	36	20000	72.00	24	3.152	944.63	942.37													
35	2247+07.00, 34.0' L	SW-505	951.11			35	35	36	20000	70.00	15	1.002	946.50	945.80													
36	2247+07.00, 36.0' R	SW-401	951.69			36	36	37A	20000	230.00	30	1.502	941.97	938.32													
37	2244+77.00, 34.0' L	SW-505	946.76			37	37A	20000	70.00	15	1.002	942.15	941.45														
37A	2244+77.00, 36.0' R	SW-401	947.12			37A	37A	38	20000	33.00	30	1.982	938.42	937.76													
38	2244+44.00, 34.0' R	MOD. SW-506	945.88			38	38	39	20000	82.00	30	1.602	937.66	936.35													
39	1242+36.00, 54.0' R	SW-401	943.75			39	39	40	20000	100.00	30	1.602	936.25	934.65													
40	1242+36.00, 47.0' L	SW-401	943.15			40	40	42A	20000	278.00	60	1.002	927.96	924.90													
41	1239+58.00, 47.6' R	SW-505	933.34			41	41	42	20000	88.00	15	2.002	928.73	926.97													
42A	1239+58.00, 40.0' L	SW-401	931.37			42A	42A	46	20000	6.00	15	2.002	926.87	926.74													
43	1236+58.00, 72.0' R	SW-513	920.54			43	43	44	20000	32.00	24	1.002	916.16	912.86													
44	1236+58.00, 40.0' R	SW-505	921.49			44	43	44	20000	32.00	24	1.472	917.29	916.82													
45	1236+58.00, 40.0' L	SW-505	921.49			44	44	45	20000	80.00	24	1.002	916.07	915.27													
46	1234+22.97, 40.0' L	SW-401	922.27			45	45	46	20000	6.00	24	1.502	915.17	915.08													
47	1234+22.97, 40.0' R	SW-505	917.30			46	46	48A	20000	235.00	60	1.102	911.02	908.43													
48	1234+22.97, 40.0' L	SW-505	917.30			47	47	48	20000	80.00	18	1.202	912.42	911.46													
48A	1234+22.97, 47.0' L	SW-403	918.08			48A	48A	50A	20000	6.00	18	2.602	911.36	911.20													
49	1232+80.00, 40.0' R	SW-505	917.93			49	49	50	20000	142.00	66	0.722	908.03	907.01													
50	1232+80.00, 40.0' L	SW-505	917.93			50	49	50	20000	80.00	15	1.002	913.32	912.52													
50A	1232+80.00, 47.0' L	SW-403	918.71			50A	50A	51	20000	36.00	66	0.802	906.91	906.36													
51	1232+80.00, 91.4' L	FES				51	50A	51	20000	36.00	66	0.802	906.91	906.36													
52	3230+11.85, 33.8' R	SPECIAL 1	919.98			52	52	53	20000	80.00	16	1.002	913.04	912.44													
52A	3230+11.85, 44.8' L	SW-505	919.87			52A	52A	53A	20000	74.00	15	1.002	912.34	911.40													
53	1228+39.00, 54.0' R	SW-401	919.39			53	53	53A	20000	94.00	36	1.002	912.34	911.40													
53A	1227+45.00, 54.0' R	SW-401	918.71			53A	53A	55	20000	173.00	36	1.002	911.30	909.57													
54	1225+72.47, 40.0' L	SW-505	917.62			54	54	55	20000	80.00	15	1.502	912.62	911.42													
55	1225+72.47, 40.0' R	MOD. SW-506	917.62			55	55	56	20000	91.00	36	1.402	909.47	908.20													
56	1224+81.00, 44.0' R	SW-404	918.09			56																					
	</																										

WATER MAIN RELOCATION DUE TO UTILITY CONFLICT					SA-5
LOCATION STATION AND OFFSET	SIZE (in.)	UTILITY OWNER	EX. TOP OF PIPE ELEV. ¹	PROPOSED STORM SEWER FLOWLINE	RELOCATE DEPTH ²
2242+09.00, 60.46' RT	8	THORPE WATER DEVELOPMENT CO.	930.10	930.90	-2.0'
2251+01.01, 20.48' RT	8	THORPE WATER DEVELOPMENT CO.	954.20	953.50	-2.5'

- NOTES:
1. CONTRACTOR TO FIELD VERIFY
 2. APPROXIMATE DEPTH. FIELD ADJUST AS NECESSARY TO MAINTAIN MIN. CLEARANCE.

WATER MAIN RELOCATION CONSTRUCTION NOTES

1. RELOCATE WATER MAIN LOWER AT NOTED CONFLICTS TO MAINTAIN 18" MIN. CLEARANCE UNDER STORM SEWER. SEE DETAIL1, THIS SHEET.
2. COORDINATE SERVICE DISRUPTIONS, CONNECTIONS AND REMOVALS WITH WATER UTILITY OWNER PRIOR TO CONSTRUCTION. PROVIDE MINIMUM 72 HOURS NOTICE PRIOR TO BEGINNING RELOCATION WORK.
3. INSTALL ALL RELOCATED WATER MAIN IN ACCORDANCE WITH THE SPECIFICATIONS AND STANDARDS FOR WATER MAIN ON THIS PROJECT UNLESS NOTED OTHERWISE.
3. MAINTAIN CONTINUITY OF TRACER WIRE FOR ALL RELOCATED WATER MAIN. PROVIDE NEW WIRE AND SPLICING AS NECESSARY.
4. COORDINATE AND SCHEDULE FLUSHING PROCEDURE WITH WATER UTILITY OWNER 72 HOURS PRIOR TO FLUSHING WATER MAIN. PROVIDE CHLORINATION AND FLUSHING TAPS AS REQUIRED.
5. INSTALL STORM SEWER CROSSING ABOVE WATER MAIN WITH GASKETED JOINTS.
6. INSTALL SPECIAL STRUCTURAL SUPPORT FOR STORM SEWER CROSSING ABOVE WATER MAIN PER SUDAS STANDARD SPECIFICATION FIGURE 3010.901.



PROJECT NAME:
**PAVEMENT GRADE AND REPLACE
100th STREET**

SCALE:
NTS

DATE:
12/04/15


SNYDER & ASSOCIATES, INC.

SHEET REFERENCE:
U.3

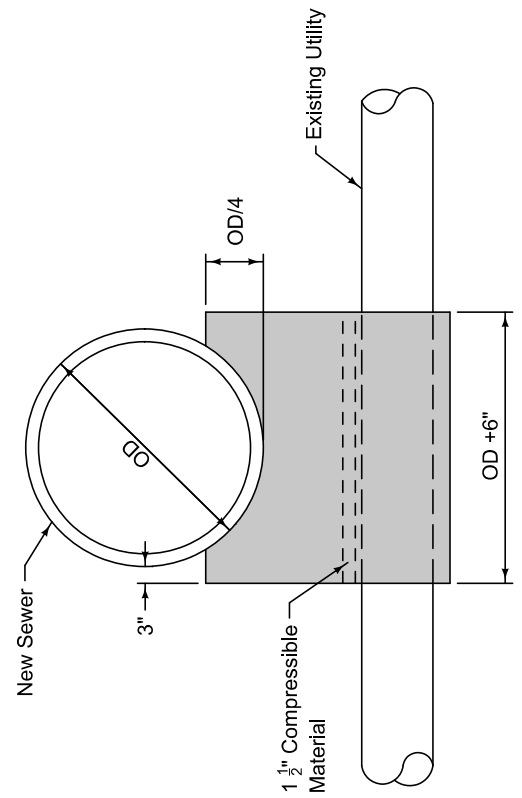
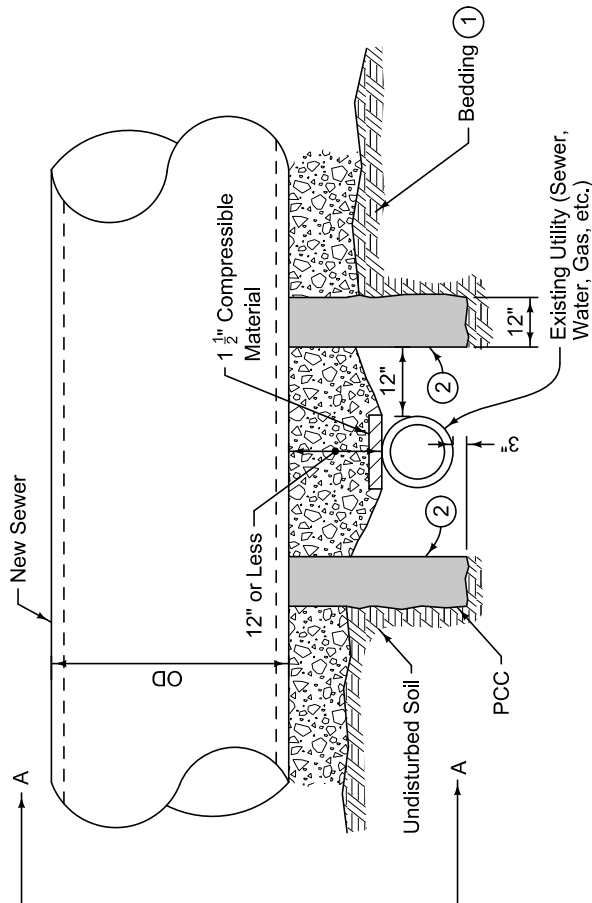
ADDENDUM #:
ADD#2

PROJECT #:
STP-U-7875(638)--70-77

Install pipe support for all new sewers 12 inches in diameter or larger when clearance between bottom of new sewer and top of existing line is 12 inches or less.

- ① Comply with Figure 3010.101.
- ② Form interior surface of footings. Keep the 12 inch utility clear zone free of concrete.

OD = Outside pipe diameter



SECTION A-A

	REVISION	
	1	10-21-14
	3010.901	
	SHEET 1 of 1	

SUDAS Standard Specifications

SEWER PIPE SUPPORT
OVER EXISTING UTILITY LINE