

# A d d e n d u m

Iowa Department of Transportation  
Office of Contracts

Date of Letting: October 20, 2015  
Date of Addendum: October 6, 2015

<b>B.O.</b>	<b>Proposal ID</b>	<b>Proposal Work Type</b>	<b>County</b>	<b>Project Number</b>	<b>Addendum</b>
005	42-C042-077-A	BRIDGE AND APPROACHES - CCS	HARDIN	BRS-C042(77)--60-42	20OCT005.A01

Make the following changes to the Plans:

Add the following to "INDEX OF SHEETS" on plan sheet 1:

- 19. - 20. BA-201 (REV. 10-19-10)
- 21. - 23. BA-202 (REV. 10-21-14)
- 24. BA-250 (REV. 10-21-14)

Replace plan sheet 13 with the attached.

Note revised "STEEL BEAM GUARDRAIL AT CONCRETE BARRIER OR BRIDGE RAIL  
END SECTION" tabulation 108-8A.

On plan sheet 14 remove Standard Road Plans BA-201 (Rev. 10-20-15), BA-202 (Rev. 10-20-15) and BA-250 (Rev. 10-20-15) from "STANDARD ROAD PLANS" tabulation 105-4.

Insert plans with the attached sheets 19 - 24.



At Bridge End Drains, cut Scour Protection (Scourstop and TRM) or remove rock as required to place post(s) such that Bridge End Drains about post(s).

- ① Guardrail mounting height at barrier connection is 32 inches. Transition guardrail mounting height down to 31 inches over the length of the Barrier Transition Section.
- ② Possible curb. See project plans.
- ③ Depending on end anchor type, BTS Post #13 may be eliminated or modified. See BA-202.



Possible Contract Item:  
Steel Beam Guardrail Barrier Transition Section

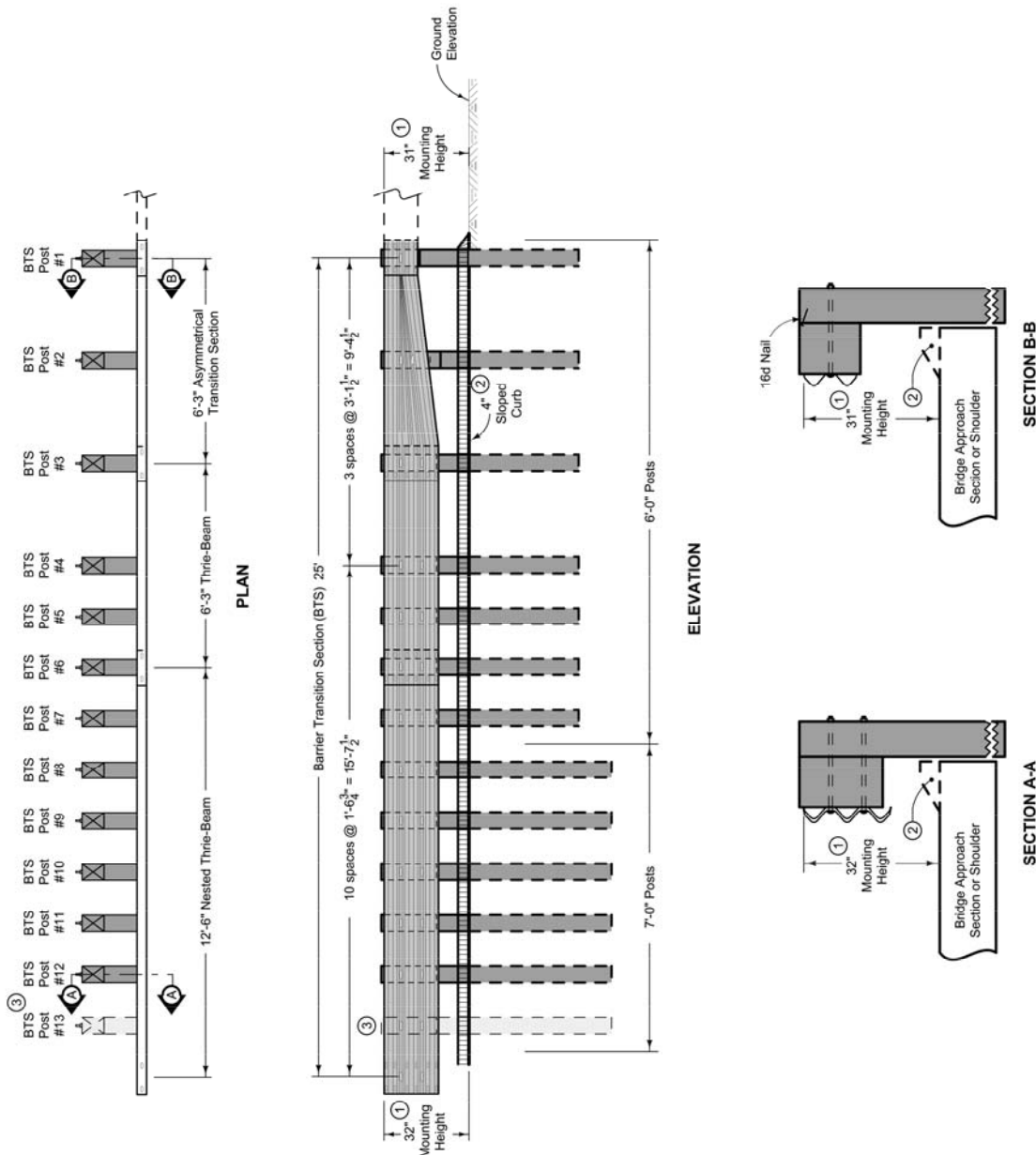
Materials included in the Contract Item:

- (7) 6" x 8" x 6'-0" posts
- (6) 6" x 8" x 7'-0" posts
- (12) 6" x 12" x 19" blockouts
- (1) 6" x 12" x 14" blockout
- (1) Asymmetrical Transition Section
- (2) 12'-6" Thrie-Beam rail sections\*
- (1) 6'-3" Thrie-Beam rail section\*
- Approved bolts, nuts, and washers

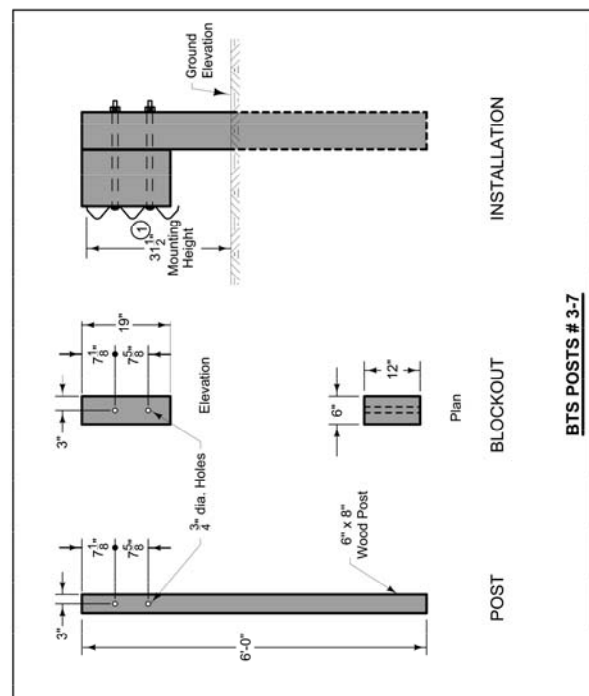
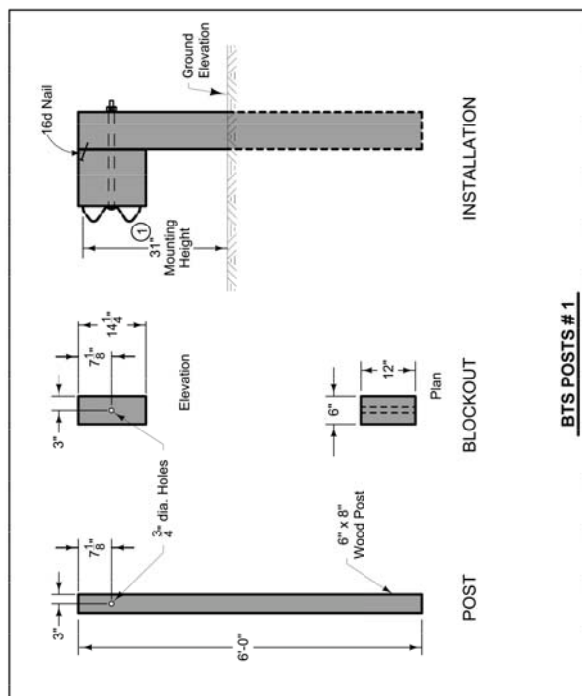
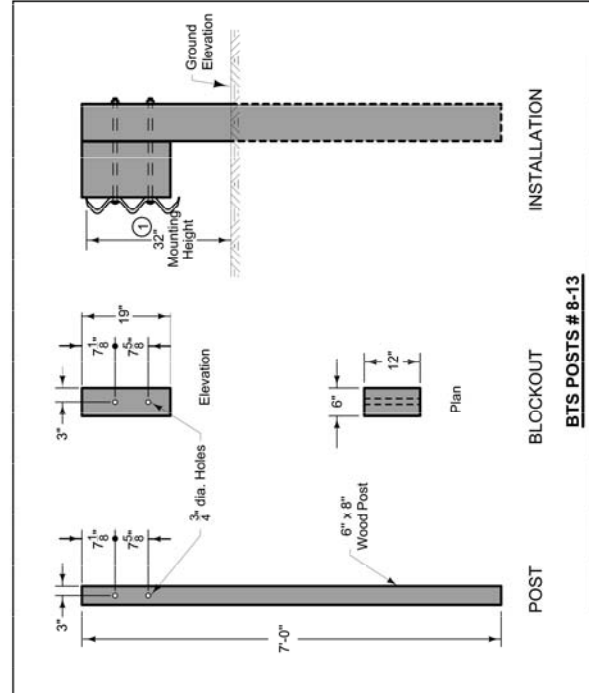
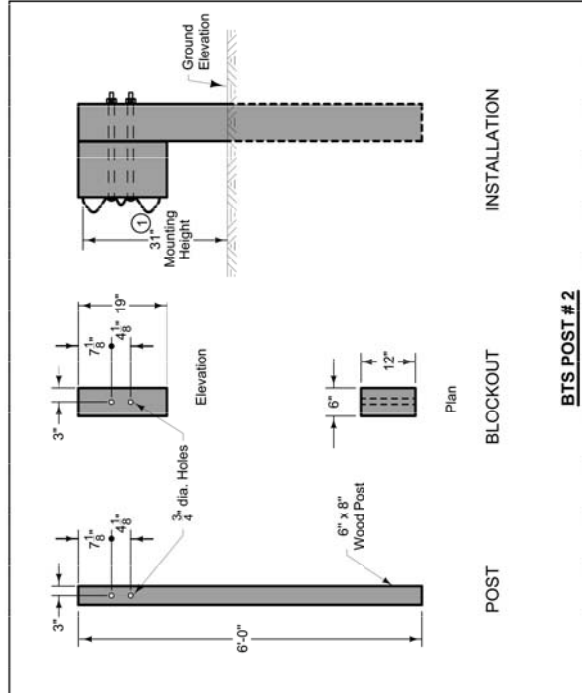
Refer to BA-200 for guardrail components

\* One 13'-9" Thrie-Beam rail section may be substituted for one of the 12'-6" sections and the 6'-3" section as shown

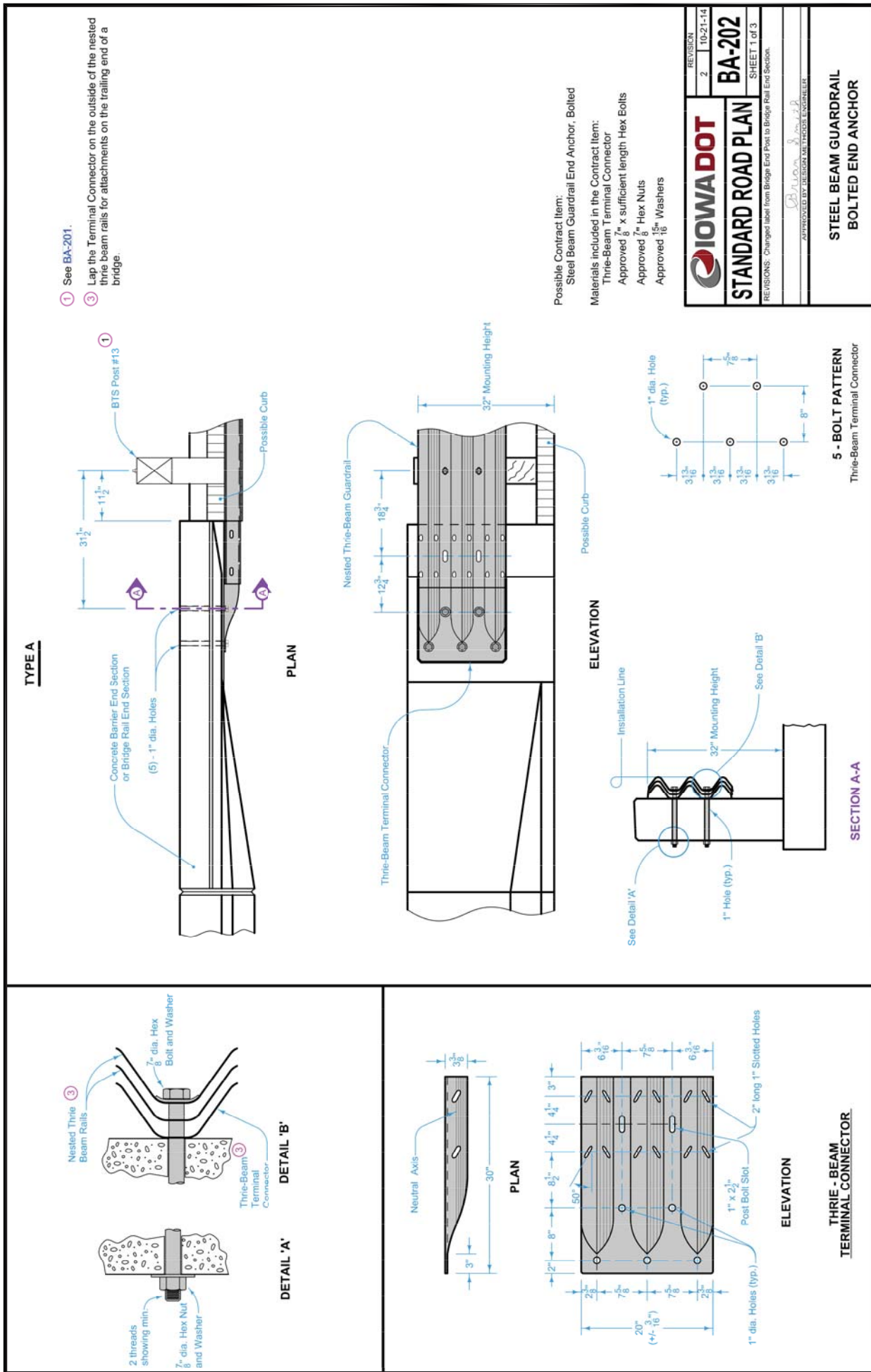
	REVISION	1	10-19-10
	BA-201		
STANDARD ROAD PLAN			
REVISIONS: Removed dimensions from Section A-A and Section B-B on Sheet 1. Clarified related section options.			
SHEET 1 of 2			
			
PROJECT NO. BRS-C042(77)---60-42 HARDIN COUNTY STEEL BEAM GUARDRAIL BARRIER TRANSITION SECTION			



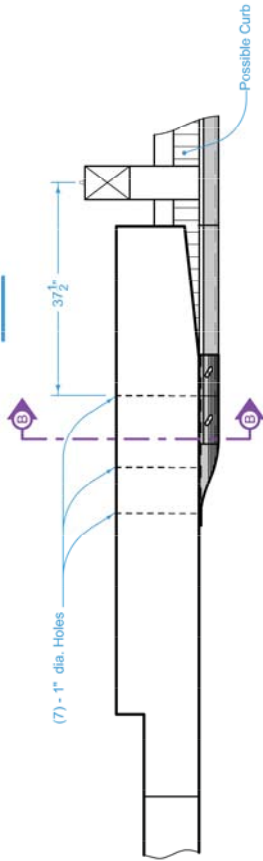
- ① Guardrail mounting height at barrier connection is 32 inches. Transition guardrail mounting height down to 31 inches over the length of the Barrier Transition Section.



 Iowa Department of Transportation	REVISION	1	10-19-10
	<b>BA-201</b>		
	SHEET 2 of 2		
	REVISIONS: Removed dimensions from Section A-A and Section B-B on Sheet 1. Clarified nested section options.		
APPROVED BY REGIONAL DESIGN ENGINEER <i>Deanna Murphy</i>			
<b>STEEL BEAM GUARDRAIL BARRIER TRANSITION SECTION</b>			

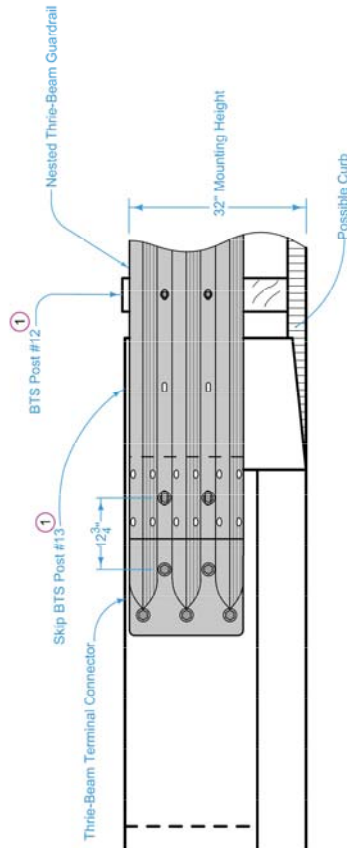


# TYPE B

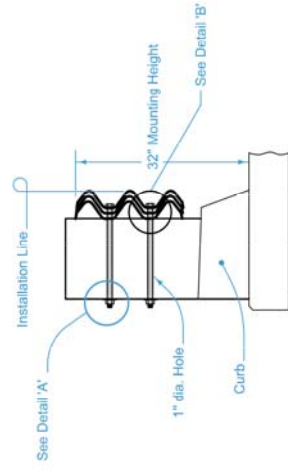


① See BA-201.

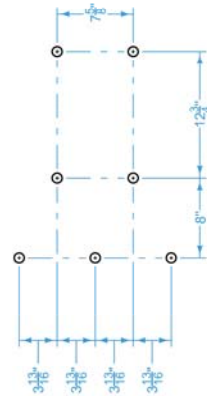
## PLAN



## ELEVATION





## SECTION B-B



## 7 - BOLT PATTERN

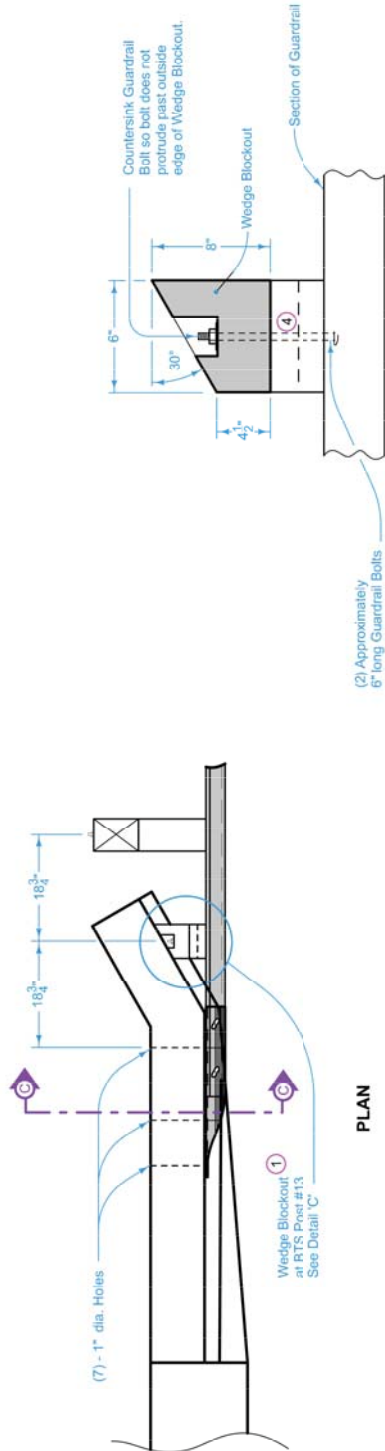
Thrie - Beam Terminal Connector

	REVISION	2	10-21-14
	BA-202		
STANDARD ROAD PLAN		SHEET 2 of 3	
REVISIONS: Changed label from Bridge End Post to Bridge Rail End Section.			
APPROVED BY DESIGN METHOD ENGINEER 			
STEEL BEAM GUARDRAIL BOLTED END ANCHOR			

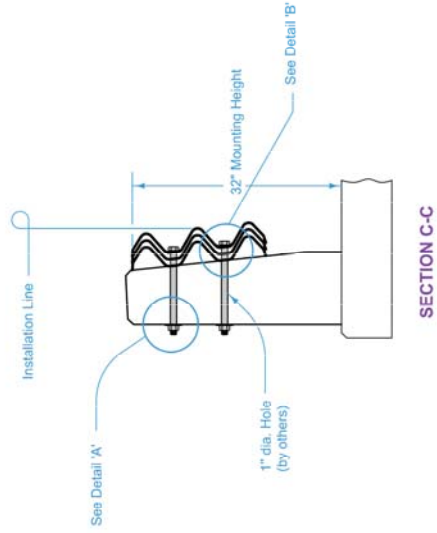
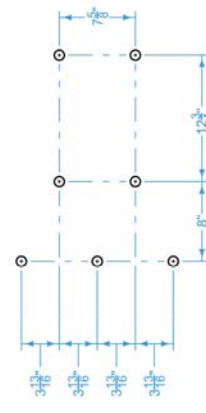
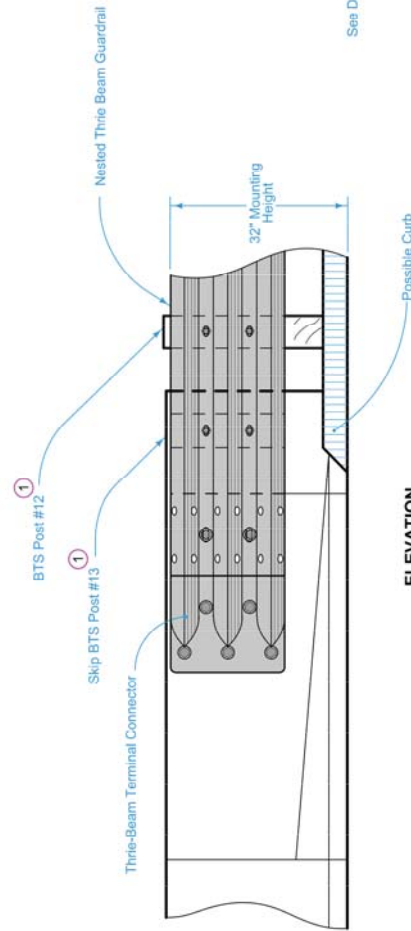



# TYPE C

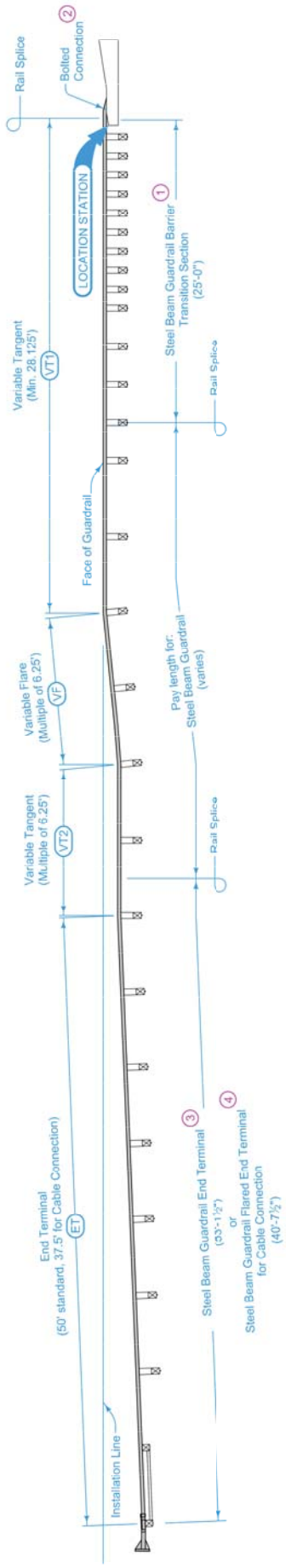
- ① See BA-201.
- ④ Use treated spacer boards (1 in. x 6 in. or 2 in. x 6 in.) to produce a tight fit between the wedge blockout and endpost. A nominal 1 inch gap is acceptable. Spacer boards are incidental to bolted end anchor.



## DETAIL 'C'



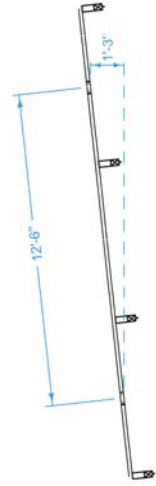
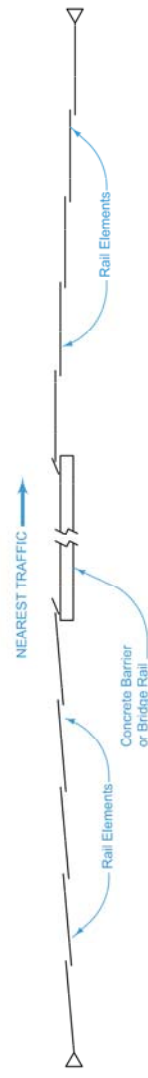
	REVISION	
	2	10-21-14
BA-202		
SHEET 3 of 3		
REVISIONS: Changed label from Bridge End Post to Bridge Rail End Section.		
APPROVED BY DESIGN METHOD ENGINEER		
STEEL BEAM GUARDRAIL BOLTED END ANCHOR		



Install delineators and object markers according to SI-211.  
 For grading requirements, see EW-301.  
 For general guardrail details, see BA-200.

- ① See BA-201.
- ② See BA-202 for connections to concrete barriers and bridge rail end sections.
- ③ See BA-205.
- ④ See BA-206.

### LAPPING PROCEDURE



VARIABLE FLARE

Possible Contract Items:  
 Steel Beam Guardrail  
 Steel Beam Guardrail Barrier Transition Section  
 Steel Beam Guardrail End Anchor, Bolted  
 Steel Beam Guardrail End Terminal

Possible Tabulation:  
 108-8A

	REVISION	3	10-21-14
	<b>BA-250</b>		
<b>STANDARD ROAD PLAN</b>		SHEET 1 of 1	
REVISIONS: Modified note 2 and changed title.			
APPROVED BY DESIGN METHOD ENGINEER 			
<b>STEEL BEAM GUARDRAIL          INSTALLATION AT CONCRETE BARRIER          OR BRIDGE RAIL END SECTION</b>			