

A d d e n d u m

Iowa Department of Transportation
Office of Contracts

Date of Letting: June 16, 2015
Date of Addendum: June 3, 2015

B.O.	Proposal ID	Proposal Work Type	County	Project Number	Addendum
108	71-5927-601	PCC PAVEMENT - REPLACE	OBRIEN	STP-U-5927(601)--70-71	16JUN108.A01

Make the following changes to the PROPOSAL SCHEDULE OF PRICES:

Change Proposal Line No. 0040:
From: 2111-8174100 GRANULAR SUBBASE
To: 2115-0100000 MODIFIED SUBBASE
From: 12,980.000 SY
To: 2,165.000 CY

If the above changes are not made, they will be made as shown here.

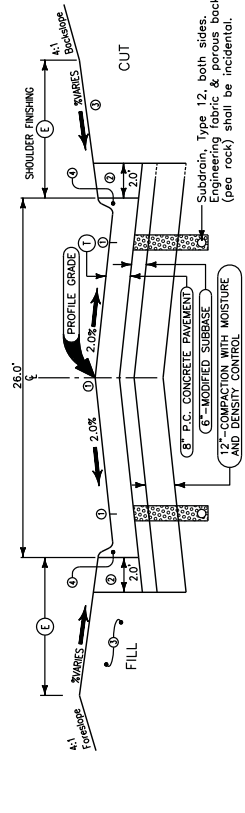
Make the following changes to the plans:

Replace plan sheets B.01 and C.01 with the attached.

2709-X
MORF

- PLAN NOTATION:**
 CSP = CORRUGATED STEEL PIPE
 RCP = REINFORCED CONCRETE PIPE
 PE = POLYETHYLENE
 PE = POLYETHYLENE
 RE = RIM ELEVATION
 ST = STORM SEWER INTAKE
 DMH = DRAINAGE MANHOLE
 SMH = SANITARY SEWER MANHOLE
 GT = GUTTER ELEVATION
 BVC = BEGIN VERTICAL CURVE STATION
 EVC = END VERTICAL CURVE STATION
 SA = SANITARY SEWER LINE
 ST = STORM SEWER LINE
 UG = UNDERGROUND ELECTRICAL LINE
 T = TELEPHONE LINE
 HMA = HOT MIX ASPHALT
 YCP = VIRIFIED CLAY PIPE
 TYP = TYPE
 F&I = FURNISH AND INSTALL

EXISTING	PROPOSED	DESCRIPTION
	—	LOT LINE
	—	EASEMENT LINE
	—	CENTER LINE
	—	TELEPHONE BOX, CABLE TV LINE
	—	SANITARY SEWER, MANHOLE
	—	SANITARY SEWER FORCE MAIN
	—	STORM SEWER, MANHOLE, INTAKE
	—	SUBDRAIN
	—	CURB & GUTTER
	—	PCC PAVEMENT
	—	WATER MAIN, HYDRANT, VALVE
	—	UNDERGROUND ELECTRIC LINE, BOX, LIGHT POLE
	—	POWER POLE, GUY WIRE
	—	OVERHEAD ELECTRIC LINE
	—	GAS LINE, VALVE
	—	TELEPHONE LINE
	—	EVERGREEN, BUSH, TREE
	—	SIGN POST, MAILBOX
	—	FIBER OPTIC LINE
	—	CONTOURS
	—	PAVEMENT REMOVALS
	—	DRAINAGE ARROW



- ① LONGITUDINAL JOINTS: ROAD PLAN P9-101 FOR REFER TO STANDARD PLAN P9-101 FOR BACK OF CURB (BOTH SIDES) & CENTERLINE TRANSVERSE JOINTS: TYPE 'C' CONTRACTION AT 10' SPACING. DOWEL BASKETS ARE NOT REQUIRED.
 ② EXCAVATE AND BACKFILL 2.0"
 ③ FILL, GRADING & SHOULDER FINISHING, WIDTH & SLOPE (1%–4%) VARIES.
 ④ 6" INTEGRAL CURB – STANDARD. DROP CURB LOCATIONS NOTED ON PLANS.

TYPICAL CROSS SECTION
 2 LANE ROADWAY WITH INTEGRAL CURB SECTION

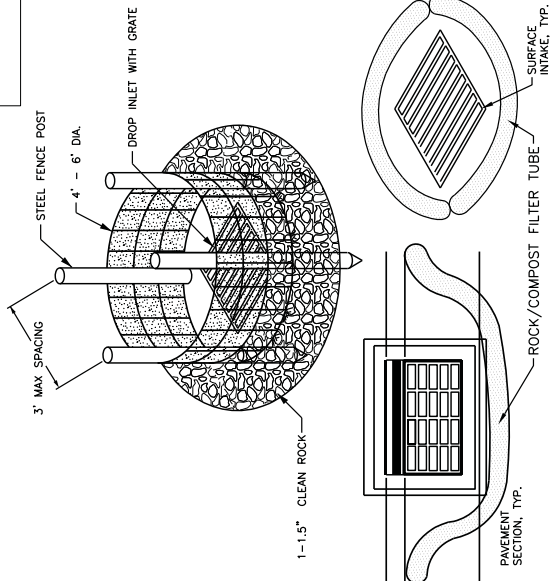
ROAD IDENTIFICATION	STATION TO STATION	TYPE	THICKNESS
MAPLE STREET	1+00.0	8	4.0

Note:
 Normal section shown may be modified as needed. Details are specifically designated by the engineer, such as intersections or super-elevated curves. Refer to other drawings for details of shoulder design and construction.

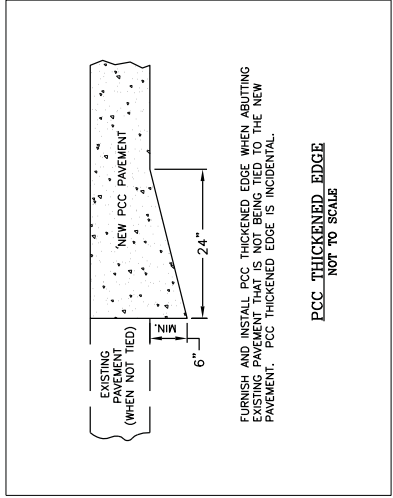
BENCHMARKS & CONTROL POINTS

POINT NO. 10	N 362806.708
	E 4337010.865
	ELEV. = 1381.92
POINT NO. 12	N 362591.032
	E 4336972.529
	ELEV. = 1402.29
POINT NO. 14	N 3626984.677
	E 4337030.495
	ELEV. = 1415.06
POINT NO. 16	N 362655.285
	E 4336957.692
	ELEV. = 1400.667
POINT NO. 18	N 362458.854
	E 4336983.146
	ELEV. = 1405.977

CONTROL POINTS ARE 1/2" REBAR, U.S. STATE PLANE COORDINATES, IOWA NORTH ZONE, NAD 1983 (2011) EPOCH 2010.00, U.S. SURVEY FOOT.



TYPE FF (MONO-MONO FABRIC/SILT FENCE), SEWN INTO A SOCK AND FILLED WITH 1.5" CLEAN ROCK OR COMPOST. FILTER TUBE SHALL BE SILT FENCE SEWN INTO A SOCK AND FILLED WITH 1.5" CLEAN ROCK OR COMPOST. FURNISH AND INSTALL 6"-8" FILTER TUBE ACROSS GUTTERS DOWN GRADE OF EXCAVATION. CLEAN AND MAINTAIN UNTIL PAVING IN THE DRAINAGE AREA IS COMPLETE AND PERMANENT VEGETATIVE COVER IS ESTABLISHED. COST OF FURNISHING, INSTALLING, MOVING AND MAINTAINING THE INLET PROTECTION AND FILTER TUBES SHALL BE INCIDENTAL. THE INLET PROTECTION SHALL BE REMOVED WITHIN A WEEK AFTER PERMANENT STABILIZATION IS COMPLETED.



FURNISH AND INSTALL PCC THICKENED EDGE WHEN ABUTTING EXISTING PAVEMENT THAT IS NOT BEING TIED TO THE NEW PAVEMENT. PCC THICKENED EDGE IS INCIDENTAL.

REV	DATE	DESCRIPTION

Project Manager: Gary T. Kurth, P.E.
 Designer: GTK
 Project Number: 364064
 Phone: (712) 472-2531



MAPLE STREET PAVING
 IMPROVEMENTS
 PAULLINA, IOWA

TYPICAL CROSS SECTIONS AND DETAILS
 STP-U-5927(601)--70-71

S
H
E
E
T

B.01

ESTIMATED PROJECT QUANTITIES

ITEM NO.	ITEM CODE	ITEM	UNIT	TOTAL	AS BUILT QTY.
1.	2102-2713070	EXCAVATION, CLASS 13, ROADWAY AND BORROW	CY	3500	
2.	2105-8425005	TOPSOIL, FURNISH & SPREAD	CY	250	
3.	2107-0875000	COMPACT TOPSOIL, MOISTURE AND DENSITY CONTROL	CY	4327	
4.	2123-0120020	SHOULDER FURNISHING, EARTH	STA	1168	
5.	2123-0120020	SHOULDER OR SLIP FORM PORTLAND CEMENT CONCRETE PAVEMENT, CLASS C, CLASS 3, DURABILITY, 8 IN.	SY	11389	
6.	2301-1033080	PORTLAND CEMENT CONCRETE PAVEMENT SAMPLES, CLASS C, CLASS 3, DURABILITY, 8 IN.	LS	1	
7.	2301-6911722	SUBGRADE, DRIVEWAY, CLASS A, CRUSHED STONE	TON	67	
8.	2315-8275025	MANHOLE, STORM SEWER, SW-40.1, 48 IN.	EACH	1	
9.	2435-0250100	INTAKE, SW-501	EACH	9	
10.	2435-0250110	INTAKE, SW-501 MODIFIED	EACH	5	
11.	2435-0250110	MANHOLE ADJUSTMENT, MINOR	EACH	10	
12.	2435-0600010	MANHOLE ADJUSTMENT, MAJOR	EACH	1	
13.	2435-0600020	SUBDRAIN, PERFORATED PLASTIC PIPE, 4 IN. DIA.	LF	3517	
14.	2502-8212206	SUBDRAIN, PERFORATED PLASTIC PIPE, 6 IN. DIA.	LF	3512	
15.	2502-8212206	SUBDRAIN, PERFORATED PLASTIC PIPE, 6 IN. DIA.	LF	3512	
16.	2502-8221203	SUBDRAIN OUTLET, DR-303	EACH	13	
17.	2503-0114212	STORM SEWER GRAVITY MAIN, TRENCHED, REINFORCED CONCRETE PIPE (RCP), 2000 (CLASS III), 12 IN.	LF	30	
18.	2503-0114215	STORM SEWER GRAVITY MAIN, TRENCHED, REINFORCED CONCRETE PIPE (RCP), 2000 (CLASS III), 15 IN.	LF	167	
19.	2503-0114218	STORM SEWER GRAVITY MAIN, TRENCHED, REINFORCED CONCRETE PIPE (RCP), 2000 (CLASS III), 18 IN.	LF	38	
20.	2503-0114224	STORM SEWER GRAVITY MAIN, TRENCHED, REINFORCED CONCRETE PIPE (RCP), 2000 (CLASS III), 24 IN.	LF	25	
21.	2503-0116218	STORM SEWER GRAVITY MAIN, TRENCHED, REINFORCED CONCRETE ARCH PIPE (RCAP), 2000 (CLASS A-III), 18 IN. X 11 IN.	LF	31	
22.	2503-0200036	REMOVE STORM SEWER PIPE LESS THAN OR EQUAL TO 36 IN. REMOVAL OF PAVEMENT	SY	11389	
23.	2510-6745900	REMOVAL OF INTAKES AND UTILITY ACCESSSES	EACH	10	
24.	2510-6745900	REMOVAL OF SIDEWALK	SY	249	
25.	2511-7528001	DETECTABLE WARNING	SF	279	
26.	2511-7528006	DETECTABLE WARNING	SF	244	
27.	2511-7528011	DETECTABLE WARNING	SF	952	
28.	2515-2475008	DRIVEWAY, P.C. CONCRETE, 6 IN.	SY	74	
29.	2515-2475008	DRIVEWAY, P.C. CONCRETE, 8 IN.	SY	1016	
30.	2515-2475008	DRIVEWAY, P.C. CONCRETE, 8 IN.	SY	14	
31.	2524-6765010	REMOVE AND REINSTALL SIGN AS PER PLAN	EACH	14	
32.	2524-6765010	REMOVE AND REINSTALL SIGN AS PER PLAN	EACH	1126	
33.	2524-6765010	REMOVE AND REINSTALL SIGN AS PER PLAN	EACH	1126	
34.	2524-6765010	REMOVE AND REINSTALL SIGN AS PER PLAN	EACH	1126	
35.	2533-4980005	MOBILIZATION	LS	1	
36.	2533-4980005	MOBILIZATION	LS	1	
37.	2601-2636044	REMOVE, SALVAGE AND RE-INSTALL MAILBOX	EACH	23	
38.	2601-2636044	REMOVE, SALVAGE AND RE-INSTALL MAILBOX	EACH	0.5	
39.	2602-0003006	PERMETER AND SLOPE SEDIMENT CONTROL DEVICE, 6 IN. DIA.	LF	162	
40.	2602-0003006	PERMETER AND SLOPE SEDIMENT CONTROL DEVICE, 6 IN. DIA.	LF	162	
41.	2602-0010010	MOBILIZATIONS, EMERGENCY EROSION CONTROL	EACH	\$500	
42.	2602-0010020	MOBILIZATIONS, EMERGENCY EROSION CONTROL	EACH	\$1000	

ESTIMATE REFERENCE INFORMATION

ITEM NO.	ITEM CODE	DESCRIPTION
1.	2102-2713070	THE CONTRACTOR SHALL RETAIN ALL EXCAVATED STREET EMBANKMENT MATERIAL UNTIL ALL GRADING AND SUBGRADE PREPARATION IS COMPLETE. THE CONTRACTOR WILL NOT BE COMPENSATED TWICE FOR REMOVING MATERIAL FROM THE SITE THAT IS SUBSEQUENTLY RETURNED TO THE SITE. EXCESS EMBANKMENT WILL BE WASTED OFF SITE. ALL GRADING, SALVAGING TOPSOIL, HAULING, STORAGE, AND INSTALLATION COSTS SHALL BE INCIDENTAL TO CLASS 13 EXCAVATION. TOPSOIL SHALL BE ACQUIRED DURING EXCAVATION (BACK OF CURB, 5' WIDE, 6" THICK) FOR NEW PAVEMENT. KEEP TOPSOIL SEPARATED. SPREAD TOPSOIL OVER DISTURBED AREAS, REMOVE ROCK AND DEBRIS. CLASS 13 EXCAVATION SHALL BE PAID BY PLAN QUANTITY (2,800 C.Y. OF CUT TO BE WASTED AND 700 C.Y. OF TOPSOIL FROM BACK OF CURB).
2.	2105-8425005	CONTRACTOR SHALL FURNISH TOPSOIL FREE OF ROCK AND DEBRIS AS NEEDED AND DIRECTED BY THE ENGINEER FOR REPLACEMENT BACK OF CURB AND OVER DISTURBED AREAS. VOLUME IS MEASURED IN PLACE, NOT TRUCKED VOLUME.
3.	2107-0875000	COMPACT THE TOP 12" OF THE SUBGRADE TO NOT LESS THAN 98% OF STANDARD PROCTOR DENSITY. MOISTURE CONTENT -2% TO +3% OF OPTIMUM. MOISTURE & DENSITY CONTROL SHALL EXTEND TO 2' BEYOND THE BACK OF CURB.
4.	2115-0100000	SHALL BE CRUSHED STONE AS PER GRADATION NO. 14 OF THE AGGREGATE GRADATION TABLE. ARTICLE 4.109.02.
5.	2123-7450020	WIDTH WILL VARY FROM BACK OF CURB UP TO SIDEWALK/RIGHT-OF-WAY OR LESS.
6.	2301-1033080	THICKENED EDGE PAVEMENT AND INTEGRAL IS INCIDENTAL. CONTRACTOR SHALL FURNISH CERTIFIED PLAN INSPECTION. A MINIMUM OF 5 CONCRETE SAMPLES. REFER TO IOWA DOT SPECIFICATION 2316.03 SURFACE CORRECTION TO ADDRESS ANY BUMPS EXCEEDING 1/4 INCH IN 10. THERE WILL BE NO INCENTIVE PAYMENT FOR PAVEMENT SMOOTHNESS.

ESTIMATE REFERENCE INFORMATION

ITEM NO.	ITEM CODE	DESCRIPTION
8.	2315-8275025	CLASS 'A' CRUSHED STONE MEETING THE REQUIREMENTS OF ARTICLE 4120.04 OF THE STANDARD SPECIFICATIONS. 4" NOMINAL THICKNESS. REFER TO STANDARD ROAD PLAN FOR CONSTRUCTION DETAILS.
9.	2435-0140148	REFER TO TYPICAL SECTION AND TABULATION 104-5C FOR LOCATION. REFER TO STANDARD ROAD PLANS FOR CONSTRUCTION DETAILS.
10.	2435-0250100	REFER TO TYPICAL SECTION AND TABULATION 104-5C FOR LOCATION. REFER TO STANDARD ROAD PLANS FOR CONSTRUCTION DETAILS.
11.	2435-0250110	REFER TO TYPICAL SECTION AND TABULATION 104-5C FOR LOCATION. REFER TO STANDARD ROAD PLANS FOR CONSTRUCTION DETAILS.
12.	2435-0600010	REFER TO TYPICAL SECTION AND TABULATION 104-5C FOR LOCATION. REFER TO STANDARD ROAD PLANS FOR CONSTRUCTION DETAILS.
13.	2435-0600020	REFER TO TYPICAL SECTION AND TABULATION 104-5C FOR LOCATION. REFER TO STANDARD ROAD PLANS FOR CONSTRUCTION DETAILS.
14.	2502-8212206	REFER TO TYPICAL SECTION AND TABULATION 104-5C FOR LOCATION. REFER TO STANDARD ROAD PLANS FOR CONSTRUCTION DETAILS.
15.	2502-8212206	REFER TO TYPICAL SECTION AND TABULATION 104-5C FOR LOCATION. REFER TO STANDARD ROAD PLANS FOR CONSTRUCTION DETAILS.
16.	2502-8212206	REFER TO TYPICAL SECTION AND TABULATION 104-5C FOR LOCATION. REFER TO STANDARD ROAD PLANS FOR CONSTRUCTION DETAILS.
17.	2503-0114212	PIPE QUANTITIES ARE MEASURED FROM CENTER OF STRUCTURE TO CENTER OF STRUCTURE. SEE TABULATION 104-5B FOR LOCATION AND DESCRIPTION.
18.	2503-0114215	REFER TO TABULATION 110-14, DISPOSE OF THE REMOVED PIPE OFF SITE AT A LOCATION ARRANGED BY THE CONTRACTOR.
19.	2503-0114218	REFER TO TABULATION 110-14, DISPOSE OF THE REMOVED PIPE OFF SITE AT A LOCATION ARRANGED BY THE CONTRACTOR.
20.	2503-0114218	REFER TO TABULATION 110-14, DISPOSE OF THE REMOVED PIPE OFF SITE AT A LOCATION ARRANGED BY THE CONTRACTOR.
21.	2503-0116218	REFER TO TABULATION 110-14, DISPOSE OF THE REMOVED PIPE OFF SITE AT A LOCATION ARRANGED BY THE CONTRACTOR.
22.	2503-0200036	THE EXISTING PAVEMENT THICKNESS AND COMPOSITION VARIES. MOST OF THE PROJECT CONSISTS OF 2"-4" OF ASPHALT OVERLAY OVER 6"-9" CONCRETE BASE PAVEMENT WITH THE OCCASIONAL FULL DEPTH PATCH. THERE ARE CONCRETE PATCHES THROUGHOUT THE EXISTING STREET. RE-SAW EXISTING PAVEMENT PRIOR TO PAVING TO MATCH IF THE EXISTING EDGE IS DAMAGED. ALL SAW CUTTING FOR IS INCIDENTAL. CONTRACTOR MAY DISPOSE OF PAVEMENT REMOVALS AT THE CITY'S LOT LOCATED SOUTHWEST OF THE WASTEWATER LAGOONS. THE DISPOSAL SITE IS 0.5 MILES EAST ON DAY STREET AND 0.25 MILES SOUTH ALONG THE WASTEWATER LAGOONS.
23.	2510-6745980	DO NOT TABULATION 110-15, VERIFY WITH OWNER IF THEY WANT TO RETAIN THE CASTINGS REMOVED FROM THE REMOVED STRUCTURES. REFER TO TABULATION 110-15, VERIFY WITH OWNER IF THEY WANT TO RETAIN THE REMOVED CASTING. THE CONTRACTOR SHALL DISPOSE OF THEM.
24.	2510-6750600	CAREFULLY REMOVE SIDEWALK IN ORDER TO PREVENT DAMAGE TO EXISTING PANELS THAT IS TO REMAIN. THE REPLACEMENT SIDEWALK PAVEMENT DAMAGED BY THE CONTRACTOR SHALL BE INCIDENTAL.
25.	2511-6745900	REFER TO TABULATION 113-1 FOR LOCATION.
26.	2511-7528004	WARNING PANELS SHALL BE PREFABRICATED AND RED IN COLOR.
27.	2511-7528011	REFER TO TABULATION 102-3 FOR LOCATION. PAVEMENT SHALL BE C-4 MIX.
28.	2515-2475008	CAREFULLY REMOVE DRIVEWAY IN ORDER TO PREVENT DAMAGE TO EXISTING PAVEMENT THAT IS TO REMAIN. THE REPLACEMENT DRIVEWAY PAVEMENT DAMAGED BY THE CONTRACTOR SHALL BE INCIDENTAL.
29.	2515-2475008	REFER TO TABULATION 108-22 FOR LOCATION.
30.	2515-6745600	INCLUDES DETOUR PLAN PREPARATION THAT IS TO BE SUBMITTED TO THE ENGINEER AND DISTRICT 3 PRIOR TO INSTALLING SIGNS. INCLUDES ROAD CLOSURES FOR SIDE STREETS. THE CONTRACTOR SHALL MAINTAIN ACCESS PROPERTIES EAST OF MAPLE STREET AT GROESBECK STREET AND/OR GREEN STREET. SHALL CONSIST OF FURNISHING, PLACING, MAINTAINING, AND REMOVING ALL TRAFFIC CONTROL DEVICES, TRAFFIC CONTROL DEVICES SHALL CONFORM TO THE MANUAL ON UNIFORM TRAFFIC CONTROL DEVICES LATEST EDITION. ALL TRAFFIC CONTROL WILL BE PAID FOR AS A LUMP SUM BID ITEM.
31.	2524-6765010	THE CONTRACTOR IS EXPECTED TO MAINTAIN CONTINUOUS WORKING OPERATIONS. THE CONTRACTOR SHALL COMPLETE THE ENTIRE PROJECT AND ALL STREETS OPEN TO TRAFFIC BY THE CONTRACT DATE. CONTRACTOR WILL BE REQUIRED TO MAINTAIN EQUIPMENT AND MATERIALS WITHIN CITY R.O.W. CONTRACTOR WILL BE RESPONSIBLE FOR AGREEMENTS TO STORE OR MAINTAIN EQUIPMENT ON PRIVATE PROPERTY ADJACENT TO THE PROJECT.
32.	2527-9263109	REFER TO MAILBOX TABULATION FOR LOCATION.
33.	2528-8445110	INCLUDED FOR ALL DISTURBED AREAS IN THE RIGHT-OF-WAY FOLLOWING FINAL CONSTRUCTION GRADING.
34.	2533-4980005	ONLY ONE MOBILIZATION WILL BE PAID FOR EACH STAGE OF WORK DESCRIBED IN THE ECIIP. PAYMENT FOR MOBILIZATION TO CORRECT ITEMS NOT PROPERLY INSTALLED WILL NOT BE APPROVED.
35.	2539-9999005	AN EMERGENCY WILL BE CONSIDERED TO BE A SUDDEN OCCURRENCE OF A SERIOUS AND URGENT NATURE WHICH IS BEYOND NORMAL MAINTENANCE OF EROSION CONTROL ITEMS. EMERGENCY WORK REQUIRES IMMEDIATE MOBILIZATION. FAILURE TO MOBILIZE WITHIN EIGHT HOURS OF A WRITTEN ORDER, WILL RESULT IN A DEDUCTION OF \$1500.00 PER CALENDAR DAY.
36.	2601-2636044	REFER TO TABULATION 100-19 FOR LOCATION OF PERMETER AND SEDIMENT CONTROL. A FILTER DEVICE IS TO BE PLACED IN THE STREET TO ATTENUATE DOWNSTREAM OF THE PROJECT. MAINTAIN DEVICES THROUGHOUT THE PROJECT AND REMOVE AFTER FINAL TABULATION.
37.	2602-0010010	
38.	2602-0010020	
39.	2602-0000306	

MAPLE STREET PAVING IMPROVEMENTS PAULLINA, IOWA

ESTIMATE OF QUANTITIES
STP-U-5927(601)-70-71

Project Manager: Gary T. Kurth, P.E.
Designer: GTK
Project Number: 364064
Phone: (712)472-2531

DGR ENGINEERING

S
H
E
E
T

C.01