

# A d d e n d u m

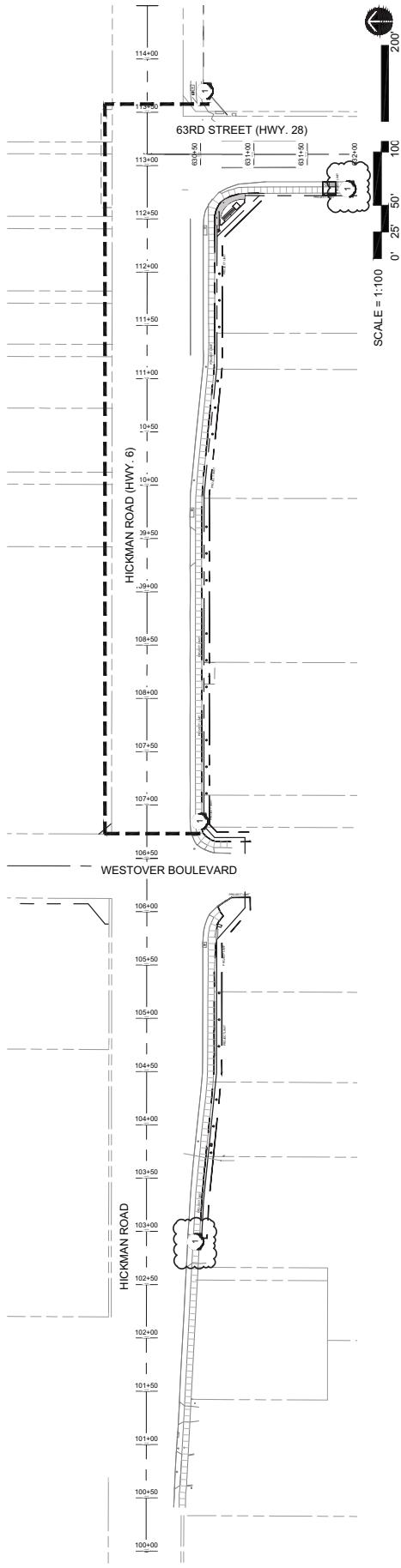
Iowa Department of Transportation  
Office of Contracts

Date of Letting: May 19, 2015  
Date of Addendum: May 14, 2015

<b>B.O.</b>	<b>Proposal ID</b>	<b>Proposal Work Type</b>	<b>County</b>	<b>Project Number</b>	<b>Addendum</b>
451	77-8477-613	Miscellaneous	Polk	TAP-T-8477(613)--8V-77	19may451.a01

Add two additional sidewalk closure signs as indicated on the revised TC.01

Replace PLAN Sheet TC.01 with the attached TC.01:



**01** TRAFFIC CONTROL PLAN

**GENERAL TRAFFIC / PEDESTRIAN CONTROL NOTES:**

1. SIDEWALK CLOSURES MAY BE REQUIRED FOR FIRE HYDRANT RELOCATION AND OR OTHER RELATED CONSTRUCTION ACTIVITIES.
2. PROPOSED SIGN SPACING MAY BE MODIFIED AS APPROVED BY THE CITY OF WINDSOR HEIGHTS TO MEET EXISTING FIELD CONDITIONS OR TO PREVENT OBSTRUCTIONS.
3. PROPOSED CHANGES IN THE TRAFFIC CONTROL / PEDESTRIAN CONTROL PLAN SHALL BE REVIEWED BY THE CITY OF WINDSOR HEIGHTS BEFORE CHANGES ARE MADE.
4. TRAFFIC CONTROL DEVICES, PROCEDURES AND LAYOUTS SHALL BE IN ACCORDANCE WITH THE CURRENT EDITION OF THE MANUAL OF UNIFORM TRAFFIC CONTROL DEVICES AND SHALL BE APPROVED BY THE CITY OF WINDSOR HEIGHTS PRIOR TO PLACEMENT.
5. THE CONTRACTOR SHALL NOTIFY THE CITY OF WINDSOR HEIGHTS ONE WEEK PRIOR TO PLACING TRAFFIC CONTROL SIGNING SO PUBLIC AND BUSINESSES CAN BE MADE AWARE OF UPCOMING CONSTRUCTION.
6. CONTRACTOR SHALL INSTALL SAFETY FENCING AND IMPLEMENT SAFETY MEASURES TO KEEP PERSONNEL OTHER THAN CONSTRUCTION WORKERS OUT OF THE CONSTRUCTION AREA.
7. LOCATION OF TRAFFIC CONTROL DEVICES ARE GENERAL IN NATURE AND NOT EXACT. CONTRACTOR SHALL REVIEW LOCATION AND SPACING TO VERIFY IT MEETS THE MANUAL OF UNIFORM TRAFFIC CONTROL DEVICES STANDARDS. CONTRACTOR TO SUBMIT FINAL TRAFFIC CONTROL / PEDESTRIAN CONTROL PLANS PRIOR TO THE BEGINNING OF CONSTRUCTION FOR CITY WINDSOR HEIGHTS AND LANDSCAPE ARCHITECT TO APPROVE.
8. STAGING PLANS ARE BEST ATTEMPT TO PROVIDE SAFE VEHICULAR AND PEDESTRIAN MOVEMENTS IN AND AROUND THE PROJECT SITE AT ALL TIMES. IT IS RECOMMENDED THAT THE CONTRACTOR THOROUGHLY REVIEW ALL STAGING CONCEPTS, DEVELOP IDEAS THAT MAY IMPROVE THE CONSTRUCTION PROCESS WHILE MAINTAINING SAFETY, AND SUBMIT IDEAS FOR REVIEW.
9. NO LANE CLOSURES ON U.S. HWY. 6 OR IOWA HWY. 28 WILL BE ALLOWED.

**SIGN TYPES:**



**TRAFFIC CONTROL LEGEND:**

