

A d d e n d u m

Iowa Department of Transportation
Office of Contracts

Date of Letting: April 21, 2015
Date of Addendum: April 10, 2015

B.O.	Proposal ID	Proposal Work Type	County	Project Number	Addendum
014	80-C080-064	PILING REPAIR	RINGGOLD	ER-C080(64)--58-80	21APR014.A01

Make the following change to the PLAN:

SHEET 2 OF 7:

Replace Sheet 2 of 7 with the attached Sheet 2 of 7.

SHEET 3 OF 7:

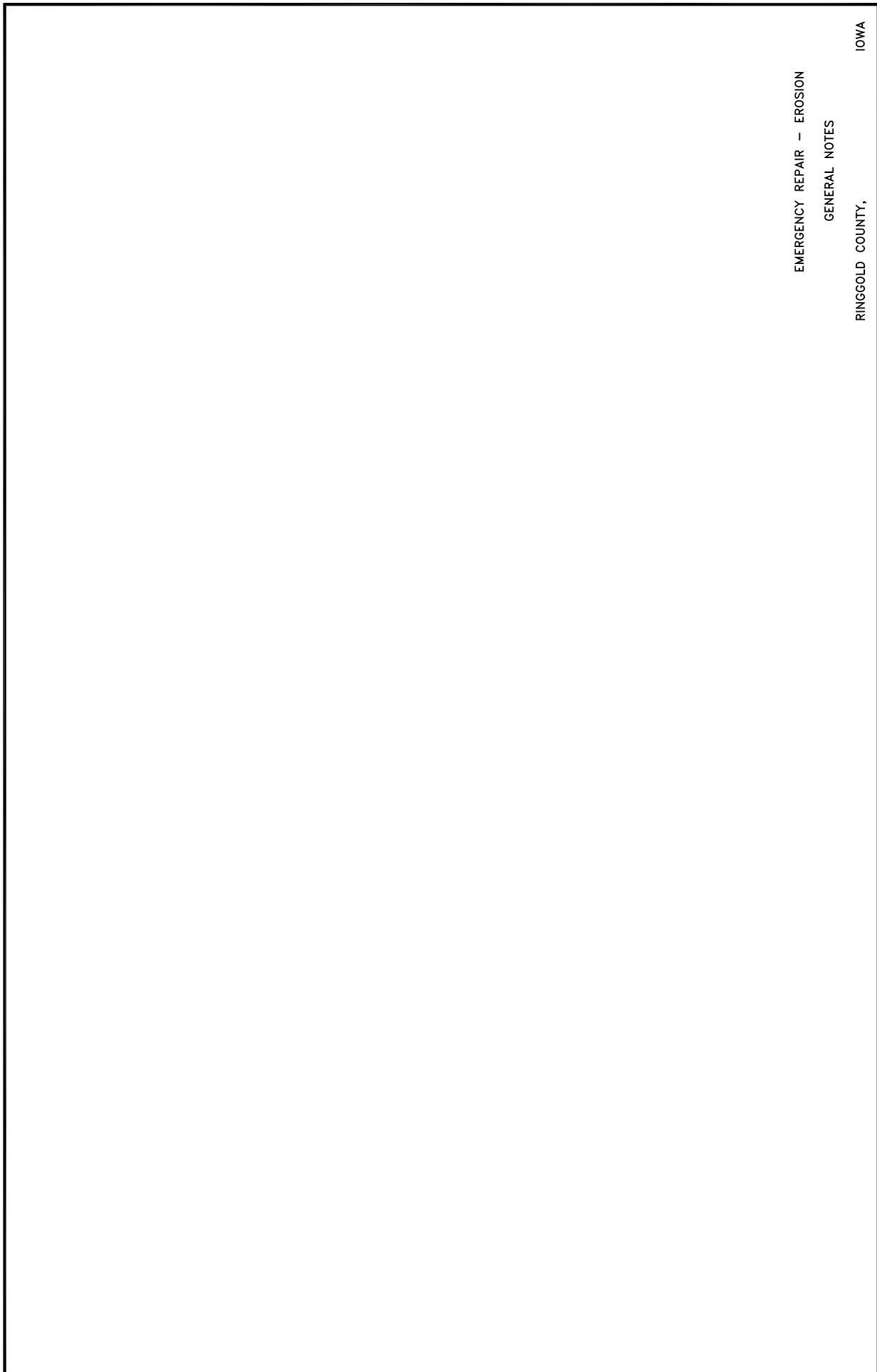
Replace Sheet 3 of 7 with the attached Sheet 3 of 7.

SHEET 5 OF 7:

Replace Sheet 5 of 7 with the attached Sheet 5 of 7.

SHEET 6 OF 7:

Replace Sheet 6 of 7 with the attached Sheet 6 of 7.



EMERGENCY REPAIR - EROSION
GENERAL NOTES
RINGGOLD COUNTY,
IOWA

SHEET 3 OF 7

PROJECT NO. ER-C080(64)--58-80

RINGGOLD COUNTY

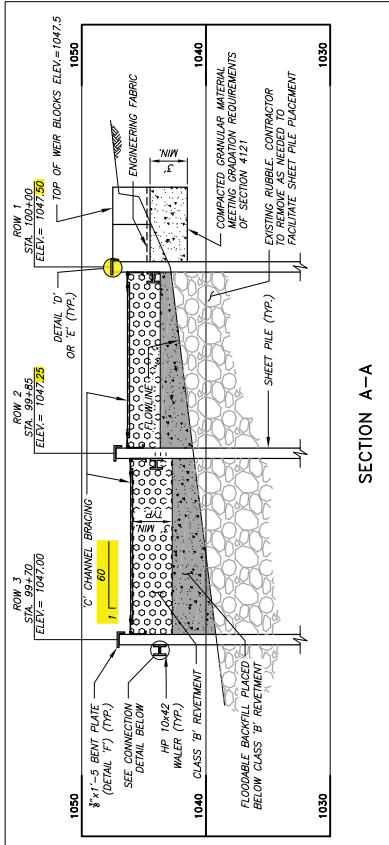
DESIGNED BY : JSC
DRAWN BY : JSC
CHECKED BY : JSC

JOB NO. 2014201

CALHOUN-BURNS & ASSOCIATES, INC. CONSULTING ENGINEERS
WEST DES MOINES, IOWA 50266
(515) 224-4344

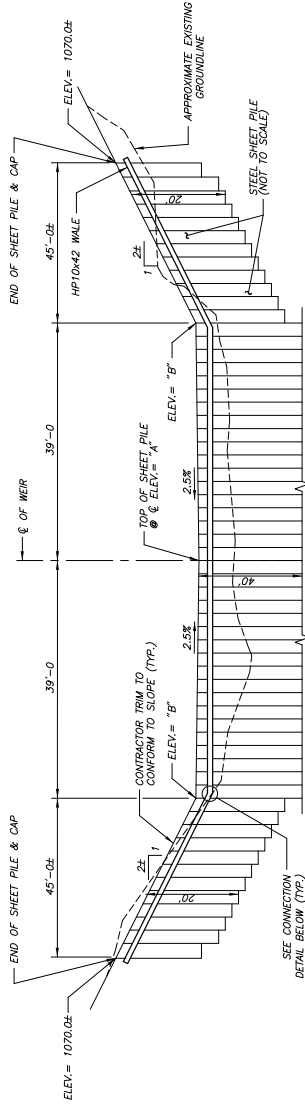


BENCH MARK: 5" IRON PIN N.W. CORNER OF BRIDGE GUARD RAIL N.W. CORNER OF BRIDGE
ELEV.=1067.00 (CONTROL POINT #200)



SECTION A-A

SEE SHEET 6 FOR DETAILS 'D', 'E', & 'F'

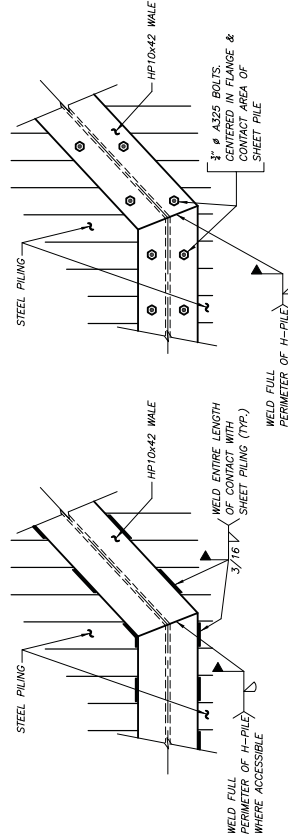


SECTION B-B

ADJUST NUMBER OF SHEET PILE TO MATCH DIMENSIONS SHOWN AS A MINIMUM
NOTE: BENT PLATE NOT SHOWN FOR CLARITY

	ELEV. "A"	ELEV. "B"
ROW 1	1047.50	1048.50
ROW 2	1047.25	1048.25
ROW 3	1047.00	1048.00

- NOTES:
- 1.) SHEET PILE WITHIN CHANNEL SHALL HAVE A MINIMUM TIP ELEVATION OF 1008.5 (OR PILE TO ELEV. = 1028.5 OR LOWER). SHEET PILE SECTIONS SHALL BE PLACED INTERLOCKING. CUT TOP OF SHEET PILE EVEN WITH FINISHED GRADE.
 - 2.) CONTRACTOR SHALL VERIFY ALL DIMENSIONS AND GRADES WITH ENGINEER TO FACILITATE CONSTRUCTION.
 - 3.) PLACE C15x33.9 CHANNEL WALE 1'-0" ± 6" BELOW FINISHED GRADE ON UPSTREAM FACE OF SHEET PILING.



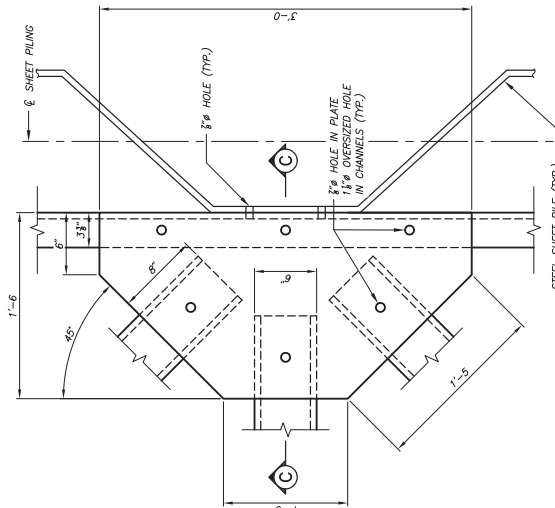
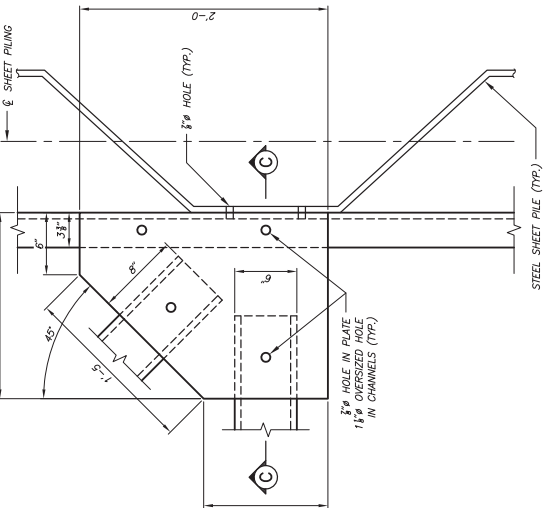
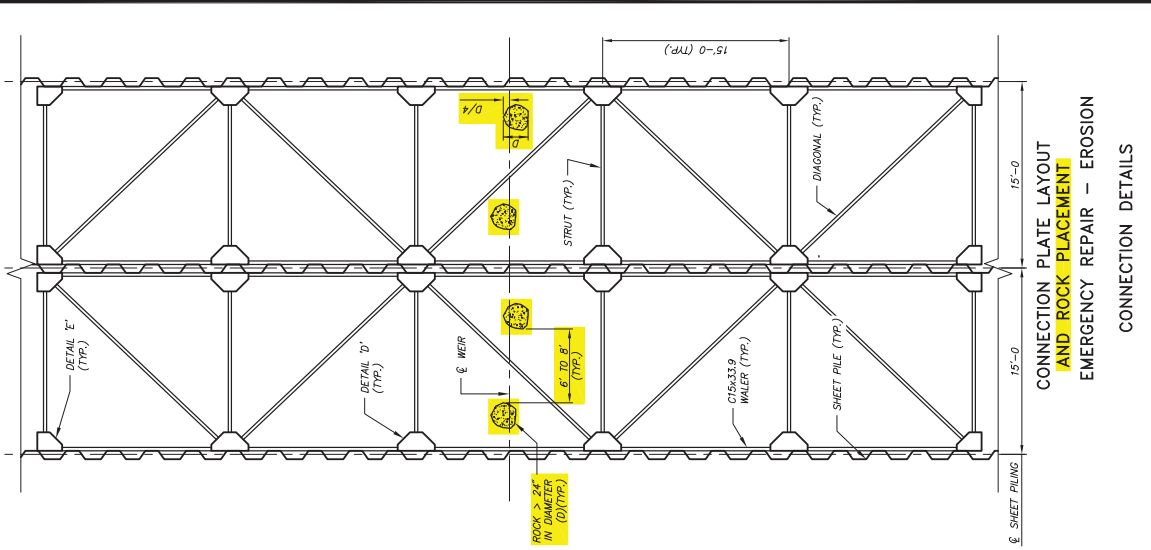
WELDED CONNECTION DETAIL

BOLTED CONNECTION DETAIL

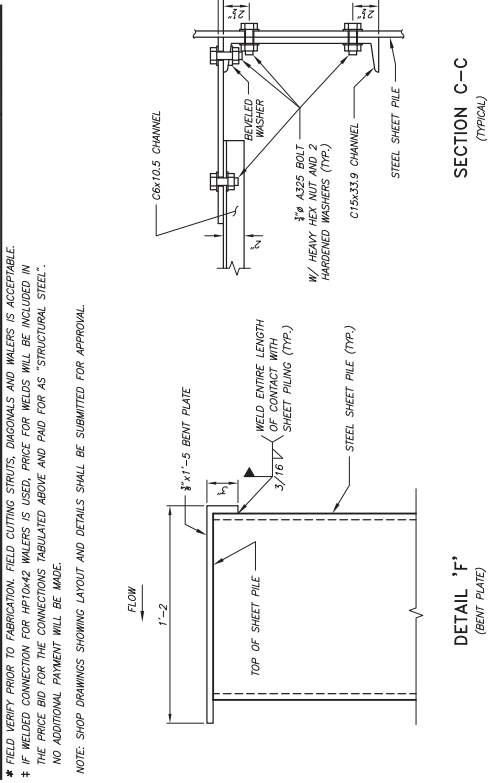
EMERGENCY REPAIR - EROSION WEIR DETAILS

RINGGOLD COUNTY, IOWA

BENCH MARK: 5" IRON PIN N.W. OF BRIDGE GWARD RAIL N.W. CORNER OF BRIDGE
ELEV.=1087.00 (CONTROL POINT #200)



CONTRACT ITEM - STRUCTURAL STEEL			
DETAIL 'D' : INTERIOR PLATE	NO. REQ'D.	TOTAL (NO.)	WEIGHT (LBS.)
5" A36 PLATE WITH 3/8" HOLES = 71.4 LBS.	16	16	1,142
3/8" x 3" HEX BOLT W/ NUT = 0.71 LBS.	6	96	69
1/2" I.D. WASHER = 0.05 LBS.	9	144	7
1/2" I.D. BEVELED WASHER = 0.21 LBS.	3	48	10
DETAIL 'E' : END/CORNER PLATE	NO. REQ'D.	TOTAL (NO.)	WEIGHT (LBS.)
5" A36 PLATE WITH 3/8" HOLES = 51.0 LBS.	8	8	408
3/8" x 3" HEX BOLT W/ NUT = 0.71 LBS.	4	32	23
1/2" I.D. WASHER = 0.05 LBS.	6	48	2
3/8" I.D. BEVELED WASHER = 0.21 LBS.	2	16	4
BRACING STRUTS AND DIAGONALS *	NO. REQ'D.	TOTAL (L.F.)	WEIGHT (LBS.)
C6x10.5 CHANNEL BRACING STRUT = 12'-4" L.F.	12	148	1,554
C6x10.5 CHANNEL BRACING DIAGONAL = 16'-11" L.F.	10	169	1,777
BENT PLATE "CAP" AND WALERS *	NO. OF ROWS	TOTAL (L.F.)	WEIGHT (LBS.)
HP10x42 WALER = 179 L.F.	3	537	22,554
C15x33.9 CONNECTION WALER = 179 L.F.	4	716	24,272
3" A36 BENT PLATE x 1'-5" = 179 L.F.	3	537	11,640
C15x33.9 WALER CONNECTIONS *	NO. ROWS	TOTAL (NO.)	WEIGHT (LBS.)
3/8" x 3" HEX BOLT W/ NUT = 0.71 LBS.	4	600	426
1/2" I.D. WASHER = 0.05 LBS.	4	300	60
HP 10x42 WALER CONNECTIONS (OPTIONAL) †	NO. ROWS	TOTAL (NO.)	WEIGHT (LBS.)
3/8" x 3" HEX BOLT W/ NUT = 0.71 LBS.	3	600	426
1/2" I.D. WASHER = 0.05 LBS.	3	300	60
STRUCTURAL STEEL TOTAL			64,433



IOWA
RINGGOLD COUNTY,
RINGGOLD COUNTY
PROJECT NO. ER-C080(64)-58-80
SHEET 6 OF 7

CALHOUN-BURNS & ASSOCIATES, INC. CONSULTING ENGINEERS
WEST DES MOINES, IOWA 50266
JOB NO. 2014201
DESIGNED BY: [Signature]
CHECKED BY: [Signature]