



Food Assistance Program - State Summary

February, 2015

				% of Change Over
	<u>February, 2015</u>	<u>January, 2015</u>	<u>February, 2014</u>	<u>Last Year</u>
*Households				
FIP Program	12,126	12,282	13,436	-9.7%
Food Assistance Only	77,941	76,168	64,831	20.2%
Other Programs	98,543	99,957	116,144	-15.2%
Total Households	188,610	188,407	194,411	-3.0%
*Recipients				
FIP Program	38,057	38,446	41,826	-9.0%
Food Assistance Only	115,699	110,616	79,057	46.3%
Other Programs	242,745	246,932	289,327	-16.1%
Total Recipients	396,501	395,994	410,210	-3.3%
*Allotments				
FIP Program	\$4,908,281	\$ 4,941,747	\$ 5,352,708	-8.3%
Food Assistance Only	\$14,405,646	\$ 13,709,557	\$ 10,073,574	43.0%
Other Programs	\$24,576,704	\$ 24,878,005	\$ 28,844,574	-14.8%
Total Allotments	\$43,890,631	\$43,529,309	\$44,270,856	-0.9%
*Average Allotment per Household				
FIP Program	\$404.77	\$402.36	\$398.39	1.6%
Food Assistance Only	\$184.83	\$179.99	\$155.38	19.0%
Other Programs	\$249.40	\$248.89	\$248.35	0.4%
Overall Average per Household	\$232.71	\$231.04	\$227.72	2.2%
*Average Allotment per Recipient				
FIP Program	\$128.97	\$128.54	\$127.98	0.8%
Food Assistance Only	\$124.51	\$123.94	\$127.42	-2.3%
Other Programs	\$101.24	\$100.75	\$99.70	1.6%
Overall Average per Recipient	\$110.69	\$109.92	\$107.92	2.6%

State Fiscal Year to Date

			% of Change over
*Allotment	<u>SFY-2015</u>	<u>SFY 2014</u>	<u>Last Year</u>
FIP Program	\$39,905,943	\$47,332,398	-15.69%
Food Assistance Only	\$102,130,655	\$84,050,112	21.51%
Other Programs	\$208,946,919	\$247,834,391	-15.69%
Total Allotment	\$350,983,517	\$379,216,901	-7.45%

*All figures on the F-1 report (cases/individuals/expenditures) reflect only the Food Assistance Program.

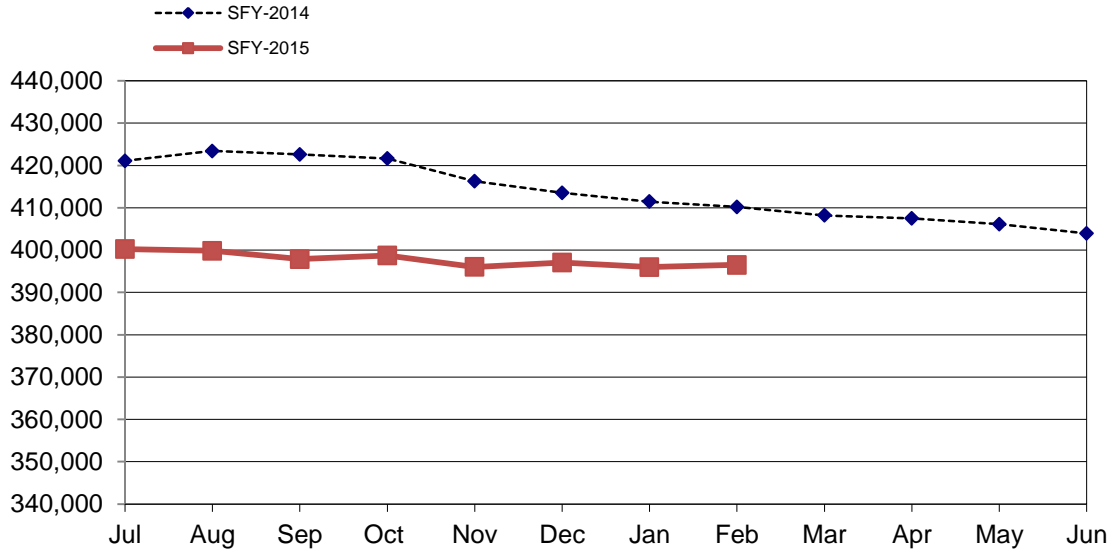
The categories of cases/individuals/expenditures are:

FIP Program (receives food assistance and also receives assistance under the Family Investment Program)

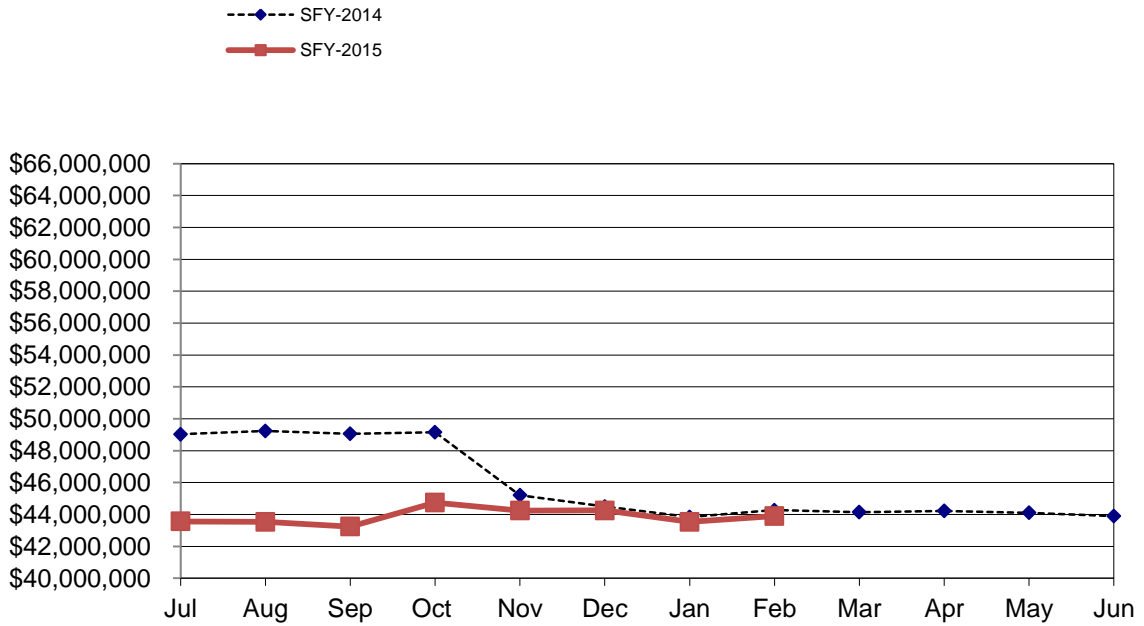
Food Assistance Only (receives food assistance and does not take part in either FIP or the Medicaid program)

Other Programs (receives food assistance and takes part in the Medicaid program)

Total Food Assistance Recipients



Total Food Assistance Spending



Food Assistance Participation by Case Type and County

County	FIP Program			Food Assistance Only			Other Programs			TOTAL			PARTICIPATION RATE *
	Households	Recipients	Allotment	Households	Recipients	Allotment	Households	Recipients	Allotment	Households	Recipients	Allotment	
Area 1 - Western													
Audubon	15	46	4,857	89	165	15,951	139	347	32,179	243	558	52,987	41.6%
Buena Vista	64	201	26,368	313	548	58,963	671	1,989	179,789	1,048	2,738	265,120	55.1%
Carroll	47	149	19,941	329	559	62,243	477	1,190	103,751	853	1,898	185,935	46.8%
Cass	47	148	17,703	332	540	59,825	490	1,231	108,440	869	1,919	185,968	52.8%
Cherokee	24	79	10,640	229	374	40,427	284	700	62,075	537	1,153	113,142	51.0%
Clay	42	143	18,040	357	555	57,653	497	1,152	101,097	896	1,850	176,790	54.3%
Crawford	92	251	33,421	246	455	48,713	507	1,350	126,231	845	2,056	208,365	43.8%
Dickinson	33	98	11,431	251	394	42,764	346	749	66,798	630	1,241	120,993	46.1%
Emmet	33	98	12,887	200	353	36,602	279	710	65,990	512	1,161	115,479	53.2%
Fremont	31	95	12,101	155	269	31,251	257	645	59,132	443	1,009	102,484	65.6%
Greene	44	132	16,764	221	369	44,204	327	881	77,464	592	1,382	138,432	61.9%
Guthrie	15	52	6,447	190	315	33,032	271	724	65,891	476	1,091	105,370	48.2%
Harrison	36	102	12,947	314	531	58,190	430	1,043	101,792	780	1,676	172,929	54.3%
Ida	13	36	4,447	105	170	20,510	172	441	37,898	290	647	62,855	35.5%
Kossuth	29	83	9,384	219	371	40,583	300	739	66,630	548	1,193	116,597	42.0%
Lyon	9	37	3,829	83	155	17,107	167	473	36,643	259	665	57,579	28.3%
Mills	32	103	13,854	242	413	49,099	366	937	93,704	640	1,453	156,657	52.8%
Monona	14	36	4,185	210	371	39,264	286	717	63,559	510	1,124	107,008	49.7%
Montgomery	54	157	19,746	334	522	62,787	457	1,164	109,012	845	1,843	191,545	57.5%
O'Brien	22	75	8,610	191	347	34,874	300	777	72,097	513	1,199	115,581	36.0%
Osceola	11	29	3,683	73	141	15,666	132	308	26,160	216	478	45,509	35.7%
Page	51	171	21,303	416	718	77,483	546	1,318	122,177	1,013	2,207	220,963	53.0%
Palo Alto	25	76	10,341	153	243	27,533	231	583	50,858	409	902	88,732	38.2%
Plymouth	30	93	12,367	269	511	52,790	404	1,080	94,635	703	1,684	159,792	46.7%
Pottawattamie	505	1,612	200,264	3,372	5,099	633,640	4,179	9,861	1,010,193	8,056	16,572	1,844,097	73.1%
Sac	19	64	8,522	153	248	29,500	233	599	50,927	405	911	88,949	41.9%
Shelby	28	91	10,321	193	312	30,702	311	721	67,083	532	1,124	108,106	40.9%
Sioux	42	101	12,782	198	389	38,616	440	1,208	106,695	680	1,698	158,093	30.8%
Taylor	25	85	9,288	111	205	21,624	219	557	48,952	355	847	78,864	48.4%
Woodbury	502	1,553	202,337	3,389	5,563	694,875	4,492	11,807	1,212,146	8,383	18,923	2,109,358	68.1%
Area Total	1,934	5,996	758,810	12,937	21,205	2,476,471	18,210	46,001	4,419,998	33,081	73,202	7,655,279	55.9%
Area 2 - Northern													
Allamakee	57	183	24,180	193	320	32,537	385	1,006	86,163	635	1,509	142,880	40.2%
Black Hawk	886	2,727	342,948	4,385	6,107	764,812	5,164	11,879	1,169,231	10,435	20,713	2,276,991	59.7%
Bremer	41	130	17,118	247	437	43,056	354	865	76,251	642	1,432	136,425	40.7%
Buchanan	52	159	19,920	315	534	59,618	476	1,178	107,033	843	1,871	186,571	44.7%
Butler	29	93	12,079	250	422	51,366	313	830	74,476	592	1,345	137,921	44.4%
Calhoun	16	48	5,393	148	244	25,426	244	633	55,447	408	925	86,266	39.2%
Cerro Gordo	149	468	57,541	1,331	1,958	237,489	1,492	3,344	314,509	2,972	5,770	609,539	52.7%
Chickasaw	20	55	7,224	158	243	27,588	250	617	60,141	428	915	94,953	28.6%
Clayton	19	52	7,415	238	385	39,601	374	931	72,529	631	1,368	119,545	32.4%
Delaware	42	120	15,455	216	365	39,291	353	848	76,818	611	1,333	131,564	41.8%
Fayette	86	283	32,878	450	697	78,902	738	1,726	154,223	1,274	2,706	266,003	56.0%
Floyd	73	233	30,637	367	607	69,578	539	1,383	122,410	979	2,223	222,625	52.9%
Franklin	34	102	12,743	136	244	23,221	296	792	75,408	466	1,138	111,372	44.6%
Grundy	13	40	4,724	112	208	24,077	177	478	41,016	302	726	69,817	40.4%
Hamilton	51	152	21,242	273	448	49,326	408	1,044	102,828	732	1,644	173,396	40.9%
Hancock	14	31	4,006	129	234	25,635	209	546	47,296	352	811	76,937	33.7%
Hardin	55	190	24,084	345	608	64,042	491	1,293	113,665	891	2,091	201,791	53.5%
Howard	28	81	10,741	143	220	25,542	209	522	46,280	380	823	82,563	35.6%
Humboldt	22	66	8,071	165	268	26,239	252	608	55,580	439	942	89,890	39.9%
Marshall	181	576	74,520	1,067	1,639	205,376	1,620	4,359	406,398	2,868	6,574	686,294	61.5%
Mitchell	23	72	8,988	114	192	20,977	169	398	34,693	306	662	64,658	35.3%
Pocahontas	24	59	8,687	136	241	25,913	219	580	51,351	379	880	85,951	49.2%
Webster	253	746	96,444	1,319	1,924	243,560	1,546	3,624	363,255	3,118	6,294	703,259	64.5%
Winnebago	34	108	13,188	188	292	35,544	242	619	60,427	464	1,019	109,159	41.6%
Winneshek	28	80	11,084	224	331	35,122	299	687	58,459	551	1,098	104,665	32.4%
Worth	13	34	4,692	102	175	18,979	167	429	38,387	282	638	62,058	36.2%
Wright	51	144	18,376	231	392	45,338	416	1,068	108,497	698	1,604	172,211	51.9%
Area Total	2,294	7,032	894,378	12,982	19,735	2,338,155	17,402	42,287	3,972,771	32,678	69,054	7,205,304	50.7%

Food Assistance Participation by Case Type and County

County	FIP Program			Food Assistance Only			Other Programs			TOTAL			PARTICIPATION RATE *
	Households	Recipients	Allotment	Households	Recipients	Allotment	Households	Recipients	Allotment	Households	Recipients	Allotment	
Area 3 - Eastern													
Cedar	34	102	12,042	218	369	42,292	361	964	97,592	613	1,435	151,926	44.8%
Clinton	267	854	114,051	1,918	2,662	347,189	2,346	5,331	552,783	4,531	8,847	1,014,023	79.8%
Des Moines	208	628	84,198	1,542	2,258	293,074	2,013	4,926	512,231	3,763	7,812	889,503	70.7%
Dubuque	459	1,435	183,153	2,405	3,416	423,995	2,609	6,390	653,594	5,473	11,241	1,260,742	60.7%
Henry	67	218	28,358	436	685	78,326	743	1,906	182,729	1,246	2,809	289,413	51.7%
Jackson	58	187	22,395	442	655	76,299	625	1,577	156,061	1,125	2,419	254,755	49.0%
Lee	153	492	61,269	1,178	1,765	226,243	1,699	4,082	412,910	3,030	6,339	700,422	66.1%
Louisa	28	88	11,757	180	277	32,725	357	960	90,023	565	1,325	134,505	42.6%
Muscatine	178	546	73,478	1,276	1,879	233,478	1,943	4,957	519,359	3,397	7,382	826,315	65.5%
Scott	1,163	3,600	477,360	6,819	9,595	1,313,004	8,059	19,211	2,172,517	16,041	32,406	3,962,881	90.1%
Area Total	2,615	8,150	1,068,061	16,414	23,561	3,066,625	20,755	50,304	5,349,799	39,784	82,015	9,484,485	71.8%
Area 4 - Cedar Rapids													
Appanoose	51	165	19,017	436	696	79,271	604	1,310	126,501	1,091	2,171	224,789	58.0%
Benton	46	140	18,863	435	747	86,367	555	1,397	134,013	1,036	2,284	239,243	52.9%
Davis	24	83	10,147	128	219	24,418	178	448	39,603	330	750	74,168	26.2%
Iowa	21	61	7,722	209	343	39,572	254	634	60,158	484	1,038	107,452	38.2%
Jasper	178	558	68,063	940	1,522	186,625	1,058	2,602	257,357	2,176	4,682	512,045	59.9%
Jefferson	50	148	17,516	620	869	109,938	603	1,254	122,544	1,273	2,271	249,998	55.7%
Johnson	468	1,564	203,849	2,364	3,502	423,940	2,580	6,098	640,209	5,412	11,164	1,267,998	34.3%
Jones	49	155	19,068	309	549	64,649	431	1,159	113,086	789	1,863	196,803	49.8%
Keokuk	23	76	8,510	211	361	38,246	299	752	72,680	533	1,189	119,436	46.1%
Linn	908	2,914	373,554	6,105	9,018	1,141,758	6,344	14,870	1,518,380	13,357	26,802	3,033,692	70.0%
Mahaska	98	292	37,408	701	1,101	137,107	735	1,825	182,689	1,534	3,218	357,204	55.7%
Monroe	37	120	16,680	159	245	28,806	234	577	55,614	430	942	101,100	51.8%
Poweshiek	41	122	16,319	287	468	52,971	395	905	81,333	723	1,495	150,623	43.4%
Tama	44	127	16,376	345	619	70,663	457	1,248	116,595	846	1,994	203,634	46.8%
Van Buren	19	59	6,609	122	222	24,618	230	557	51,885	371	838	83,112	39.4%
Wapello	269	857	109,815	1,518	2,165	269,180	1,738	3,885	394,180	3,525	6,907	773,175	60.5%
Washington	46	147	16,510	380	669	72,053	549	1,413	137,054	975	2,229	225,617	47.2%
Area Total	2,372	7,588	966,026	15,269	23,315	2,850,182	17,244	40,934	4,103,881	34,885	71,837	7,920,089	52.7%
Area 5 - Des Moines													
Adair	12	34	5,096	150	194	22,181	207	576	53,120	369	804	80,397	53.7%
Adams	12	34	4,728	47	68	7,935	114	306	32,543	173	408	45,206	47.4%
Boone	85	268	34,092	498	705	84,866	642	1,597	163,989	1,225	2,570	282,947	47.0%
Clarke	25	74	8,973	221	339	39,173	373	903	87,982	619	1,316	136,128	55.3%
Dallas	101	333	44,133	638	970	111,066	1,048	2,776	283,258	1,787	4,079	438,457	46.5%
Decatur	37	129	16,580	276	399	48,346	336	842	77,940	649	1,370	142,866	49.2%
Lucas	30	96	12,306	218	314	37,778	359	1,024	97,425	607	1,434	147,509	57.1%
Madison	28	78	10,450	210	323	36,776	328	919	94,391	566	1,320	141,617	41.7%
Marion	81	236	30,889	562	872	108,312	803	2,052	207,002	1,446	3,160	346,203	55.1%
Polk	2,199	7,083	933,406	14,791	19,838	2,698,185	17,487	43,977	4,785,952	34,477	70,898	8,417,543	80.5%
Ringgold	13	40	4,432	104	157	17,589	173	437	39,608	290	634	61,629	46.8%
Story	148	445	56,789	1,472	1,978	257,510	1,446	3,624	384,160	3,066	6,047	698,459	25.4%
Union	56	173	23,580	379	554	63,762	485	1,170	115,586	920	1,897	202,928	49.4%
Warren	70	226	31,143	639	989	118,823	894	2,402	246,083	1,603	3,617	396,049	51.7%
Wayne	14	42	4,409	134	183	21,911	237	614	61,216	385	839	87,536	41.9%
Area Total	2,911	9,291	1,221,006	20,339	27,883	3,674,213	24,932	63,219	6,730,255	48,182	100,393	11,625,474	63.1%
State Total	12,126	38,057	4,908,281	77,941	115,699	14,405,646	98,543	242,745	24,576,704	188,610	396,501	43,890,631	58.6%

* Participation Rate is the percentage of individuals at or below 160%FPL who are receiving Food Assistance in a given area (County/SA/State).
 It is calculated by dividing the number of Food Assistance Recipients in an area (county/SA/State) by the number of persons in that area at or below 160% of the Federal Poverty Level.
 (As counted in the 2006-2010 American Community Survey)