

A d d e n d u m

Iowa Department of Transportation
Office of Contracts

Date of Letting: February 17, 2015
Date of Addendum: February 12, 2015

B.O.	Proposal ID	Proposal Work Type	County	Project Number	Addendum
306	78-0293-102	GRADING	POTTAWATTAMIE	IM-NHS-029-3(102)48--03-78 IM-NHS-029-3(103)48--03-78 IM-NHS-029-3(104)48--03-78 IM-029-3(105)48--13-78 NHS-029-3(106)48--11-78 IM-NHS-029-3(110)48--03-78 IM-NHS-029-3(122)48--03-78 IM-NHS-029-3(146)48--03-78 IM-NHS-080-1(416)3--03-78	17FEB306.A10

Make the following changes to IM-NHS-080-1(416)3--03-78 plans.

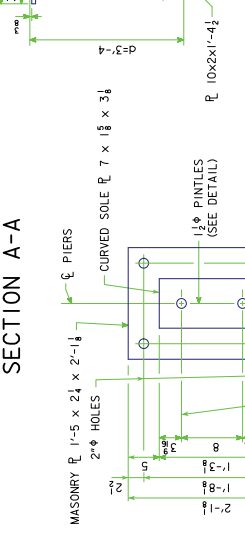
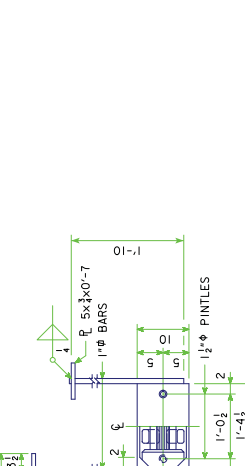
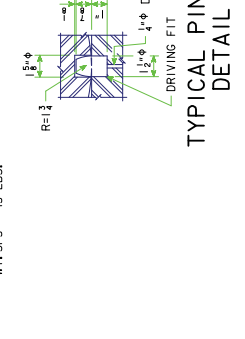
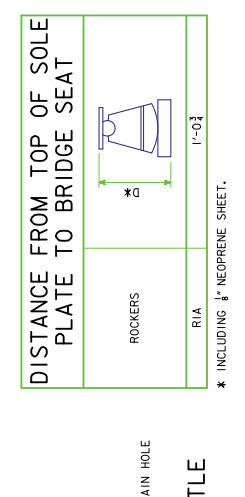
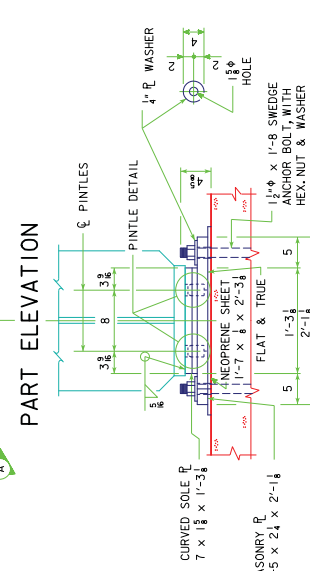
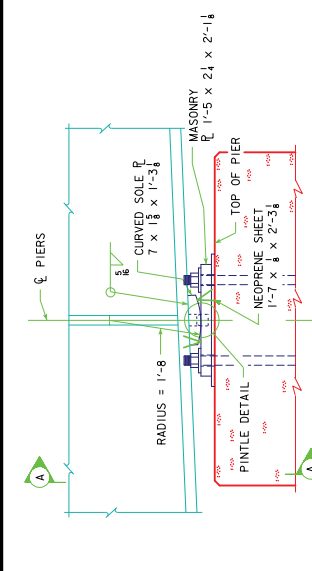
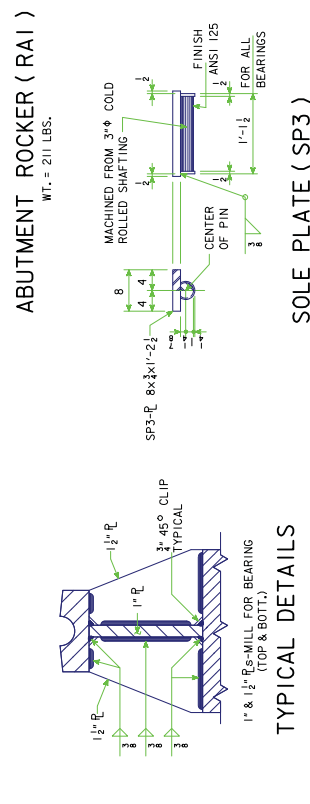
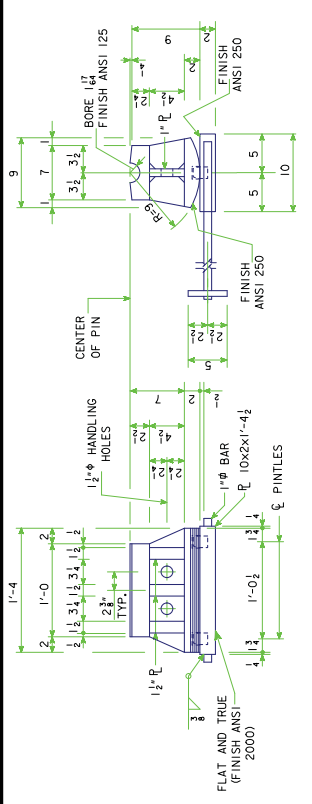
Add attached alternate sheet 38A.

This sheet provides a Rocker Weldment Alternate to the Cast Iron Rocker detailed on Sheet 38. The Contractor can use Rocker Weldment Alternate with no additional payment for the added Structural Steel weight.

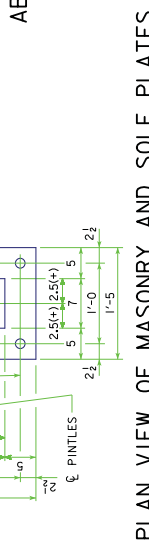
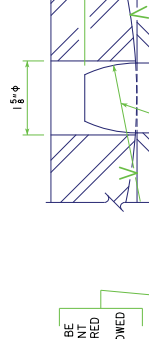
BEARING NOTES:

ALL MATERIAL USED TO CONSTRUCT ROCKER WELDMENTS, MASONRY PLATES AND KEEPER BAR ASSEMBLIES SHALL COMPLY WITH ASTM A709 GRADE 50. THE PINS SHALL BE IN ACCORDANCE WITH ARTICLE 4153.02, OF THE STANDARD SPECIFICATIONS, AND WITH THE REQUIREMENTS OF ASTM A108 STEEL. THE FINISH OF THE BEARING AREA SHALL BE IN ACCORDANCE WITH ARTICLE 2408.03.4 OF THE STANDARD SPECIFICATIONS. THE BEDDING SHALL BE A SINGLE LAYER OF 1/2 INCH NEOPRENE SHEET. THE 1/2 INCH NEOPRENE SHEETS ARE TO BE 50, 60, OR TO DUMOMETER HARDNESS AND SHALL BE 1/2 INCH GREATER IN LENGTH AND WIDTH THAN THE BOTTOM SURFACE OF THE MASONRY PLATES OR STEEL BEARINGS. AS SOON AS THE SURFACING PROCESS IS DONE, THE SURFACES FINISHED WITH AN ANS1 125 FINISH SHALL BE SHOP COATED WITH AN ANS1 125 GALVANNEAL. THE SURFACES FINISHED WITH AN ANS1 250 FINISH SHALL BE SHOP COATED WITH AN ANS1 250 GALVANNEAL. JUST BEFORE THE ERECTION OF THE STRUCTURAL STEEL IN THE FIELD, THE SHOP COATED SURFACES ARE TO BE WIPED CLEAN AND A FIELD COAT OF NLGI NO. 3 GREASE IS TO BE APPLIED.

MASONRY PLATES MP1A SHALL BE GALVANIZED AFTER THE 1" Φ BARS HAVE BEEN WELDED TO THE MASONRY PLATE. ALL MASONRY PLATES SHALL BE GALVANIZED. GALVANIZING SHALL BE IN ACCORDANCE WITH ARTICLE 4100.07, OF THE STANDARD SPECIFICATIONS. SURFACES MARKED "V" SHALL BE FINISHED ANS1 250. MASONRY PLATES ARE TO BE SET ON A 1/2 INCH NEOPRENE SHEET. ALL ROCKER WELDMENTS SHALL BE SHOP PAINTED IN ACCORDANCE WITH ARTICLE 2408.02.0 OF THE STANDARD SPECIFICATIONS. PINTLE PLATES, SOLE PLATES, ANCHOR BOLTS, AND MASONRY PLATES ARE A PART OF THE BEARING ASSEMBLY. THE NEOPRENE SHEETS SHALL BE CONSIDERED INCIDENTAL TO THE BID ITEM "STRUCTURAL STEEL". THE PINTLE PLATES, KEEPER BARS, AND MASONRY PLATES SHALL BE GALVANIZED. WELDING SHALL BE COMPLETED PRIOR TO GALVANIZING. THE SURFACES OF THE PINTLE PLATE IN CONTACT WITH THE CURVED SOLE PLATE AND THE LAMINATED NEOPRENE PAD SHALL BE FREE OF PROJECTIONS DUE TO GALVANIZING. CURVED SOLE PLATES SHALL COMPLY WITH ASTM A709 GRADE 50W AND PAINTED TO MATCH THE MASONRY PLATES. KEEPER BARS, PINTLE PLATES AND MASONRY PLATES SHALL COMPLY WITH ASTM A709 GRADE 50. ANCHOR BOLTS, NUTS AND WASHERS SHALL MEET THE REQUIREMENTS OF I.M. 453.08.



MAXIMUM REACTION (IN KIPS)	
RIA	132



DESIGN FOR WIDENING ON VARIABLE SKEW
243'-0 x 39'-0 TO A 243'-0 x VARIES
CONTINUOUS ROLLED STEEL BEAM BRIDGE
BEARING DETAILS
 46'-6, 51'-9, 72'-3, 63'-6 SPANS
 STATION 1275+84.50 (E. EXIST.) - 29 (N.B.)
POTTAWATTAMIE COUNTY
 IOWA DEPARTMENT OF TRANSPORTATION - HIGHWAY DIVISION
 DESIGN SHEET NO. 37 OF 44 FILE NO. 30169 DESIGN NO. 215

PROJECT NUMBER: IM-NIS-080-161635-03-78
 POTTAWATTAMIE COUNTY
 SHEET NUMBER: 38A

PROJECT NUMBER: IM-NIS-080-161635-03-78
 POTTAWATTAMIE COUNTY
 SHEET NUMBER: 38A

DESIGN TEAM: **hgtm**
 2/12/2015 11:27:12 AM jtk
 Z:\Projects\950413 IDOT-1-29 & T-80 CB Interchange System\CADD\dgn\Final\78080416.brg 7802155037A 11x17.pdf.plt/cr