

Status of the Iowa Workforce and Economy

2014 Statewide News Release Schedule

Reference Month	Statewide News Release	Local Area News Release
Dec	Jan 28	Jan 28
Jan	Mar 17	Mar 17
Feb	Mar 28	Mar 28
Mar	Apr 18	Apr 22
Apr	May 16	May 20
May	June 20	June 24
June	July 18	July 22
July	Aug 18	Aug 19
Aug	Sept 19	Sept 23
Sept	Oct 21	Oct 21
Oct	Nov 21	Nov 25
Nov	Dec 19	Dec 23
Dec	Jan 27	Jan 27

Iowa Nonfarm Employment by Quarter

	Average Employment	Percent Change from Prior Qtr
2013 - Qtr 1	1,519,900	0.4%
Qtr 2	1,523,800	0.3%
Qtr 3	1,534,400	0.7%
Qtr 4	1,542,900	0.6%
2014 - Qtr 1	1,538,700	-0.3%
Qtr 2	1,546,400	0.5%
Qtr 3	1,555,100	0.6%

IOWA WORKFORCE DEVELOPMENT

Information Prepared by
Labor Force and Occupational
Analysis Bureau

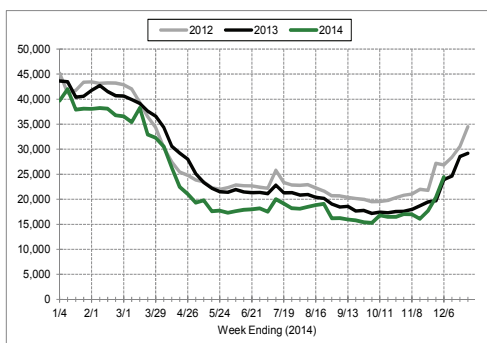
1000 East Grand Avenue
Des Moines, Iowa 50319-0209

Phone: 515-242-5862
Fax: 515-281-8203

Kerry Koonce
Division Administrator
Communications and
Labor Market Information

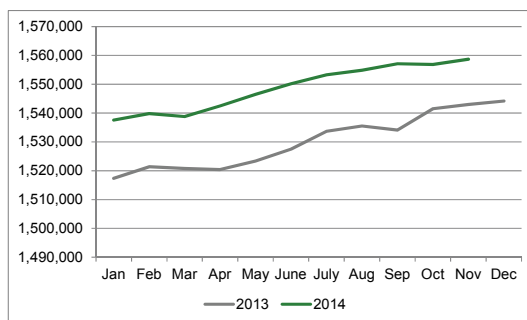
- Iowa's jobless rate for November dipped to 4.3 percent. The state's unemployment rate was 4.5 percent in October and 4.2 percent one year ago.
- The total number of working Iowans reached a current year peak of 1,639,800 in November, 37,600 higher than one year ago.
- The U.S. jobless rate remained at 5.8 percent in November. The rate was 7.0 percent one year ago.

Continued Weeks Claimed for Unemployment Insurance Iowa Regular State UI Program



- UI continued weeks claimed have increased seasonally in November due to curtailment in outdoor activity such as construction, sand and gravel quarrying, and ready-mix concrete manufacturing.
- Nationally, falling oil prices will likely slow domestic oil production, but will also provide consumers with added disposable income and reduced input costs for businesses.
- The U.S. added 321,000 jobs in November, the largest number since January 2012. The pickup in job growth in 2014 has been in sectors with higher wages.

Total Nonfarm Employment - Iowa



- Iowa's nonfarm employment increased to 1,558,700 in November, a gain of 1,800 jobs. The total is now 15,700 higher than one year ago.
- Leisure and hospitality led the job gains in November (+2,300). Professional and business services was second (+1,100).
- Education and health services added the most jobs in the private sector since November 2013 (+4,700). Construction also had a prosperous year due in part to renewed demand for residential housing (+3,600).
- Workers in Iowa's construction sector shed two hours of overtime this month. Employment and hours peaked during the summer and fall.

Iowa and U.S. Unemployment Rates - 2014

