

# A d d e n d u m

Iowa Department of Transportation  
Office of Contracts

Date of Letting: November 18, 2014  
Date of Addendum: November 13, 2014

<b>B.O.</b>	<b>Proposal ID</b>	<b>Proposal Work Type</b>	<b>County</b>	<b>Project Number</b>	<b>Addendum</b>
101	07-2187-207	PCC PAVEMENT - GRADE & NEW	BLACK HAWK	NHSX-218-7(207)--3H-07 NHSX-218-7(211)--3H-07 NHSX-218-7(212)--3H-07 NHSX-218-7(213)--3H-07 NHSX-218-7(214)--3H-07 HSIPX-218-7(230)--3L-07 STP-S-C007(134)--5E-07	18NOV101.A03

Make the following changes to the PROPOSAL SCHEDULE OF PRICES:

Change Proposal Line No. 0650 2527-9263109 PAINTED PAVEMENT MARKING,  
WATERBORNE OR SOLVENT-BASED:

From: 375.400 STA

To: 473.750 STA

Change Proposal Line No. 1030 2408-7800000 STRUCTURAL STEEL:

From: 44,950.000 LB

To: 22,669.000 LB

Change Proposal Line No. 1270 2408-7800000 STRUCTURAL STEEL:

From: 15,721.000 LB

To: 19,625.000 LB

If the above changes are not made, they will be made as shown here.

Make the following change to the PROPOSAL SPECIAL PROVISIONS TEXT and the PROPOSAL SPECIAL PROVISIONS LIST:

656.0193

\*\*\* WORK PRIOR TO THE SPECIFIED START DATES \*\*\*

Replace the SITE NUMBER 02 - COMPLETION DATE note with the following SITE NUMBER 02 - COMPLETION DATE note:

\*\*\* SITE NUMBER 02 - COMPLETION DATE \*\*\*

This site is for the contractor to complete project HSIPX-218-7(230)--3H-07 in calendar year 2015. This project is to place 4 ft. HMA shoulders from cedar falls north to county road C-50 in Janesville not including the interchange area. The contractor shall complete the project in 2015. The milled in rumble strips for this site are also to be completed by the site completion date of 11/15/15.

Make the following change to the PLAN for Project No. NHSX-218-7(211)--3H-07:

SHEET 4:

Tab. SUMMARY OF STRUCTURAL STEEL

Change the Pier #1 bearings weight from 27038 lb. to 4802 lb., and Total Structural Steel weight from 44950 lb. to 22669 lb.

SHEET 11:

PLAN VIEW OF MASONRY AND PINTLE PLATES

Change the per bearing weight from 3869 lb. to 686 lb.

Make the following change to the PLAN for Project No. NHSX-218-7(212)--3H-07:

SHEET 4:

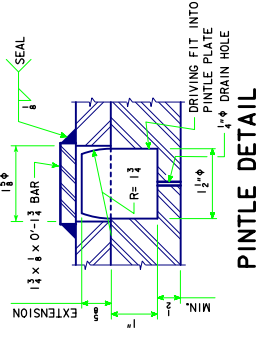
Tab. SUMMARY OF STRUCTURAL STEEL

Change the itemized structural steel quantity shown for Piers #1 & #3 from 2,464 lb each to 4,416 lb each.

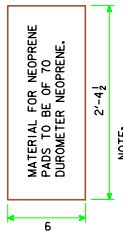
SHEET 18:

Replace Plan Sheet 18 with the attached Plan Sheet 18.

ALLOWABLE PINTLE $\bar{r}$ THICKNESS	MAXIMUM SERVICE VERTICAL LOAD, K
1.5	114
2.0	203
2.5	318



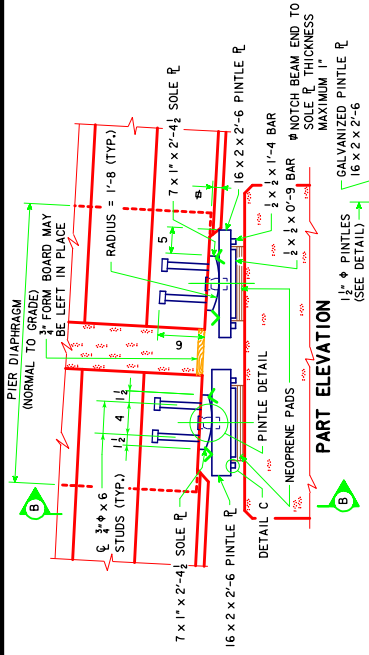
**PINTLE DETAIL**



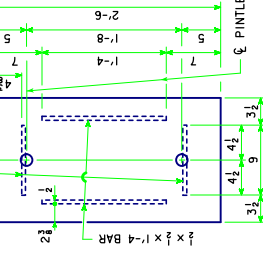
NOTE: COST OF NEOPRENE PADS SHALL BE INCLUDED IN THE PRICE BID FOR "PRETENSIONED PRESTRESSED CONCRETE BEAMS".

**FIXED PIER #2**

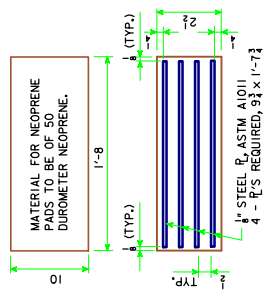
DRILL DRAIN HOLE TO AVOID INTERFERENCE WITH KEEPER BAR.



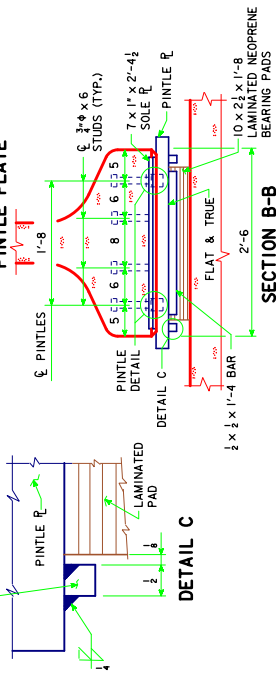
**PART ELEVATION**



**PLAN OF PINTLE PLATE**



**LAMINATED NEOPRENE PADS**



**DETAIL C**

**EXPANSION PIER BEARING NOTES:**  
 SURFACES MARKED "VA" SHALL BE FINISHED ANSI 250.  
 PINTLE PLATES ARE A PART OF THE SUPERSTRUCTURE STRUCTURAL STEEL QUANTITY.  
 COST OF ANCHORED CURVED SOLE PLATES IS TO BE INCLUDED IN THE PRICE BID FOR PRETENSIONED PRESTRESSED CONCRETE BEAMS. COST FOR NEOPRENE PADS SHALL BE CONSIDERED INCIDENTAL TO THE PRETENSIONED PRESTRESSED CONCRETE BEAM BID ITEM.  
 THE SOLE PLATES AND PINTLE PLATES SHALL BE GALVANIZED. ALL WELDING SHALL BE COMPLETED BEFORE THE NEOPRENE PADS ARE SET.  
 THE LAMINATED NEOPRENE PADS SHALL BE FREE OF PROJECTIONS DUE TO THE GALVANIZING.  
 SOLE PLATES ARE TO BE SET IN FORMS WHEN BEAMS ARE CAST AND THE BOTTOM OF BEAMS FORMED OUT AS SHOWN TO EXCLUDE CONCRETE.  
 SOLE PLATES SHALL COMPLY WITH ONE OF THE FOLLOWING :  
 ASTM A514 GRADE B  
 ASTM A709 GRADE HPS 70W

**EXPANSION PIERS #1 AND #3**

DESIGN TEAM: RDM/DAM/DLB  
 11/7/2014 12:45:11 PM dvr19h2  
 ENCL19B.EAMSDGN - 4541H - REFERENCE TO ASTM A852 WAS DELETED.  
 CORRECTION 09-12 - REFERENCE TO ASTM A852 WAS DELETED.  
 ENCL19B.EAMSDGN - 4541H - THIS SHEET ISSUED 03-08.
 PROJECT NUMBER: INSK-218-7(2)23--3H-07  
 BLACK HAWK COUNTY  
 STANDARD SHEET 4541H  
 MODIFIED  
 PROJECT NUMBER: INSK-218-7(2)23--3H-07  
 BLACK HAWK COUNTY  
 SHEET NUMBER: 18

DESIGN FOR 13° SKEW (R.A.)  
**336'-0" x 60'-0" PRETENSIONED PRECAST CONCRETE BEAM BRIDGE**  
 76'-0" END SPANS  
 92'-0" INTERIOR SPANS  
**SUPERSTRUCTURE DETAILS**  
 STATION: 10589+46.71 (C. CR27)  
**BLACK HAWK COUNTY**  
 IOWA DEPARTMENT OF TRANSPORTATION - HIGHWAY DIVISION  
 DESIGN SHEET NO. 17 OF 37 FILE NO. 30574  
 AUGUST, 2013  
 DESIGN NO. 215