

A d d e n d u m

Iowa Department of Transportation
Office of Contracts

Date of Letting: June 17, 2014
Date of Addendum: June 4, 2014

B.O.	Proposal ID	Proposal Work Type	County	Project Number	Addendum
110	97-0121-031	PCC SIDEWALK/TRAIL	WOODBURY	NHSN-012-1(31)--2R-97	17JUN110.A01

Notice: Only the bid proposal holders receive this addendum and responsibility for notifying any potential subcontractors or suppliers remains with the proposal holder.

Make the following change to the PROPOSAL DETAILS, Page 2:

Replace PROPOSAL DETAILS, Page 2 with attached PROPOSAL DETAILS, Page 2

Make the following changes to the PROPOSAL SCHEDULE OF PRICES:

Change Proposal Line No. 0040 2510-6745850 REMOVAL OF PAVEMENT:

From: 207.300 SY

To: 270.100 SY

Change Proposal Line No. 0050 2511-6745900 REMOVAL OF SIDEWALK:

From: 499.300 SY

To: 453.700 SY

Change Proposal Line No. 0060 2511-7526004 SIDEWALK, P.C. CONCRETE, 4 IN.:

From: 291.900 SY

To: 412.900 SY

Change Proposal Line No. 0070 2511-7526006 SIDEWALK, P.C. CONCRETE, 6 IN.:

From: 69.300 SY

To: 100.300 SY

Add Proposal Line No. 0161 2515-2475006 DRIVEWAY, P.C. CONCRETE, 6 IN.; 142.600 SY

Add Proposal Line No. 0162 2599-9999009 COMBINED CONCRETE SIDEWALK AND
RETAINING WALL, 6 IN. TO 12 IN.; 105.800 LF

If the above changes are not made, they will be made as shown here.

Make the following changes to the plan:

Plan Sheet C.1, Tabulation 100-4A:

Add the following Estimate Reference Information for Item 2511-7526004 SIDEWALK,
P.C. CONCRETE, 4 IN.:

4" and 6" curb behind walk and where shown on sheets S.1 thru S.8 shall be
incidental to this item .

Add the following Estimate Reference Information for Item 2511-7526006 SIDEWALK, P.C. CONCRETE, 6 IN.:

4" and 6" curb behind walk and where shown on sheets S.1 thru S.8 shall be incidental to this item .

The following is Estimate Reference Information for Item 2515-2475006 DRIVEWAY, P.C. CONCRETE, 6 IN.:

See Sheets S.1 thru S.8. Item is for replacing pavement in driveway and parking areas.

The following is Estimate Reference Information for Item 2599-9999009 COMBINED CONCRETE SIDEWALK AND RETAINING WALL, 6 IN. TO 12 IN.:

See Sheets S.1 thru S.8 and Refer to Std. Plan MI- 221. Item is for concrete retaining wall from 6" to 12" in height. Comply with Section 2516.

Measurement for wall will be linear feet as shown in the plans. Combined sidewalk will be measured and paid under the Sidewalk items. Payment will be the contract unit price per linear foot. Payment is full compensation for: Excavation and foundation preparation, Furnishing and placing concrete and reinforcing steel, Joint material, Subdrain, Porous backfill material, Suitable backfill material, Finishing disturbed areas, and Shoring as necessary.

Plan Sheets S.1-S.8:

Replace Plan Sheets S.1-S.8 with attached Plan Sheets S.1-S.8

Note: The following is a brief description of the changes to Plan Sheet S.1-S.8:

SHEET S.2

Tabulation of ADA Quantities

1. NE Quadrant of Connector "C", in the Pavement Section column for 6-in PCC (Sq. Yds.) add 0.6.

SHEET S.3

Tabulation of ADA Quantities

1. NW Quadrant of Wescott St., in the Pavement Section column for 6-in PCC (Sq. Yds.) add 5.8.
2. NW Quadrant of Wescott St., in the Pavement Section column for Removal revise number to 16.0 (from 5.8).
3. NW Quadrant of Wescott St., in the Sidewalk Section column for 4-in PCC (Sq. Yds.) revise number to 20.7 (from 16.1).
4. NE Quadrant of Wescott St., in the Pavement Section column for Removal (Sq. Yds.) add 10.9.
5. NE Quadrant of Wescott St., in the Sidewalk Section column for 4-in PCC (Sq. Yds.) revise number to 40.8 (from 25.8).

SHEET S.4

Tabulation of ADA Quantities

1. SW Quadrant of Wescott St., in the Pavement Section column for 6-in PCC (Sq. Yds.) add 13.0.
2. SW Quadrant of Wescott St., in the Pavement Section column for 6"- 12" PCC Ret. Wall (L.F.) add 27.4.
3. SW Quadrant of Wescott St., in the Pavement Section column for Removal (Sq. Yds.) revise number to 32.7 (from 19.3).
4. SW Quadrant of Wescott St., in the Sidewalk Section column for Removal (Sq. Yds.) revise number to 54.0 (from 52.8).
5. SW Quadrant of Wescott St., in the Sidewalk Section column for 4-in PCC (Sq. Yds.) revise number to 49.4 (from 30.4).
6. SW Quadrant of Wescott St., in the Pavement Section column for 6-IN PCC Curb (L.F.)* add 25.1.
7. SE Quadrant of Wescott St., in the Pavement Section column for Removal (Sq. Yds.) revise number to 22.4 (from 14.7).
8. SE Quadrant of Wescott St., in the Pavement Section column for 6-in PCC (Sq. Yds.) add 8.2.
9. SE Quadrant of Wescott St., in the Pavement Section column for 6"- 12" PCC Ret. Wall (L.F.) add 47.8.
10. SE Quadrant of Wescott St., in the Sidewalk Section column for 4-in PCC (Sq. Yds.) revise number to 60.5 (from 34.9).
11. SE Quadrant of Wescott St., in the Sidewalk Section column for Removal (Sq. Yds.) revise number to 54.0 (from 54.3).

SHEET S.5

Tabulation of ADA Quantities

1. NW Quadrant of Linn St., in the Pavement Section column for 6-in PCC (Sq. Yds.) add 1.2.
2. NW Quadrant of Linn St., in the Pavement Section column for Removal (Sq. Yds.) revise number to 9.7 (from 1.09).
3. NW Quadrant of Linn St., in the Sidewalk Section column for 4-in PCC (Sq. Yds.) revise number to 18.9 (from 3.6).
4. NE Quadrant of Linn St., in the Sidewalk Section column for 4-in PCC (Sq. Yds.) revise number to 21.8 (from 14.2).

SHEET S.6

Tabulation of ADA Quantities

1. SW Quadrant of Linn St., in the Pavement Section column for 6-in PCC (Sq. Yds.) add 32.1.
2. SW Quadrant of Linn St., in the Pavement Section column for Removal (Sq. Yds.) revise number to 55.0 (from 44.8).
3. SW Quadrant of Linn St., in the Sidewalk Section column for 4-in PCC (Sq. Yds.) revise number to 21.7 (from 22.8).
4. SW Quadrant of Linn St., in the Sidewalk Section column for 6-in PCC (Sq. Yds.) revise number to 17.3 (from 5.1).
5. SE Quadrant of Linn St., in the Pavement Section column for Removal (Sq. Yds.) revise number to 59.8 (from 60.4).
6. SE Quadrant of Linn St., in the Pavement Section column for 6-in PCC (Sq. Yds.) add 59.8.
7. SE Quadrant of Linn St., in the Sidewalk Section column for 4-in PCC (Sq. Yds.) revise number to 14.3 (from 25.1).
8. SE Quadrant of Linn St., in the Sidewalk Section column for 6-in PCC (Sq. Yds.) revise number to 22.0 (from 5.3).

SHEET S.7

Tabulation of ADA Quantities

1. NW Quadrant of Fairmount St., in the Pavement Section column for 6-in PCC (Sq. Yds.) add 5.3.
2. NW Quadrant of Fairmount St., in the Pavement Section column for Removal (Sq. Yds.) revise number to 8.6 (from 5.3).
3. NW Quadrant of Fairmount St., in the Sidewalk Section column for Removal (Sq. Yds.) revise number to 51.7 (from 55.0).
4. NW Quadrant of Fairmount St., in the Sidewalk Section column for 4-in PCC (Sq. Yds.) revise number to 47.7 (from 18.7).
5. NW Quadrant of Fairmount St., in the Pavement Section column for 4-IN PCC Curb (L.F.)* add 26.6.
6. NE Quadrant of Fairmount St., in the Sidewalk Section column for 4-in PCC (Sq. Yds.) revise number to 7.4 (from 10.3).
7. NE Quadrant of Fairmount St., in the Sidewalk Section column for 6-in PCC (Sq. Yds.) revise number to 7.7 (from 10.3).

SHEET S.8

Tabulation of ADA Quantities

1. SW Quadrant of Fairmount St., in the Pavement Section column for 6-in PCC (Sq. Yds.) add 17.2.
2. SW Quadrant of Fairmount St., in the Pavement Section column for 6"- 12" PCC Ret. Wall (L.F.) add 30.6.
3. SW Quadrant of Fairmount St., in the Pavement Section column for Removal (Sq. Yds.) revise number to 45.8 (from 36.3).
4. SW Quadrant of Fairmount St., in the Pavement Section column for 6-IN PCC Curb (L.F.)* add 23.1.
5. SW Quadrant of Fairmount St., in the Sidewalk Section column for 4-in PCC (Sq. Yds.) revise number to 76.2 (from 35.4).
6. SW Quadrant of Fairmount St., in the Sidewalk Section column for 6-in PCC (Sq. Yds.) revise number to 6.6 (from 6.5).
7. SE Quadrant of Fairmount St., in the Pavement Section column for Removal (Sq. Yds.) add 9.2.
8. SE Quadrant of Fairmount St., in the Sidewalk Section column for 4-in PCC (Sq. Yds.) revise number to 33.5 (from 24.9).
9. SE Quadrant of Fairmount St., in the Sidewalk Section column for Removal (Sq. Yds.) revise number to 32.4 (from 35.4).
10. SE Quadrant of Fairmount St., in the Pavement Section column for 6-IN PCC Curb (L.F.)* add 22.8.

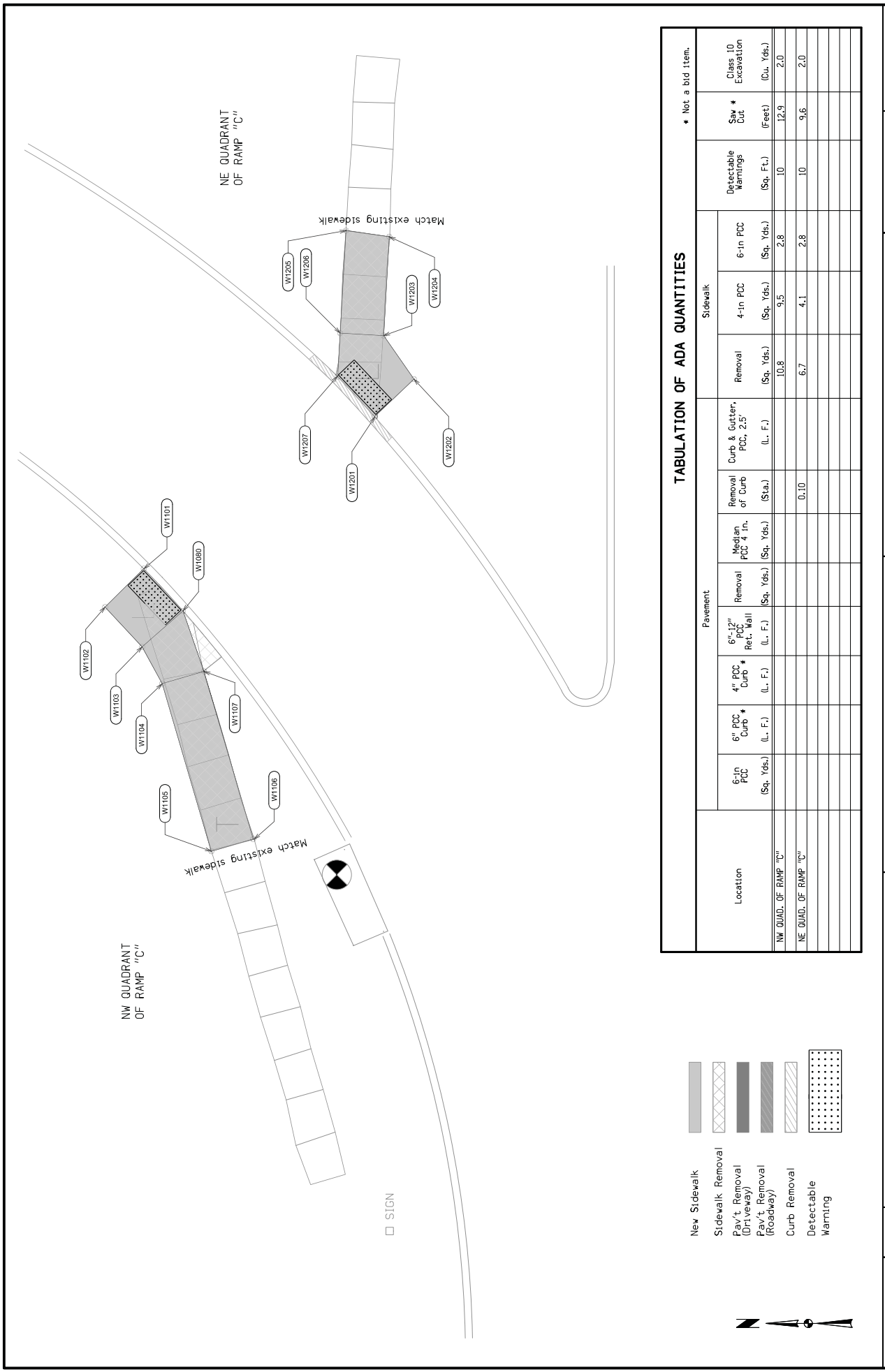
PROPOSAL DETAILS

Proposal ID No.:	97-0121-031	Bid Order No.:	110
Primary Work Type:	PCC SIDEWALK/TRAIL	Letting Date:	June 17, 2014 10:00 A.M.

Site Number	Contract Period/ Site Description		Liquidated Damages
CONTRACT	LATE START DATE: 08/18/14	35 WORKING DAYS	\$ 800.00
01	NO START DATE SPECIFIED FOR CLOSURE OF THE DRIVEWAY TO TASTEE INN AND OUT.	10 WORKING DAYS	\$ 800.00

=====

PROPOSAL NOTES

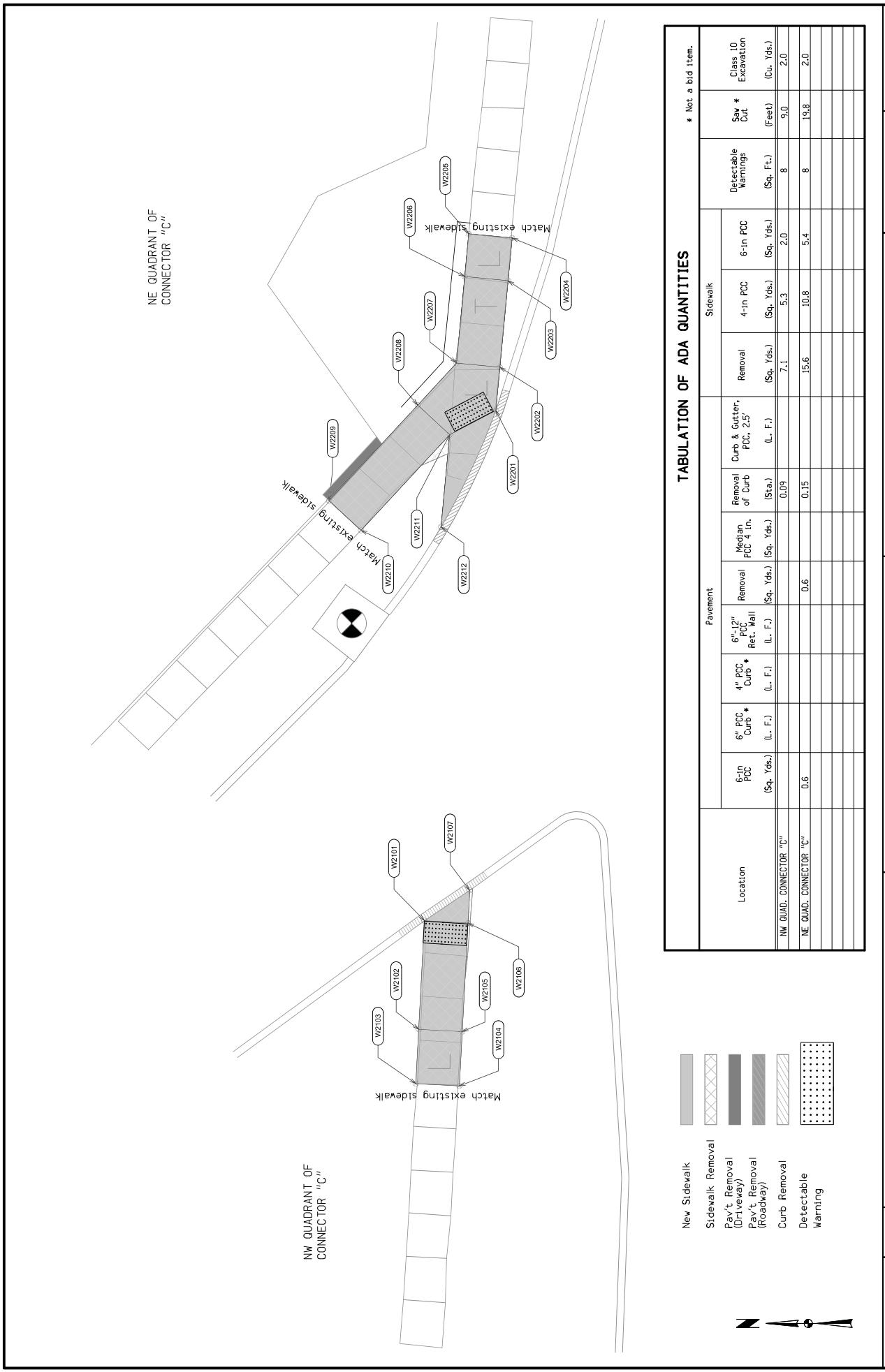


TABULATION OF ADA QUANTITIES

* Not a bid item.

Location	Pavement				Sidewalk				Detectable Warnings (Sq. Ft.)	Saw * Cut (Feet)	Class 10 Excavation (Cu. Yds.)	
	6-in PCC Curb # (L. F.)	4-in PCC Curb # (L. F.)	6"-12" PCC Ret. Wall (L. F.)	Removal of Curb (Sta.)	Medisp. PCC 4 in. (Sq. Yds.)	Removal of Curb (Sta.)	Removal (Sq. Yds.)	4-in PCC (Sq. Yds.)				6-in PCC (Sq. Yds.)
NW QUAD. OF RAMP "C"				0.10			10.8	9.5	2.8	10	17.9	2.0
NE QUAD. OF RAMP "C"						6.7	4.1	2.8	10	9.6	2.0	

- New Sidewalk
- Sidewalk Removal
- Pav't. Removal (Driveway)
- Pav't. Removal (Roadway)
- Curb Removal
- Detectable Warning



NE QUADRANT OF CONNECTOR "C"

NW QUADRANT OF CONNECTOR "C"

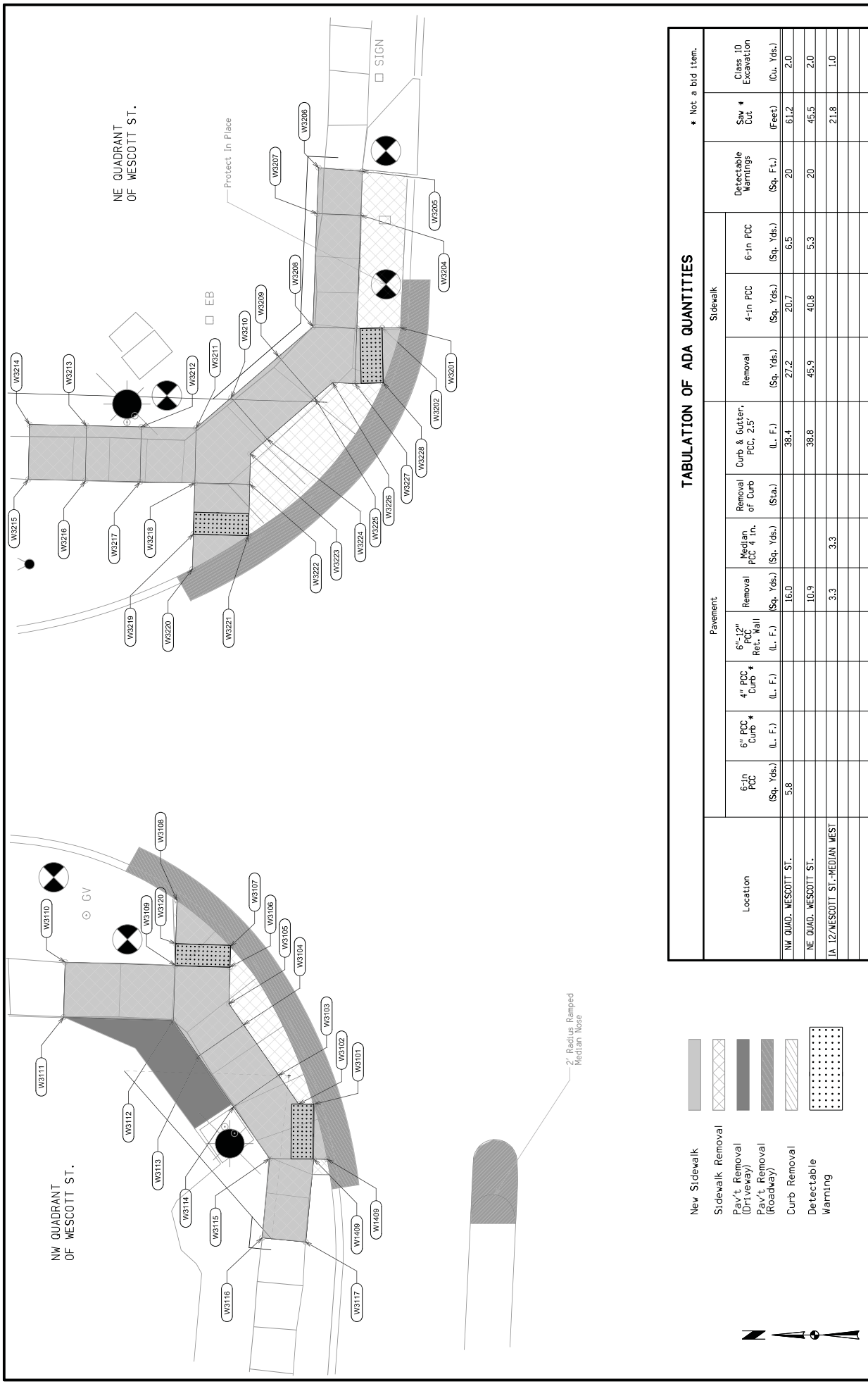
TABULATION OF ADA QUANTITIES

* Not a bid item.

Location	Pavement						Sidewalk			Detectable Warnings (Sq. Ft.)	Sav * Cut (Feet)	Class 10 Excavation (Cu. Yds.)	
	6-in PCC Curb * (Sq. Yds.) (L. F.)	4-in PCC Curb * (L. F.)	6"-12" PCC Ret. Wall (L. F.)	Removal PCC 4 in. (Sq. Yds.)	Median PCC 4 in. (Sq. Yds.)	Removal of Curb (Sta.)	Curb & Gutter, PCC, 2.5' (L. F.)	Removal (Sq. Yds.)	4-in PCC (Sq. Yds.)				6-in PCC (Sq. Yds.)
NW QUAD. CONNECTOR "C"	0.6					0.09		7.1	5.3	2.0	8	9.0	2.0
NE QUAD. CONNECTOR "C"				0.6		0.15		15.6	10.8	5.4	8	19.8	2.0

- New Sidewalk
- Sidewalk Removal
- Pav't Removal (Driveway)
- Pav't Removal (Roadway)
- Curb Removal
- Detectable Warning

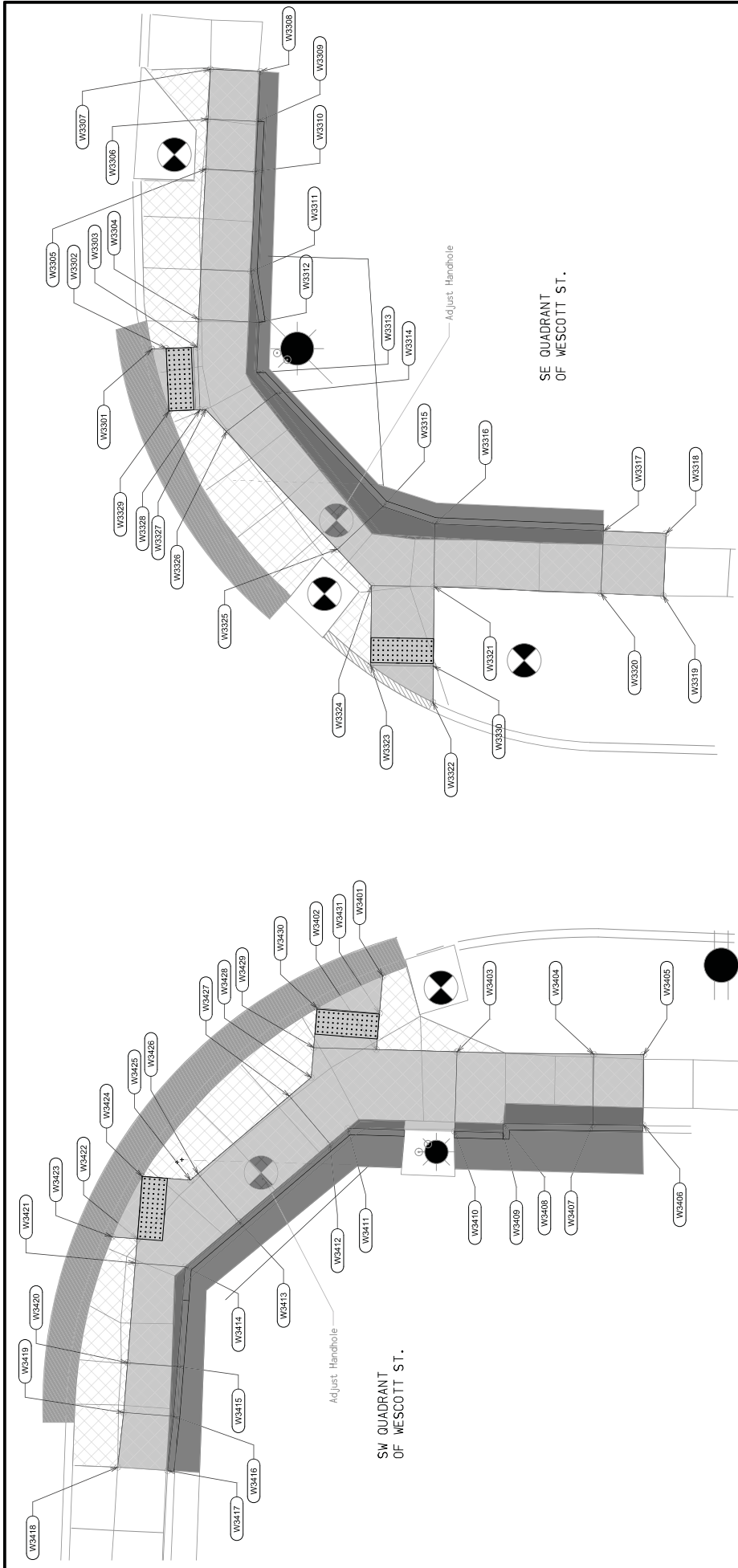




TABULATION OF ADA QUANTITIES

* Not a bid item.

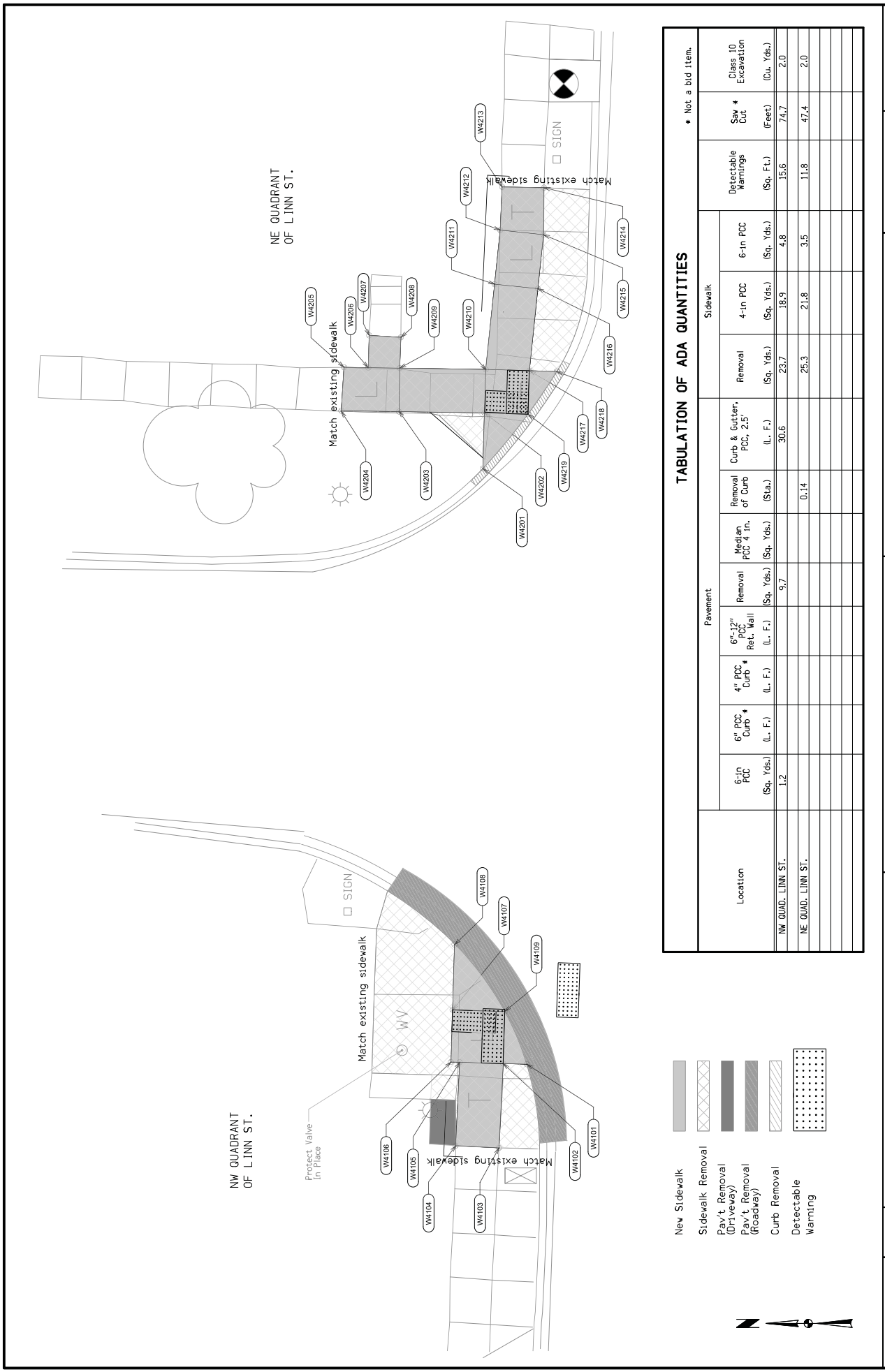
Location	Pavement					Sidewalk			Detectable Warnings (Sq. Ft.)	Saw * Cut (Feet)	Class 10 Excavation (Cu. Yds.)
	6" PCC Curb *	4" PCC Curb *	6"-12" PCC Ret. Wall (L. F.)	Removal of Curb (Sta.)	Removal of Median PCC 4 in. (Sq. Yds.)	Removal (Sq. Yds.)	4-in PCC (Sq. Yds.)	6-in PCC (Sq. Yds.)			
NW QUAD. WESCOTT ST.	5.8		16.0	38.4	27.2	20.7	6.5	20	61.2	2.0	
NE QUAD. WESCOTT ST.			10.9	38.8	45.9	40.8	5.3	20	45.5	2.0	
EA 12/WESCOTT ST.-MEDIAN WEST			3.3		3.3				21.8	1.0	



TABULATION OF ADA QUANTITIES

* Not a bid item.

Location	Pavement					Sidewalk			Detectable Warnings (Sq. Ft.)	Saw * Cut (Feet)	Class 10 Excavation (Cu. Yds.)
	6" PCC Curb*	4" PCC Curb*	6"-12" PCC Ret. Wall (L. F.)	Removal of Curb (Sta.)	Median PCC 4 in. (Sq. Yds.)	Removal (Sq. Yds.)	4-in PCC (Sq. Yds.)	6-in PCC (Sq. Yds.)			
SW QUAD. WESCOTT ST.	13.0	25.1	27.4	32.7	51.7	54.0	49.4	8.6	20	126.6	2.0
SE QUAD. WESCOTT ST.	8.2		47.8	22.4	26.8	54.0	60.5	6.0	20	128.7	2.0



NW QUADRANT OF LINN ST.

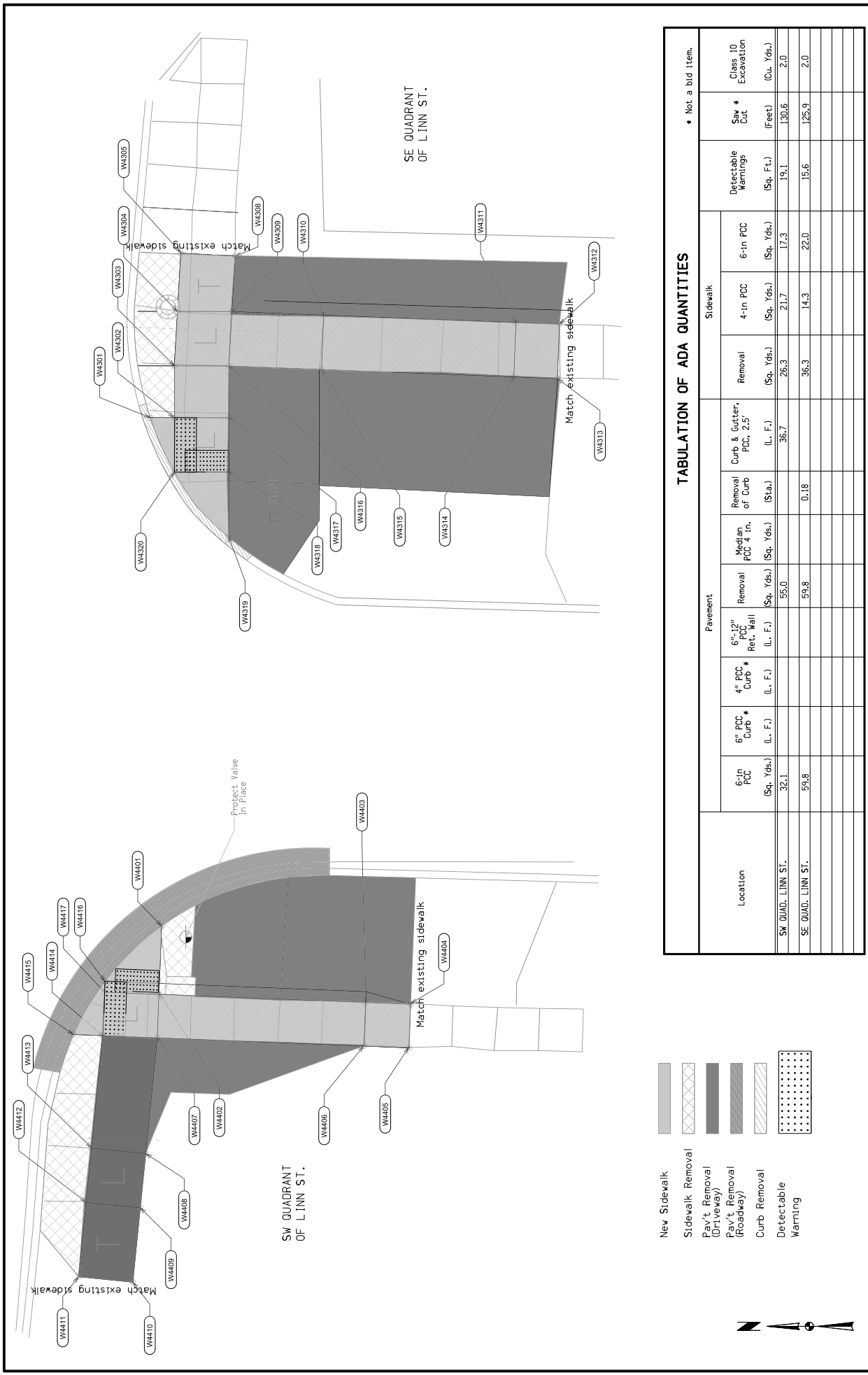
NE QUADRANT OF LINN ST.

TABULATION OF ADA QUANTITIES

* Not a bid item.

Location	Pavement						Sidewalk			Detectable Warnings (Sq. Ft.)	Saw * Cut (Feet)	Class 10 Excavation (Cu. Yds.)	
	6" PCC Curb*	4" PCC Curb*	6"-12" PCC Ret. Wall (L. F.)	Removal of Pav't (Sq. Yds.)	Median PCC 4 in. (Sq. Yds.)	Removal of Curb (Sta.)	Curb & Butter, PCC, 2.5' (L. F.)	Removal (Sq. Yds.)	4-in PCC (Sq. Yds.)				6-in PCC (Sq. Yds.)
NW QUAD. LINN ST.	1.2			9.7		0.14	30.6	23.7	18.9	4.8	15.6	74.7	2.0
NE QUAD. LINN ST.								25.3	21.8	3.5	11.8	47.4	2.0

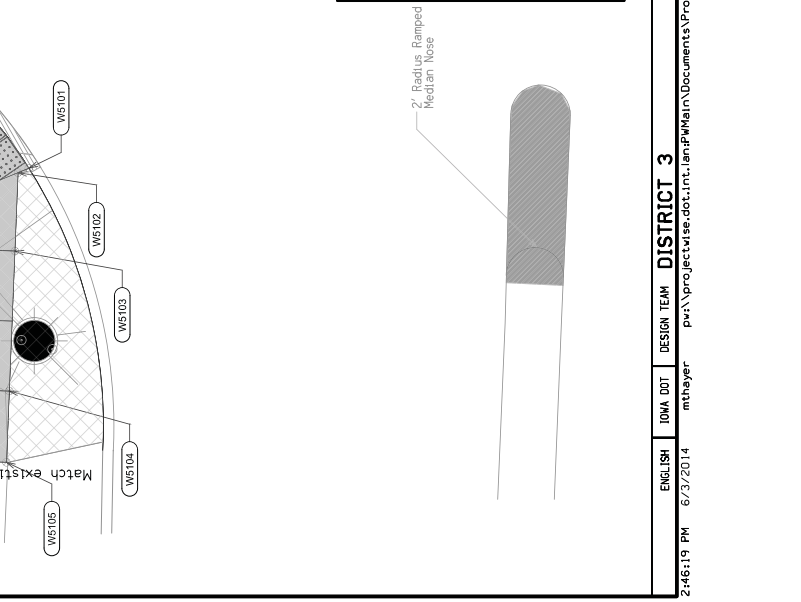
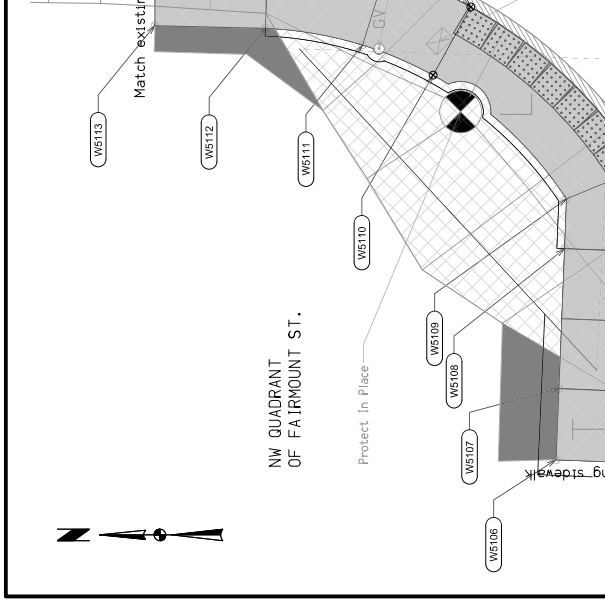
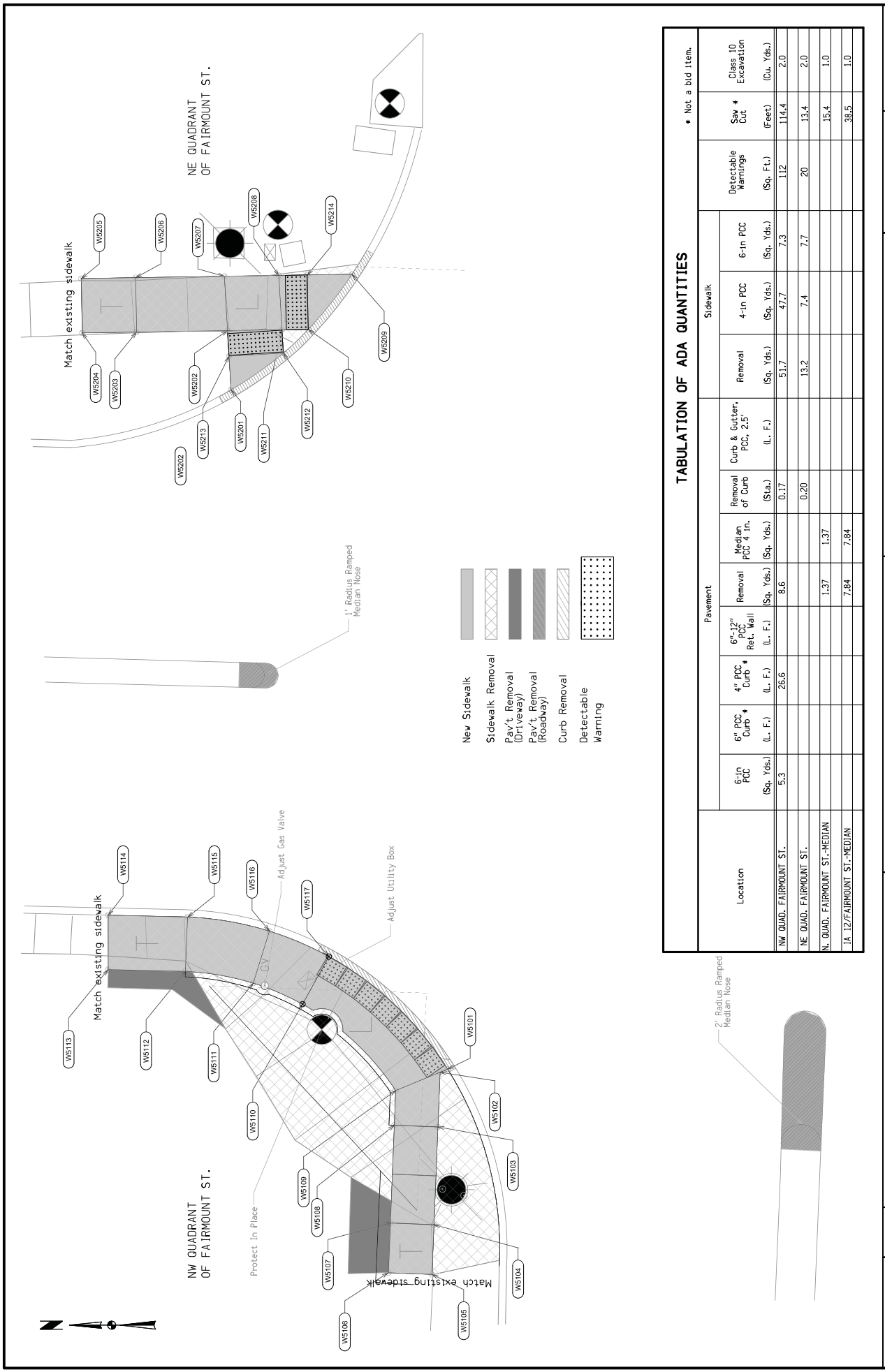
- New Sidewalk
- Sidewalk Removal
- Pav't Removal (Driveway)
- Pav't Removal (Roadway)
- Curb Removal
- Detectable Warning



TABULATION OF ADA QUANTITIES

* Not a bid item.

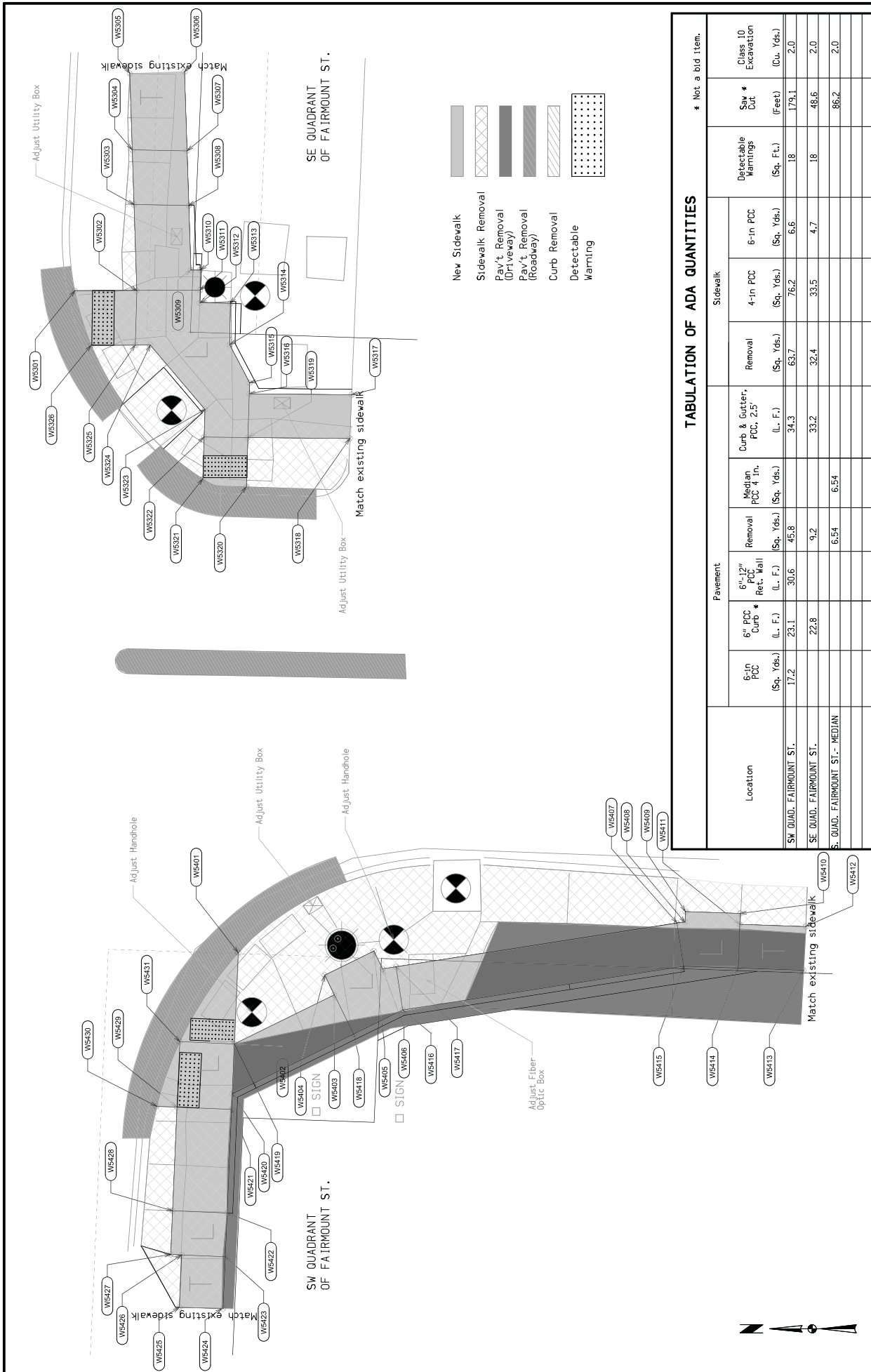
Location	Pavement						Sidewalk			Detectable Warnings (Sq. Ft.)	Sav * Cut (Feet)	Class 10 Excavation (Cu. Yds.)
	6" PCC Curb *	4" PCC Curb *	6"-12" PCC Ret. Wall	Removal of Curb (Sta.)	Median PCC 4 in. (Sq. Yds.)	Removal of Curb (L. F.)	Removal (Sq. Yds.)	4-in PCC (Sq. Yds.)	6-in PCC (Sq. Yds.)			
SW QUAD. LINN ST.	32.1		55.0	36.7	26.3	21.7	17.3	19.1	130.6	2.0		
SE QUAD. LINN ST.	59.8		59.8	0.18	36.3	14.3	22.0	15.6	125.9	2.0		



TABULATION OF ADA QUANTITIES

* Not a bid item.

Location	Pavement						Sidewalk				Detectable Warnings (Sq. Ft.)	Sav * Cut (feet)	Class 10 Excavation (Cu. Yds.)
	6" PCC Curb* (L. F.)	4" PCC Curb* (L. F.)	6"-12" PCC Ret. Wall (L. F.)	Removal of Curb (Sta.)	Median PCC 4" th. (Sq. Yds.)	Removal of Curb (Sta.)	Curb & Butter, PCC, 2.5' (L. F.)	Removal (Sq. Yds.)	4-in PCC (Sq. Yds.)	6-in PCC (Sq. Yds.)			
NW QUAD. FAIRMOUNT ST.	5.3	26.6		0.17		13.2	51.7	47.7	7.3	112	114.4	2.0	
NE QUAD. FAIRMOUNT ST.				0.20	1.37		13.2	7.4	7.7	20	13.4	2.0	
NW QUAD. FAIRMOUNT ST.-MEDIAN					7.84						15.4	1.0	
NE QUAD. FAIRMOUNT ST.-MEDIAN					7.84						35.5	1.0	



TABULATION OF ADA QUANTITIES

* Not a bid item.

Location	Pavement			Sidewalk			Detectable Warnings (Sq. Ft.)	Saw Cut (Feet)	Class 10 Excavation (Cu. Yds.)
	6" PCC Curb (L. F.)	6 1/2" PCC Ret. Wall (L. F.)	Removal (Sq. Yds.)	6-in PCC (Sq. Yds.)	4-in PCC (Sq. Yds.)	6-in PCC (Sq. Yds.)			
SW QUAD. FAIRMOUNT ST.	17.2	23.1	30.6	45.8	9.2	6.54	18	179.1	2.0
SE QUAD. FAIRMOUNT ST.	22.8	22.8	33.2	32.4	33.5	4.7	18	48.6	2.0
S. QUAD. FAIRMOUNT ST. - MEDIAN					6.54			86.2	2.0