

A d d e n d u m

Iowa Department of Transportation
Office of Contracts

Date of Letting: May 20, 2014
Date of Addendum: April 22, 2014

B.O.	Proposal ID	Proposal Work Type	County	Project Number	Addendum
105	27-0351-153	PCC PAVEMENT - GRADE & REPLACE	DECATUR	IMX-035-1(153)12--02-27	20MAY105.A01

Notice: Only the bid proposal holders receive this addendum and responsibility for notifying any potential subcontractors or suppliers remains with the proposal holder.

Make the following change to the PROPOSAL SCHEDULE OF PRICES:

Change Proposal Line No. 0080 2301-1004110 STANDARD OR SLIP-FORM PORTLAND CEMENT CONCRETE PAVEMENT, QM-C, CLASS 3I DURABILITY, 11 IN.:

From: 190,123.300 SY

To: 181,302.100 SY

If the above change is not made, it will be made as shown here.

Make the following changes to the plan:

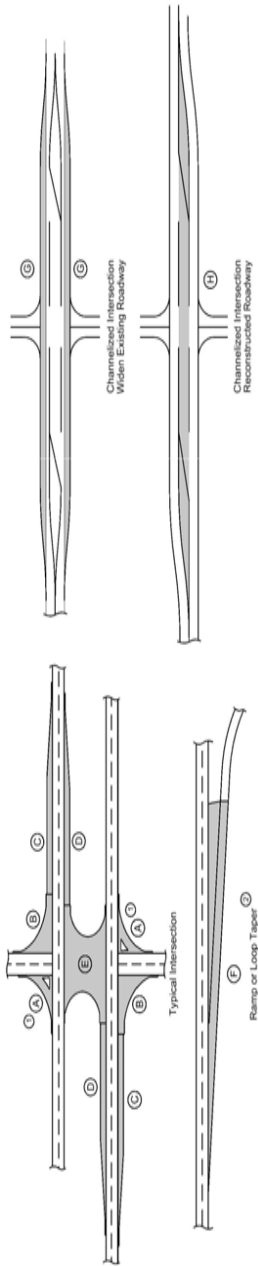
Plan Sheet C.8:

Replace Tabulation 100-24M with attached Tabulation 100-24M

Plan Sheet D.1:

Replace plan sheet D.1 with attached plan sheet D.1

PCC PAVEMENT

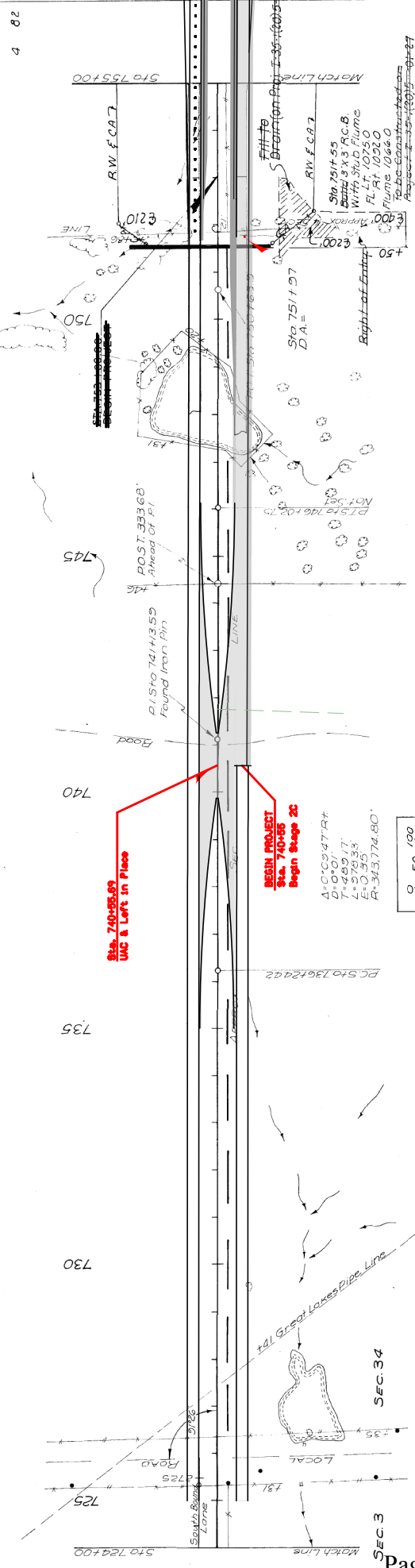


- ① Does not include island area or curb. Refer to tabulation 112-4 for quantities.
- ② See U Sheets for Details.
- ③ Quantity includes Pavement Header.

Road Identification	Location	Direction of Travel	Station to Station	Width FT	Length FT	Area SV	Area (1)										Special Backfill TOMS	Class 13 Excavation CV	Granular Subbase SY	Remarks				
							A	B	C	D	E	F	G	H	Total Area By Pavement Thickness									
																	10 IN	11 IN	12 IN					
I-35 NB			740+55.00	1337+59.91	26.0	59704.9	172480.9											172480.9	175537.4	251624.0	212284.1			
I-35 SB			740+55.00	1337+59.91	26.0	59704.9	172480.9											172480.9	175537.4	251624.0	212284.1			
I-35 NB			755+25.00	761+20.80	See U.2	595.8												998.4	625.0	76.0	998.4			
I-35 SB			755+25.00	761+20.80	See U.2	595.8												998.4	625.0	76.0	998.4			
GR Ramp B Taper			1053+73.62	1065+33.60	See U.1	1160.0												1942.0	1223.5	148.0	1942.0			
GR Ramp D Taper			1053+73.62	1065+33.60	See U.1	1160.0												1942.0	1223.5	148.0	1942.0			
VII Ramp B Taper			1258+40.00	1264+35.80	See U.2	595.8												998.4	625.0	76.0	998.4			
VII Ramp D Taper			1258+40.00	1264+35.80	See U.2	595.8												998.4	625.0	76.0	998.4			
			1287+23.52	1298+43.50	See U.1	1160.0												1942.0	1223.5	148.0	1942.0			
Total						172480.9												181302.1	181089.9	252296.0	211095.3			

BURRELL TWP
768N R26W
SEC. 4

DECATUR TWP
765N R26W
SEC. 33



Sta. 740+85.89
UNC & Left in Place

BEGIN PROJECT
Sta. 740+85
Begin Stage 2C

$A=0^{\circ}09'47.74''$
 $D=0^{\circ}01'$
 $L=499.17'$
 $L=505.53'$
 $R=343,774.80'$

