



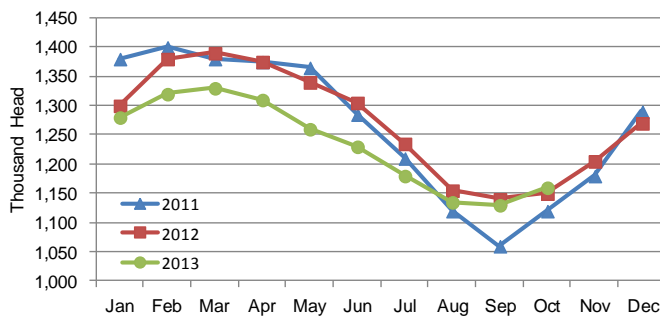
## IOWA CATTLE ON FEED

Cattle and calves on feed for slaughter market in Iowa for all feedlots totaled 1,160,000 on October 1, 2013 according to the USDA, National Agricultural Statistics Service, Iowa Field Office. The inventory is up 3 percent from September 1, 2013 and up 1 percent from October 1, 2012. Feedlots with a capacity greater than 1,000 head had 560,000 head on feed, up 2 percent from last month but down 5 percent from last year. Feedlots with a capacity less than 1,000 head had 600,000 head on feed, up 3 percent from last month and up 7 percent from last year.

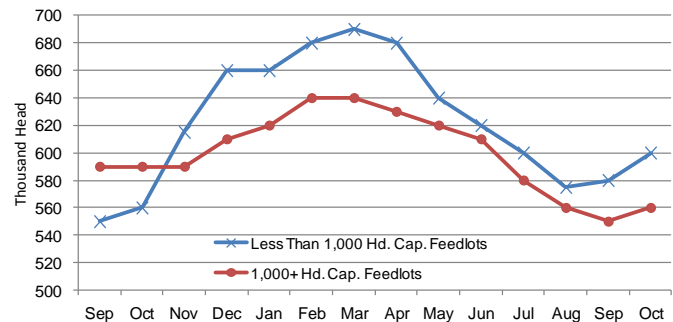
Placements during September totaled 226,000 head, an increase of 59 percent from last month and up 26 percent from last year. Feedlots with a capacity greater than 1,000 head placed 101,000 head, up 53 percent from last month and up 13 percent from last year. Feedlots with a capacity less than 1,000 head placed 125,000 head. This is up 64 percent from last month and up 39 percent from last year.

Marketings for September were 190,000 head, up 36 percent from last month and up 16 percent from last year. Feedlots with a capacity greater than 1,000 head marketed 89,000 head, up 22 percent from last month and up 2 percent from last year. Feedlots with a capacity less than 1,000 head marketed 101,000 head, up 51 percent from last month and up 31 percent from last year. Other disappearance totaled 6,000 head.

**Cattle on Feed, Inventory on all Feedlots, Iowa: 2011-2013**



**Cattle on Feed, Inventory by Feedlot Capacity, Iowa: Current Month & Past 12 Months**



### All Cattle on Feed, Iowa

Item	Lots 1,000+ Head (1,000 Head)	Lots Less than 1,000 Head (1,000 Head)	All Lots (1,000 Head)
Cattle on Feed, September 1, 2013 .....	550	580	1,130
September Placements .....	101	125	226
September Marketings .....	89	101	190
September Other Disappearance .....	2	4	6
Cattle on Feed, October 1, 2013 .....	560	600	1,160

## Cattle on Feed: Number on Feed, Placements, Marketings, and Other Disappearance by Month, 1,000+ Capacity Feedlots

[Cattle and calves on feed are animals for slaughter market being fed a ration of grain or other concentrates and are expected to produce a carcass that will grade select or better.]

State	Cattle on Feed October 1			Placements during September			Marketings during September			September Disappearance other than Slaughter <sup>1</sup>		
	2012	2013	'13 as % of '12	2012	2013	'13 as % of '12	2012	2013	'13 as % of '12	2012	2013	'13 as % of '12
	(1,000 Head)	(1,000 Head)	(Percent)	(1,000 Head)	(1,000 Head)	(Percent)	(1,000 Head)	(1,000 Head)	(Percent)	(1,000 Head)	(1,000 Head)	(Percent)
Arizona .....	272	268	99	20	23	115	18	20	111	1	1	100
California .....	475	500	105	50	50	100	52	53	102	3	2	67
Colorado .....	1,000	870	87	225	190	84	150	145	97	5	5	100
Idaho .....	230	210	91	61	62	102	35	41	117	1	1	100
<b>Iowa .....</b>	<b>590</b>	<b>560</b>	<b>95</b>	<b>89</b>	<b>101</b>	<b>113</b>	<b>87</b>	<b>89</b>	<b>102</b>	<b>2</b>	<b>2</b>	<b>100</b>
Kansas .....	2,230	2,000	90	375	390	104	310	355	115	15	15	100
Nebraska .....	2,330	2,210	95	470	520	111	370	390	105	10	10	100
Oklahoma .....	335	285	85	57	67	118	45	60	133	2	2	100
South Dakota .....	195	180	92	50	43	86	39	32	82	1	1	100
Texas .....	2,680	2,460	92	480	480	100	400	430	108	20	20	100
Washington .....	213	184	86	46	37	80	40	36	90	1	1	100
Other States .....	439	417	95	81	62	77	52	44	85	3	2	67
United States ...	10,989	10,144	92	2,004	2,025	101	1,598	1,695	106	64	62	97

(D) Withheld to avoid disclosing data for individual operations.

<sup>1</sup> Includes death loss, movement from feedlots to pasture, and shipments to other feedlots for further feeding.

## Cattle on Feed: Number on Feed by Class, 1,000+ Capacity Feedlots by Quarter, State, and United States, 2012-2013

State	Steers & Steer Calves			Heifers & Heifer Calves			Cows & Bulls		
	October 1, 2012	July 1, 2013	October 1, 2013	October 1, 2012	July 1, 2013	October 1, 2013	October 1, 2012	July 1, 2013	October 1, 2013
	(1,000 Head)	(1,000 Head)	(1,000 Head)	(1,000 Head)	(1,000 Head)	(1,000 Head)	(1,000 Head)	(1,000 Head)	(1,000 Head)
Arizona .....	268	262	261	4	5	7	0	0	0
California .....	410	445	455	65	68	44	0	2	1
Colorado .....	670	590	560	325	325	305	5	5	5
Idaho .....	137	102	115	89	92	90	4	1	5
<b>Iowa .....</b>	<b>415</b>	<b>430</b>	<b>355</b>	<b>175</b>	<b>150</b>	<b>205</b>	<b>0</b>	<b>0</b>	<b>0</b>
Kansas .....	1,200	1,070	1,060	1,025	930	935	5	10	5
Nebraska .....	1,400	1,355	1,390	900	810	810	30	15	10
Oklahoma .....	225	200	190	110	105	95	0	0	0
South Dakota .....	108	105	104	75	71	67	12	24	9
Texas .....	1,690	1,560	1,540	989	999	919	1	1	1
Washington .....	137	104	109	74	96	72	2	3	3
Other States .....	300	304	303	136	128	113	3	1	1
United States .....	6,960	6,527	6,442	3,967	3,779	3,662	62	62	40

# MONTHLY PRICES

The preliminary October 2013 average price received by farmers for corn in Iowa is \$4.50 per bushel according to the latest USDA, National Agricultural Statistics Service – *Agricultural Prices* report. This is \$2.32 lower than the October 2012 final average price. The preliminary October Iowa average soybean price, at \$12.40 per bushel is \$1.70 lower than the October 2012 final average price. The preliminary October oat price is \$4.10 per bushel, \$0.10 above the October 2012 final average price.

All hay prices in Iowa averaged \$176.00 per ton in October, \$11.00 per ton less than October 2012. Alfalfa hay prices fell \$16.00 per ton from one year ago, to \$195.00 and other hay prices were \$3.00 per ton lower than last year, at \$130.00. Iowa dairy farmers received an average of \$20.50 per cwt for milk sold in October, \$2.00 per cwt less than one year ago.

## Prices Received by Farmers

<b>IOWA</b>	Oct 2012	Sept 2013	Oct <sup>1</sup> 2013
-----Dollars-----			
Corn ..... Bu	6.82	5.66	4.50
Soybeans ..... Bu	14.10	13.90	12.60
Oats ..... Bu	4.00	4.02	4.10
All Hay, baled ..... Ton	187.00	195.00	176.00
Alfalfa Hay, baled ..... Ton	211.00	210.00	195.00
Other Hay, baled ..... Ton	133.00	130.00	130.00
Milk Cows <sup>2</sup> ..... Hd	(NA)	(NA)	(NA)
Milk (whls) ..... Cwt	22.50	20.40	20.50

<b>UNITED STATES</b>	Oct 2012	Sept 2013	Oct <sup>1</sup> 2013
-----Dollars-----			
Corn ..... Bu	6.78	5.40	4.49
Soybeans ..... Bu	14.20	13.30	12.60
Oats ..... Bu	3.93	3.57	3.51
All Hay, baled ..... Ton	191.00	176.00	177.00
Alfalfa Hay, baled ..... Ton	212.00	194.00	193.00
Other hay, baled ..... Ton	144.00	136.00	141.00
Hogs, all ..... Cwt	62.00	70.70	69.70
Brw & Gilts ..... Cwt	62.70	70.60	69.40
Sows ..... Cwt	43.30	74.40	77.40
Beef Cattle ..... Cwt	123.00	123.00	122.00
Cows ..... Cwt	77.30	82.50	79.70
Strs & Hfrs ..... Cwt	127.00	127.00	128.00
Calves ..... Cwt	164.00	182.00	176.00
Milk Cows <sup>2</sup> ..... Hd	(NA)	(NA)	(NA)
Milk (whls) ..... Cwt	21.60	20.10	20.30
Eggs (mkt) <sup>3</sup> ..... Doz	1.020	1.040	1.040

(NA) Not available.

<sup>1</sup> Preliminary

<sup>2</sup> Animals sold for dairy herd replacement only. Prices estimated in January, April, July, and October.

<sup>3</sup> Eggs are mid-month prices.

## Prices Index Summary, United States

<b>PRICES RECEIVED INDEX</b>	Oct 2012	Sept 2013	Oct 2013	Oct 2012	Sept 2013	Oct 2013
			1910-14=100		1990-92=100	
All Products .....	1332	1180	1189	210	186	187
Crops .....	1182	1021	1004	238	206	203
Food grains .....	839	723	751	265	228	237
Feed grains & hay .....	1045	837	710	293	235	199
Oilseeds .....	1350	1273	1233	246	232	225
Lvstk .....	1242	1253	1252	162	163	163
Meat Animals .....	1637	1679	1671	161	165	164
Dairy Prod. ....	1329	1237	1249	165	154	155
Poultry & eggs .....	455	477	473	162	170	168

<b>PRICES PAID INDEX</b>	Oct 2012	Sept 2013	Oct 2013	Oct 2012	Sept 2013	Oct 2013
			1910-14=100		1990-92=100	
Prices Paid .....	2897	2888	2898	218	217	218
Production .....	2250	2227	2236	232	230	230
Feed .....	1365	1239	1244	280	254	255
Livestock & pltry .....	2084	2242	2354	163	175	184
Seeds .....	3606	3776	3776	364	381	381
Fertilizer .....	1196	1031	1034	326	281	282
Chemicals .....	954	981	987	154	159	160
Fuels .....	2852	2818	2771	370	365	359
Ratio .....	(NA)	(NA)	(NA)	96	86	86
Parity Ratio <sup>1</sup> .....	46	41	41	(NA)	(NA)	(NA)

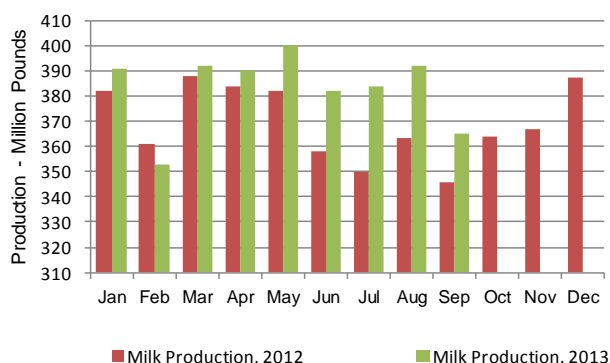
(NA) Not available.

<sup>1</sup> Ratio of index of prices received to index of prices paid for commodities and services, interest, taxes, and farm wage rates.

# MILK PRODUCTION

**Milk production** in Iowa during September 2013 totaled 365 million pounds, up 5.5 percent from September 2012, according to the USDA, National Agricultural Statistics Service – *Milk Production* report. The average number of milk cows on hand during the month, at 207,000 head, was up 6,000 from last year. Production per cow averaged 1,765 pounds during September.

**Milk Production, Iowa, 2012-2013**



**Milk Cows and Production: Selected States, September 2012 and 2013**

State	Milk Cows <sup>1</sup>		Milk Per Cow <sup>2</sup>		Milk Production <sup>2</sup>		
	2012 (1,000 Head)	2013 (1,000 Head)	2012 (Pounds)	2013 (Pounds)	2012 (Million Pounds)	2013 (Million Pounds)	Change from 2012 (Percent)
Arizona .....	181	188	1,745	1,720	316	323	2.2
California .....	1,779	1,781	1,790	1,795	3,184	3,197	0.4
Colorado .....	135	137	1,955	1,965	264	269	1.9
Florida .....	123	123	1,250	1,340	154	165	7.1
Idaho .....	579	570	1,930	1,930	1,117	1,100	-1.5
Illinois .....	100	98	1,470	1,490	147	146	-0.7
Indiana .....	174	177	1,685	1,710	293	303	3.4
<b>Iowa .....</b>	<b>201</b>	<b>207</b>	<b>1,720</b>	<b>1,765</b>	<b>346</b>	<b>365</b>	<b>5.5</b>
Kansas .....	126	134	1,740	1,730	219	232	5.9
Michigan .....	374	381	1,900	1,930	711	735	3.4
Minnesota .....	465	465	1,550	1,550	721	721	0.0
Missouri .....	93	92	1,110	1,110	103	102	-1.0
New Mexico .....	326	322	1,960	1,955	639	630	-1.4
New York .....	610	610	1,740	1,770	1,061	1,080	1.8
Ohio .....	270	270	1,540	1,545	416	417	0.2
Oregon .....	123	123	1,665	1,660	205	204	-0.5
Pennsylvania .....	533	532	1,545	1,570	823	835	1.5
Texas .....	433	440	1,705	1,700	738	748	1.4
Utah .....	88	91	1,760	1,780	155	162	4.5
Vermont .....	133	133	1,550	1,560	206	207	0.5
Virginia .....	95	95	1,380	1,430	131	136	3.8
Washington .....	261	265	1,935	1,935	505	513	1.6
Wisconsin .....	1,271	1,272	1,730	1,745	2,199	2,220	1.0
<b>23-State Total .....</b>	<b>8,473</b>	<b>8,506</b>	<b>1,729</b>	<b>1,741</b>	<b>14,653</b>	<b>14,810</b>	<b>1.1</b>

<sup>1</sup> Includes dry cows, excludes heifers not yet fresh. <sup>2</sup> Excludes milk sucked by calves