

A d d e n d u m

Iowa Department of Transportation
Office of Contracts

Date of Letting: March 18, 2014
Date of Addendum: March 5, 2014

B.O.	Proposal ID	Proposal Work Type	County	Project Number	Addendum
107	57-1001-079	PCC PAVEMENT – GRADE & REPLACE	LINN	NHSX-100-1(66)--3H-57 NHSX-100-1(79)--3H-57 NHSX-100-1(84)--3H-57	18MAR107.A03

Notice: Only the bid proposal holders receive this addendum and responsibility for notifying any potential subcontractors or suppliers remains with the proposal holder.

Make the following change to the PLAN for Project No. NHSX-100-1(79)--3H-57:

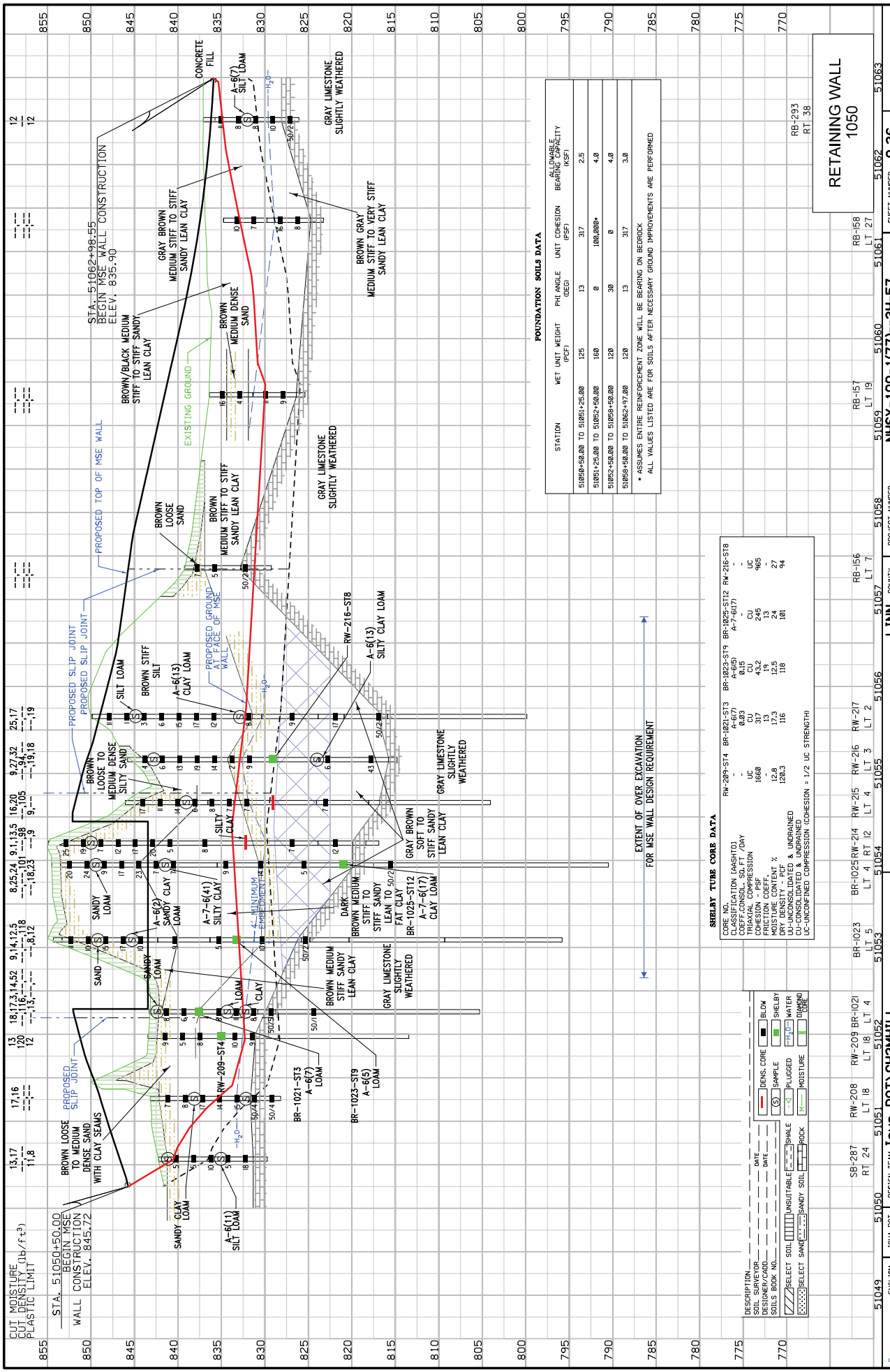
Replace SHEETS Q.36, Q.38, and Q.40 with the attached SHEETS Q.36, Q.38, and Q.40. The SHEETS have been revised to show correct station ranges.

SHEET Q.35 - Q.40:

Change the Project number:

From: NHSX-100-1(77)--3H-57

To: NHSX-100-1(79)--3H-57



FOUNDATION SOILS DATA

STATION	NET UNIT WEIGHT (PCF)	PHASE	UNIT COHESION (PSF)	ALLOWABLE BEARING CAPACITY (KSEF)
51058+50.00 TO 51051+25.00	125	13	317	2.5
51051+25.00 TO 51052+50.00	160	0	100,000*	4.0
51052+50.00 TO 51058+50.00	120	30	0	4.0
51058+50.00 TO 51062+97.00	120	13	317	3.0

* ASSUMES ENTIRE REINFORCEMENT ZONE WILL BE BEARING ON BEDROCK
ALL VALUES LISTED ARE FOR SOILS AFTER NECESSARY GROUND IMPROVEMENTS ARE PERFORMED

SHELBY TUBE CORE DATA

TEST NO.	CLASSIFICATION (ASTM)	COEFF. CONSOL. (SO. FT / DAY)	TRAXIAL COMPRESSION	MOISTURE CONTENT %	UC-UNCONSOLIDATED & UNDRAINED	UC-UNCONSOLIDATED & UNDRAINED	UC-UNCONSOLIDATED & UNDRAINED
BR-1023-S14	BR-1023-S14	0.03	1026	12.8	126.3	116	118
BR-1025-S12	BR-1025-S12	0.15	19	12.5	118	118	118
BR-1025-S13	BR-1025-S13	0.15	13	12.5	118	118	118
BR-1025-S14	BR-1025-S14	0.15	13	12.5	118	118	118
BR-1025-S15	BR-1025-S15	0.15	13	12.5	118	118	118
BR-1025-S16	BR-1025-S16	0.15	13	12.5	118	118	118
BR-1025-S17	BR-1025-S17	0.15	13	12.5	118	118	118
BR-1025-S18	BR-1025-S18	0.15	13	12.5	118	118	118
BR-1025-S19	BR-1025-S19	0.15	13	12.5	118	118	118
BR-1025-S20	BR-1025-S20	0.15	13	12.5	118	118	118
BR-1025-S21	BR-1025-S21	0.15	13	12.5	118	118	118
BR-1025-S22	BR-1025-S22	0.15	13	12.5	118	118	118
BR-1025-S23	BR-1025-S23	0.15	13	12.5	118	118	118
BR-1025-S24	BR-1025-S24	0.15	13	12.5	118	118	118
BR-1025-S25	BR-1025-S25	0.15	13	12.5	118	118	118
BR-1025-S26	BR-1025-S26	0.15	13	12.5	118	118	118
BR-1025-S27	BR-1025-S27	0.15	13	12.5	118	118	118
BR-1025-S28	BR-1025-S28	0.15	13	12.5	118	118	118
BR-1025-S29	BR-1025-S29	0.15	13	12.5	118	118	118
BR-1025-S30	BR-1025-S30	0.15	13	12.5	118	118	118
BR-1025-S31	BR-1025-S31	0.15	13	12.5	118	118	118
BR-1025-S32	BR-1025-S32	0.15	13	12.5	118	118	118
BR-1025-S33	BR-1025-S33	0.15	13	12.5	118	118	118
BR-1025-S34	BR-1025-S34	0.15	13	12.5	118	118	118
BR-1025-S35	BR-1025-S35	0.15	13	12.5	118	118	118
BR-1025-S36	BR-1025-S36	0.15	13	12.5	118	118	118
BR-1025-S37	BR-1025-S37	0.15	13	12.5	118	118	118
BR-1025-S38	BR-1025-S38	0.15	13	12.5	118	118	118
BR-1025-S39	BR-1025-S39	0.15	13	12.5	118	118	118
BR-1025-S40	BR-1025-S40	0.15	13	12.5	118	118	118
BR-1025-S41	BR-1025-S41	0.15	13	12.5	118	118	118
BR-1025-S42	BR-1025-S42	0.15	13	12.5	118	118	118
BR-1025-S43	BR-1025-S43	0.15	13	12.5	118	118	118
BR-1025-S44	BR-1025-S44	0.15	13	12.5	118	118	118
BR-1025-S45	BR-1025-S45	0.15	13	12.5	118	118	118
BR-1025-S46	BR-1025-S46	0.15	13	12.5	118	118	118
BR-1025-S47	BR-1025-S47	0.15	13	12.5	118	118	118
BR-1025-S48	BR-1025-S48	0.15	13	12.5	118	118	118
BR-1025-S49	BR-1025-S49	0.15	13	12.5	118	118	118
BR-1025-S50	BR-1025-S50	0.15	13	12.5	118	118	118
BR-1025-S51	BR-1025-S51	0.15	13	12.5	118	118	118
BR-1025-S52	BR-1025-S52	0.15	13	12.5	118	118	118
BR-1025-S53	BR-1025-S53	0.15	13	12.5	118	118	118
BR-1025-S54	BR-1025-S54	0.15	13	12.5	118	118	118
BR-1025-S55	BR-1025-S55	0.15	13	12.5	118	118	118
BR-1025-S56	BR-1025-S56	0.15	13	12.5	118	118	118
BR-1025-S57	BR-1025-S57	0.15	13	12.5	118	118	118
BR-1025-S58	BR-1025-S58	0.15	13	12.5	118	118	118
BR-1025-S59	BR-1025-S59	0.15	13	12.5	118	118	118
BR-1025-S60	BR-1025-S60	0.15	13	12.5	118	118	118
BR-1025-S61	BR-1025-S61	0.15	13	12.5	118	118	118
BR-1025-S62	BR-1025-S62	0.15	13	12.5	118	118	118
BR-1025-S63	BR-1025-S63	0.15	13	12.5	118	118	118
BR-1025-S64	BR-1025-S64	0.15	13	12.5	118	118	118
BR-1025-S65	BR-1025-S65	0.15	13	12.5	118	118	118
BR-1025-S66	BR-1025-S66	0.15	13	12.5	118	118	118
BR-1025-S67	BR-1025-S67	0.15	13	12.5	118	118	118
BR-1025-S68	BR-1025-S68	0.15	13	12.5	118	118	118
BR-1025-S69	BR-1025-S69	0.15	13	12.5	118	118	118
BR-1025-S70	BR-1025-S70	0.15	13	12.5	118	118	118
BR-1025-S71	BR-1025-S71	0.15	13	12.5	118	118	118
BR-1025-S72	BR-1025-S72	0.15	13	12.5	118	118	118
BR-1025-S73	BR-1025-S73	0.15	13	12.5	118	118	118
BR-1025-S74	BR-1025-S74	0.15	13	12.5	118	118	118
BR-1025-S75	BR-1025-S75	0.15	13	12.5	118	118	118
BR-1025-S76	BR-1025-S76	0.15	13	12.5	118	118	118
BR-1025-S77	BR-1025-S77	0.15	13	12.5	118	118	118
BR-1025-S78	BR-1025-S78	0.15	13	12.5	118	118	118
BR-1025-S79	BR-1025-S79	0.15	13	12.5	118	118	118
BR-1025-S80	BR-1025-S80	0.15	13	12.5	118	118	118
BR-1025-S81	BR-1025-S81	0.15	13	12.5	118	118	118
BR-1025-S82	BR-1025-S82	0.15	13	12.5	118	118	118
BR-1025-S83	BR-1025-S83	0.15	13	12.5	118	118	118
BR-1025-S84	BR-1025-S84	0.15	13	12.5	118	118	118
BR-1025-S85	BR-1025-S85	0.15	13	12.5	118	118	118
BR-1025-S86	BR-1025-S86	0.15	13	12.5	118	118	118
BR-1025-S87	BR-1025-S87	0.15	13	12.5	118	118	118
BR-1025-S88	BR-1025-S88	0.15	13	12.5	118	118	118
BR-1025-S89	BR-1025-S89	0.15	13	12.5	118	118	118
BR-1025-S90	BR-1025-S90	0.15	13	12.5	118	118	118
BR-1025-S91	BR-1025-S91	0.15	13	12.5	118	118	118
BR-1025-S92	BR-1025-S92	0.15	13	12.5	118	118	118
BR-1025-S93	BR-1025-S93	0.15	13	12.5	118	118	118
BR-1025-S94	BR-1025-S94	0.15	13	12.5	118	118	118
BR-1025-S95	BR-1025-S95	0.15	13	12.5	118	118	118
BR-1025-S96	BR-1025-S96	0.15	13	12.5	118	118	118
BR-1025-S97	BR-1025-S97	0.15	13	12.5	118	118	118
BR-1025-S98	BR-1025-S98	0.15	13	12.5	118	118	118
BR-1025-S99	BR-1025-S99	0.15	13	12.5	118	118	118
BR-1025-S100	BR-1025-S100	0.15	13	12.5	118	118	118

RETAINING WALL
1050

PROJECT NUMBER: NBSX-100-1(77)-3H-57
SHEET NUMBER: 51062

PROJECT NUMBER: 51059
COUNTY: LINN
SHEET NUMBER: 51060

PROJECT NUMBER: 51058
COUNTY: LINN
SHEET NUMBER: 51057

PROJECT NUMBER: 51056
COUNTY: LINN
SHEET NUMBER: 51055

PROJECT NUMBER: 51054
COUNTY: LINN
SHEET NUMBER: 51053

PROJECT NUMBER: 51053
COUNTY: LINN
SHEET NUMBER: 51052

PROJECT NUMBER: 51052
COUNTY: LINN
SHEET NUMBER: 51051

PROJECT NUMBER: 51051
COUNTY: LINN
SHEET NUMBER: 51050

PROJECT NUMBER: 51050
COUNTY: LINN
SHEET NUMBER: 51049

PROJECT NUMBER: 51049
COUNTY: LINN
SHEET NUMBER: 51048

PROJECT NUMBER: 51048
COUNTY: LINN
SHEET NUMBER: 51047

PROJECT NUMBER: 51047
COUNTY: LINN
SHEET NUMBER: 51046

PROJECT NUMBER: 51046
COUNTY: LINN
SHEET NUMBER: 51045

PROJECT NUMBER: 51045
COUNTY: LINN
SHEET NUMBER: 51044

PROJECT NUMBER: 51044
COUNTY: LINN
SHEET NUMBER: 51043

PROJECT NUMBER: 51043
COUNTY: LINN
SHEET NUMBER: 51042

PROJECT NUMBER: 51042
COUNTY: LINN
SHEET NUMBER: 51041

PROJECT NUMBER: 51041
COUNTY: LINN
SHEET NUMBER: 51040

PROJECT NUMBER: 51040
COUNTY: LINN
SHEET NUMBER: 51039

PROJECT NUMBER: 51039
COUNTY: LINN
SHEET NUMBER: 51038

PROJECT NUMBER: 51038
COUNTY: LINN
SHEET NUMBER: 51037

PROJECT NUMBER: 51037
COUNTY: LINN
SHEET NUMBER: 51036

PROJECT NUMBER: 51036
COUNTY: LINN
SHEET NUMBER: 51035

PROJECT NUMBER: 51035
COUNTY: LINN
SHEET NUMBER: 51034

PROJECT NUMBER: 51034
COUNTY: LINN
SHEET NUMBER: 51033

PROJECT NUMBER: 51033
COUNTY: LINN
SHEET NUMBER: 51032

PROJECT NUMBER: 51032
COUNTY: LINN
SHEET NUMBER: 51031

PROJECT NUMBER: 51031
COUNTY: LINN
SHEET NUMBER: 51030

PROJECT NUMBER: 51030
COUNTY: LINN
SHEET NUMBER: 51029

PROJECT NUMBER: 51029
COUNTY: LINN
SHEET NUMBER: 51028

PROJECT NUMBER: 51028
COUNTY: LINN
SHEET NUMBER: 51027

PROJECT NUMBER: 51027
COUNTY: LINN
SHEET NUMBER: 51026

PROJECT NUMBER: 51026
COUNTY: LINN
SHEET NUMBER: 51025

PROJECT NUMBER: 51025
COUNTY: LINN
SHEET NUMBER: 51024

PROJECT NUMBER: 51024
COUNTY: LINN
SHEET NUMBER: 51023

PROJECT NUMBER: 51023
COUNTY: LINN
SHEET NUMBER: 51022

PROJECT NUMBER: 51022
COUNTY: LINN
SHEET NUMBER: 51021

PROJECT NUMBER: 51021
COUNTY: LINN
SHEET NUMBER: 51020

PROJECT NUMBER: 51020
COUNTY: LINN
SHEET NUMBER: 51019

PROJECT NUMBER: 51019
COUNTY: LINN
SHEET NUMBER: 51018

PROJECT NUMBER: 51018
COUNTY: LINN
SHEET NUMBER: 51017

PROJECT NUMBER: 51017
COUNTY: LINN
SHEET NUMBER: 51016

PROJECT NUMBER: 51016
COUNTY: LINN
SHEET NUMBER: 51015

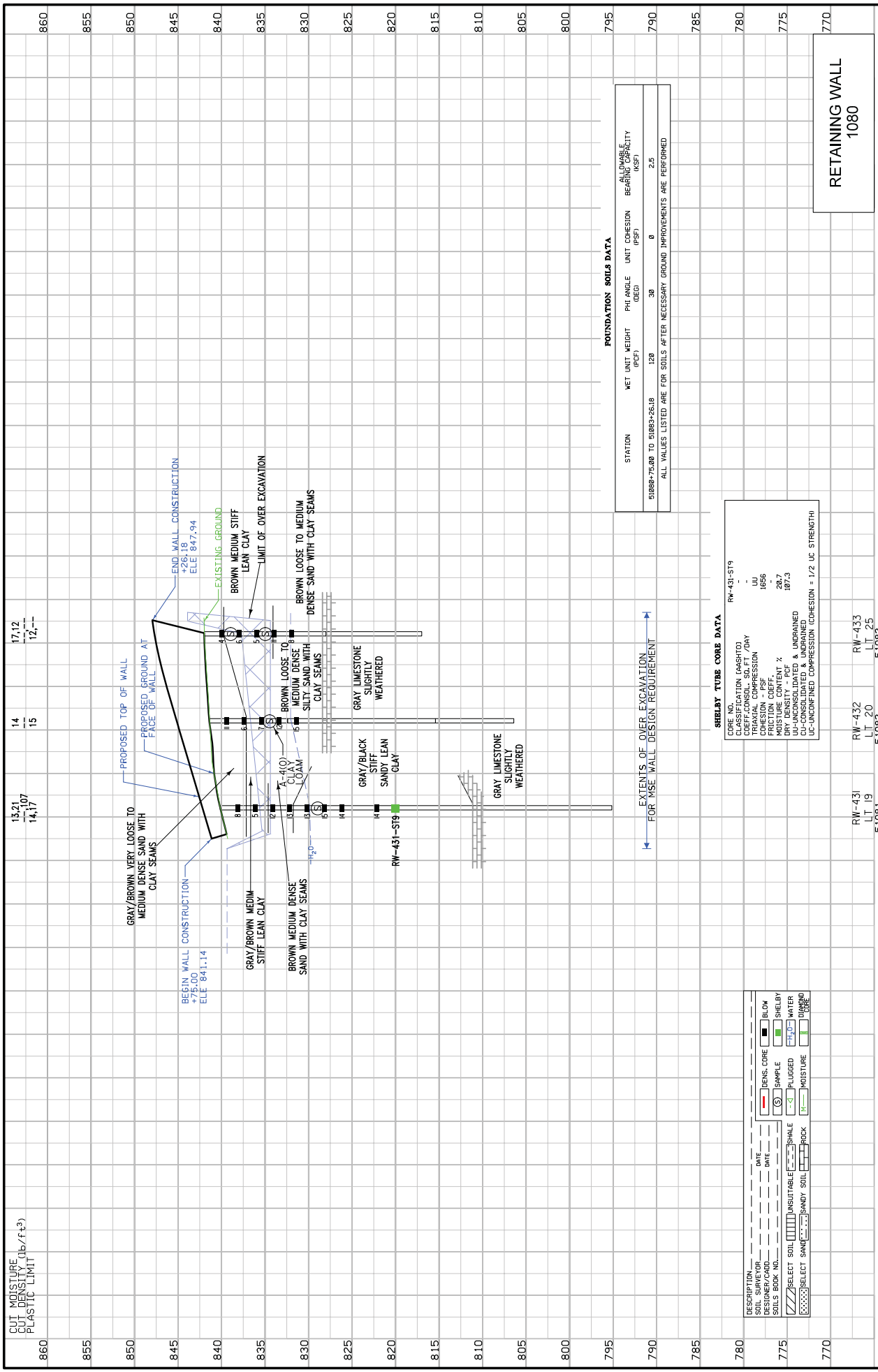
PROJECT NUMBER: 51015
COUNTY: LINN
SHEET NUMBER: 51014

PROJECT NUMBER: 51014
COUNTY: LINN
SHEET NUMBER: 51013

PROJECT NUMBER: 51013
COUNTY: LINN
SHEET NUMBER: 51012

PROJECT NUMBER: 51012
COUNTY: LINN
SHEET NUMBER: 51011

PROJECT NUMBER: 51011
COUNTY: LINN
SHEET NUMBER: 51010



CUT MOISTURE
PLASTIC LIMIT
13.21
14.17
14
15
17.12
17.12

FOUNDATION SOILS DATA

STATION	NET UNIT WEIGHT (pcf)	PHI ANGLE (deg)	UNIT COHESION (psf)	ALLOWABLE BEARING CAPACITY (ksf)
51088-75.00 TO 51083-26.18	120	30	0	2.5

ALL VALUES LISTED ARE FOR SOILS AFTER NECESSARY GROUND IMPROVEMENTS ARE PERFORMED

SHELBY TUBE CORE DATA

CORE NO.	RW-431-ST19
CLASSIFICATION	LAHSTO
COHESION - PSF	1656
MOISTURE CONTENT %	20.7
DRY DENSITY - PCF	107.3
UP-UNCONSOLIDATED & UNDRAINED	
UP-UNCONSOLIDATED COMPRESSION COHESION = 1/2 UC STRENGTH	

DESCRIPTION: _____ DATE: _____

DESIGNER/CARD: _____ DATE: _____

SOILS BOOK NO.: _____

REFLECT SOIL: [] UNSUITABLE [] SHALE [] ROCK

SELECT SAMPLE: [] SANDY SOIL [] ROCK

TESTS: [] BLOW [] DENS. CORE [] SHIMLEY [] WATER [] PLUGGED [] MOISTURE []

PROJECT NUMBER
NHSX-100-1(77)-3H-57

COUNTY
LINN

PROJECT NUMBER
51082

STATION
51081

STATION
51082

STATION
51083

STATION
51084

STATION
51085

STATION
51086

STATION
51087

STATION
51088

STATION
51089

STATION
51090

STATION
51091

STATION
51092

STATION
51093

STATION
51094

STATION
51095

STATION
51096

STATION
51097

STATION
51098

STATION
51099

STATION
51100

STATION
51101

STATION
51102

STATION
51103

STATION
51104

STATION
51105

STATION
51106

STATION
51107

STATION
51108

STATION
51109

STATION
51110

STATION
51111

STATION
51112

STATION
51113

STATION
51114

STATION
51115

STATION
51116

STATION
51117

STATION
51118

STATION
51119

STATION
51120

STATION
51121

STATION
51122

STATION
51123

STATION
51124

STATION
51125

STATION
51126

STATION
51127

STATION
51128

STATION
51129

STATION
51130

STATION
51131

STATION
51132

STATION
51133

STATION
51134

STATION
51135

STATION
51136

STATION
51137

STATION
51138

STATION
51139

STATION
51140

STATION
51141

STATION
51142

STATION
51143

STATION
51144

STATION
51145

STATION
51146

STATION
51147

STATION
51148

STATION
51149

STATION
51150

STATION
51151

STATION
51152

STATION
51153

STATION
51154

STATION
51155

STATION
51156

STATION
51157

STATION
51158

STATION
51159

STATION
51160

STATION
51161

STATION
51162

STATION
51163

STATION
51164

STATION
51165

STATION
51166

STATION
51167

STATION
51168

STATION
51169

STATION
51170

STATION
51171

STATION
51172

STATION
51173

STATION
51174

STATION
51175

STATION
51176

STATION
51177

STATION
51178

STATION
51179

STATION
51180

STATION
51181

STATION
51182

STATION
51183

STATION
51184

STATION
51185

STATION
51186

STATION
51187

STATION
51188

STATION
51189

STATION
51190

STATION
51191

STATION
51192

STATION
51193

STATION
51194

STATION
51195

STATION
51196

STATION
51197

STATION
51198

STATION
51199

STATION
51200