

CATTLE ON FEED

Cattle and calves on feed for slaughter market in Iowa for all feedlots totaled 1,135,000 on August 1, 2013 according to the USDA, National Agricultural Statistics Service, Iowa Field Office. The inventory is down 4 percent from July 1, 2013 and down 2 percent from August 1, 2012. Feedlots with a capacity greater than 1,000 head had 560,000 head on feed, down 3 percent from last month and down 7 percent from last year. Feedlots with a capacity less than 1,000 head had 575,000 head on feed, down 4 percent from last month but up 4 percent from last year.

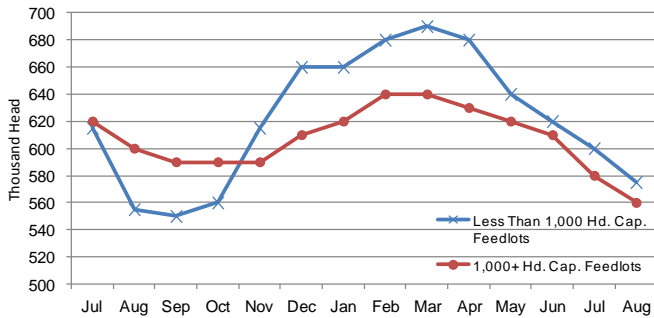
All Cattle on Feed, Iowa

Item	Lots 1,000+ Head	Lots Less than 1,000 Head	All Lots
	(1,000 Head)	(1,000 Head)	(1,000 Head)
Cattle on Feed, July 1, 2013	580	600	1,180
July Placements	48	58	106
July Marketings	64	80	144
July Other Disappearance	4	3	7
Cattle on Feed, August 1, 2013	560	575	1,135

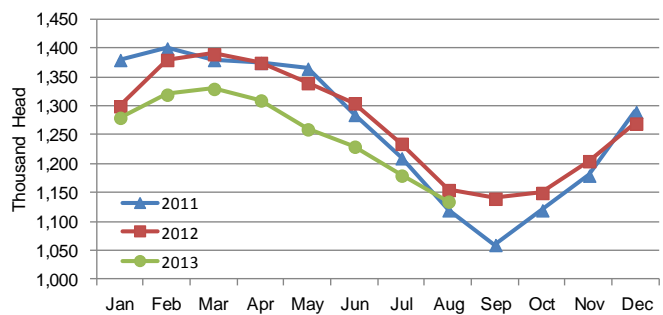
Placements during July totaled 106,000 head, a decrease of 13 percent from last month but an increase of 12 percent from a year ago. Feedlots with a capacity greater than 1,000 head placed 48,000 head, up 2 percent from last month but down 8 percent from last year. Feedlots with a capacity less than 1,000 head placed 58,000 head. This is down 23 percent from last month but up 35 percent from last year.

Marketings for July were 144,000 head, down 13 percent from last month and down 15 percent from last year. Feedlots with a capacity greater than 1,000 head marketed 64,000 head, down 15 percent from last month and down 9 percent from last year. Feedlots with a capacity less than 1,000 head marketed 80,000 head, down 12 percent from last month and down 20 percent from last year. Other disappearance totaled 7,000 head.

Cattle on Feed, Inventory by Feedlot Capacity, Iowa: Current Month & Past 12 Months



Cattle on Feed, Inventory on all Feedlots, Iowa: 2011-2013



Cattle on Feed: Number on Feed, Placements, Marketings, and Other Disappearance by Month, 1,000+ Capacity Feedlots

[Cattle and calves on feed are animals for slaughter market being fed a ration of grain or other concentrates and are expected to produce a carcass that will grade select or better.]

State	Cattle on Feed August 1			Placements during July			Marketings during July			August Disappearance other than Slaughter ¹		
	2012	2013	'13 as % of '12	2012	2013	'13 as % of '12	2012	2013	'13 as % of '12	2012	2013	'13 as % of '12
	(1,000 Head)	(1,000 Head)	(Percent)	(1,000 Head)	(1,000 Head)	(Percent)	(1,000 Head)	(1,000 Head)	(Percent)	(1,000 Head)	(1,000 Head)	(Percent)
Arizona	274	262	96	22	23	105	26	27	104	1	1	100
California	475	515	108	52	57	110	54	55	102	3	2	67
Colorado	940	870	93	155	125	81	180	170	94	5	5	100
Idaho	190	185	97	35	39	111	44	48	109	1	1	100
Iowa	600	560	93	52	48	92	70	64	91	2	4	200
Kansas	2,160	2,000	93	540	440	81	415	435	105	15	15	100
Nebraska	2,230	2,080	93	410	380	93	440	460	105	10	20	200
Oklahoma	320	285	89	68	45	66	66	64	97	2	1	50
South Dakota ...	190	180	95	20	19	95	39	37	95	1	2	200
Texas	2,650	2,490	94	475	460	97	475	520	109	20	10	50
Washington	210	189	90	40	41	103	39	54	138	1	1	100
Other States	417	410	98	53	45	85	65	66	102	2	2	100
United States ...	10,656	10,026	94	1,922	1,722	90	1,913	2,000	105	63	64	102

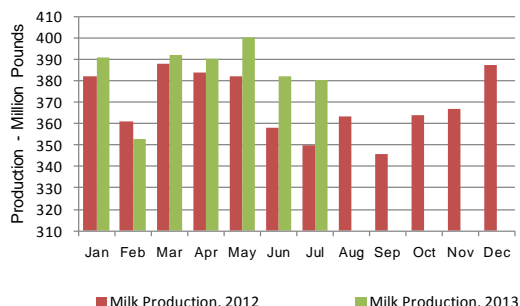
¹ Includes death loss, movement from feedlots to pasture, and shipments to other feedlots for further feeding.

MILK PRODUCTION

Milk Cows and Production: Selected States, July 2012 and 2013

Milk production in Iowa during July 2013 totaled 380 million pounds, up 8.6 percent from July 2012 according to the USDA, National Agricultural Statistics Service – *Milk Production Report*.

Milk Production, Iowa, 2012-2013



State	Milk Production		
	2012	2013	Change from 2012
	(Million Pounds)	(Million Pounds)	(Percent)
Arizona	354	347	-2.0
California	3,498	3,375	-3.5
Colorado	273	288	5.5
Florida	187	191	2.1
Idaho	1,187	1,174	-1.1
Illinois	152	157	3.3
Indiana	301	324	7.6
Iowa	350	380	8.6
Kansas	222	246	10.8
Michigan	743	766	3.1
Minnesota	735	756	2.9
Missouri	110	111	0.9
New Mexico	676	689	1.9
New York	1,113	1,125	1.1
Ohio	429	442	3.0
Oregon	218	216	-0.9
Pennsylvania	860	870	1.2
Texas	779	820	5.3
Utah	171	171	-
Vermont	218	219	0.5
Virginia	137	140	2.2
Washington	526	546	3.8
Wisconsin	2,256	2,321	2.9
23-State Total	15,495	15,674	1.2

All Layers and Egg Production: Selected States, July 2012 and 2013

[Data may not add to totals due to rounding. Data by type of flock not shown for some states to avoid disclosing individual operations, data included in United States totals.]

State	Table egg layers in flocks 30,000 & above		All layers on hand		Eggs per 100 layers		Total egg production		Table egg production	
	2012	2013	2012	2013	2012	2013	2012	2013	2012	2013
	(Thousands)	(Thousands)	(Thousands)	(Thousands)	(Number)	(Number)	(Million eggs)	(Million eggs)	(Million eggs)	(Million eggs)
Alabama	1,539	1,304	9,092	9,055	2,013	2,032	183	184	38	32
Arkansas	3,672	3,616	12,216	12,649	2,137	2,087	261	264	92	88
California	19,207	18,656	19,559	19,019	2,352	2,424	460	461	(D)	(D)
Colorado	3,787	4,218	4,201	4,678	2,523	2,373	106	111	(D)	(D)
Connecticut	2,266	2,311	2,335	2,380	2,441	2,437	57	58	(D)	(D)
Florida	8,044	7,532	8,372	7,884	2,293	2,283	192	180	187	175
Georgia	8,315	8,689	16,698	17,499	2,138	2,137	357	374	194	202
Illinois	4,083	3,768	4,333	4,034	2,308	2,405	100	97	96	93
Indiana	24,355	25,492	25,033	26,463	2,313	2,313	579	612	566	593
Iowa	50,790	51,521	51,752	52,497	2,350	2,343	1,216	1,230	1,200	1,214
Maine	3,452	3,422	3,507	3,477	2,367	2,358	83	82	(D)	(D)
Maryland	2,111	2,050	2,225	2,169	2,382	2,444	53	53	52	51
Michigan	11,773	12,176	11,923	12,328	2,499	2,474	298	305	(D)	(D)
Minnesota	9,807	9,811	10,232	10,265	2,355	2,396	241	246	234	238
Mississippi	1,460	1,579	5,719	5,862	2,098	2,013	120	118	36	37
Missouri	5,484	6,287	6,937	7,797	2,335	2,309	162	180	(D)	(D)
Nebraska	9,072	9,251	9,122	9,301	2,499	2,473	228	230	228	230
New York	4,115	4,139	4,348	4,369	2,507	2,518	109	110	(D)	(D)
North Carolina	5,623	5,586	12,678	12,842	1,988	2,079	252	267	126	134
Ohio	26,955	28,179	27,491	28,640	2,292	2,304	630	660	(D)	(D)
Oregon	2,027	2,129	2,185	2,224	2,609	2,743	57	61	55	60
Pennsylvania	22,570	23,421	23,641	24,562	2,508	2,492	593	612	575	592
South Carolina	3,013	3,079	4,268	4,344	2,226	2,233	95	97	72	74
South Dakota	2,032	2,751	2,072	2,791	2,510	2,544	52	71	52	71
Texas	14,887	14,474	18,670	18,326	2,266	2,303	423	422	(D)	(D)
Utah	3,611	3,952	3,641	3,982	2,362	2,361	86	94	86	94
Virginia	1,180	1,126	2,799	2,792	2,072	2,006	58	56	28	24
Washington	6,601	6,829	6,716	6,944	2,367	2,319	159	161	(D)	(D)
Wisconsin	4,364	4,434	4,969	5,007	2,375	2,377	118	119	(D)	(D)
Other States ¹	12,162	12,321	19,926	20,208	2,198	2,237	438	452	315	325
United States	278,357	284,103	336,660	344,388	2,307	2,313	7,766	7,967	6,719	6,878

(D) Withheld to avoid disclosing data for individual operations. ¹ Includes data for states not published in this table.