

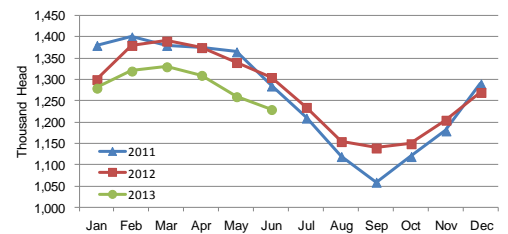
CATTLE ON FEED

Cattle and calves on feed for slaughter market in Iowa for all feedlots totaled 1,230,000 on June 1, 2013 according to the USDA, National Agricultural Statistics Service, Iowa Field Office. The inventory is down 2 percent from May 1, 2013 and down 6 percent from June 1, 2012. Feedlots with a capacity greater than 1,000 head had 610,000 head on feed, down 2 percent from last month and down 5 percent from last year. Feedlots with a capacity less than 1,000 head had 620,000 head on feed, down 3 percent from last month and down 7 percent from last year.

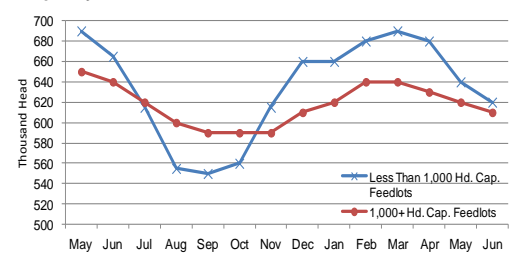
Placements during May totaled 104,000 head, a decrease of 26 percent from last month and down 17 percent from last year. Feedlots with a capacity greater than 1,000 head placed 65,000 head, down 27 percent from last month, but up 10 percent from last year. Feedlots with a capacity less than 1,000 head placed 39,000 head. This is down 24 percent from last month and down 42 percent from last year.

Marketings for May were 129,000 head, down 30 percent from last month and down 16 percent from last year. Feedlots with a capacity greater than 1,000 head marketed 72,000 head, down 26 percent from last month but up 13 percent from last year. Feedlots with a capacity less than 1,000 head marketed 57,000 head, down 35 percent from last month and down 37 percent from last year. Other disappearance totaled 5,000 head.

Cattle on Feed, Inventory on all Feedlots, Iowa: 2011-2013



Cattle on Feed, Inventory by Feedlot Capacity, Iowa: Current Month & Past 12 Months



All Cattle on Feed, Iowa

Item	Lots 1,000+ Head (1,000 Head)	Lots Less than 1,000 Head (1,000 Head)	All Lots (1,000 Head)
Cattle on Feed, May 1, 2013	620	640	1,260
May Placements	65	39	104
May Marketings	72	57	129
May Other Disappearance	3	2	5
Cattle on Feed, June 1, 2013	610	620	1,230

Cattle on Feed: Number on Feed, Placements, Marketings, and Other Disappearance by Month, 1,000+ Capacity Feedlots

[Cattle and calves on feed are animals for slaughter market being fed a ration of grain or other concentrates and are expected to produce a carcass that will grade select or better.]

State	Cattle on Feed June 1			Placements during May			Marketings during May			May Disappearance other than Slaughter ¹		
	2012 (1,000 Head)	2013 (1,000 Head)	'13 as % of '12 (Percent)	2012 (1,000 Head)	2013 (1,000 Head)	'13 as % of '12 (Percent)	2012 (1,000 Head)	2013 (1,000 Head)	'13 as % of '12 (Percent)	2012 (1,000 Head)	2013 (1,000 Head)	'13 as % of '12 (Percent)
Arizona	282	272	96	36	25	69	29	27	93	1	1	100
California	490	510	104	70	77	110	53	54	102	2	3	150
Colorado	1,020	960	94	180	170	94	170	150	88	20	20	100
Idaho	210	205	98	29	41	141	32	45	141	2	1	50
Iowa	640	610	95	59	65	110	64	72	113	5	3	60
Kansas	2,090	2,060	99	445	430	97	415	410	99	20	20	100
Nebraska	2,360	2,320	98	460	460	100	540	510	94	20	20	100
Oklahoma	320	310	97	81	78	96	54	61	113	2	2	100
South Dakota ...	230	215	93	35	39	111	45	45	100	5	4	80
Texas	2,770	2,630	95	580	570	98	500	465	93	20	15	75
Washington	220	214	97	43	40	93	46	45	98	1	1	100
Other States	445	430	97	66	54	82	69	64	93	2	10	500
United States ...	11,077	10,736	97	2,084	2,049	98	2,017	1,948	97	100	100	100

(D) Withheld to avoid disclosing data for individual operations.

¹ Includes death loss, movement from feedlots to pasture, and shipments to other feedlots for further feeding.

Complete reports can be found under **Publications** on the USDA NASS website at www.nass.usda.gov.

MILK PRODUCTION

Milk production in Iowa during May 2013 totaled 393 million pounds, up 3 percent from May 2012 according to the USDA, National Agricultural Statistics Service – *Milk Production Report*.

Milk Production: Selected States, May 2012 and 2013

State	Milk Production		
	2012	2013	Change from 2012
	(Million Pounds)	(Million Pounds)	(Percent)
Arizona	418	410	-1.9
California	3,744	3,726	-0.5
Colorado	278	282	1.4
Florida	218	218	-
Idaho	1,172	1,175	0.3
Illinois	171	174	1.8
Indiana	330	347	5.2
Iowa	382	393	2.9
Kansas	236	255	8.1
Michigan	765	784	2.5
Minnesota	777	791	1.8
Missouri	131	128	-2.3
New Mexico	722	714	-1.1
New York	1,153	1,177	2.1
Ohio	470	478	1.7
Oregon	223	222	-0.4
Pennsylvania	914	935	2.3
Texas	847	840	-0.8
Utah	170	166	-2.4
Vermont	223	231	3.6
Virginia	151	155	2.6
Washington	550	558	1.5
Wisconsin	2,339	2,366	1.2
23-State Total	16,384	16,525	0.9

MONTHLY PRICES

Prices Received by Farmers

IOWA	June 2012	May 2013	June ¹ 2013
	-----Dollars-----		
Corn	6.37	7.06	7.20
Soybeans	13.70	4.90	15.10
Oats	3.78	4.66	4.60
All Hay, baled	137.00	252.00	270.00
Alfalfa Hay, baled	142.00	275.00	280.00
Other Hay, baled	93.00	174.00	180.00
Milk Cows ²	(NA)	(NA)	(NA)
Milk (whls)	17.10	20.40	20.60

UNITED STATES	June 2012	May 2013	June ¹ 2013
	-----Dollars-----		
Corn	6.37	6.97	7.02
Soybeans	13.90	14.90	15.10
Oats	3.80	4.45	4.04
All Hay, baled	183.00	203.00	199.00
Alfalfa Hay, baled	201.00	221.00	220.00
Other hay, baled	133.00	154.00	147.00
Hogs, all	70.20	68.60	72.50
Brw & Gilts	71.00	69.10	73.10
Sows	51.80	55.20	58.40
Beef Cattle	121.00	124.00	122.00
Cows	86.00	80.60	80.10
Strs & Hfrs	124.00	128.00	126.00
Calves	166.00	151.00	146.00
Milk Cows ²	(NA)	(NA)	(NA)
Milk (whls)	16.30	19.70	19.70
Eggs (mkt) ³	0.907	1.170	0.929

Prices Index Summary, United States

PRICES RECEIVED INDEX	June 2012	May 2013	June 2013	June 2012	May 2013	June 2013
	1910-14=100			1990-92=100		
All Products	1159	1242	1271	183	196	200
Crops	1065	1111	1151	215	224	232
Food grains	710	782	757	224	247	239
Feed grains & hay	958	1066	1062	269	299	298
Oilseeds	1364	1404	1427	249	256	260
Lvstk	1163	1306	1287	152	170	168
Meat Animals	1648	1661	1660	162	163	163
Dairy Prod.	1003	1212	1212	125	151	151
Poultry & eggs	447	571	545	159	203	194

PRICES PAID INDEX	June 2012	May 2013	June 2013	June 2012	May 2013	June 2013
	1910-14=100			1990-92=100		
Prices Paid	2844	2928	2943	214	220	221
Production	2204	2269	2283	227	234	235
Feed	1224	1313	1337	251	269	274
Livestock & pltry	2171	1968	1958	170	154	153
Seeds	3606	3776	3776	364	381	381
Fertilizer	1263	1252	1282	345	342	350
Chemicals	947	957	957	153	155	155
Fuels	2598	2718	2695	337	352	349
Ratio	(NA)	(NA)	(NA)	86	89	90
Parity Ratio ¹	41	42	43	(NA)	(NA)	(NA)

(NA) Not available.

¹ Ratio of index of prices received to index of prices paid for commodities and services, interest, taxes, and farm wage rates.

(NA) Not available.

¹ Preliminary

² Animals sold for dairy herd replacement only. Prices estimated in January, April, July, and October.

³ Eggs are mid-month prices.