



USDA National Agricultural Statistical Service, Iowa Field Office • 210 Walnut, Room 833 • Des Moines, Iowa 50309-2195
Phone 515-284-4340 • 1-800-772-0825 • Fax 515-284-4342 • nass-ia@nass.usda.gov
In Cooperation with the Iowa Department of Agriculture and Land Stewardship

Issued June 17, 2013 Vol 13-15

For the week ending June 16, 2013

Media Contact: Greg Thessen

Iowa farmers struggled to get the remaining cropland planted during the week ending June 16, 2013, according to the USDA, National Agricultural Statistics Service. Intermittent rainfall throughout the week didn't permit enough drying, and some farmers resorted to planting in less than ideal conditions. Statewide there was an average of 2.8 days suitable for fieldwork. East Central and South East Iowa had the most days suitable for fieldwork, while North West and North Central Iowa had the least amount of days suitable.

The surplus rating of soil moisture levels dropped this week, but moisture levels remained mostly in the adequate and surplus categories. Topsoil moisture levels rated 0 percent very short, 0 percent short, 54 percent adequate and 46 percent surplus. Subsoil moisture levels rated 0 percent very short, 2 percent short, 64 percent adequate and 34 percent surplus.

Ninety-four percent of Iowa's corn crop was in the ground, 2 percentage points higher than last week but normally all corn is planted by this time. Eighty-nine percent of the corn crop has emerged, 10 percentage points below the five-year average. Corn condition was reported at 4 percent very poor, 12 percent poor, 34 percent fair, 42 percent good and 8 percent excellent. Farmers have planted 77 percent of the soybean crop, an advancement of 17 percentage points from last week, but planting is still lower than the normal 96 percent. Soybean emergence was 56 percent complete; well behind both last year's 97 percent, and the five-year average of 91 percent. The first soybean condition rating of the year reflected 4 percent very poor, 10 percent poor, 36 percent fair, 42 percent good and 8 percent excellent. Thirty-six percent of the oat crop was headed, and the crop condition rated 1 percent very poor, 5 percent poor, 26 percent fair, 57 percent good and 11 percent excellent. It was reported high winds in some areas caused lodging in oats.

The first cutting of alfalfa hay was 31 percent complete, compared to last year when the first cutting was finished, and the second cutting was 27 percent complete. Farmers were waiting for drier conditions to cut hay. Hay condition was rated at 1 percent very poor, 3 percent poor, 29 percent fair, 52 percent good and 15 percent excellent. Pasture and range conditions rated 1 percent very poor, 5 percent poor, 24 percent fair, 48 percent good and 22 percent excellent.

Crop Conditions as of June 16, 2013

Item	Very Poor	Poor	Fair	Good	Excellent
	(Percent)	(Percent)	(Percent)	(Percent)	(Percent)
Corn	4	12	34	42	8
Soybeans	4	10	36	42	8
Oats	1	5	26	57	11
Hay, all	1	3	29	52	15
Pasture & Range	1	5	24	48	22

Field Work and Crop Progress as of June 16, 2013

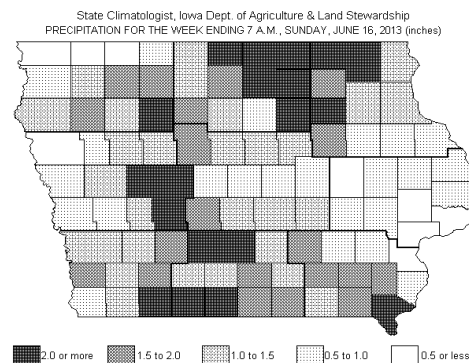
Item	Districts										State	Last Week	Last Year	5-yr Avg
	NW	NC	NE	WC	C	EC	SW	SC	SE					
	(Percent)	(Percent)	(Percent)	(Percent)	(Percent)	(Percent)	(Percent)	(Percent)	(Percent)	(Percent)	(Percent)	(Percent)	(Percent)	(Percent)
Corn planted	99	84	89	99	93	99	98	94	98	94	92	100	100	
Corn emerged	97	75	80	96	88	96	94	85	88	89	81	100	99	
Soybeans planted	77	52	72	85	76	94	85	70	85	77	60	100	96	
Soybeans emerged	62	27	45	66	50	75	71	53	55	56	39	97	91	
Oats headed	30	33	30	26	45	44	46	33	43	36	16	93	53	
Hay, alfalfa - 1st cutting	35	26	37	31	41	45	20	19	31	31	10	100	64	

Days Suitable & Soil Moisture Condition as of June 16, 2013

Item	Districts										State	Last Week	Last Year
	NW	NC	NE	WC	C	EC	SW	SC	SE				
	(Days)	(Days)	(Days)	(Days)	(Days)	(Days)	(Days)	(Days)	(Days)	(Days)	(Days)	(Days)	(Days)
Days suitable	1.9	1.5	2.8	2.7	2.9	4.6	2.7	2.6	4.3	2.8	1.7	5.4	
	(Percent)	(Percent)	(Percent)	(Percent)	(Percent)	(Percent)	(Percent)	(Percent)	(Percent)	(Percent)	(Percent)	(Percent)	
Topsoil moisture													
Very short	0	0	0	0	0	0	0	0	0	0	0	14	
Short	0	0	0	0	0	0	0	0	0	0	0	40	
Adequate	61	53	60	57	45	62	53	44	51	54	42	45	
Surplus	39	47	40	43	55	38	47	56	49	46	58	1	
Subsoil moisture													
Very short	0	0	0	0	0	0	0	0	0	0	0	18	
Short	5	1	0	3	1	1	0	1	2	2	2	43	
Adequate	74	62	61	69	57	61	68	62	62	64	60	38	
Surplus	21	37	39	28	42	38	32	37	36	34	38	1	

IOWA PRELIMINARY WEATHER SUMMARY Provided by Harry Hillaker, State Climatologist Iowa Department of Agriculture & Land Stewardship

Slightly warmer weather prevailed over the past reporting week in Iowa. The period began with temperatures slightly below normal on Sunday (9th) and Monday (10th) with daytime highs mostly in the 70's. However, above normal temperatures prevailed for the remainder of the week except on Friday (14th) when widespread cloudiness reduced daytime readings. Temperature extremes for the week ranged from a high of 93 degrees at Keokuk on Wednesday afternoon to morning lows of 52 degrees at Sibley on Thursday and Elkader on Friday. Temperatures for the week as a whole averaged 1.7 degrees above normal. Light rain fell over most of Iowa on Sunday (9th) with dry weather statewide on Monday and Tuesday. Thunderstorms brought rain to about the northern two-thirds of the state on Wednesday with locally heavy rain and severe weather over north central and northeast Iowa. Thursday was mostly dry with scattered light showers over western Iowa. Rain fell nearly statewide on Friday and Saturday with the heaviest rains falling over west central Iowa on Friday evening. There were a numerous reports of high winds and hail over western Iowa Friday night and a few over the southeast corner of the state on Saturday night. Weekly rain totals varied from just 0.08 inches at Lowden in Cedar County to 6.00 inches at Coon Rapids in Carroll County. The statewide average precipitation was 1.38 inches while normal for the week is 1.19 inches.



Weather Summary For National Agricultural Statistics Service, Iowa Field Office.
For the week ending: 7:00 am Sunday, June 16, 2013, Prepared by AWIS, Inc.

Station	Current Week						Since April 1			
	Temperature				Precipitation		Precipitation		GDD Base 50F	
	High	Low	Avg.	DFN	Total	DFN	Total	DFN	Total	DFN
North West District										
Estherville	86	54	68	2	0.52	-0.46	12.39	4.09	535	-47
Sioux Center	87	55	71	2	0.55	-0.51	17.79	9.53	642	-150
Spencer	88	54	69	2	1.28	0.37	16.18	7.85	565	-74
Spirit Lake	87	53	69	2	0.12	-0.90	8.57	0.73	549	-82
North Central District										
Britt	87	56	69	-2	1.43	0.38	18.77	9.85	513	-103
Dakota City	87	57	70	1	1.72	0.65	17.98	8.81	587	-118
Mason City	87	53	69	2	2.28	1.21	18.70	9.24	560	-63
Osage	85	58	68	0	2.91	1.88	24.41	14.93	508	-78
North East District										
Decorah	84	53	69	1	3.08	2.07	22.06	12.56	628	-19
Dubuque	82	54	69	2	0.72	-0.26	17.21	6.99	624	-3
Elkader	83	51	67	-2	1.03	0.12	19.38	10.17	502	-111
Fayette	85	56	69	2	1.43	0.45	20.38	10.67	552	8
Waterloo	86	57	71	2	1.83	0.78	20.57	10.88	663	-22
West Central District										
Carroll	86	58	70	2	2.81	1.62	16.90	6.65	603	-83
Castana	84	56	69	-2	0.56	-0.52	15.30	5.91	581	-230
Guthrie Center	87	58	70	2	2.68	1.49	22.01	11.85	636	-77
Harlan	86	56	70	0	1.35	0.30	17.77	7.94	603	-75
Jefferson	86	58	70	1	2.41	1.22	20.27	10.02	611	-84
Logan	87	55	70	0	0.67	-0.38	12.83	3.05	669	-94
Rockwell City	86	58	70	-1	1.40	0.35	18.58	9.32	593	-81
Sac City	85	56	68	-1	1.40	0.28	16.58	7.01	534	-84
Sioux City	87	54	70	0	0.50	-0.36	11.84	3.80	663	-88
Central District										
Boone	86	53	70	1	1.13	-0.13	18.90	8.26	608	-87
Des Moines	91	59	74	3	1.47	0.40	16.14	6.73	846	46
Grundy Center	87	57	70	3	0.78	-0.27	21.85	12.11	609	-14
Marshalltown	88	58	71	3	0.69	-0.43	23.35	13.60	691	7
Newton	89	57	70	1	1.06	-0.04	19.36	9.43	648	-137
Perry	88	56	71	2	1.69	0.51	18.26	8.28	638	-51
Toledo	88	57	70	2	0.75	-0.33	22.94	12.84	602	-24
East Central District										
Cedar Rapids	88	54	71	2	0.59	-0.49	17.13	7.83	728	-10
Davenport	92	56	72	2	0.13	-0.92	15.56	6.32	793	-32
Iowa City	89	57	72	2	0.64	-0.41	17.13	7.06	785	-110
Lowden	91	58	71	3	0.08	-1.04	18.60	8.14	708	29
Maquoketa	89	56	69	1	0.74	-0.38	13.41	3.91	632	-16
Muscatine	89	56	71	0	0.30	-0.70	16.80	7.12	757	-98
South West District										
Atlantic	89	58	71	2	0.82	-0.16	14.01	4.89	636	-110
Clarinda	90	58	71	2	1.42	0.37	16.04	5.60	712	-22
Glenwood	88	56	71	-1	1.57	0.45	15.49	5.23	689	-139
Red Oak	90	57	72	1	1.40	0.15	17.23	6.52	733	-51
Sidney	91	58	72	1	0.35	-0.63	12.84	3.22	729	-117
South Central District										
Allerton	88	60	70	1	2.12	1.11	20.36	10.68	649	-86
Beaconsfield	87	58	69	-1	2.07	1.07	18.82	9.30	630	-66
Chariton	88	54	70	1	1.79	0.67	18.56	8.48	617	-42
Indianola	91	56	71	2	1.62	0.50	17.07	6.88	698	22
Lamoni	89	59	71	1	1.96	1.05	16.93	6.80	770	8
South East District										
Bloomfield	89	61	73	2	1.11	0.17	18.50	8.60	760	-10
Burlington	92	60	73	3	0.78	-0.15	17.44	8.06	861	-19
Ottumwa	89	58	71	0	1.45	0.60	20.05	10.85	770	-95
Washington	89	53	71	-2	0.58	-0.33	16.77	7.53	731	-79

⁰ Precipitation (rain, melted snow or ice) in inches. Precipitation Days = Days with precipitation of 0.01 inch or more. Air Temperatures in Degrees Fahrenheit. Copyright 2013: AWIS, Inc. All Rights Reserved.