

# A d d e n d u m

Iowa Department of Transportation  
Office of Contracts

Date of Letting: August 20, 2013  
Date of Addendum: July 18, 2013

<b>B.O.</b>	<b>Proposal ID</b>	<b>Proposal Work Type</b>	<b>County</b>	<b>Project Number</b>	<b>Addendum</b>
501	56-0611-184	LANDSCAPING	LEE	NHSN-061-1(184)--2R-56	16AUG501.A01

---

Notice: Only the bid proposal holders receive this addendum and responsibility for notifying any potential subcontractors or suppliers remains with the proposal holder.

---

Make the following change to the Plan Sheet C.2:

Tab. 100-20 PLANTING QUANTITIES LISTING:

Replace Tab. 100-20 PLANTING QUANTITIES LISTING with the attached Tab. 100-20 PLANTING QUANTITIES LISTING.

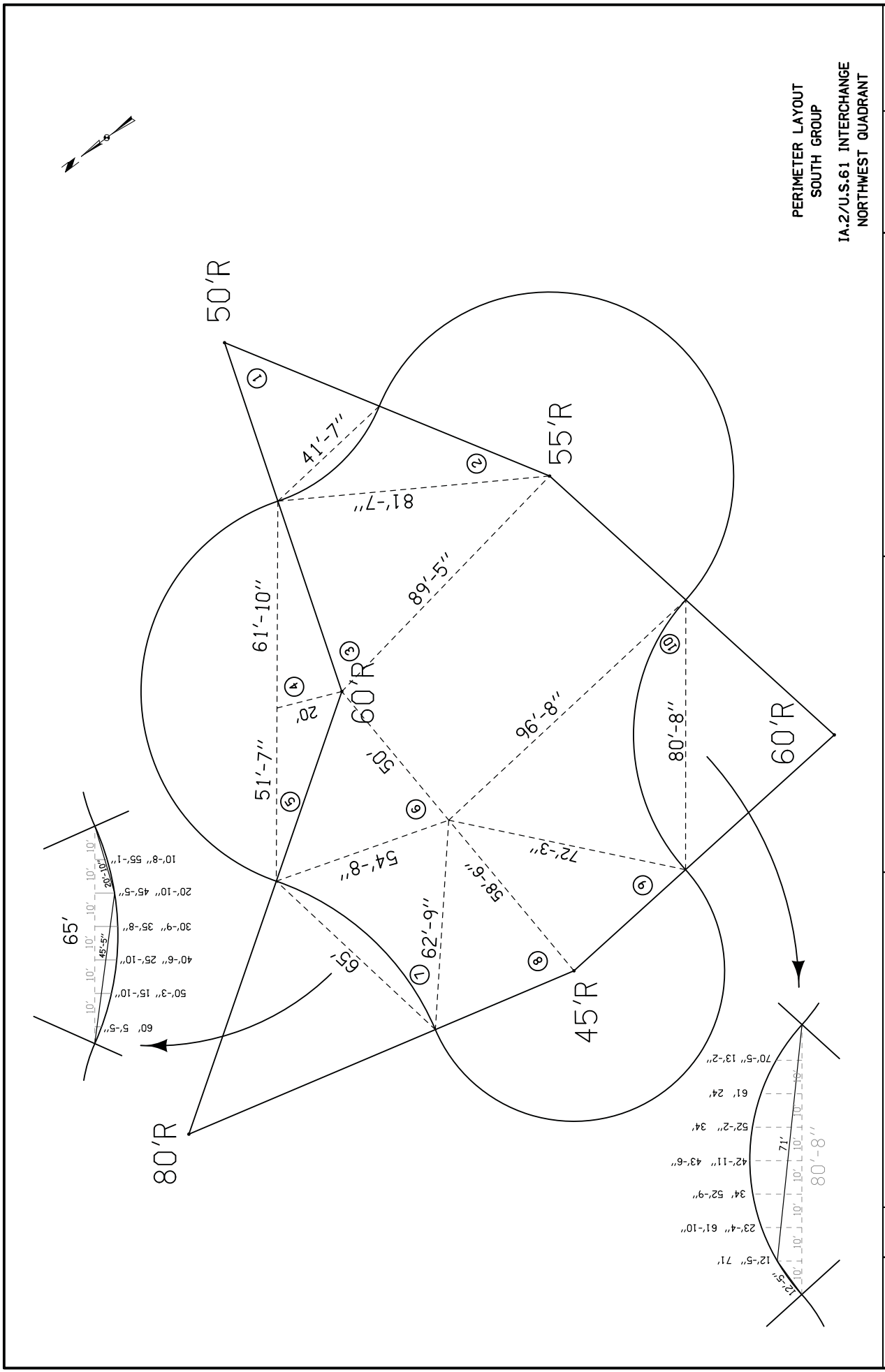
Make the following change to the Plans:

Replace Plan Sheets U.2, U.3, U.4, U.5, U.7, U.8, U.9, U.10 and U.11 with the attached Plan Sheets U.2, U.3, U.4, U.5, U.7, U.8, U.9, U.10 and U.11.

**PLANTING QUANTITIES LISTING**

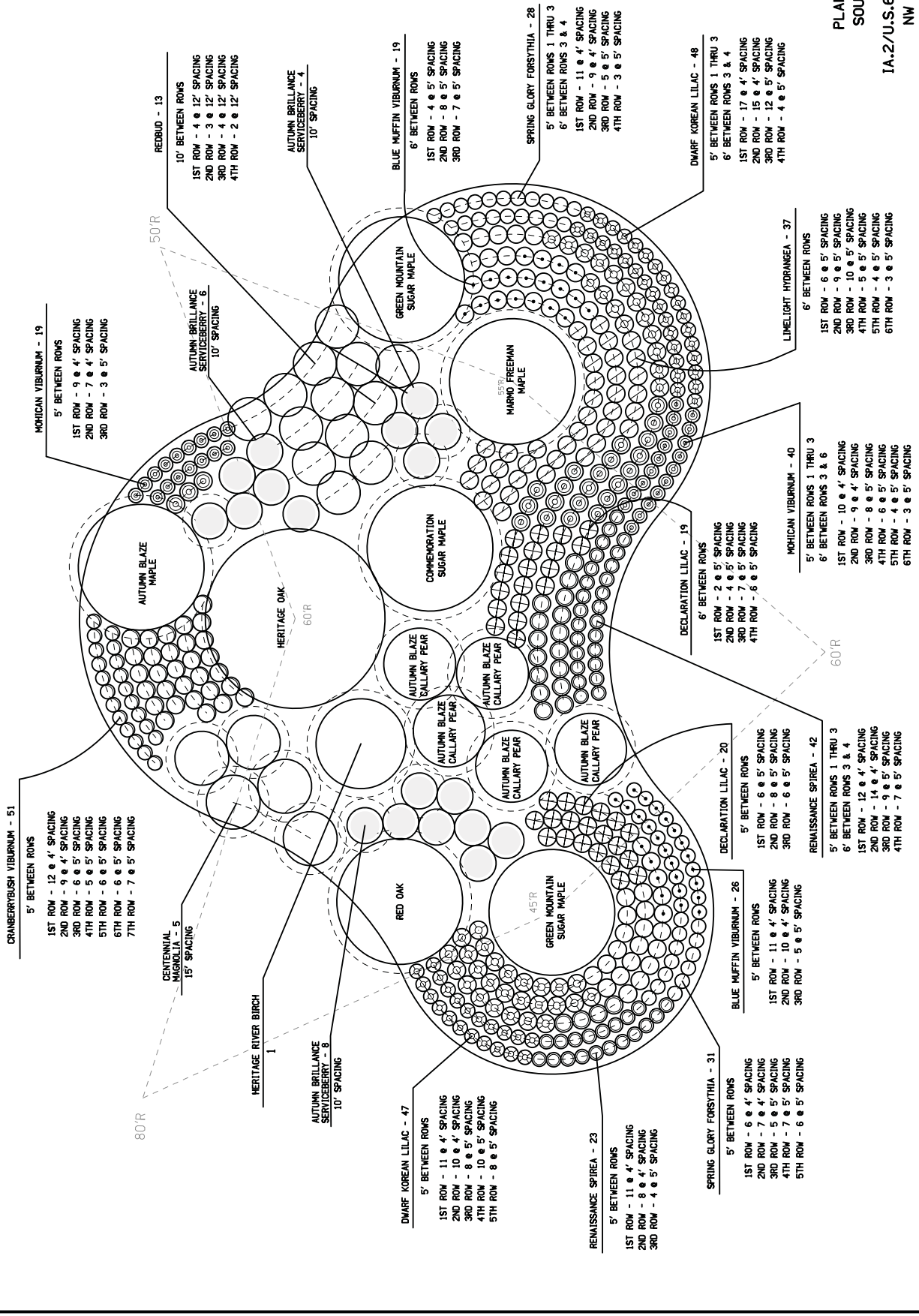
This Data Entry Sheet fills Tab 100-20 effective 08-01-08

No.	Code	Botanical Names	Common Name	Size	Unit	Total	As Built Quan.
TREES							
1	A-1	Acer saccharum 'Commemoration' P.P. 5079	Commemoration Sugar Maple	2" B-B	Each	2	
2	A-2	Acer saccharum 'Green Mountain'	Green Mountain Sugar Maple	2" B-B	Each	19	
3	A-3	Acer x freemanii 'Jeffersred'	Autumn Blaze Maple	2" B-B	Each	3	
4	A-4	Acer x freemanii 'Marmo'	Marmo Freeman Maple	2" B-B	Each	3	
5	A-5	Amelanchier x grandiflora 'Autumn Brilliance'	Autumn Brilliance Serviceberry	5' B-B Clump	Each	56	
6	B-1	Betula nigra 'Cully'	Heritage' River Birch	#25 Cont. Clump 8'	Each	3	
7	C-1	Cercis canadensis	Eastern Redbud	1" #10 Cont.	Each	21	
8	C-2	Chionanthus virginicus	White Fringe Tree	#7 Cont. Min. 4'	Each	12	
9	M-1	Magnolia kobus var. stellata 'Centennial'	Centennial Magnolia	#20 Cont. 4'	Each	5	
10	M-2	Malus 'Adams'	Adams Crabapple	1.5" B-B	Each	11	
11	M-3	Malus 'Robinson'	Robinson Crabapple	2" B-B	Each	20	
12	M-4	Malus 'Snowdrift'	Snowdrift Crabapple	1.5" B-B	Each	4	
13	P-1	Pyrus calleryana 'Autumn Blaze'	Autumn Blaze Callery Pear	#20 Cont. 1.5"	Each	10	
14	Q-1	Quercus bicolor	Swamp White Oak	2" B-B	Each	5	
15	Q-2	Quercus coccinea	Scarlet Oak	2" B-B	Each	15	
16	Q-3	Quercus imbricaria	Shingle Oak	2" B-B	Each	6	
17	Q-4	Quercus macrocarpa	Bur Oak	2" B-B	Each	18	
18	Q-5	Quercus rubra	Red Oak	2" B-B	Each	27	
19	Q-6	Quercus x macedaniellii 'Clemons' P.P.11,431	Heritage Oak	2" B-B	Each	16	
20	S-1	Syringa reticulata 'Ivory Silk'	Ivory Silk Japanese Tree Lilac	#25 Cont. 1.75"	Each	16	
SHRUBS							
21	F-1	Forsythia x intermedia 'Spring Glory'	Spring Glory Forsythia	#5 Cont.	Each	128	
22	H-1	Hydrangea paniculata 'Limelight' P.P.12,874	Limelight Hydrangea	#5 Cont.	Each	203	
23	S-2	Spirea x vanhouttei 'Renaissance'	Renaissance Spirea	#5 Cont.	Each	260	
24	S-3	Syringa meyeri 'Pablin'	Dwarf Korean Lilac	#5 Cont.	Each	149	
25	S-4	Syringa 'Declaration'	Declaration Lilac	#5 Cont.	Each	102	
26	S-5	Syringa vulgaris	Common Purple Lilac	#5 Cont.	Each	41	
27	S-6	Syringa vulgaris	Common Purple Lilac*	3'	Each	315	
28	S-7	Syringa vulgaris var. alba	Common White Lilac*	3'	Each	315	
29	S-8	Viburnum dentatum	Arrowwood Viburnum*	3'	Each	1062	
30	V-1	Viburnum dentatum 'Christom'	Blue Muffin Arrowwood Viburnum	#5 Cont.	Each	201	
31	V-2	Viburnum dilatatum 'Henneke'	Cardinal Candy Viburnum	#5 Cont.	Each	27	
32	V-3	Viburnum lantana 'Mohican'	Mohican Viburnum*	2'	Each	534	
33	V-4	Viburnum lantana 'Mohican'	Mohican Viburnum	#5 Cont.	Each	195	
34	V-5	Viburnum trilobum	American Cranberrybush Viburnum	#5 Cont.	Each	106	
				* For living snowfence shrub rows Cont. = Container Grown			



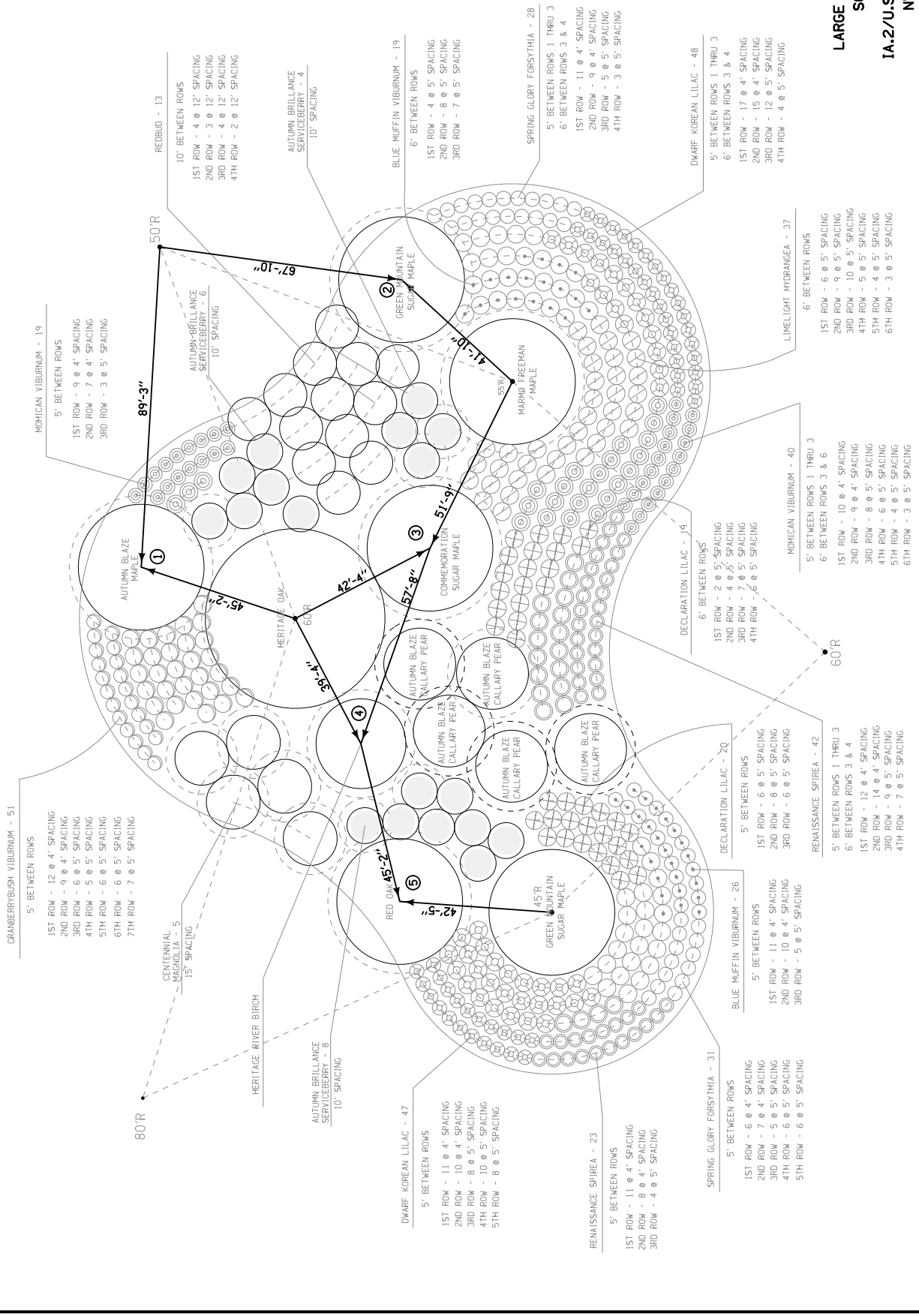
PERIMETER LAYOUT  
 SOUTH GROUP  
 1A.2/U.S-61 INTERCHANGE  
 NORTHWEST QUADRANT

ENGLISH	DATE	DESIGN TEAM	Jim Carpenter	PROJECT NUMBER	NHSN-61-1(184)-2R-56	SHEET NUMBER	U.1
7/17/2013	7/17/2013	Jcarpen		LEE COUNTY			
p:\projects\184\1013\Roadside\56061184\56061184_U1\PrintFile.rsd							



PLANT LAYOUT  
SOUTH GROUP  
IA.2/U.S.61 INTERCHANGE  
NW QUADRANT

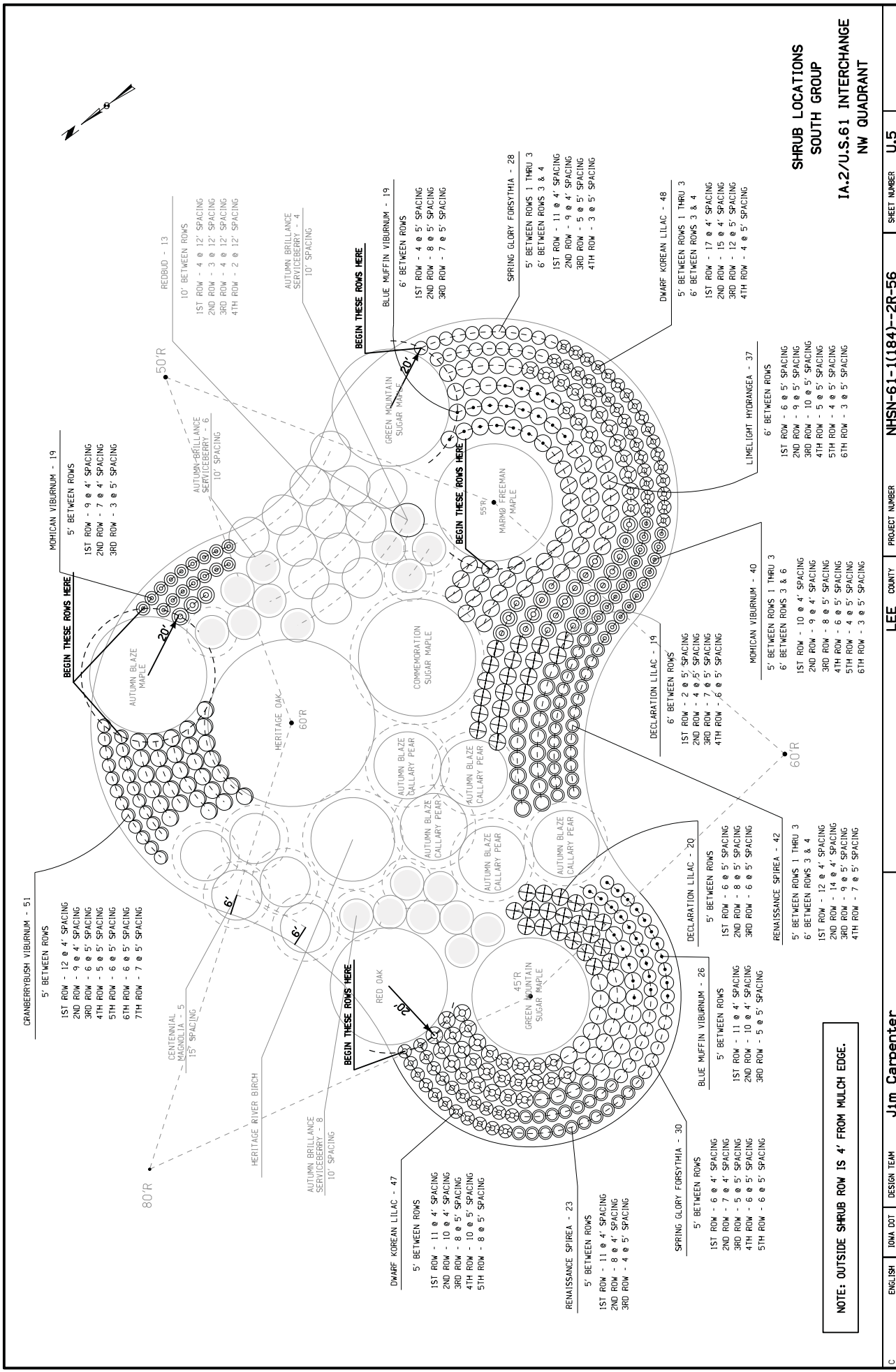
ENGLISH	7/17/2013	DESIGN TEAM	Jim Carpenter	PROJECT NUMBER	NHSN-61-1(184)-2R-56	SHEET NUMBER	U.2
C	9:22:55 AM	OWNER	Jcarpen	COUNTY	LEE	PROJECT NUMBER	NHSN-61-1(184)-2R-56

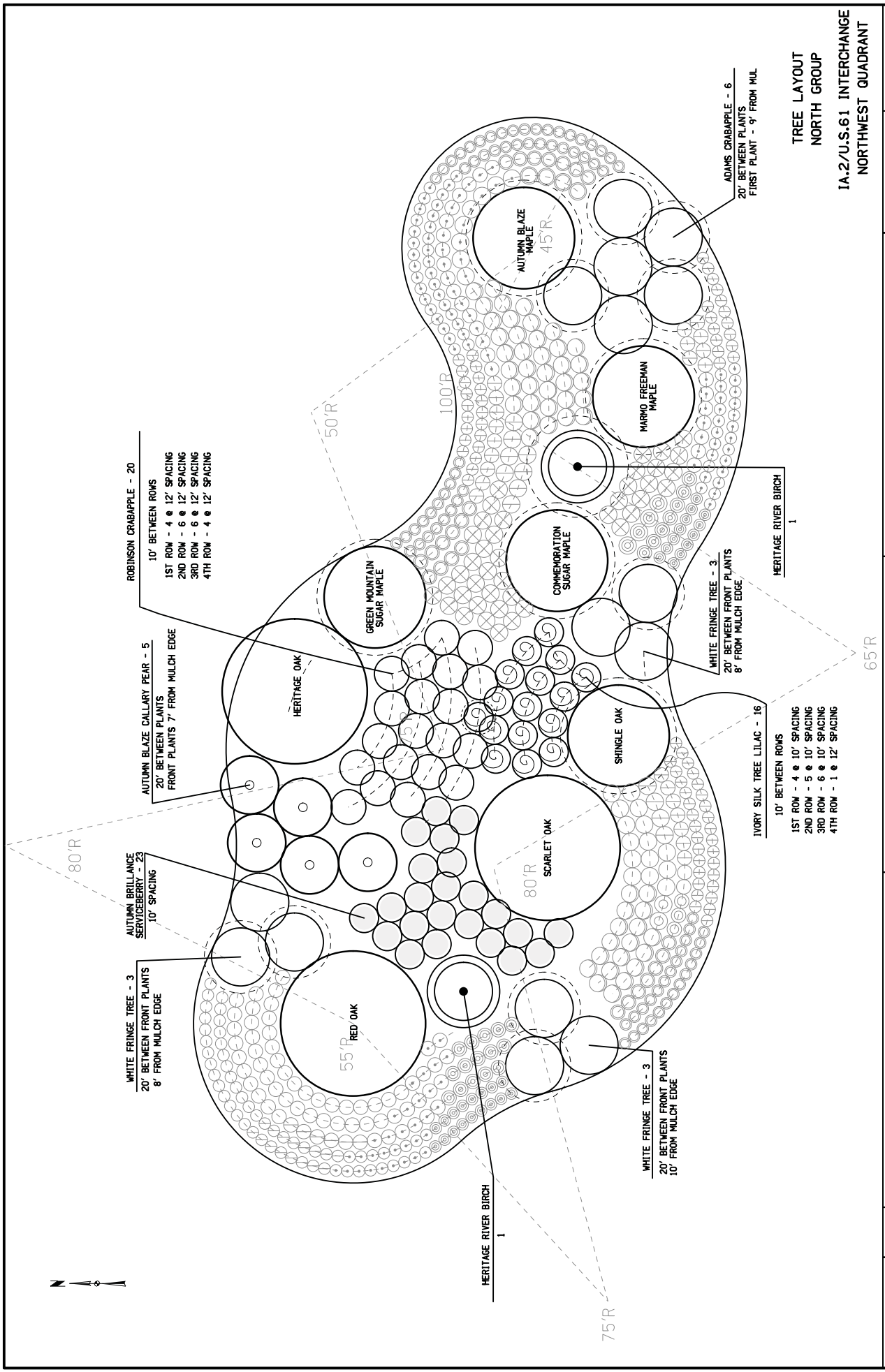


**LARGE TREE LOCATIONS  
SOUTH GROUP  
IA.2/U.S.61 INTERCHANGE  
NW QUADRANT**







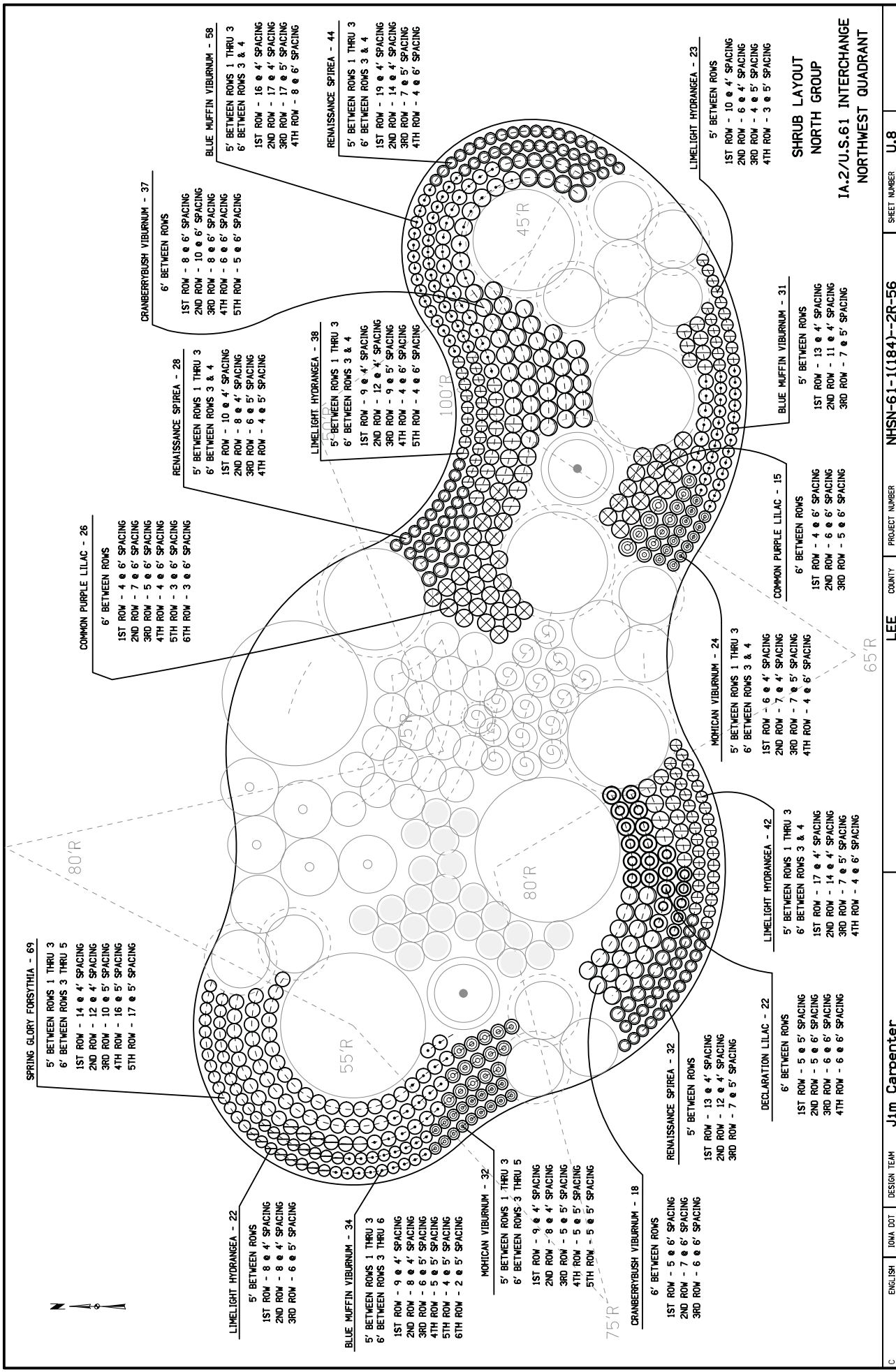


**TREE LAYOUT  
NORTH GROUP  
IA.2/U.S.61 INTERCHANGE  
NORTHWEST QUADRANT**

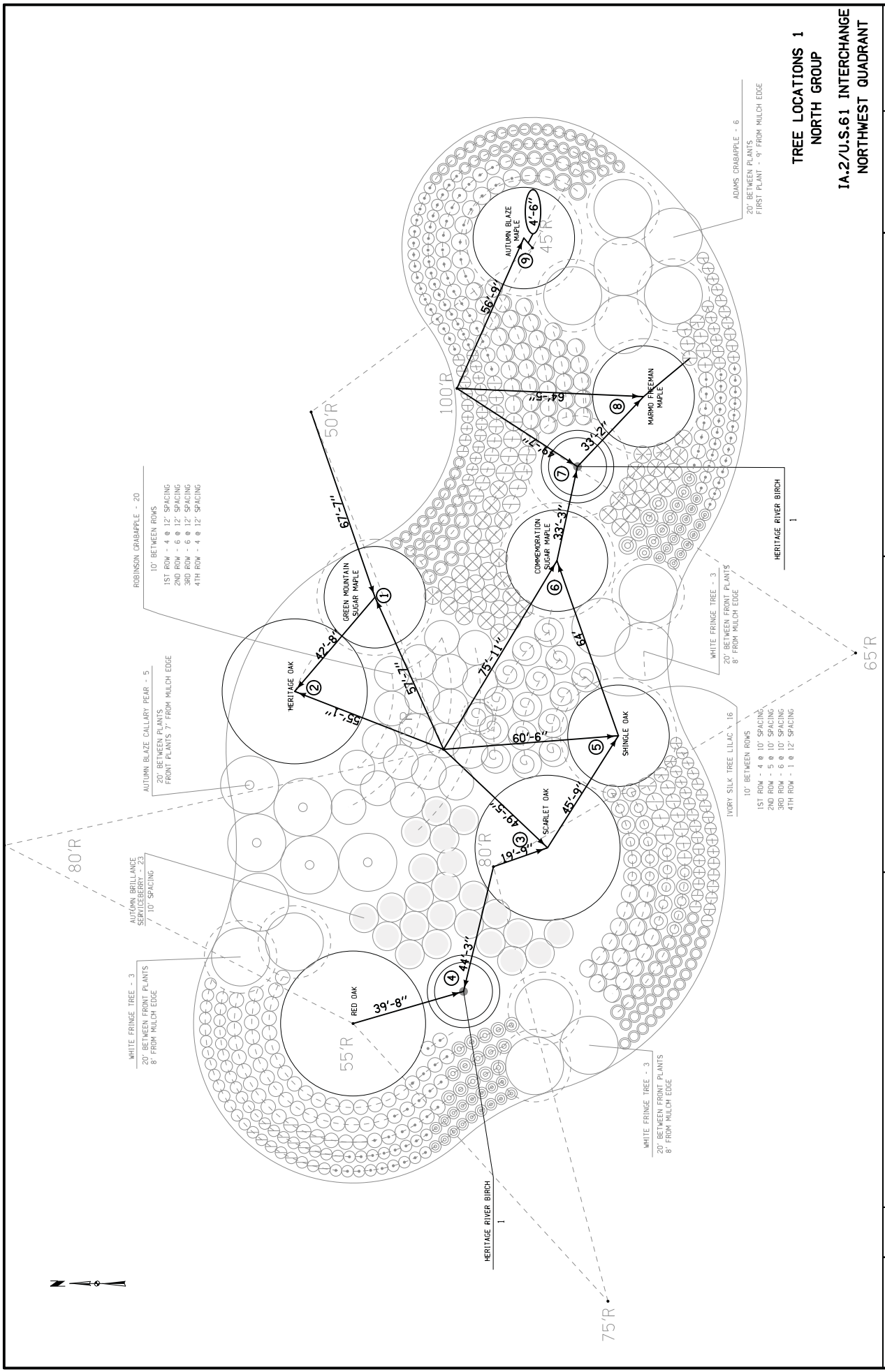
ENGLISH	7/17/2013	Jcarpen	DESIGN TEAM	<b>Jim Carpenter</b>	PROJECT NUMBER	<b>NHSN-61-(1184)-2R-56</b>	SHEET NUMBER	<b>U.7</b>
---------	-----------	---------	-------------	----------------------	----------------	-----------------------------	--------------	------------

C:\projects\projectwise\doc\int\lan\p\Main\Documents\Projects\5606101013\Roadside\56061184\56061184\_U\_Print71e.rsd

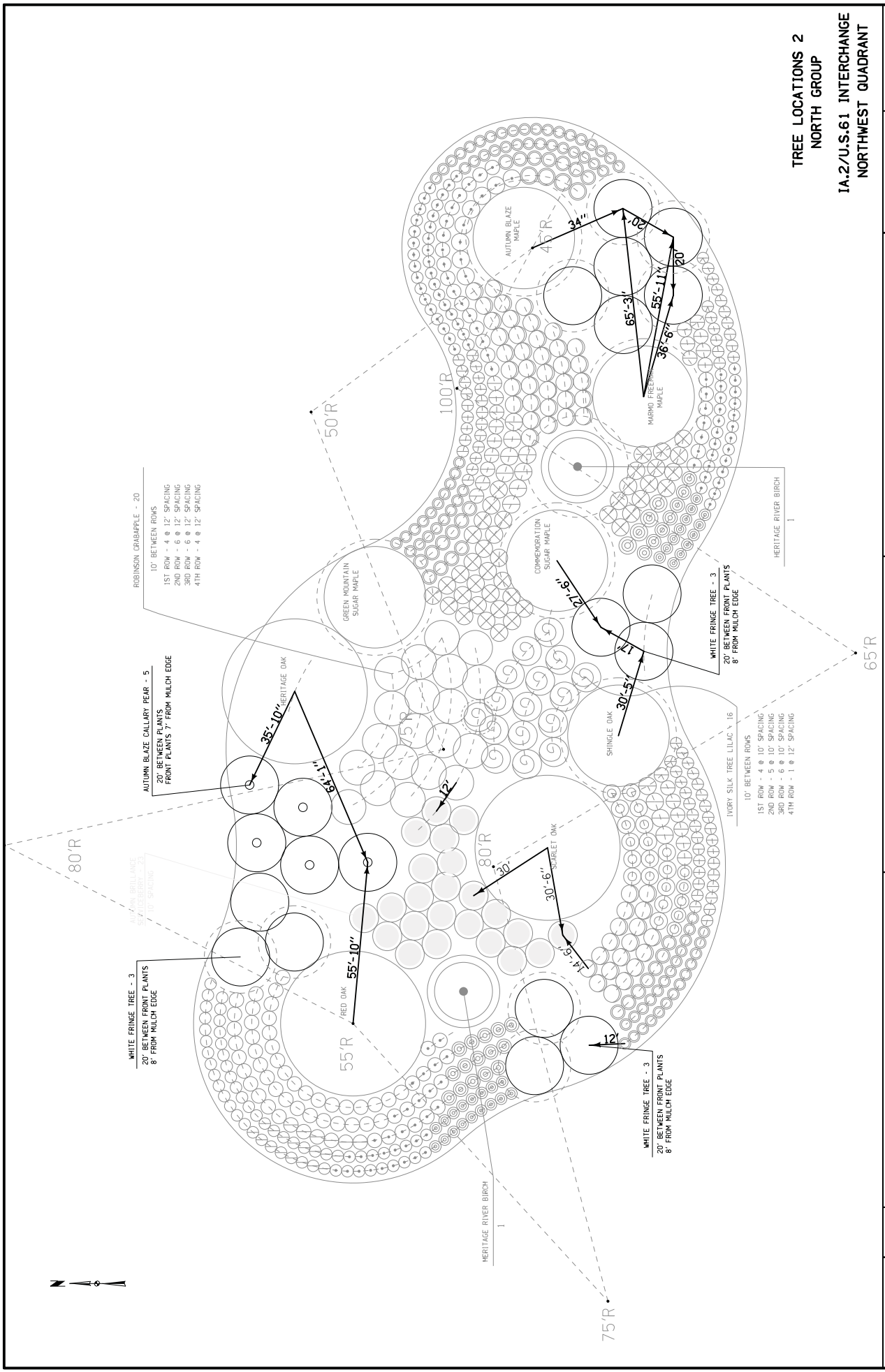




p:\x\project\wise.doc\int.\anip\Main\Documents\Projects\5606101013\Roadside\56061184\56061184\_UJPrint711e.rxd



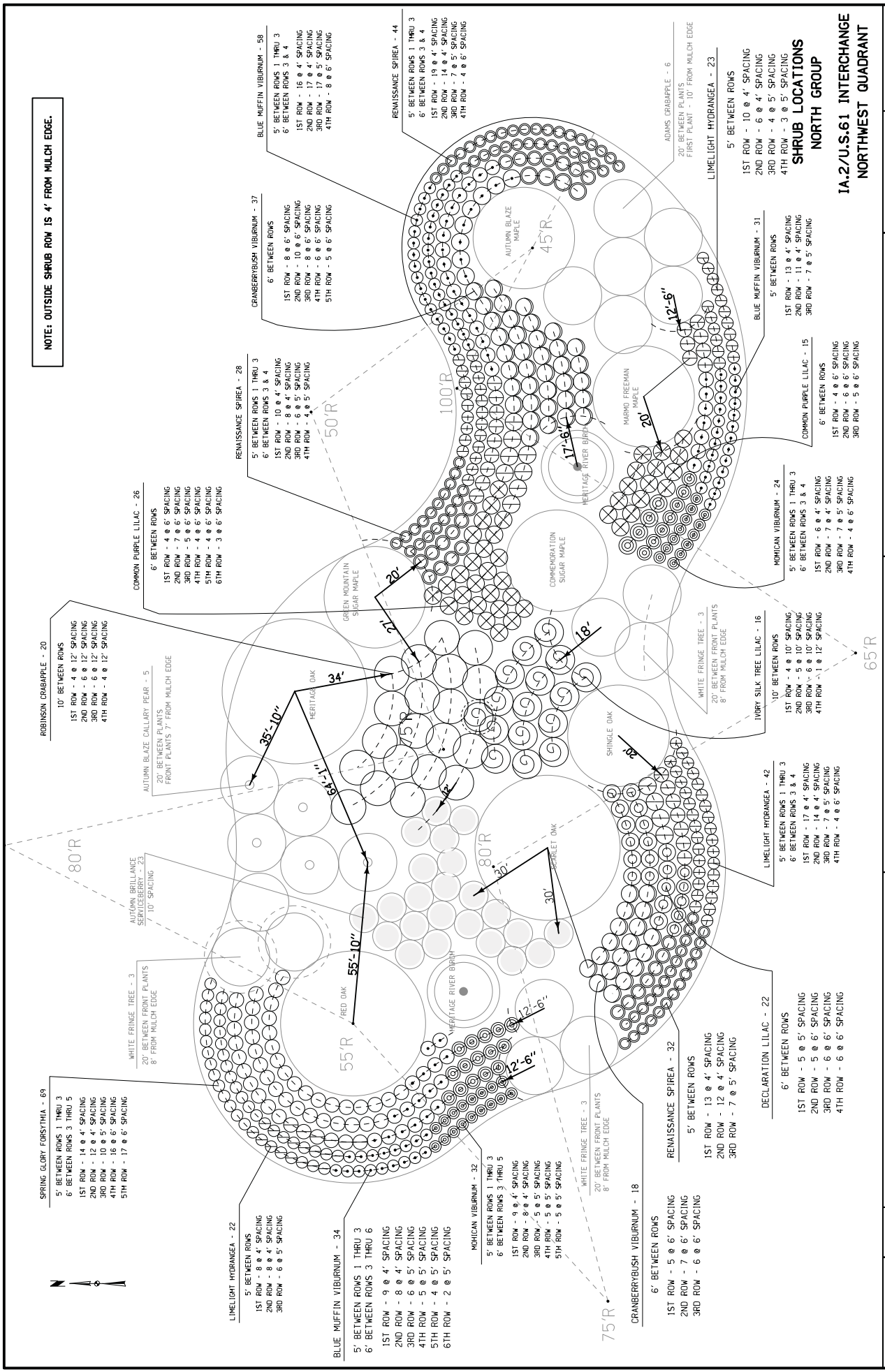
ENGLISH	7/17/2013	Jcarpen	DESIGN TEAM	<b>Jim Carpenter</b>	PROJECT NUMBER	<b>NHSN-61-1(184)-2R-56</b>	SHEET NUMBER	<b>U.9</b>
---------	-----------	---------	-------------	----------------------	----------------	-----------------------------	--------------	------------



TREE LOCATIONS 2  
NORTH GROUP  
IA.2/U.S.61 INTERCHANGE  
NORTHWEST QUADRANT

ENGLISH	7/17/2013	Jcarpen	DESIGN TEAM	Jim Carpenter	PROJECT NUMBER	NHSN-61-1184-2R-56	SHEET NUMBER	U.10
---------	-----------	---------	-------------	---------------	----------------	--------------------	--------------	------

NOTE: OUTSIDE SHRUB ROW IS 4' FROM MULCH EDGE.



SPRING GLORY FORSYTHIA - 69  
 5' BETWEEN ROWS 1 THRU 3  
 6' BETWEEN ROWS 3 THRU 5  
 1ST ROW - 14 @ 4' SPACING  
 2ND ROW - 12 @ 4' SPACING  
 3RD ROW - 10 @ 5' SPACING  
 4TH ROW - 16 @ 6' SPACING  
 5TH ROW - 17 @ 6' SPACING

ROBINSON CANNABLE - 20  
 10' BETWEEN ROWS  
 1ST ROW - 4 @ 12" SPACING  
 2ND ROW - 6 @ 12" SPACING  
 3RD ROW - 6 @ 12" SPACING  
 4TH ROW - 4 @ 12" SPACING

COMMON PURPLE LILAC - 26  
 6' BETWEEN ROWS  
 1ST ROW - 8 @ 6' SPACING  
 2ND ROW - 8 @ 6' SPACING  
 3RD ROW - 8 @ 6' SPACING  
 4TH ROW - 4 @ 6' SPACING  
 5TH ROW - 4 @ 6' SPACING  
 6TH ROW - 3 @ 6' SPACING

RENAISSANCE SPIREA - 32  
 5' BETWEEN ROWS 1 THRU 3  
 6' BETWEEN ROWS 3 & 4  
 1ST ROW - 10 @ 4' SPACING  
 2ND ROW - 8 @ 4' SPACING  
 3RD ROW - 6 @ 5' SPACING  
 4TH ROW - 4 @ 5' SPACING

LIME LIGHT HYDRANGEA - 22  
 5' BETWEEN ROWS  
 1ST ROW - 8 @ 4' SPACING  
 2ND ROW - 8 @ 4' SPACING  
 3RD ROW - 6 @ 5' SPACING

GRANBERRYBUSH VIBURNUM - 37  
 6' BETWEEN ROWS  
 1ST ROW - 10 @ 6' SPACING  
 2ND ROW - 10 @ 6' SPACING  
 3RD ROW - 8 @ 6' SPACING  
 4TH ROW - 6 @ 6' SPACING  
 5TH ROW - 5 @ 6' SPACING

RENAISSANCE SPIREA - 28  
 5' BETWEEN ROWS 1 THRU 3  
 6' BETWEEN ROWS 3 & 4  
 1ST ROW - 10 @ 4' SPACING  
 2ND ROW - 8 @ 4' SPACING  
 3RD ROW - 6 @ 5' SPACING  
 4TH ROW - 4 @ 5' SPACING

BLUE MUFFIN VIBURNUM - 58  
 5' BETWEEN ROWS 1 THRU 3  
 6' BETWEEN ROWS 3 & 4  
 1ST ROW - 16 @ 4' SPACING  
 2ND ROW - 14 @ 4' SPACING  
 3RD ROW - 17 @ 5' SPACING  
 4TH ROW - 8 @ 6' SPACING

BLUE MUFFIN VIBURNUM - 34  
 5' BETWEEN ROWS 1 THRU 3  
 6' BETWEEN ROWS 3 THRU 6  
 1ST ROW - 9 @ 4' SPACING  
 2ND ROW - 8 @ 4' SPACING  
 3RD ROW - 6 @ 5' SPACING  
 4TH ROW - 5 @ 5' SPACING  
 5TH ROW - 4 @ 5' SPACING  
 6TH ROW - 2 @ 5' SPACING

COMMON PURPLE LILAC - 15  
 6' BETWEEN ROWS  
 1ST ROW - 4 @ 6' SPACING  
 2ND ROW - 6 @ 6' SPACING  
 3RD ROW - 5 @ 6' SPACING

RENAISSANCE SPIREA - 44  
 5' BETWEEN ROWS 1 THRU 3  
 6' BETWEEN ROWS 3 & 4  
 1ST ROW - 19 @ 4' SPACING  
 2ND ROW - 14 @ 4' SPACING  
 3RD ROW - 7 @ 5' SPACING  
 4TH ROW - 4 @ 6' SPACING

ADAMS CRABAPPLE - 6  
 20' BETWEEN ROWS  
 FIRST PLANT - 10' FROM MULCH EDGE

GRANBERRYBUSH VIBURNUM - 18  
 6' BETWEEN ROWS  
 1ST ROW - 5 @ 6' SPACING  
 2ND ROW - 7 @ 6' SPACING  
 3RD ROW - 6 @ 6' SPACING

MOHICAN VIBURNUM - 24  
 5' BETWEEN ROWS 1 THRU 3  
 6' BETWEEN ROWS 3 & 4  
 1ST ROW - 6 @ 4' SPACING  
 2ND ROW - 7 @ 4' SPACING  
 3RD ROW - 7 @ 4' SPACING  
 4TH ROW - 4 @ 6' SPACING

RENAISSANCE SPIREA - 23  
 5' BETWEEN ROWS  
 1ST ROW - 10 @ 4' SPACING  
 2ND ROW - 6 @ 4' SPACING  
 3RD ROW - 4 @ 5' SPACING  
 4TH ROW - 3 @ 5' SPACING

BLUE MUFFIN VIBURNUM - 31  
 5' BETWEEN ROWS  
 1ST ROW - 13 @ 4' SPACING  
 2ND ROW - 11 @ 4' SPACING  
 3RD ROW - 7 @ 5' SPACING

DECLARATION LILAC - 22  
 6' BETWEEN ROWS  
 1ST ROW - 5 @ 5' SPACING  
 2ND ROW - 5 @ 6' SPACING  
 3RD ROW - 6 @ 6' SPACING  
 4TH ROW - 6 @ 6' SPACING

MOHICAN VIBURNUM - 24  
 5' BETWEEN ROWS 1 THRU 3  
 6' BETWEEN ROWS 3 & 4  
 1ST ROW - 6 @ 4' SPACING  
 2ND ROW - 7 @ 4' SPACING  
 3RD ROW - 7 @ 4' SPACING  
 4TH ROW - 4 @ 6' SPACING

RENAISSANCE SPIREA - 32  
 5' BETWEEN ROWS  
 1ST ROW - 13 @ 4' SPACING  
 2ND ROW - 12 @ 4' SPACING  
 3RD ROW - 7 @ 5' SPACING

LIME LIGHT HYDRANGEA - 23  
 5' BETWEEN ROWS  
 1ST ROW - 10 @ 4' SPACING  
 2ND ROW - 6 @ 4' SPACING  
 3RD ROW - 4 @ 5' SPACING  
 4TH ROW - 3 @ 5' SPACING

GRANBERRYBUSH VIBURNUM - 18  
 6' BETWEEN ROWS  
 1ST ROW - 5 @ 6' SPACING  
 2ND ROW - 7 @ 6' SPACING  
 3RD ROW - 6 @ 6' SPACING

MOHICAN VIBURNUM - 24  
 5' BETWEEN ROWS 1 THRU 3  
 6' BETWEEN ROWS 3 & 4  
 1ST ROW - 6 @ 4' SPACING  
 2ND ROW - 7 @ 4' SPACING  
 3RD ROW - 7 @ 4' SPACING  
 4TH ROW - 4 @ 6' SPACING

RENAISSANCE SPIREA - 23  
 5' BETWEEN ROWS  
 1ST ROW - 10 @ 4' SPACING  
 2ND ROW - 6 @ 4' SPACING  
 3RD ROW - 4 @ 5' SPACING  
 4TH ROW - 3 @ 5' SPACING

ADAMS CRABAPPLE - 6  
 20' BETWEEN ROWS  
 FIRST PLANT - 10' FROM MULCH EDGE

DECLARATION LILAC - 22  
 6' BETWEEN ROWS  
 1ST ROW - 5 @ 5' SPACING  
 2ND ROW - 5 @ 6' SPACING  
 3RD ROW - 6 @ 6' SPACING  
 4TH ROW - 6 @ 6' SPACING

MOHICAN VIBURNUM - 24  
 5' BETWEEN ROWS 1 THRU 3  
 6' BETWEEN ROWS 3 & 4  
 1ST ROW - 6 @ 4' SPACING  
 2ND ROW - 7 @ 4' SPACING  
 3RD ROW - 7 @ 4' SPACING  
 4TH ROW - 4 @ 6' SPACING

RENAISSANCE SPIREA - 32  
 5' BETWEEN ROWS  
 1ST ROW - 13 @ 4' SPACING  
 2ND ROW - 12 @ 4' SPACING  
 3RD ROW - 7 @ 5' SPACING

LIME LIGHT HYDRANGEA - 23  
 5' BETWEEN ROWS  
 1ST ROW - 10 @ 4' SPACING  
 2ND ROW - 6 @ 4' SPACING  
 3RD ROW - 4 @ 5' SPACING  
 4TH ROW - 3 @ 5' SPACING

GRANBERRYBUSH VIBURNUM - 18  
 6' BETWEEN ROWS  
 1ST ROW - 5 @ 6' SPACING  
 2ND ROW - 7 @ 6' SPACING  
 3RD ROW - 6 @ 6' SPACING

MOHICAN VIBURNUM - 24  
 5' BETWEEN ROWS 1 THRU 3  
 6' BETWEEN ROWS 3 & 4  
 1ST ROW - 6 @ 4' SPACING  
 2ND ROW - 7 @ 4' SPACING  
 3RD ROW - 7 @ 4' SPACING  
 4TH ROW - 4 @ 6' SPACING

RENAISSANCE SPIREA - 23  
 5' BETWEEN ROWS  
 1ST ROW - 10 @ 4' SPACING  
 2ND ROW - 6 @ 4' SPACING  
 3RD ROW - 4 @ 5' SPACING  
 4TH ROW - 3 @ 5' SPACING

ADAMS CRABAPPLE - 6  
 20' BETWEEN ROWS  
 FIRST PLANT - 10' FROM MULCH EDGE

DECLARATION LILAC - 22  
 6' BETWEEN ROWS  
 1ST ROW - 5 @ 5' SPACING  
 2ND ROW - 5 @ 6' SPACING  
 3RD ROW - 6 @ 6' SPACING  
 4TH ROW - 6 @ 6' SPACING

MOHICAN VIBURNUM - 24  
 5' BETWEEN ROWS 1 THRU 3  
 6' BETWEEN ROWS 3 & 4  
 1ST ROW - 6 @ 4' SPACING  
 2ND ROW - 7 @ 4' SPACING  
 3RD ROW - 7 @ 4' SPACING  
 4TH ROW - 4 @ 6' SPACING

RENAISSANCE SPIREA - 32  
 5' BETWEEN ROWS  
 1ST ROW - 13 @ 4' SPACING  
 2ND ROW - 12 @ 4' SPACING  
 3RD ROW - 7 @ 5' SPACING

LIME LIGHT HYDRANGEA - 23  
 5' BETWEEN ROWS  
 1ST ROW - 10 @ 4' SPACING  
 2ND ROW - 6 @ 4' SPACING  
 3RD ROW - 4 @ 5' SPACING  
 4TH ROW - 3 @ 5' SPACING

IA.27U.S.61 INTERCHANGE  
 NORTHWEST QUADRANT

ENGLISH	DATE	DESIGN TEAM	PROJECT NUMBER	SHEET NUMBER
7/17/2013	Jcarpen	Jim Carpenter	NHSN-61-1(184)-2R-56	U.11