

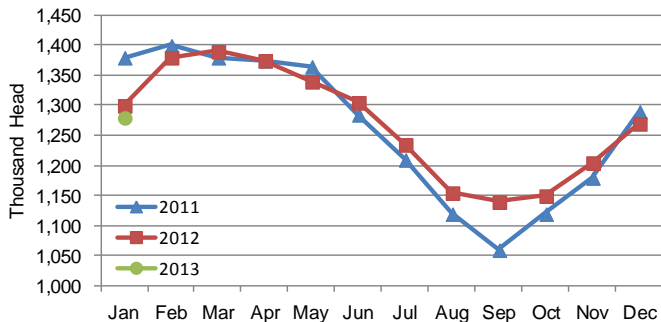
## Cattle on Feed

Cattle and calves on feed for slaughter market in Iowa for all feedlots totaled 1,280,000 on January 1, 2013 according to the USDA, National Agricultural Statistics Service, Iowa Field Office. The inventory is up 1 percent from December 1, 2012 but down 2 percent from January 1, 2012. Feedlots with a capacity greater than 1,000 head had 620,000 head on feed, up from last month but unchanged from last year. Feedlots with a capacity less than 1,000 head had 660,000 head on feed, unchanged from last month but down 3 percent from last year.

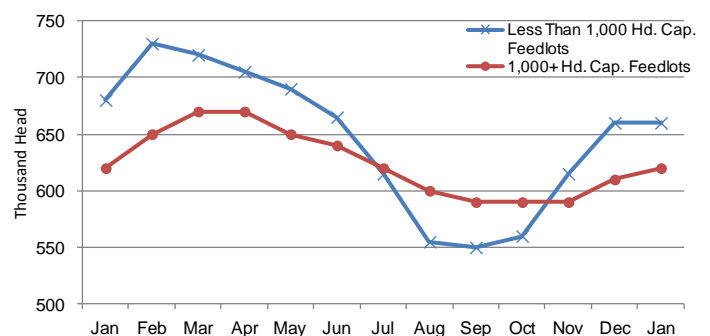
Placements during December totaled 162,000 head, a decrease of 38 percent from last month and down 6 percent from last year. Feedlots with a capacity greater than 1,000 head placed 82,000 head, down 33 percent from last month but up 6 percent from last year. Feedlots with a capacity less than 1,000 head placed 80,000 head. This is down 42 percent from last month and down 16 percent from last year.

Marketings for December were 144,000 head, down 23 percent from last month and down 6 percent from last year. Feedlots with a capacity greater than 1,000 head marketed 68,000 head, down 32 percent from last month but up 8 percent from last year. Feedlots with a capacity less than 1,000 head marketed 76,000 head, down 13 percent from last month and down 16 percent from last year. Other disappearance totaled 8,000 head.

**Cattle on Feed, Inventory on all Feedlots, Iowa: 2011-2012**



**Cattle on Feed, Inventory by Feedlot Capacity, Iowa: Past 12 Months**



## All Cattle on Feed, Iowa

Item	Lots 1,000+ Head (1,000 Head)	Lots Less than 1,000 Head (1,000 Head)	All Lots (1,000 Head)
Cattle on Feed, December 1, 2012 .....	610	660	1,270
December Placements .....	82	80	162
December Marketings .....	68	76	144
December Other Disappearance .....	4	4	8
Cattle on Feed, January 1, 2013 .....	620	660	1,280

## Cattle on Feed: Number on Feed, Placements, Marketings, and Other Disappearance by Month, 1,000+ Capacity Feedlots

[Cattle and calves on feed are animals for slaughter market being fed a ration of grain or other concentrates and are expected to produce a carcass that will grade select or better.]

State	Cattle on Feed January 1			Placements during December			Marketings during December			December Disappearance other than Slaughter <sup>1</sup>		
	2012 (1,000 Head)	2013 (1,000 Head)	'13 as % of '12 (Percent)	2011 (1,000 Head)	2012 (1,000 Head)	'12 as % of '11 (Percent)	2011 (1,000 Head)	2012 (1,000 Head)	'12 as % of '11 (Percent)	2011 (1,000 Head)	2012 (1,000 Head)	'12 as % of '11 (Percent)
Arizona .....	279	272	97	26	29	112	36	23	64	1	1	100
California .....	510	480	94	61	50	82	52	55	106	4	5	125
Colorado .....	1,150	1,000	87	160	140	88	160	155	97	10	5	50
Idaho .....	230	230	100	36	26	72	40	40	100	1	1	100
<b>Iowa .....</b>	<b>620</b>	<b>620</b>	<b>100</b>	<b>77</b>	<b>82</b>	<b>106</b>	<b>63</b>	<b>68</b>	<b>108</b>	<b>4</b>	<b>4</b>	<b>100</b>
Kansas .....	2,250	2,110	94	350	365	104	445	425	96	15	20	133
Nebraska .....	2,550	2,480	97	380	390	103	380	425	112	10	15	150
Oklahoma .....	375	345	92	45	52	116	52	49	94	3	3	100
South Dakota ...	260	230	88	37	34	92	37	33	89	5	1	20
Texas .....	2,940	2,720	93	400	415	104	420	380	90	30	15	50
Washington .....	232	247	106	44	25	57	45	38	84	3	1	33
Other States ....	465	459	99	57	56	98	46	54	117	5	3	60
United States ...	11,861	11,193	94	1,673	1,664	99	1,776	1,745	98	91	74	81

<sup>1</sup> Includes death loss, movement from feedlots to pasture, and shipments to other feedlots for further feeding.

**Cattle on Feed: Number on Feed by Class, 1,000+ Capacity Feedlots by Quarter, State, and United States, 2012-2013**

State	Steers & Steer Calves			Heifers & Heifer Calves			Cows & Bulls		
	January 1, 2012	October 1, 2012	January 1, 2013	January 1, 2012	October 1, 2012	January 1, 2013	January 1, 2012	October 1, 2012	January 1, 2013
	(1,000 Head)	(1,000 Head)	(1,000 Head)	(1,000 Head)	(1,000 Head)	(1,000 Head)	(1,000 Head)	(1,000 Head)	(1,000 Head)
Arizona .....	276	268	264	3	4	8	0	0	0
California .....	440	410	405	69	65	75	1	0	0
Colorado .....	745	670	620	400	325	370	5	5	10
Idaho .....	123	137	126	106	89	99	1	4	5
<b>Iowa .....</b>	<b>450</b>	<b>415</b>	<b>420</b>	<b>170</b>	<b>175</b>	<b>200</b>	<b>0</b>	<b>0</b>	<b>0</b>
Kansas .....	1,160	1,200	1,160	1,085	1,025	945	5	5	5
Nebraska .....	1,530	1,400	1,530	980	900	930	40	30	20
Oklahoma .....	215	225	220	160	110	125	0	0	0
South Dakota ..	131	108	113	101	75	91	28	12	26
Texas .....	1,730	1,690	1,720	1,209	989	999	1	1	1
Washington ...	150	137	147	80	74	96	2	2	4
Other States ..	331	300	322	133	136	132	1	3	5
United States ..	7,281	6,960	7,047	4,496	3,967	4,070	84	62	76

**Milk Cows and Production: Selected States, December 2011 and 2012**

State	Milk Cows <sup>1</sup>		Milk Per Cow <sup>2</sup>		Milk Production <sup>2</sup>		
	2011	2012	2011	2012	2011	2012	Change from 2011
	(1,000 Head)	(1,000 Head)	(Pounds)	(Pounds)	(Million Pounds)	(Million Pounds)	(Percent)
Arizona .....	191	185	1,970	2,025	376	375	-0.3
California .....	1,779	1,779	1,965	1,920	3,496	3,416	-2.3
Colorado .....	131	135	1,955	2,015	256	272	6.3
Florida .....	120	122	1,630	1,610	196	196	
Idaho .....	580	580	1,910	1,930	1,108	1,119	1.0
Illinois .....	99	100	1,680	1,690	166	169	1.8
Indiana .....	174	174	1,740	1,820	303	317	4.6
<b>Iowa .....</b>	<b>203</b>	<b>205</b>	<b>1,850</b>	<b>1,890</b>	<b>376</b>	<b>387</b>	<b>2.9</b>
Kansas .....	123	131	1,780	1,840	219	241	10.0
Michigan .....	370	377	1,950	2,020	722	762	5.5
Minnesota .....	465	465	1,620	1,690	753	786	4.4
Missouri .....	93	93	1,240	1,230	115	114	-0.9
New Mexico .....	334	321	2,025	2,100	676	674	-0.3
New York .....	610	610	1,755	1,830	1,071	1,116	4.2
Ohio .....	270	270	1,625	1,690	439	456	3.9
Oregon .....	123	123	1,660	1,660	204	204	
Pennsylvania .....	539	534	1,650	1,685	889	900	1.2
Texas .....	435	433	1,860	1,855	809	803	-0.7
Utah .....	89	90	1,800	1,810	160	163	1.9
Vermont .....	133	134	1,595	1,630	212	218	2.8
Virginia .....	96	95	1,530	1,545	147	147	
Washington .....	263	264	1,950	1,950	513	515	0.4
Wisconsin .....	1,265	1,270	1,755	1,845	2,220	2,343	5.5
23-State Total .....	8,485	8,490	1,818	1,848	15,426	15,693	1.7

<sup>1</sup> Includes dry cows, excludes heifers not yet fresh. <sup>2</sup> Excludes milk sucked by calves.

**All Layers and Egg Production: Selected States, December 2011 and 2012**

[Data may not add to totals due to rounding. Data by type of flock not shown for some states to avoid disclosing individual operations, data included in United States totals.]

State	Table egg layers in flocks 30,000 & above		All layers on hand		Eggs per 100 layers		Total egg production		Table egg production	
	2011	2012	2011	2012	2011	2012	2011	2012	2011	2012
	(Thousands)	(Thousands)	(Thousands)	(Thousands)	(Number)	(Number)	(Million eggs)	(Million eggs)	(Million eggs)	(Million eggs)
Alabama .....	1,496	1,538	8,998	9,137	2,000	1,992	180	182	38	36
Arkansas .....	3,513	3,657	11,822	12,288	2,115	2,091	250	257	89	91
California .....	19,351	19,168	19,697	19,525	2,351	2,341	463	457	(D)	(D)
Colorado .....	4,306	3,747	4,778	4,186	2,491	2,317	119	97	(D)	(D)
Connecticut .....	2,279	2,330	2,342	2,394	2,348	2,339	55	56	(D)	(D)
Florida .....	9,679	8,210	10,003	8,537	2,469	2,343	247	200	242	195
Georgia .....	8,101	8,956	16,270	17,380	2,262	2,146	368	373	205	210
Illinois .....	4,253	3,930	4,464	4,177	2,464	2,394	110	100	107	96
Indiana .....	22,414	25,198	23,076	25,994	2,344	2,335	541	607	530	592
<b>Iowa .....</b>	<b>51,239</b>	<b>51,442</b>	<b>52,135</b>	<b>52,443</b>	<b>2,355</b>	<b>2,403</b>	<b>1,228</b>	<b>1,260</b>	<b>1,212</b>	<b>1,243</b>
Maine .....	3,511	3,480	3,566	3,535	2,356	2,376	84	84	(D)	(D)
Maryland .....	1,907	2,258	2,030	2,373	2,512	2,318	51	55	49	54
Michigan .....	10,646	12,059	10,796	12,209	2,519	2,539	272	310	(D)	(D)
Minnesota .....	9,550	9,499	10,052	9,926	2,417	2,378	243	236	234	229
Mississippi .....	1,523	1,576	5,697	5,516	2,141	2,121	122	117	40	39
Missouri .....	5,526	6,574	6,958	8,201	2,386	2,414	166	198	(D)	(D)
Nebraska .....	9,013	9,245	9,063	9,295	2,593	2,507	235	233	235	233
New York .....	4,302	4,399	4,529	4,632	2,495	2,526	113	117	(D)	(D)
North Carolina .....	5,798	5,967	12,706	12,897	2,101	2,101	267	271	140	145
Ohio .....	27,794	27,895	28,314	28,312	2,373	2,455	672	695	(D)	(D)
Oregon .....	2,129	2,156	2,257	2,301	2,614	2,608	59	60	57	58
Pennsylvania .....	24,085	23,698	25,284	24,918	2,456	2,508	621	625	599	604
South Carolina .....	3,152	2,955	4,303	4,228	2,277	2,271	98	96	78	74
South Dakota .....	2,444	2,214	2,484	2,254	2,375	2,573	59	58	59	58
Texas .....	14,280	15,164	17,993	18,860	2,445	2,317	440	437	(D)	(D)
Utah .....	3,504	3,769	3,534	3,799	2,434	2,422	86	92	86	92
Virginia .....	1,303	1,202	3,022	2,765	2,118	2,170	64	60	32	31
Washington .....	6,713	6,486	6,828	6,601	2,431	2,484	166	164	(D)	(D)
Wisconsin .....	4,312	4,738	4,878	5,324	2,460	2,498	120	133	(D)	(D)
Other States .....	12,325	12,361	20,279	20,090	2,135	2,205	433	443	308	322
United States .....	280,448	285,871	338,158	344,097	2,346	2,346	7,932	8,073	6,894	7,034