

A d d e n d u m

Iowa Department of Transportation
Office of Contracts

Date of Letting: January 16, 2013
Date of Addendum: January 10, 2013

B.O.	Proposal ID	Proposal Work Type	County	Project Number	Addendum
102	57-3432-606	PCC PAVEMENT - GRADE & REPLACE	LINN	STP-U-3432(606)--70-57	16JAN102.A05

Notice: Only the bid proposal holders receive this addendum and responsibility for notifying any potential subcontractors or suppliers remains with the proposal holder.

Make the following changes to the PROPOSAL SCHEDULE OF PRICES:

Change Proposal Line No. 0500 2554-0112008 WATER MAIN, TRENCHED, DUCTILE IRON
PIPE (DIP), 8 IN.:

From: 800.000 LF

To: 670.000 LF

Change Proposal Line No. 0510 2554-0112010 WATER MAIN, TRENCHED, DUCTILE IRON
PIPE (DIP), 10 IN.:

From: 15.000 LF

To: 147.000 LF

Change Proposal Line No. 0520 2554-0203000 FITTINGS BY WEIGHT, DUCTILE IRON:

From: 552.000 LB

To: 684.000 LB

Change Proposal Line No. 0540 2554-0207008 VALVE, GATE, DIP, 8 IN.:

From: 3.000 EACH

To: 2.000 EACH

Add Proposal Line No. 0662 2554-0207010 VALVE, GATE, DIP, 10 IN. EACH 1.0

Make the following change to plan sheet C.7:

Modified "Tabulation of AWWA C153/A21.53 Water Main Fittings" for changes to Division 2
water main.

Replace plan sheet C.7 with attached plan sheet C.7.

Make the following change to plan sheet O.3:

Plan and profile originally depicting 132 lineal feet of 8" diameter water main construction
revised to show 10" diameter water main construction. Size of water main fittings revised
accordingly.

Replace plan sheet O.3 with attached plan sheet O.3.

Make the following changes to plan sheets D.1, D.2, E.1, M.1, O.1, O.2, and O.4:

Revised to show the 10" diameter water main described above in the plan views.

Replace plan sheets D.1, D.2, E.1, M.1, O.1, O.2 and O.4 with attached plan sheets D.1, D.2, E.1, M.1, O.1, O.2 and O.4.

						Totals:		381.0			0.0			0.0			42.0		
① Refer to RL-13, EW-203, or EW-204.				LONGITUDINAL SUBDRAIN SHOULDER AND BACKSLOPE														* Not a bid item	
				Refer to Soils Sheets															
				This Data Entry Sheet fills Tab 104-9 effective 04-17-12															
Location				Longitudinal Subdrain (RF-19C)										Subdrain Outlet			Porous* Backfill	Class "A"* Crushed Stone	Remarks
Line No.	Road or Lane Ident.	Station to Station		Side	Depth	Shoulder		Backslope		Bridge Berm ①		RF-19C, RF-19E, or RF-19F							
					D	Size	Length	Size	Length	Size	Type	Length	Station	Size	Standard Road Plan and Type				
					IN	IN	FT	IN	FT	IN		FT		IN					
1	BOYSON	+43.00	1+21.69	RT	36.0	6.0	79.0									9.0			
2	BOYSON	1+21.69	2+23.00	RT	36.0	6.0	101.0									11.0			
3	BOYSON	4+22.00	6+23.33	RT	36.0	6.0	201.0									22.0			

ADJUSTMENT OF FIXTURES			
This Data Entry Sheet fills Tab 104-10 effective 08-01-08			
No.	Location Station	Type of Fixture	Adjustment
1	+67.89	SANITARY MANHOLE	ON CENTERLINE LOWER 0.6 FT ADD CHIMNEY SEAL
2	2+95.11	SANITARY MANHOLE	ON CENTERLINE LOWER 0.5 FT ADD CHIMNEY SEAL

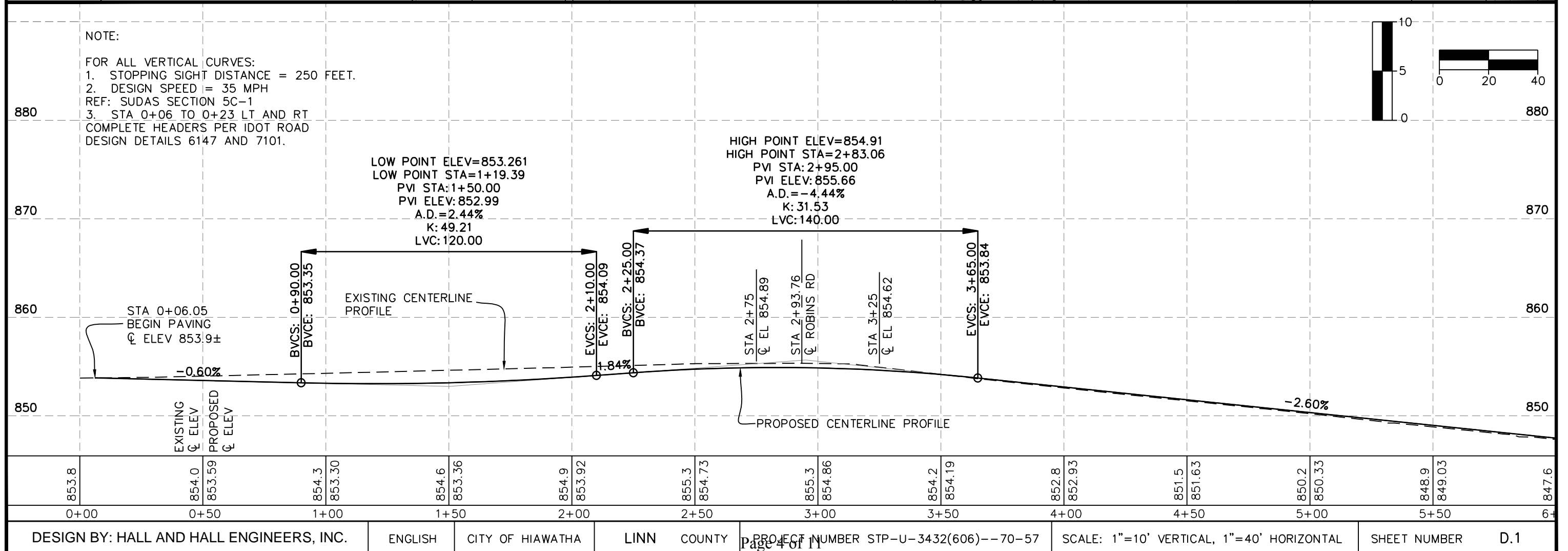
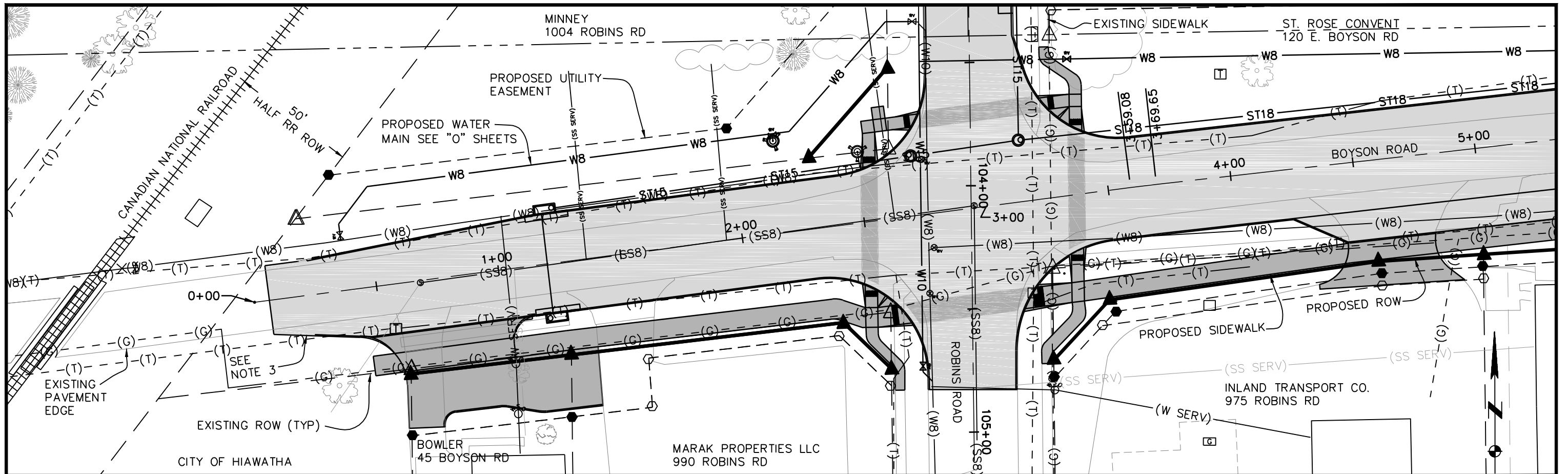
	9	0	
SAFETY CLOSURES			
Refer to Section 2518 of the Standard Specifications			
This Data Entry Sheet fills Tab 108-13A effective 08-01-08			
Station	Closure Type		Remarks
	Road Qty.	Hazard Qty.	
3+50	1		STAGE 1 SEE SHEET J.6
6+35	1		STAGE 1 SEE SHEET J.6
103+15	1		STAGE 2a SEE SHEET J.7
103+95	1		STAGE 2a SEE SHEET J.7
104+85	1		STAGE 2b SEE SHEET J.8
1+85	1		STAGE 2b SEE SHEET J.8
3+65	1		STAGE 2b SEE SHEET J.8
0+05	1		STAGE 3 SEE SHEET J.9
2+40	1		STAGE 3 SEE SHEET J.9

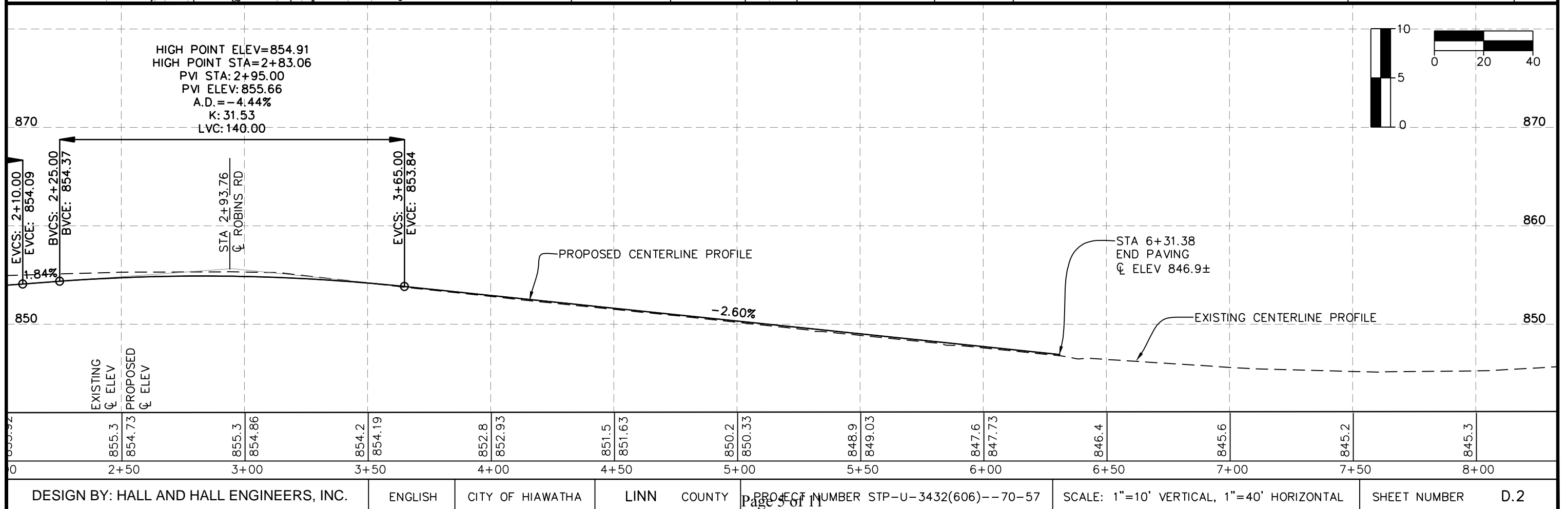
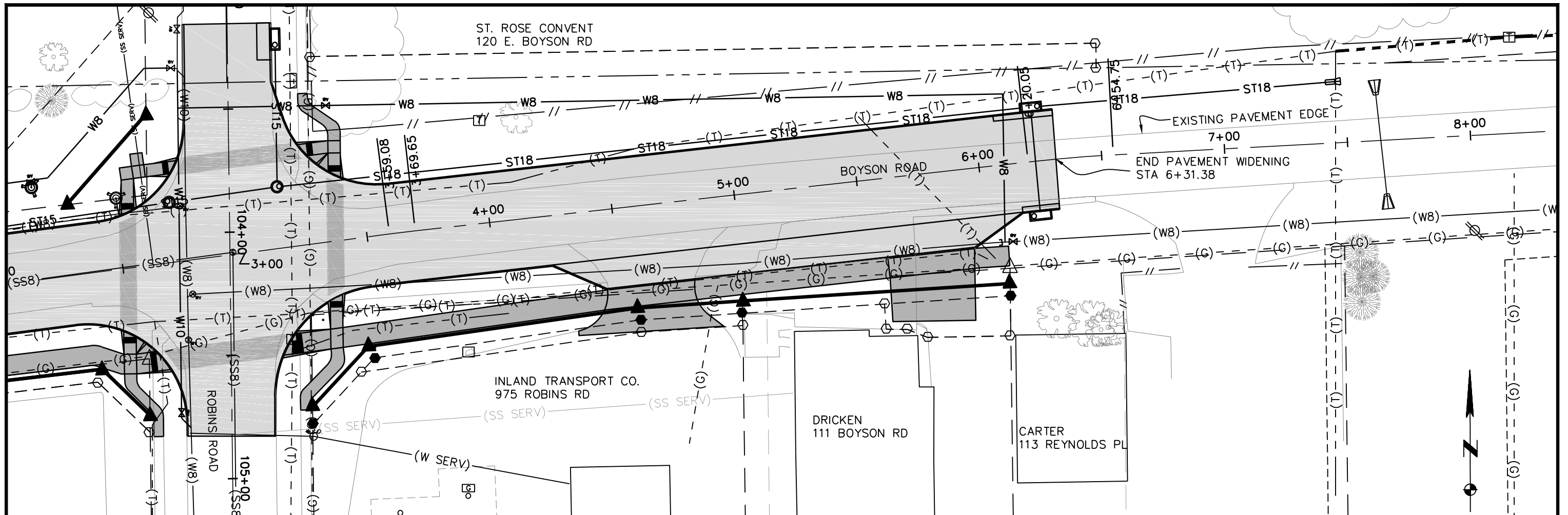
REMOVALS, AS PER PLAN		
Location	Description	Note
1+13.9 52.6' RT	WOODEN SIGN	TO BE RELOCATED
3+32.9 42' RT	CONC. FOOTING	DISPOSE
3+38.6 42.6' AND 48.1' RT	CONC. FOOTINGS	DISPOSE
4+98.3 37.2' RT	CONC. WALL	REMOVE PART OF WALL PER SHEET U.1

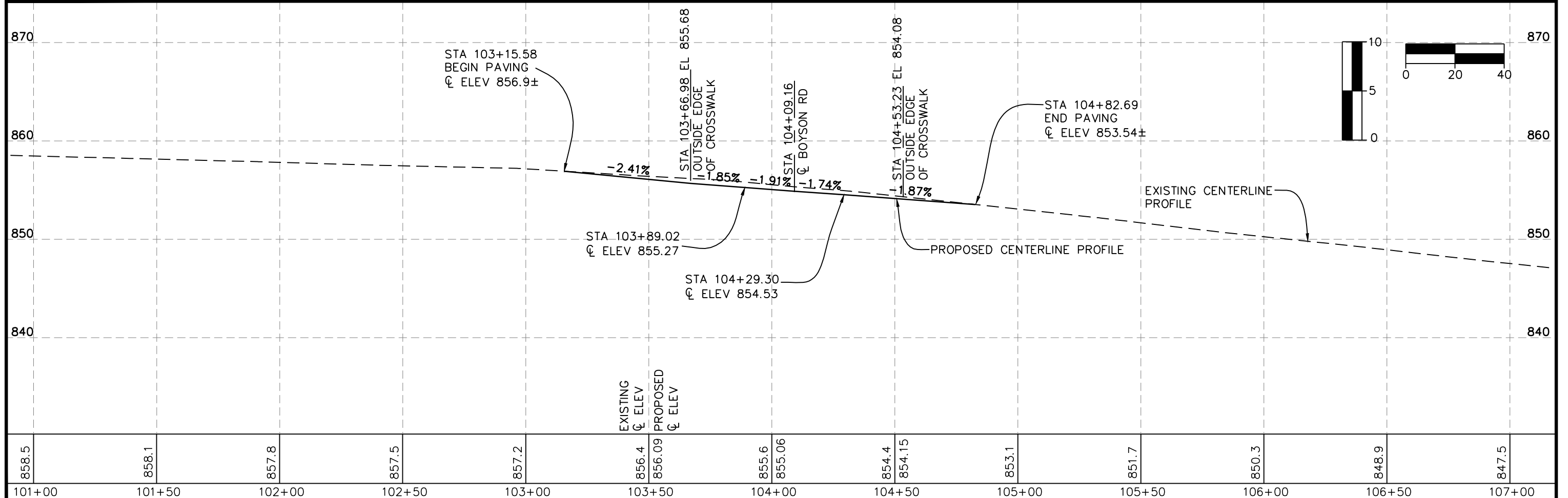
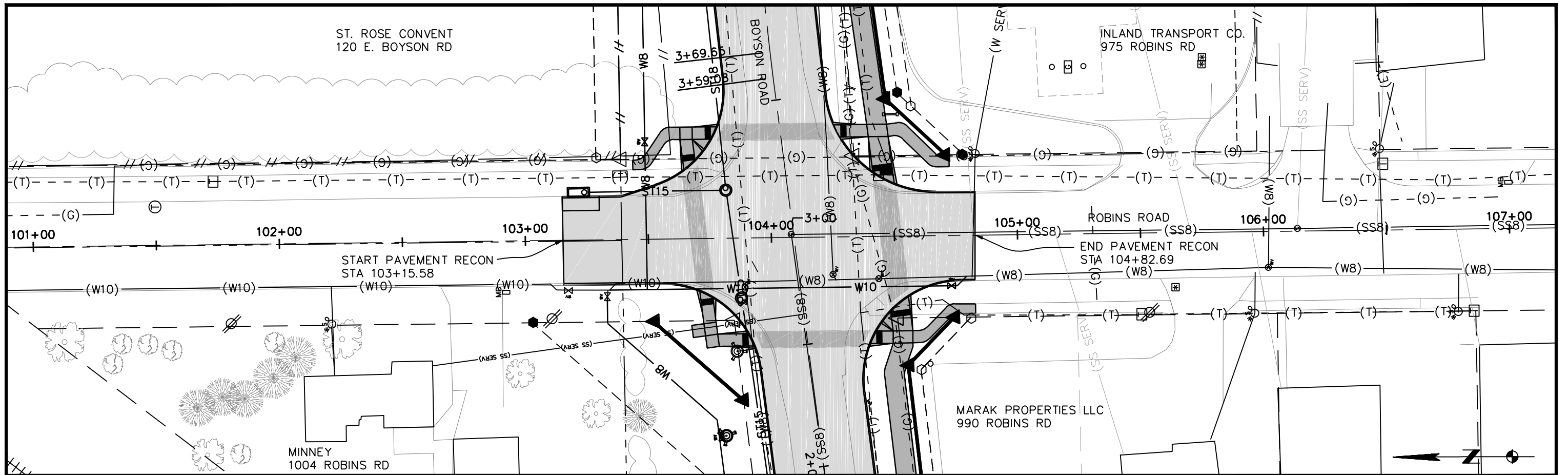
TABULATION OF AWWA C153/A21.53 WATER MAIN FITTINGS			
Division	Description	Water Main Station	Weight (lb)
1	8" MJ PLUG	200+00	26
1	8" 45° BEND	200+06.75	46
1	8" 45° BEND	200+25.84	46
1	8" 45° BEND	201+98.78	46
1	8" 45° BEND	202+56.09	46
DIV 1 TOTAL WEIGHT			210
2	8" MJ 90° BEND	303+35	57
2	8" MJ 90° BEND	303+95	57
2	10" MJ TEE	400+15.31	120
2	10"/8" MJ REDUCER	400+15.31	50
2	10" 45° BEND	401+41.3	70
2	10" 45° BEND	401+47	70
2	10"/8" MJ REDUCER	401+47	50
DIV 2 TOTAL WEIGHT			474

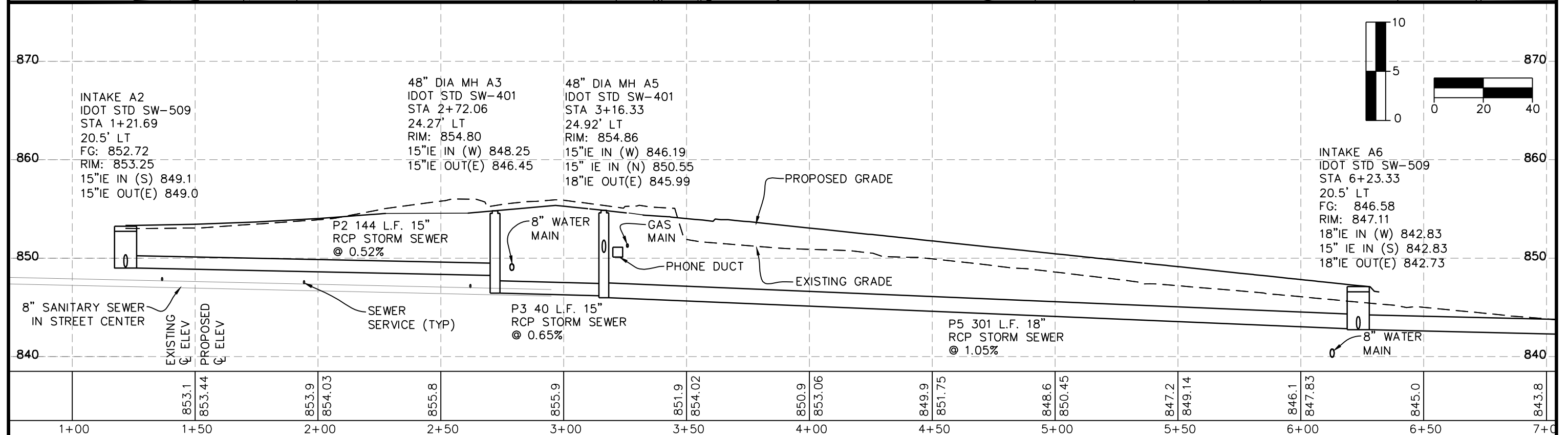
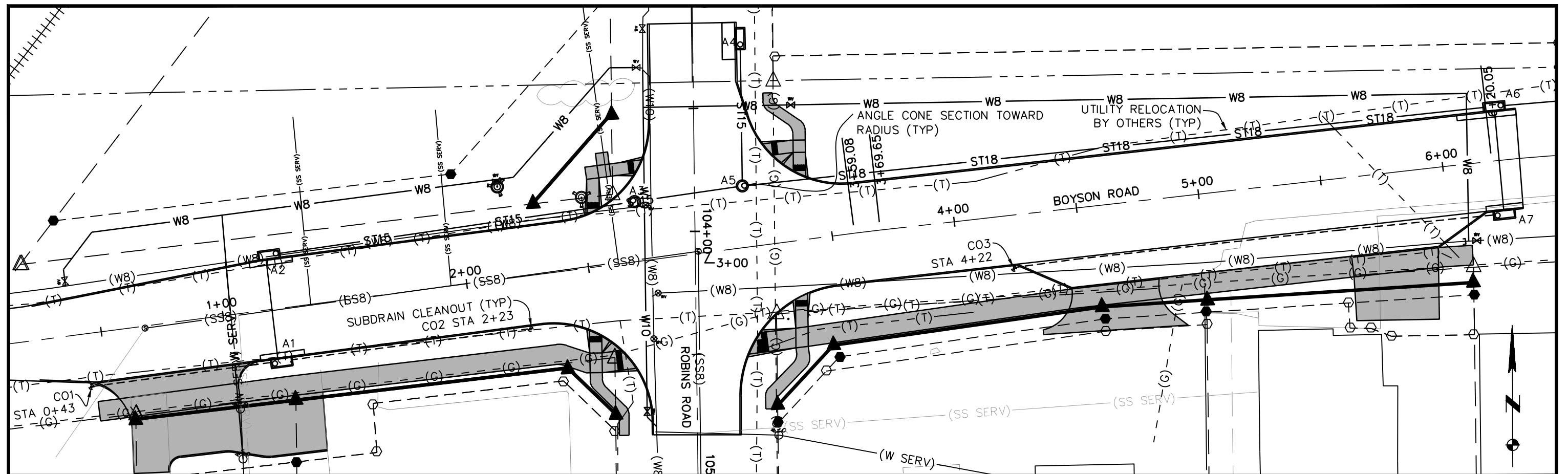
						Totals:	125.1
SIDEWALK REMOVAL							
This Data Entry Sheet fills Tab 110-5 effective 08-01-08							
Begin Station	End Station	Length	Width	Area	Area	Remarks	
		FT	FT	SF	SY		
+73.00	1+25.80	52.8	4.0	211	23.5	45 BOYSON ROAD	
3+24.00	4+44.80	120.8	4.0	483	53.7	975 ROBINS ROAD	
4+80.70	5+01.70	21.0	4.0	84	9.3	975 BOYSON ROAD	
104+26.80	104+72.60	45.8	4.0	183	20.4	975 BOYSON ROAD	
103+44.00	103+85.00	41.0	4.0	164	18.2	120 E. BOYSON ROAD	

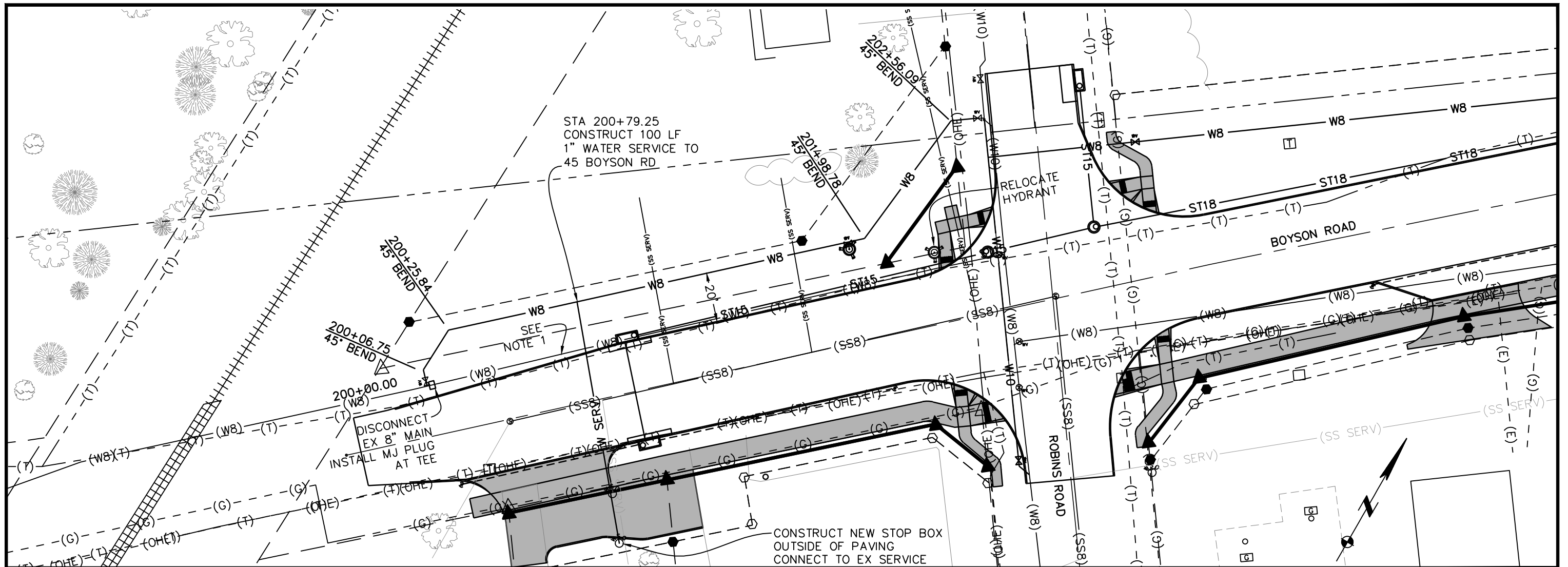
								Total:	42.5		411.7	0.0		102	
SIDEWALKS															
See MI-220 and S Sheets															
This Data Entry Sheet fills Tab 113-1 effective 04-17-12															
Road Identification	Station to Station		Side	PCC Thickness	Sidewalk Length	Sidewalk Width	Sidewalk Area	4" PCC Sidewalk	Curb Area	6" PCC Sidewalk	_" PCC Sidewalk	D.W. Length	D.W. Width	Detectable Warnings	Remarks
					FT	FT	SF	SY	SY	SY	SY	FT	FT	SF	
Boyson Road	+45.00	+57.00	RT	6 inches	12.0	8	96.0			10.7					
Boyson Road	1+02.48	2+45.08	RT	6 inches	142.6	8	1140.8		23.1	149.9		13	2	26	Includes Ped. Ramps
Boyson Road	3+34.51	4+42.41	RT	6 inches	107.9	8	863.2		30.0	125.9		18	2	36	Includes Ped. Ramps
Boyson Road	4+80.33	5+59.10	RT	6 inches	78.8	8	630.2			70.0					
Boyson Road	5+93.80	6+07.95	RT	6 inches	14.2	8	113.2			12.6					
Robins Road	103+44.03	103+63.36	LT	4 inches	24.6	4	109.9	12.2							
Robins Road	103+63.36	103+78.59	LT	6 inches					18.0	18.0		10	2	20	Ped. Ramp Area
Robins Road	103+67.22	103+93.28	RT	6 inches					24.7	24.7		10	2	20	Ped. Ramp Area
Robins Road	104+47.32	104+72.56	LT	4 inches	30.7	4	147.6	16.4							
Robins Road	104+56.99	104+82.60	RT	4 inches	29.9	4	124.7	13.9							



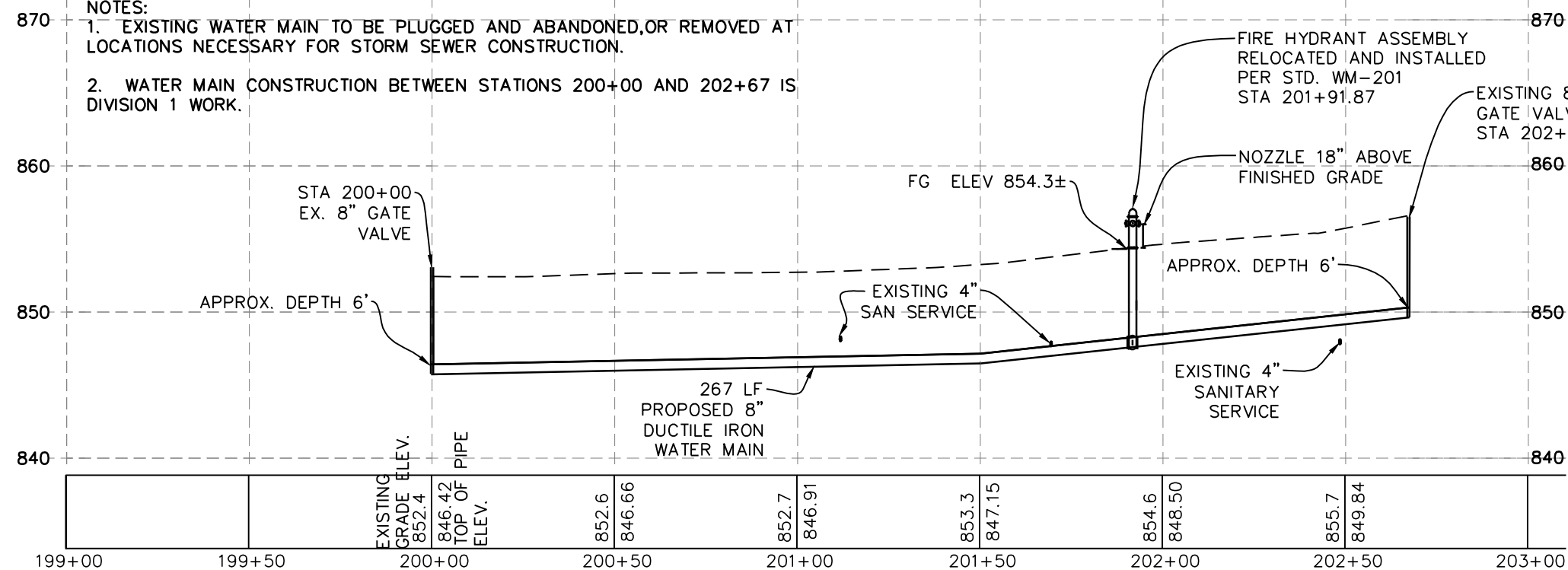




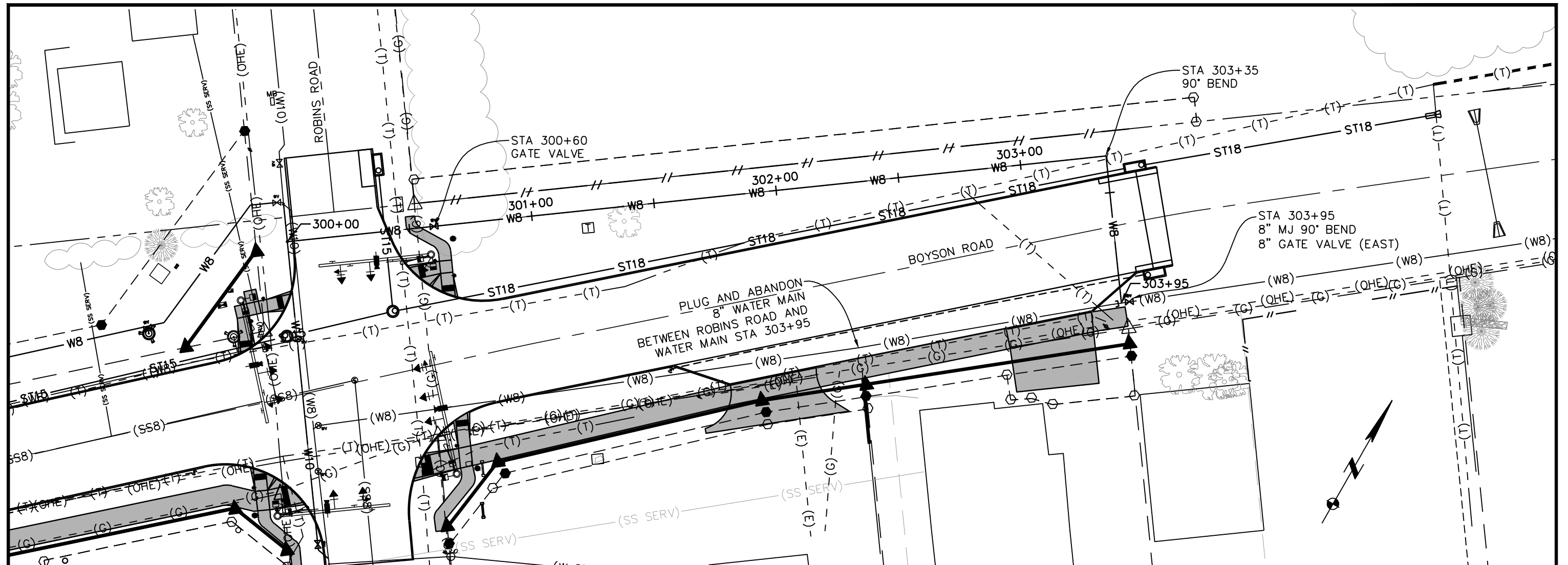




- NOTES:
1. EXISTING WATER MAIN TO BE PLUGGED AND ABANDONED, OR REMOVED AT LOCATIONS NECESSARY FOR STORM SEWER CONSTRUCTION.
 2. WATER MAIN CONSTRUCTION BETWEEN STATIONS 200+00 AND 202+67 IS DIVISION 1 WORK.

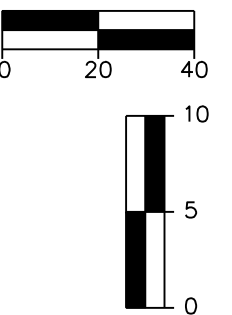
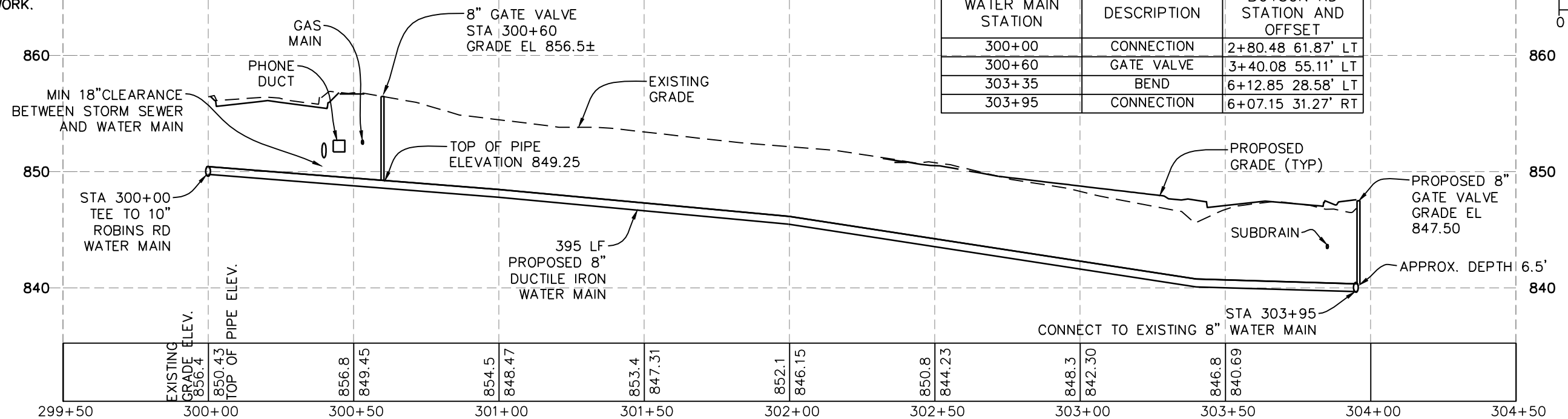


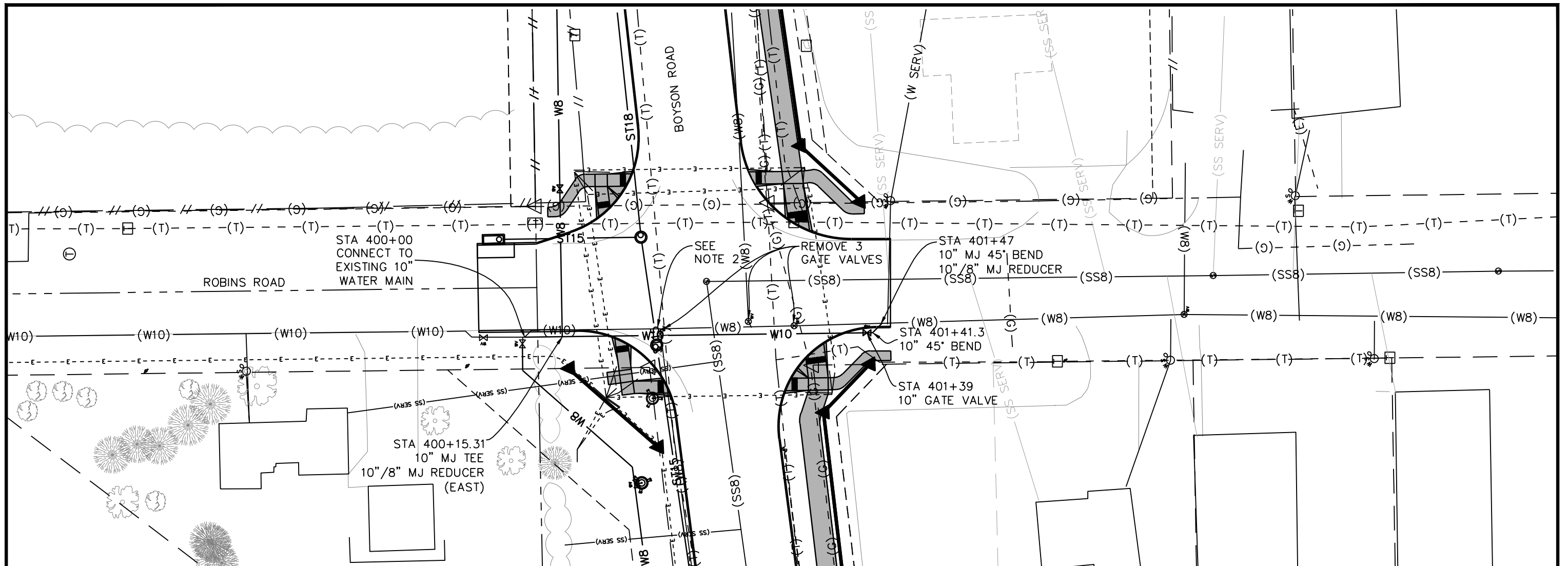
WATER MAIN LOCATION STATIONS		
WATER MAIN STATION	DESCRIPTION	BOYSON RD STATION AND OFFSET
200+00	CONNECTION	0+38 22.34' LT
200+06.75	45° BEND	0+38 27.10' LT
200+25.84	45° BEND	0+51.42 40.66' LT
200+79.25	WATER SERVICE	1+04.83 40.59' LT
201+91.87	HYDRANT	2+17.46 40.55' LT
201+98.78	45° BEND	2+24.37 40.55' LT
202+56.09	45° BEND	2+69 79.6' LT
202+67	CONNECTION	2+79.73 78.32' LT



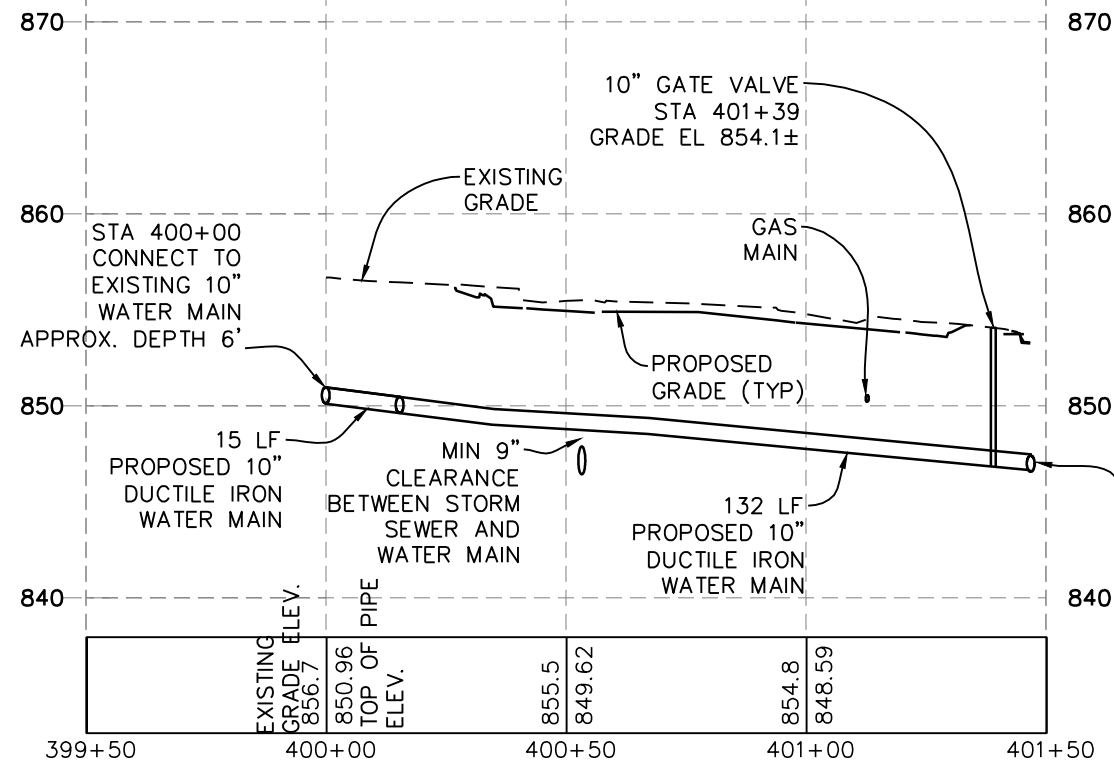
NOTES:
1. WATER MAIN CONSTRUCTION BETWEEN STATIONS 300+00 AND 303+93 IS DIVISION 2 WORK.

WATER MAIN LOCATION STATIONS		
WATER MAIN STATION	DESCRIPTION	BOYSON RD STATION AND OFFSET
300+00	CONNECTION	2+80.48 61.87' LT
300+60	GATE VALVE	3+40.08 55.11' LT
303+35	BEND	6+12.85 28.58' LT
303+95	CONNECTION	6+07.15 31.27' RT

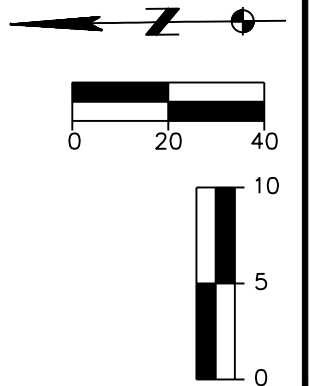


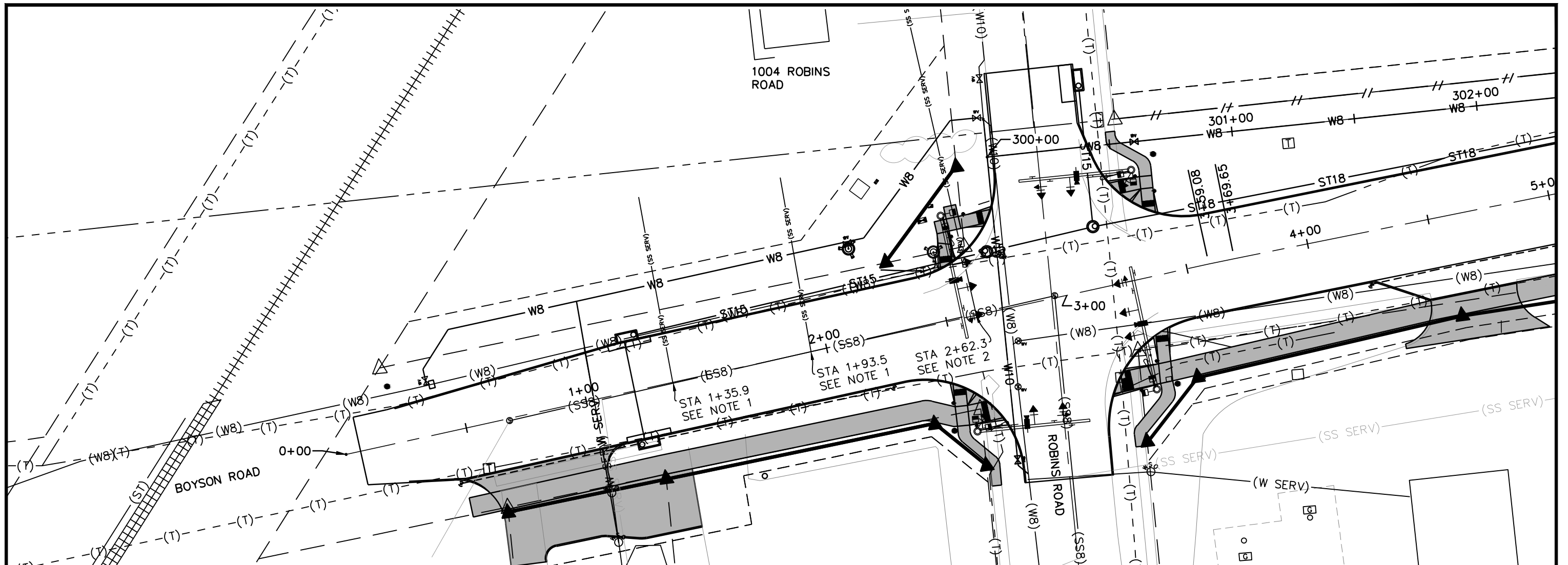


- NOTES:
1. WATER MAIN CONSTRUCTION BETWEEN STATIONS 400+00 AND 401+47 IS DIVISION 2 WORK.
 2. PLUG AND ABANDON EXISTING ROBINS ROAD 10"/8" WATER MAIN BETWEEN LIMITS OF NEW ROBINS ROAD WATER MAIN. REMOVE EXISTING WATER MAIN AS NEEDED TO FACILITATE CONSTRUCTION.
 3. MAINTAIN MINIMUM 1' CLEARANCE BETWEEN PROPOSED WATER MAIN AND STORM SEWER MANHOLE IN NORTHWEST CORNER OF THE INTERSECTION.



WATER MAIN LOCATION STATIONS		
WATER MAIN STATION	DESCRIPTION	BOYSON RD STATION AND OFFSET
400+00	10" CONNECTION	103+33.97 20.46' RT
400+15.31	8" CONNECTION	103+49.28 20.46' RT
401+39	GATE VALVE	104+72.93 20.40' RT
401+41.3	45° BEND	104+75.28 20.40' RT
401+47	45° BEND AND CONNECTION	104+79.17 16.62' RT





NOTES:

1. LOCATE CONNECTION TO SANITARY SEWER MAIN AND STUB END TO VERIFY SERVICE IS NOT OPERATIONAL. CUT 4" SERVICE OFF FROM THE MAIN AND INSTALL MORTAR PLUG AT THE MAIN. SANITARY SEWER MAIN IS 6'-8' DEEP.
2. LOCATE CONNECTION TO SANITARY SEWER MAIN AND ALIGNMENT OF SERVICE TOWARDS HOUSE. VERIFY SERVICE WILL NOT CONFLICT WITH OTHER IMPROVEMENTS. CONTACT ENGINEER IF CONFLICTS MAY OCCUR. REMOVE AND REPLACE 60 LF SEWER SERVICE FROM THE MAIN WITH 6" DIA PVC. PROVIDE SUITABLE COUPLER TO THE EXISTING 4" SERVICE. SANITARY SEWER MAIN IS 8'-10' DEEP.
3. SEE C SHEETS FOR TABULATION OF SANITARY MANHOLE ADJUSTMENTS.

