



CATTLE ON FEED

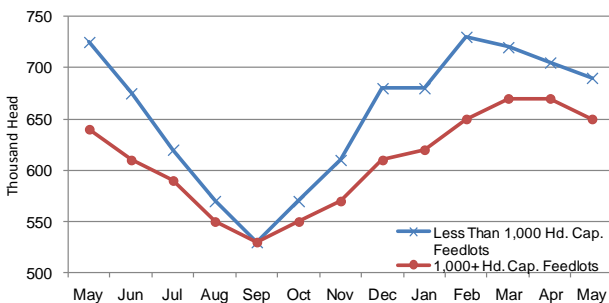
Cattle and calves on feed for slaughter market in Iowa for all feedlots totaled 1,340,000 on May 1, 2012 according to the USDA, National Agricultural Statistics Service, Iowa Field Office. The inventory is down 3 percent from April 1, 2012 and down 2 percent from May 1, 2011. Feedlots with a capacity greater than 1,000 head had 650,000 head on feed, down 3 percent from last month but up 2 percent from last year. Feedlots with a capacity less than 1,000 head had 690,000 head on feed, down 2 percent from last month and down 5 percent from last year.

Placements during April totaled 106,000 head, a decrease of 20 percent from last month and down 26 percent from last year. This is the lowest total placement since May 2011 when 92,000 head were placed. Feedlots with a capacity greater than 1,000 head placed 55,000 head, down 25 percent from last month and down 20 percent from last year. Feedlots with a capacity less than 1,000 head placed 51,000 head. This is down 15 percent from last month and down 32 percent from last year.

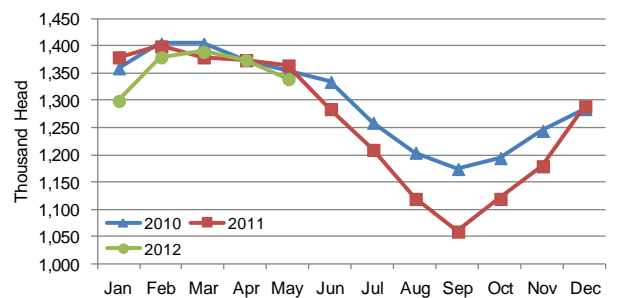
Marketings for April were 137,000 head, down 5 percent from last month and down 6 percent from last year. Feedlots with a capacity greater than 1,000 head marketed 72,000 head, up 1 percent from last month but down 5 percent from last year. Feedlots with a capacity less than 1,000 head marketed 65,000 head, down 11 percent from last month and down 7 percent from last year.

Other disappearance totaled 4,000 head.

Cattle on Feed, Inventory by Feedlot Capacity, Iowa: Past 12 Months



Cattle on Feed, Inventory on all Feedlots, Iowa: 2010-2012



All Cattle on Feed, Iowa

Item	Lots 1,000+ Head (1,000 Head)	Lots Less than 1,000 Head (1,000 Head)	All Lots (1,000 Head)
Cattle on Feed, April 1, 2012	670	705	1,375
April Placements	55	51	106
April Marketings	72	65	137
April Other Disappearance	3	1	4
Cattle on Feed, May 1, 2012	650	690	1,340

Cattle on Feed: Number on Feed, Placements, Marketings, and Other Disappearance by Month, 1,000+ Capacity Feedlots

[Cattle and calves on feed are animals for slaughter market being fed a ration of grain or other concentrates and are expected to produce a carcass that will grade select or better.]

State	Cattle on Feed May 1			Placements during April			Marketings during April			April Disappearance other than Slaughter ¹		
	2011 (1,000 Head)	2012 (1,000 Head)	'12 as % of '11 (Percent)	2011 (1,000 Head)	2012 (1,000 Head)	'12 as % of '11 (Percent)	2011 (1,000 Head)	2012 (1,000 Head)	'12 as % of '11 (Percent)	2011 (1,000 Head)	2012 (1,000 Head)	'12 as % of '11 (Percent)
Arizona	282	276	98	25	26	104	18	27	150	1	1	100
California	450	475	106	57	45	79	55	58	105	2	2	100
Colorado	1,100	1,030	94	165	120	73	150	150	100	5	10	200
Idaho	230	215	93	34	28	82	23	36	157	1	2	200
Iowa	640	650	102	69	55	80	76	72	95	3	3	100
Kansas	2,170	2,080	96	380	300	79	385	380	99	15	10	67
Nebraska	2,370	2,460	104	370	370	100	370	420	114	10	20	200
Oklahoma	355	295	83	76	47	62	74	70	95	2	2	100
South Dakota ..	255	245	96	31	32	103	39	40	103	2	2	100
Texas	2,730	2,710	99	500	410	82	530	465	88	10	15	150
Washington ...	200	224	112	28	28	100	33	34	103	2	3	150
Other States ..	393	450	115	50	60	120	54	63	117	7	8	114
United States ..	11,175	11,110	99	1,785	1,521	85	1,807	1,815	100	60	78	130

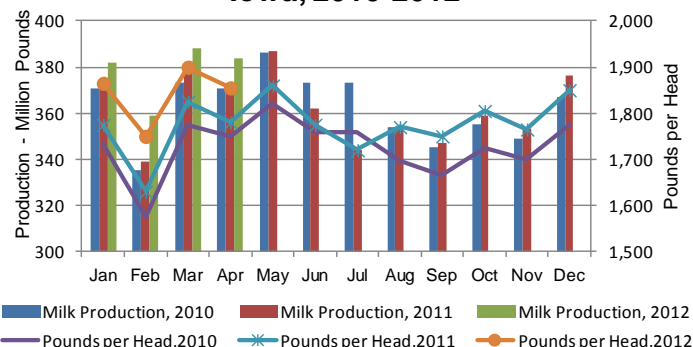
(D) Withheld to avoid disclosing data for individual operations.

¹ Includes death loss, movement from feedlots to pasture, and shipments to other feedlots for further feeding.

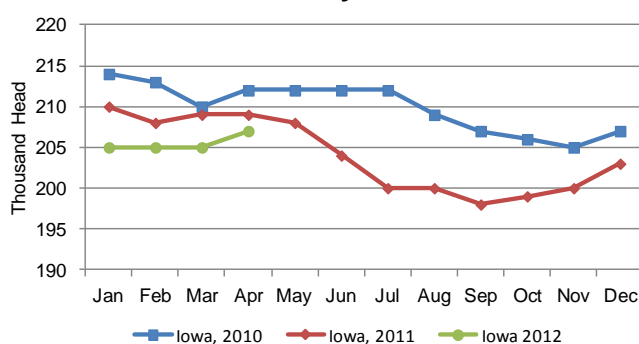
MILK PRODUCTION

Milk production in Iowa during April 2012 totaled 384 million pounds, up 3 percent from April 2011, according to the USDA, National Agricultural Statistics Service – *Milk Production* report. This is the largest April production since 1972. The average number of milk cows on hand during the month, at 207,000 head, was down 2,000 head from April 2011. Production per cow averaged 1,855 pounds, up 4 percent from April 2011 and is the highest monthly rate on record for April.

**Milk Production & Pounds per Head,
Iowa, 2010-2012**



Milk Cow Inventory, Iowa, 2010-2012



Milk Cows and Production: Selected States, April 2011 and 2012

State	Milk Cows ¹		Milk Per Cow ²		Milk Production ²		
	2011	2012	2011	2012	2011	2012	Change from 2011
	(1,000 Head)	(1,000 Head)	(Pounds)	(Pounds)	(Million Pounds)	(Million Pounds)	(Percent)
Arizona	187	194	2,125	2,155	397	418	5.3
California	1,764	1,787	1,995	2,030	3,519	3,628	3.1
Colorado	126	132	1,985	2,020	250	267	6.8
Florida	119	122	1,740	1,760	207	215	3.9
Idaho	576	577	1,870	1,920	1,077	1,108	2.9
Illinois	98	100	1,680	1,730	165	173	4.8
Indiana	172	176	1,775	1,830	305	322	5.6
Iowa	209	207	1,780	1,855	372	384	3.2
Kansas	122	123	1,805	1,820	220	224	1.8
Michigan	362	376	1,955	2,000	708	752	6.2
Minnesota	469	465	1,620	1,655	760	770	1.3
Missouri	95	94	1,380	1,435	131	135	3.1
New Mexico	326	337	2,125	2,130	693	718	3.6
New York	610	610	1,770	1,835	1,080	1,119	3.6
Ohio	268	271	1,620	1,680	434	455	4.8
Oregon	119	123	1,730	1,730	206	213	3.4
Pennsylvania	543	538	1,690	1,690	918	909	-1.0
Texas	426	440	1,915	1,915	816	843	3.3
Utah	87	91	1,740	1,790	151	163	7.9
Vermont	135	133	1,595	1,625	215	216	0.5
Virginia	96	96	1,585	1,605	152	154	1.3
Washington	256	263	1,990	2,015	509	530	4.1
Wisconsin	1,266	1,270	1,730	1,785	2,190	2,267	3.5
23-State Total ³	8,431	8,525	1,835	1,875	15,475	15,983	3.3

¹ Includes dry cows, excludes heifers not yet fresh. ² Excludes milk sucked by calves. ³ As of February 2009, the 23 States are Arizona, California, Colorado, Florida, Idaho, Illinois, Indiana, Iowa, Kansas, Michigan, Minnesota, Missouri, New Mexico, New York, Ohio, Oregon, Pennsylvania, Texas, Utah, Vermont, Virginia, Washington, and Wisconsin.

COMING SOON – QUARTERLY HOGS & PIGS SURVEY

In June, the U.S. Department of Agriculture’s National Agricultural Statistics Service (NASS) will conduct the quarterly Hogs and Pigs Survey. The agency will survey farmers for detailed inventories of market hog and breeding stock inventories as well as farrowing intentions.

Producers should receive the survey questionnaire in late May and can respond via the Internet as well as by mail or fax responses. Those who don’t respond in one of those ways will have the opportunity for a telephone or personal interview.

“Through the quarterly surveys, NASS measures and reports conditions and trends in the U.S. pork industry over the course of the year,” said Greg Thessen, director of the NASS Iowa Field Office. “The quarterly surveys enable NASS to provide timely, accurate and unbiased data that all sectors of the U.S. pork industry depend on to help make sound business decisions,”

Thessen noted that, as is the case with all NASS surveys, information provided by respondents is confidential by law. “NASS safeguards the privacy of all responses and publishes only state- and national-level data, ensuring that no individual producer or operation can be identified,” he said.

NASS will publish survey results in the *Quarterly Hogs and Pigs* report on June 29th. These and all NASS reports are available online at www.nass.usda.gov.