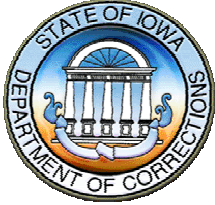
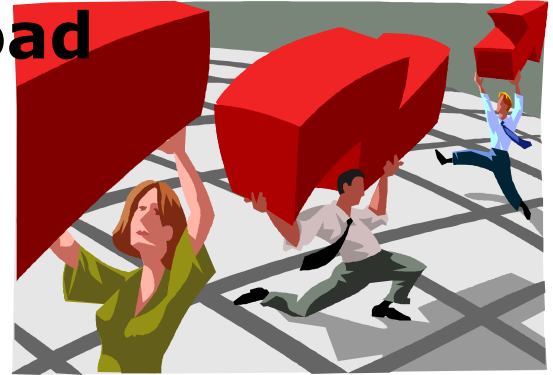


Lettie Prell  
Director of Research

Curt Smith  
Executive Assistant to the Director



## Data Download



### Violator Program: Community Aftercare is Key

Through an act of the Iowa Legislature, the Violator Program came into existence some 20 years ago, the purpose of which was to provide an alternative to long-term imprisonment for those offenders whose probation/parole had been suspended. This 4-6 month program is currently administered at three locations: Luster Heights, Newton Correctional Release Center, and the Iowa Correctional Institution for Women.

While the Violator Program made sense on paper, the Department found that it did not appreciably reduce recidivism. Learning that the research showed that proper and adequate aftercare is an integral part of any treatment success, the Department developed a Violator Program Aftercare (VPA) component to be provided once the offender returns to community supervision. In some cases, the returning offender was referred to a different program deemed more appropriate for his/her specific needs (e.g. Batterer's Education, Drug Court).

In an internal evaluation conducted during 2007, the Department found that 52.6% of those offenders who participated in VPA successfully completed the program. Of those, 34.6% returned to prison within three years. Below are charts comparing prison return rates for those successfully completing VPA with other categories of offenders:

<b>Comparison of Return Rates: Successful Completion of Aftercare vs. Those Not Receiving Aftercare</b>		
	<b>Return Rates:</b>	
<i>LSI-R Category</i>	<i>Successful Completion, Prison &amp; CBC Portions*</i>	<i>Successful Completion, Prison Portion: No Aftercare</i>
Low/Moderate	10.5%	66.7%
Moderate	30.3%	31.3%
Moderate/High	38.6%	44.4%
High	50.0%	63.6%
* Includes 11 offenders still participating in aftercare at end of the follow-up period.		

The mission of the Iowa Department of Corrections is to:  
**Protect the Public, the Employees, and the Offenders from Victimization.**

<b>Comparison of Return Rates: Successful Completion of Violator Program (Including Aftercare), vs. Return Rate for All Prison Exits</b>		
	<b>Return Rates:</b>	
<i>LSI-R Category</i>	<i>Successful Completion, Prison &amp; CBC Portions*</i>	<i>All Inmates Exiting Prison</i>
Low/Moderate	10.5%	29.9%
Moderate	30.3%	38.8%
Moderate/High	38.6%	38.9%
High	50.0%	45.9%
* Includes 11 offenders still participating in aftercare at end of the follow-up period.		

While the Violator Program and VPA are not magic bullets, they are viable sanctions that can cut the time offenders spend in prison, and thereby reduce use of prison beds and achieve positive results for offenders. The outcomes were also consistent with other analyses which show that continued treatment in the community is essential as a follow-up to prison-based programs.