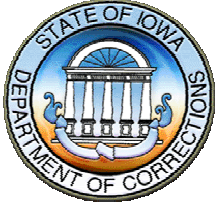
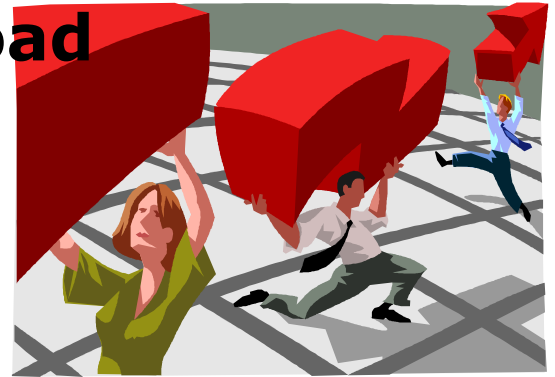


Lettie Prell
Director of Research

Curt Smith
Executive Assistant to the Director



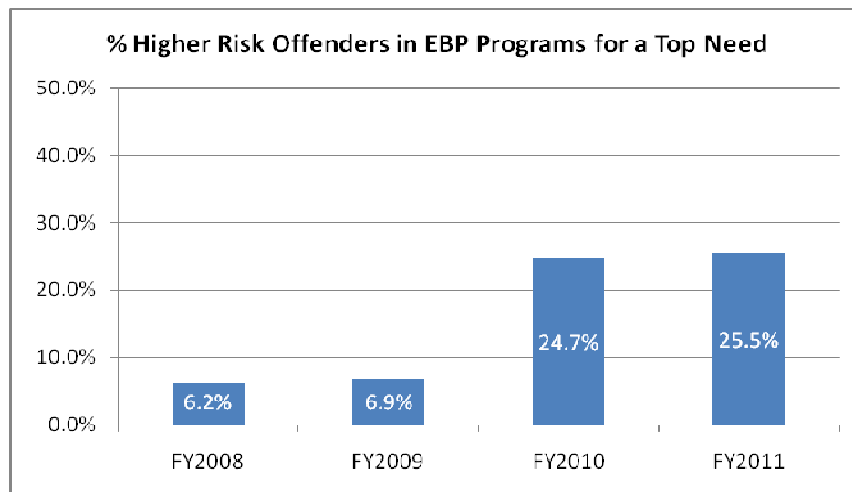
Data Download



Building Better Programs

Beginning in 2006, the Iowa Department of Corrections embarked on a systematic offender program audit at each of the state's institutions and community-based corrections agencies, the purpose of which was to determine each program's effectiveness as supported by results and research (evidence-based practices). Those programs demonstrating success were maintained, and all others either modified to comply with evidence-based practices or replaced by programming that did.

Starting with FY 2008, the Department began tracking the percentage of higher risk offenders that were receiving evidence-based interventions for their top criminogenic needs. These needs are determined after a battery of screenings and assessments, and jointly agreed to by the offender and case manager. As can be seen from reviewing the chart below, Iowa Corrections has made significant improvements in providing offenders with the right programming at the right time and at the right place.



While significant progress has been made, much more needs to be done in order to provide evidence-based programming to offenders in our institutions and receiving correctional supervision in the community. That resources to make such improvements are scarce underscores the importance of developing new partnerships and enhancing existing partnerships to leverage resources and develop a more seamless offender reentry process.