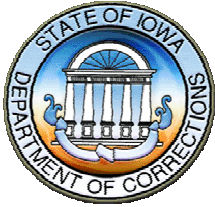
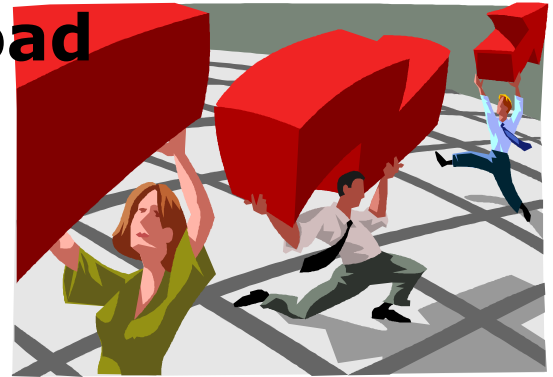


Lettie Prell
Director of Research

Curt Smith
Executive Assistant to the Director



Data Download



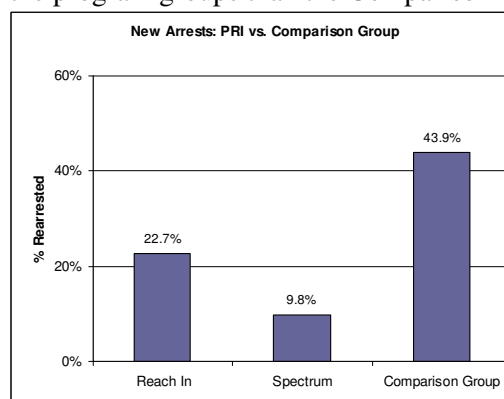
Evaluation Findings: Rural Reentry Program Works

Iowa's Division of Criminal and Juvenile Justice Planning (CJJP) recently completed an evaluation of the 2nd Judicial District's Rural Prisoner Reentry Initiative (PRI), which provided reentry services to offenders both while in prison and after release. For purposes of the evaluation, CJJP studied three groups:

- **Reach-In** – The core of the rural reentry model. The offender meets twice with the 2nd District Reentry Coordinator and prison counselor prior to release to finalize a transition plan (e.g. treatment and aftercare needs, employment prospects, housing). An appointment is set for the offender to meet with the 2nd District Parole Officer and Reentry Coordinator on the first day of release.
- **Spectrum Wraparound** – Those offenders meeting strict criteria, such as not having been convicted of a violent or sex-related crime, and who are over 18 years of age, received reentry services from this entity prior to release, and upon return to the community (e.g. job training, job placement). Due to the eligibility criteria, this group was comprised of lower risk offenders than the other two groups.
- **Comparison Group** – Offenders released before reentry services were provided by the District.

CJJP's findings include the following:

- The preparation work done while individuals are still in prison appears to be effective. Individuals in the program groups began their community interventions much earlier than did the Comparison Group.
- A higher rate of employment was found for the program groups than the Comparison Group.
- Offender risk levels decreased while under community supervision, especially for the Spectrum group.
- New arrests were lower for the program groups than the Comparison Group:



The CJJP evaluation is yet another demonstration that evidence-based offender reentry programming plays a critical role in reducing recidivism and improving public safety.

The full report, *Iowa Prisoner Re-Entry Initiative (PRI) Rural Service Delivery Model - Iowa Department of Correctional Services* (Iowa Division of Criminal & Juvenile Justice Planning, 2009) is available by contacting the DOC director of research (phone 515/725-5718 or email Lettie.Prell@iowa.gov).

The mission of the Iowa Department of Corrections is to:

Advance Successful Offender Reentry to Protect the Public, the Employees, and the Offenders from Victimization.