

# A d d e n d u m

Iowa Department of Transportation  
Office of Contracts

Date of Letting: July 17, 2012  
Date of Addendum: June 20, 2012

<b>B.O.</b>	<b>Proposal ID</b>	<b>Proposal Work Type</b>	<b>County</b>	<b>Project Number</b>	<b>Addendum</b>
305	77-0352-407	GRADING	POLK	IM-035-2(407)67--13-77	17JUL305.A01

---

Notice: Only the bid proposal holders receive this addendum and responsibility for notifying any potential subcontractors or suppliers remains with the proposal holder.

---

Make the following change to plan sheet C.1, Tabulation 100-4A:

For Item Code 2102-2710070 EXCAVATION, CLASS 10, ROADWAY AND BORROW add the following note:

Requires 4 settlement plates, refer to Tab 103-5 for locations and details.

Make the following change to plan sheet C.2, Tabulation 105-4:

Add Standard Road Plan RL-6, Dated 10-17-06

Make the following change to plan sheet C.4:

Add attached Tabulation 103-5

Make the following change to plan sheet Q.3:

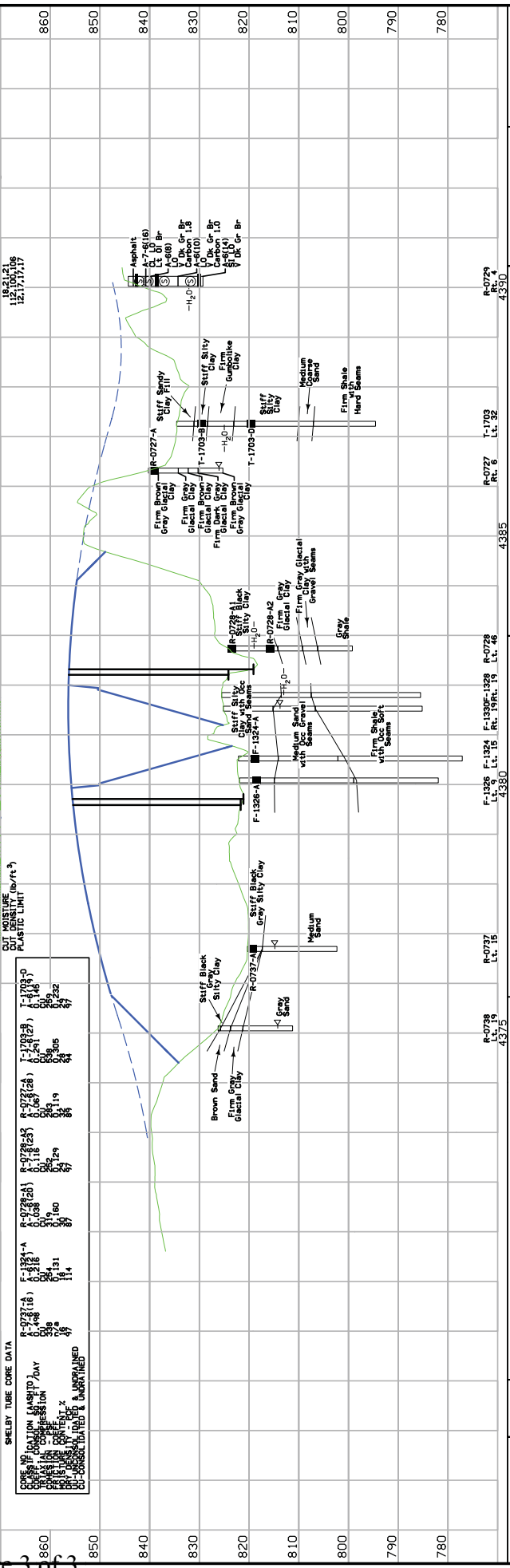
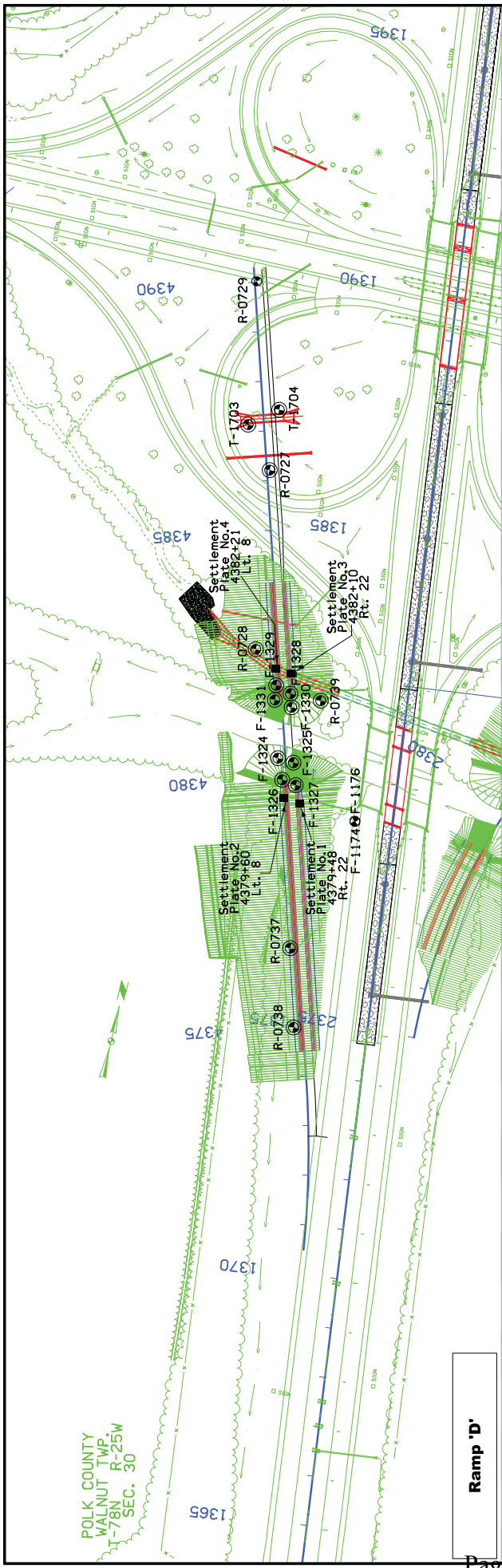
Replace plan sheet Q.3 with attached plan sheet Q.3

# SETTLEMENT PLATES

Refer to Standard Road Plan [RL-6](#)

This Data Entry Sheet fills Tab 103-5 effective 08-01-08

No.	Location		Remarks
	Station	Offset	
1	4379+48	Rt. 22	
2	4379+60	Lt. 8	
3	4382+10	Rt. 22	
4	4382+21	Lt. 8	



CUT MOISTURE  
CUT DENSITY (pcf/ft<sup>3</sup>)  
PLASTIC LIMIT

STATION	DEPTH (ft)	MOISTURE (%)	DENSITY (pcf/ft <sup>3</sup> )	PLASTIC LIMIT (%)
R-0727-A	0.00	11.4	114	19.4
R-0727-A	0.10	11.4	114	19.4
R-0727-A	0.20	11.4	114	19.4
R-0727-A	0.30	11.4	114	19.4
R-0727-A	0.40	11.4	114	19.4
R-0727-A	0.50	11.4	114	19.4
R-0727-A	0.60	11.4	114	19.4
R-0727-A	0.70	11.4	114	19.4
R-0727-A	0.80	11.4	114	19.4
R-0727-A	0.90	11.4	114	19.4
R-0727-A	1.00	11.4	114	19.4
R-0727-A	1.10	11.4	114	19.4
R-0727-A	1.20	11.4	114	19.4
R-0727-A	1.30	11.4	114	19.4
R-0727-A	1.40	11.4	114	19.4
R-0727-A	1.50	11.4	114	19.4
R-0727-A	1.60	11.4	114	19.4
R-0727-A	1.70	11.4	114	19.4
R-0727-A	1.80	11.4	114	19.4
R-0727-A	1.90	11.4	114	19.4
R-0727-A	2.00	11.4	114	19.4
R-0727-A	2.10	11.4	114	19.4
R-0727-A	2.20	11.4	114	19.4
R-0727-A	2.30	11.4	114	19.4
R-0727-A	2.40	11.4	114	19.4
R-0727-A	2.50	11.4	114	19.4
R-0727-A	2.60	11.4	114	19.4
R-0727-A	2.70	11.4	114	19.4
R-0727-A	2.80	11.4	114	19.4
R-0727-A	2.90	11.4	114	19.4
R-0727-A	3.00	11.4	114	19.4
R-0727-A	3.10	11.4	114	19.4
R-0727-A	3.20	11.4	114	19.4
R-0727-A	3.30	11.4	114	19.4
R-0727-A	3.40	11.4	114	19.4
R-0727-A	3.50	11.4	114	19.4
R-0727-A	3.60	11.4	114	19.4
R-0727-A	3.70	11.4	114	19.4
R-0727-A	3.80	11.4	114	19.4
R-0727-A	3.90	11.4	114	19.4
R-0727-A	4.00	11.4	114	19.4
R-0727-A	4.10	11.4	114	19.4
R-0727-A	4.20	11.4	114	19.4
R-0727-A	4.30	11.4	114	19.4
R-0727-A	4.40	11.4	114	19.4
R-0727-A	4.50	11.4	114	19.4
R-0727-A	4.60	11.4	114	19.4
R-0727-A	4.70	11.4	114	19.4
R-0727-A	4.80	11.4	114	19.4
R-0727-A	4.90	11.4	114	19.4
R-0727-A	5.00	11.4	114	19.4
R-0727-A	5.10	11.4	114	19.4
R-0727-A	5.20	11.4	114	19.4
R-0727-A	5.30	11.4	114	19.4
R-0727-A	5.40	11.4	114	19.4
R-0727-A	5.50	11.4	114	19.4
R-0727-A	5.60	11.4	114	19.4
R-0727-A	5.70	11.4	114	19.4
R-0727-A	5.80	11.4	114	19.4
R-0727-A	5.90	11.4	114	19.4
R-0727-A	6.00	11.4	114	19.4
R-0727-A	6.10	11.4	114	19.4
R-0727-A	6.20	11.4	114	19.4
R-0727-A	6.30	11.4	114	19.4
R-0727-A	6.40	11.4	114	19.4
R-0727-A	6.50	11.4	114	19.4
R-0727-A	6.60	11.4	114	19.4
R-0727-A	6.70	11.4	114	19.4
R-0727-A	6.80	11.4	114	19.4
R-0727-A	6.90	11.4	114	19.4
R-0727-A	7.00	11.4	114	19.4