

IOWA

Motorcycle

OPERATOR MANUAL



STATE LIBRARY OF IOWA



3 1723 02022 0182

MOTORCYCLES MAKE SENSE — SO DOES PROFESSIONAL TRAINING

They are inexpensive to operate, fun to ride and easy to park. Unfortunately, many riders never learn the critical skills needed to ride safely.

Professional training for beginning and experienced riders prepares them for real-world traffic situations. *Motorcycle RiderCourses* teach and improve skills such as:

- effective turning
- braking maneuvers
- protective apparel selection
- obstacle avoidance
- traffic strategies
- maintenance

**FOR THE BEGINNING OR EXPERIENCED *RiderCourse*
NEAREST YOU, CALL TOLL FREE:
800-447-4700**

Printing and Distribution
Courtesy of



MOTORCYCLE SAFETY FOUNDATION
2 Jenner Street, Suite 150
Irvine, Ca 92718-3812

Second Revision - December 1978

Third Revision - February 1981

Fourth Revision - January 1983

Fifth Revision - October 1987

Sixth Revision - April 1991

Printed in U.S.A.

The Motorcycle Safety Foundation's purpose is improving the safety of motorcyclists on the nation's streets and highways. In an attempt to reduce motorcycle accidents and injuries, the Foundation has programs in rider education, licensing improvement, public information and statistics. These programs are designed for both motorcyclists and motorists. A national, non-profit organization, MSF is sponsored by five U.S. motorcycle distributors: Honda, Yamaha, Kawasaki, Suzuki and BMW.

The information contained in this publication is offered for the benefit of those who have an interest in riding motorcycles. The information has been compiled from publications, interviews and observations of individuals and organizations familiar with the use of motorcycles, accessories, and training. Because there are many differences in product design, riding styles, Federal, State and local laws, there may be organizations and individuals who hold differing opinions. Consult your local regulatory agencies for information concerning the operation of motorcycles in your area. Although the Motorcycle Safety Foundation will continue to research, field test and publish responsible viewpoints on the subject, it disclaims any liability for the views expressed herein.

Form H-2094
PM 567 10-23-92



PREFACE

MAR 25 1995

ATTENTION FUTURE MOTORCYCLE RIDERS

This manual has been developed in cooperation with the Motorcycle Safety Foundation to help you prepare to safely ride a motorcycle. We believe it will also assist you in being a knowledgeable and courteous rider on our streets and highways.

While you are studying this manual, take note of the tips for safe riding. Other drivers do not always see motorcycle riders. It is your responsibility to help the motoring public be aware of you, the motorcyclist, on the road. Remember those tips when you're riding. They can help you stay alive and make your riding more enjoyable.

In 1991 there were 128,913 motorcycles registered in Iowa, and there were 38 deaths in Iowa involving motorcycles. Our goal is to lower the number of motorcycle-related deaths on Iowa highways. We can do this with your help.

We welcome you to the world of motorcycling. Ride carefully.

Darrel Rensink, Director
Iowa Department of Transportation

STATE LIBRARY OF IOWA

DES MOINES, IOWA 50319

PERMANENT DRIVER LICENSE STATIONS

Ames

North Grand Mall
Ames, IA 50010
(515) 232-7325

Cedar Rapids

152 Collins Rd. NE
Cedar Rapids, IA 52404
(319) 377-6461

Council Bluffs

1714 W. Broadway, Suite 4
Council Bluffs, IA 51501
(712) 323-1219

Davenport

Kimberly West Shopping Center
2162 W. Kimberly Road
Davenport, IA 52806
(319) 386-1050

Des Moines

Park Fair Mall, 100 E. Euclid
Des Moines, IA 50306
(515) 244-1052

Dubuque

Asbury Square Shopping Center
2255 JFK Road
Dubuque, IA 52001
(319) 583-9844

Iowa City

Eastdale Mall
1700 First Ave.
Iowa City, IA 52240
(319) 338-5294

Sioux City

3005 Hamilton Blvd.
Sioux City, IA 51104
(712) 255-5539

Waterloo

214 Crossroad Center
Waterloo, IA 50102
(319) 235-0902

TABLE OF CONTENTS

PREPARING TO RIDE

WEAR THE RIGHT GEAR	1
Helmet Use	1
Helmet Selection	2
Eye and Face Protection	2
Clothing	3
KNOW YOUR MOTORCYCLE	4
The Right Motorcycle for You	4
Borrowing and Lending	4
Get Familiar with the Motorcycle Controls	5
Check Your Motorcycle	6
KNOW YOUR RESPONSIBILITIES	7

RIDE WITHIN YOUR ABILITIES

BASIC VEHICLE CONTROL	8
Body Position	8
Shifting Gears	9
Braking	9
Turning	10
KEEPING YOUR DISTANCE	
Lane Positions	11
Following Another Vehicle	12
Being Followed	12
Passing and Being Passed	14
Lane Sharing	15
Merging Cars	16
Cars Alongside	16
SIPDE	17
INTERSECTIONS	19
Blind Intersections	20
Passing Parked Cars	21
Parking at the Roadside	21
SEE AND BE SEEN	22
Clothing	22
Headlight	22
Signals	23
Brake Light	23
Using Your Mirrors	24
Head Checks	24
Horn	25
Riding at Night	25
COLLISION AVOIDANCE	26
Quick Stops	26
Swerving or Turning Quickly	27
Riding a Curve	28

HANDLING DANGEROUS SURFACES	29
Uneven Surfaces and Obstacles	29
Slippery Surfaces	30
Tracks, Grooves and Gratings	31
MECHANICAL PROBLEMS	32
Tire Failure	32
Stuck Throttle	32
Wobble	32
Chain Problems	33
Engine Seizure	33
ANIMALS	34
FLYING OBJECTS	34
GETTING OFF THE ROAD	34
CARRYING PASSENGERS AND CARGO	35
Equipment	35
Instructing Passengers	35
Riding with Passengers	36
Carrying loads	36
GROUP RIDING	37
Keep the Group Small	37
Keep the Group Together	37
Keep Your Distance	37
BEING IN SHAPE TO RIDE	
WHY THIS INFORMATION IS IMPORTANT	39
ALCOHOL AND OTHER DRUGS IN MOTORCYCLE	
OPERATION	40
ALCOHOL IN THE BODY	40
Blood Alcohol Concentration	40
ALCOHOL AND THE LAW	42
Consequences of Conviction	42
IOWA SUMMARY	42
MINIMIZE THE RISKS	
Control Drinking	43
Control Riding	43
STEP IN TO PROTECT FRIENDS	43
FATIGUE	44
EARNING YOUR LICENSE	
KNOWLEDGE TEST	45
ON-CYCLE SKILL TEST	46

PREPARING TO RIDE

What you do before you start a trip goes a long way toward determining whether or not you'll get where you want to go safely. Before taking off on any trip, a safe rider makes a point to:

- wear the right gear.
- check the motorcycle equipment.
- become familiar with the motorcycle.

WEAR THE RIGHT GEAR

When you ride, your gear is "right" if it protects you. In any collision, you have a far better chance of avoiding serious injury if you wear:

- an approved helmet.
- face or eye protection.
- protective clothing.

Helmet Use

Collisions are not rare events — particularly among beginning riders. And one out of every five motorcycle collisions result in head or neck injuries. Head injuries are just as severe as neck injuries — and far more common. Accident analyses show that head and neck injuries account for a majority of serious and fatal injuries to motorcyclists. Research also shows that, with few exceptions, head and neck injuries are reduced by the proper wearing of an approved helmet.

Some riders don't wear helmets because they think helmets will limit their view to the sides. Others wear helmets only on long trips or when riding at high speeds. Here are some facts to consider:

- An approved helmet lets you see as far to the sides as necessary. A study of more than 900 motorcycle collisions, where 40% of the riders wore helmets, did not find even one case in which a helmet kept a rider from spotting danger.
- Most collisions happen on short trips (less than five miles long), just a few minutes after starting out.
- Most riders are riding slower than 30 mph when a collision occurs. At these speeds, helmets can cut both the number and the severity of head injuries by half.

No matter what the speed, helmeted riders are three times more likely to survive head injuries than those not wearing helmets at the time of the collision.

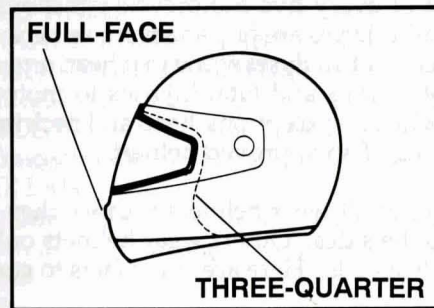
Helmet Selection

There are two primary types of helmets, providing two different levels of coverage: three-quarter and full face.

Whichever style you choose, you can get the most protection by making sure that the helmet:

- meets U.S. Department of Transportation (DOT) and state standards. Helmets with labels from the American National Standards Institute (ANSI) or the Snell Memorial Foundation give you an added assurance of quality.
- fits snugly, all the way around.
- has no obvious defects such as cracks, loose padding or frayed straps.

Whatever helmet you decide on, keep it securely fastened on your head when you ride. Otherwise, if you are involved in a collision, it's likely to fly off your head before it gets a chance to protect you.



Eye and Face Protection

A plastic faceshield can help protect your whole face in a collision. It also protects you from wind, dust, dirt, rain, insects, and pebbles thrown up from cars ahead. These problems are distracting and can be painful. If you have to deal with them, you can't devote your full attention to the road.

Goggles protect your eyes, though they won't protect the rest of your face like a faceshield does. A windshield is not a substitute for a faceshield or goggles. Most windshields will not protect your eyes from the wind. Neither will eyeglasses or sunglasses. Glasses won't keep your eyes from watering, and they might blow off when you turn your head while riding.

To be effective, eye or faceshield protection must:

- Be free of scratches.
- Be made of shatter-proof material.
- Give a clear view to either side.
- Fasten securely, so it does not blow off.
- Permit air to pass through, to reduce fogging.
- Permit enough room for eyeglasses or sunglasses, if needed.

Tinted eye protection should not be worn at night or any other time when little light is available.

Clothing

The right clothing protects you in a collision.

Jacket and pants should cover arms and legs completely. They should fit snugly enough to keep from flapping in the wind, yet loosely enough to move freely. Leather offers the most protection, but heavy denim usually does an adequate job at a reasonable price. Sturdy synthetic material provides a lot of protection as well. Wear a jacket even in warm weather. Many are designed to protect without getting you overheated, even on summer days.

Boots or shoes should be high and sturdy enough to cover your ankles and give them support. Soles should be made of hard, durable material. Keep heels short so they do not catch on rough surfaces. Tuck laces in so they won't catch on your motorcycle.

Gloves allow a better grip and help protect your hands in a collision. Your gloves should be made of leather or heavy cloth.

In cold or wet weather, your clothes should keep you warm and dry, as well as protect you from injury. You cannot control a motorcycle well if you are numb. Riding for long periods in cold weather can cause severe chill and fatigue. A winter jacket should resist wind and fit snugly at the neck, wrists, and waist. Good-quality rainsuits designed for motorcycle riding resist tearing apart or ballooning up at high speeds.

1. A plastic face shield:

- A. is not necessary if you have a windshield.
- B. only protects your eyes.
- C. helps protect your whole face.
- D. does not protect your face as well as goggles.

KNOW YOUR MOTORCYCLE

There are plenty of things on the highway that can cause you trouble. Your motorcycle should not be one of them. To make sure that your motorcycle won't let you down:

- Start with the right motorcycle for you.
- Be familiar with the motorcycle controls.
- Check the motorcycle before every ride.
- Keep it in safe riding condition between rides.
- Avoid add-ons and modifications that make your cycle harder to handle.

The Right Motorcycle For You

First, make sure your motorcycle is right for you. It should "fit" you. Your feet should reach the ground while you are seated on the cycle.

At minimum, your street-legal cycle should have:

- Headlight, taillight and brakelight
- Front and rear brakes
- Turn signals
- Horn
- Two mirrors

Borrowing and Lending

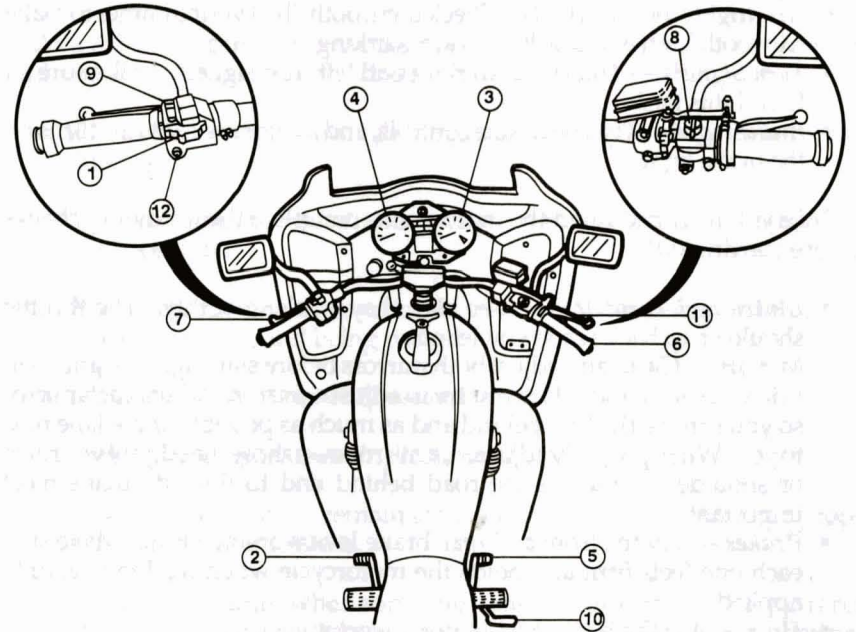
Borrowers and lenders of motorcycles, beware. Collisions are fairly common among beginning riders—especially in the first months of riding. Riding an unfamiliar cycle adds to the problem. If you borrow a motorcycle, get familiar with it in a controlled area. And if you lend your motorcycle to friends, make sure they are licensed and know how to ride before allowing them out into traffic.

No matter how experienced you may be, ride extra carefully on any bike that's new or unfamiliar to you. More than half of all collisions occur on motorcycles ridden by the operator for less than six months.

Get Familiar with the Motorcycle Controls

Make sure you are completely familiar with the motorcycle before you take it out on the street. This is particularly important if you are riding a borrowed cycle. If you are going to use an unfamiliar motorcycle:

- Make all the checks you would on your own cycle.
- Find out where everything is, particularly the turn signals, horn, headlight switch, fuel-control valve, and engine cut-off switch. Find and operate these items without having to look for them.
- Know the gear pattern. Work the throttle, clutch, and brakes a few times before you start riding. All controls react a little differently.
- Ride very cautiously. Accelerate gently, take turns more slowly, and leave extra room for stopping.



- | | |
|---------------------------|--------------------------|
| 1. Turn-Signal Switch | 7. Clutch Lever |
| 2. Gear-Change Lever | 8. Engine Cut-Off Switch |
| 3. Tachometer | 9. Light Switch |
| 4. Speedometer & Odometer | 10. Kick Starter |
| 5. Rear Brake Pedal | 11. Front Brake Lever |
| 6. Throttle | 12. Horn Button |

Check Your Motorcycle

A motorcycle needs more frequent attention than a car. A minor technical failure in a car seldom leads to anything more than an inconvenience for the driver.

If something's wrong with the motorcycle, you'll want to find out about it before you get in traffic. Make a complete check of your motorcycle before every ride.

Before mounting the motorcycle make the following checks:

- **Tires** — Check the air pressure.
- **Fluids** — Oil and fluid levels. At a minimum, check hydraulic fluids and coolants weekly. Look under the bike for signs of an oil or gas leak.
- **Headlights and Taillight** — Check them both. Test your dimmer to make sure both high and low beams are working.
- **Turn Signals** — Turn on both right and left turn signals. Make sure all four lights flash.
- **Brake Light** — Try both brake controls, and make sure each one turns on the brake light.

Once you have mounted the motorcycle, complete the following checks before starting out:

- **Clutch and Throttle** — Make sure they work smoothly. The throttle should snap back when you let go.
- **Mirrors** — Clean and adjust both mirrors before starting. It's difficult to ride with one hand while you try to adjust a mirror. Adjust each mirror so you can see the lane behind and as much as possible of the lane next to you. When properly adjusted, a mirror may show the edge of your arm or shoulder — but it's the road behind and to the side that's most important.
- **Brakes** — Try the front and rear brake levers one at a time. Make sure each one feels firm and holds the motorcycle when the brake is fully applied.
- **Horn** — Try the horn. Make sure it works.

In addition to the checks you should make before every trip, check the following items at least once a week: Wheels, cables, and fasteners.

2. More than half of all collisions:

- occur at speeds greater than 35 mph.
- happen at night.
- are caused by worn tires.
- involve riders who have ridden their cycles less than six months.

KNOW YOUR RESPONSIBILITIES

“Accident” implies an unforeseen event that occurs without anyone's fault or negligence. Most often in traffic, that is not the case. In fact, most people involved in a collision can usually claim some responsibility for what takes place.

Consider a situation where someone decides to try to squeeze through an intersection on a yellow light turning red. Your light turns green. You pull into the intersection without checking for possible latecomers. That is all it takes for the two of you to tangle. It was the driver's responsibility to stop. And it was your responsibility to look before pulling out. Neither of you held up your end of the deal. Just because someone else is the first to start the chain of events leading to a collision, it doesn't leave any of us free of responsibility.

As a rider you can't be sure that other operators will see you or yield the right of way. To lessen your chances of a collision occurring:

- **Be visible** — wear proper clothing, use your headlight, ride in the best lane position.
- **Communicate your intentions** — use the proper signals, brake light, and lane position.
- **Maintain an adequate space cushion** — following, being followed, lane sharing, passing and being passed.
- **Scan your path of travel 12 seconds ahead.**
- **Identify and separate multiple hazards.**
- **Be prepared to act** — remain alert and know how to carry out proper collision-avoidance skills.

Blame doesn't matter when someone is injured in a crash. There is rarely a single cause of any collision. The ability to ride aware, make critical decisions, and carry them out separates responsible riders from all the rest. Remember, it is up to you to keep from being the cause of, or an unprepared participant in, any collision.

RIDE WITHIN YOUR ABILITIES

This Manual cannot teach you how to control direction, speed, or balance. That's something you can learn only through practice. But control begins with knowing your abilities and riding within them and the rules of the road.

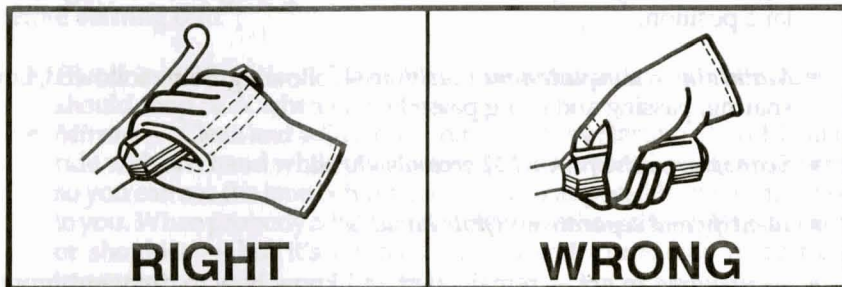
BASIC VEHICLE CONTROL

Body Position

To control a motorcycle well:

Seat — Sit far enough forward so that arms are slightly bent when you hold the handlegrips. Bending your arms permits you to turn the handlebars without having to stretch.

Hands — Hold the handlegrips firmly to keep your grip over rough surfaces. Start with your right wrist flat. This will help you keep from accidentally using too much throttle—especially if you need to reach for the brake suddenly. Also, adjust the handlebars so your hands are even with or below your elbows. This permits you to use the proper muscles for precision steering.



Knees — Keep your knees against the gas tank to help you keep your balance as the motorcycle turns.

Feet — Keep your feet firmly on the footpegs to maintain balance. Don't drag your feet. If your foot catches on something, you can be injured and it could affect your control of the motorcycle. Keep your feet near the controls so you can get to them fast if needed. Also, don't let your toes point downward — they may get caught between the road and the footpegs.

Posture — Sit so you can use your arms to steer the motorcycle rather than to hold yourself up.

Shifting Gears

There is more to shifting gears than simply getting the motorcycle to pick up speed smoothly. Learning to use the gears correctly when downshifting, turning, or starting on hills is important for safe motorcycle operation.

Shift down through the gears as you slow or stop. Remain in first gear while you are stopped so that you can move out quickly if you need to.

Make certain you are riding slowly enough when you shift into a lower gear. If not, the motorcycle will lurch, and the rear wheel may skid. When riding downhill or shifting into first gear you may need to use the brakes to slow enough before downshifting safely.

It is best to change gears before entering a turn. However, sometimes shifting while in the turn is necessary. If so, remember to do so smoothly. A sudden change in power to the rear wheel can cause a skid.

Braking

Your motorcycle has two brakes: one each for the front and rear wheel. Use both of them at the same time. The front brake is more powerful and can provide as much as three-quarters of your total stopping power. The front brake is safe to use if you use it properly. Remember:

- Use both brakes *every time* you slow or stop. Using only the rear brake for "normal" stops will not permit you to develop the habit or skill of using the front brake properly in an emergency. Squeeze the front brake and press down on the rear. Grabbing at the front brake or jamming down on the rear can cause the brakes to lock, resulting in control problems.
- Apply both brakes *at the same time*. The sooner you apply the front brake, the sooner it will start slowing you down.
- If you know the technique, using both brakes in a turn is possible, although it should be done very carefully. When leaning the motorcycle some of the traction is used for cornering. Less traction is available for stopping. A skid can occur if you apply too much brake. Also, using the front brake incorrectly on a slippery surface may be hazardous. Use caution and squeeze the brake lever.
- Some motorcycles have integrated braking systems that link the front and rear brakes together by applying the rear brake pedal. (Consult the owner's manual for a detailed explanation on the operation and effective use of these systems.)

Turning

Riders often try to take curves or turns too fast. When they can't hold the turn, they end up crossing into another lane of traffic or going off the road. Or, they overreact and brake too hard, causing a skid and loss of control. Approach turns and curves with caution.

Use four steps for better control:

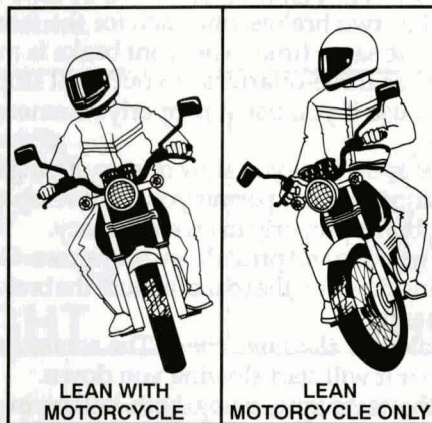
- SLOW
- LOOK
- LEAN
- ROLL

SLOW — Reduce speed before the turn by closing the throttle and, if necessary, applying both brakes.

LOOK — Look through the turn to where you want to go. Turn just your head, not your shoulders, and keep your eyes level with the horizon.

LEAN — To turn, the motorcycle must lean. To lean the motorcycle, push on the handgrip in the direction of the turn. Push left — lean left — go left. Push right — lean right — go right. Higher speeds and/or tighter turns require the motorcycle to lean more.

In normal turns, the rider and the motorcycle should lean together at the same angle.



In slow tight turns, lean the motorcycle only and keep your body straight.

ROLL — Roll on the throttle through the turn. Maintain steady speed or accelerate gradually. Avoid decelerating in the turn.

3. When riding, you should:

- turn your head and shoulders to look through turns.
- keep your arms straight.
- keep your knees away from the gas tank.
- turn just your head and eyes to look where you are going.

KEEPING YOUR DISTANCE

The best protection you can have is distance — a “cushion of space” — all around your cycle. If someone else makes a mistake, distance permits you:

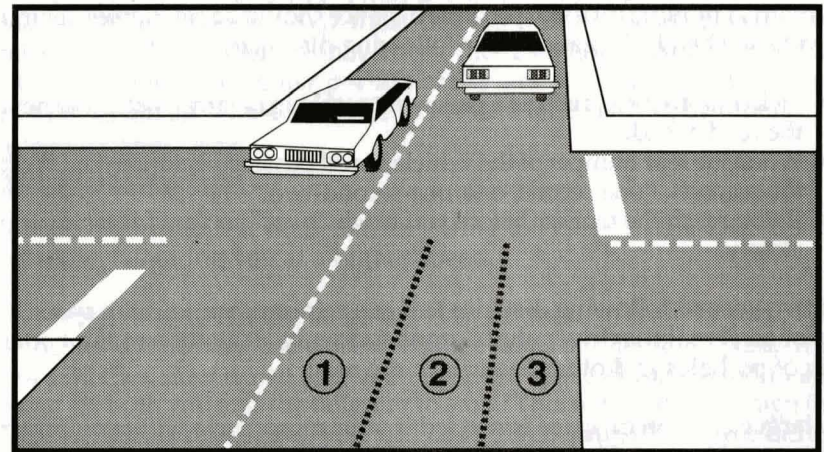
- time to react.
- room to maneuver.

Lane Positions

In some ways the size of the motorcycle can work to your advantage. Each traffic lane gives a motorcycle three paths of travel, as indicated in the illustration.

Your lane position should:

- increase your ability to see and be seen.
- avoid other's blind spots.
- avoid surface hazards.
- protect your lane from other drivers.
- communicate your intentions.
- avoid wind blast from other vehicles.
- provide an escape route.



Select the appropriate path to maximize your space cushion and make yourself more easily seen by others on the road.

In general, there is no single best position for riders to be seen and to maintain a space cushion around the cycle. No portion of the lane need be avoided — including the center.

Position yourself in the portion of the lane where you are most likely to be seen and you can maintain a space cushion around you. Change position as traffic situations change. Ride in path 2 or 3 if vehicles and other potential problems are on your left only. Remain in path 1 or 2 if hazards are on your right only. If vehicles are being operated on both sides of you, the center of the lane, path 2, is usually your best option.

Unless the road is wet, the average center strip permits adequate traction to ride on safely. The strip in the center portion of the lane that collects drippings from cars is usually no more than two feet wide. You can operate to the left or right of this strip and still be within the center portion of the traffic lane. Big buildups of oil and grease are usually found at busy intersections or toll booths.

Following Another Vehicle

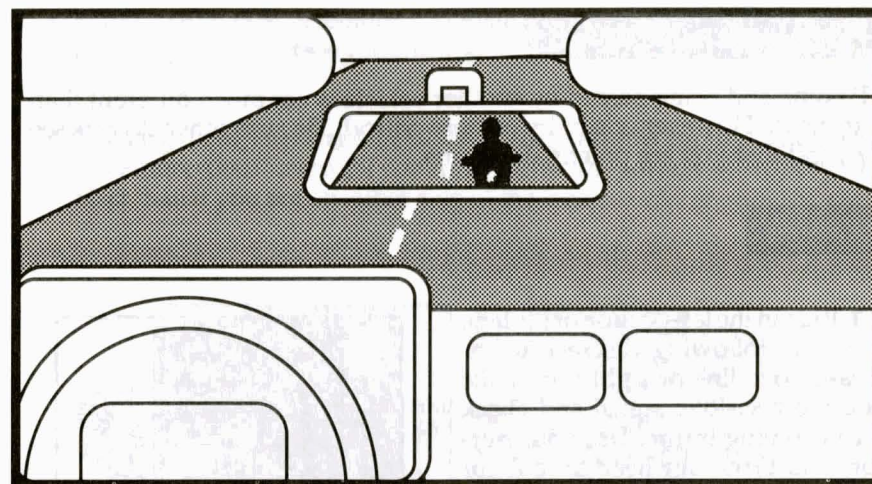
“Following too closely” is a major factor in collisions caused by motorcyclists. In traffic, motorcycles need as much distance to stop as cars. Normally, a minimum of two seconds distance should be *maintained* behind the vehicle ahead. To gauge your following distance:

- Pick out a marker, such as a pavement marking or lamppost, on or near the road ahead.
- When the rear bumper of the vehicle ahead passes the marker, count off the seconds: “one-second-one, one-second-two.”
- If you reach the marker before you reach “two,” you are following too closely.

A two-second following distance leaves a minimum amount of space to stop or swerve if the driver ahead stops suddenly. It also permits a better view of potholes and other hazards in the road.

A larger cushion of space is needed if your motorcycle will take longer than normal to stop. If the pavement is slippery, if you cannot see through the vehicle ahead, or if traffic is heavy and someone may squeeze in front of you, open up a three second or more following distance.

Keep well behind the vehicle ahead even when you are stopped. This will make it easier to get out of the way if someone bears down on you from behind. It will also give you a cushion of space if the vehicle ahead starts to back up for some reason.



When behind a car, ride where the driver can see you in the rearview mirror. Riding in the center portion of the lane should put your image in the middle of the rearview mirror — where a driver is most likely to see you.

Riding at the far side of a lane may permit a driver to see you in a sideview mirror. But remember that most drivers don't look at their sideview mirrors nearly as often as they check the rearview mirror. If the traffic situation allows, the center portion of the lane is the best place for you to be seen by the drivers ahead and to prevent lane sharing by others.

Being Followed

Speeding up to lose someone following too closely only ends up with someone tailgating you at a higher speed.

A better way to handle tailgaters is to get them in front of you. When someone is following too closely, change lanes and let them pass. If you can't do this, slow down and open up extra space ahead of you to allow room for both you and the tailgater to stop. This will also encourage them to pass. If they don't pass, you will have given yourself and the tailgater more time and space to react in case an emergency does develop.

Passing and Being Passed

Passing and being passed by another vehicle is not much different than with a car. However, visibility is more critical. Be sure other drivers see you, and that you see potential hazards.

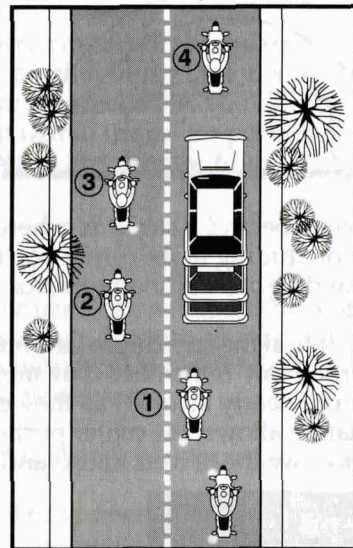
Passing

1. Ride in the left portion of the lane at a safe following distance to increase your line of sight and make you more visible. Signal and check for oncoming traffic. Use your mirrors and turn your head to look for traffic behind.

2. Move into the left lane and accelerate. Select a lane position that doesn't crowd the car you are passing and provides space to avoid hazards in your lane.

3. Ride through the blind spot as quickly as possible.

4. Signal again, and complete mirror and headchecks before returning to your original lane.



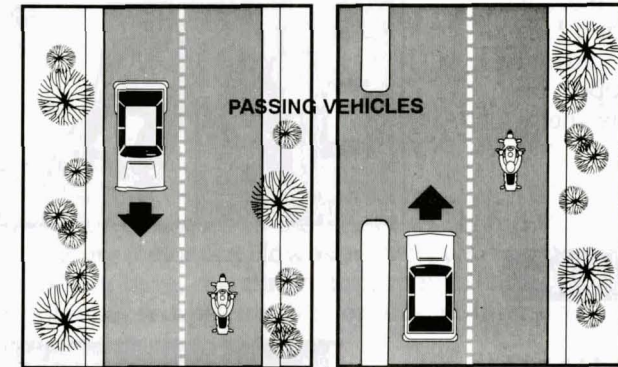
Remember, passes must be completed within posted speed limits, and only where permitted. Know your signs and road markings!

Being Passed

When you are being passed from behind or by an oncoming vehicle, stay in the center portion of your lane. Riding any closer to them could put you in a hazardous situation. Avoid being hit by:

- **The other vehicle** — A slight mistake by you or the passing driver could cause a sideswipe.
- **Extended mirrors** — Some drivers forget that their mirrors hang out farther than their fenders.

- **Objects thrown from windows** — Even if the driver knows you're there, a passenger may not see you and might toss something on you or the road ahead of you.
- **Blasts of wind from larger vehicles** — They can affect your control. You have more room for error if you are in the middle portion when hit by this blast than if you are on either side of the lane.



Do not move into the portion of the lane farthest from the passing vehicle. It might invite the other driver to cut back into your lane too early.

Lane Sharing

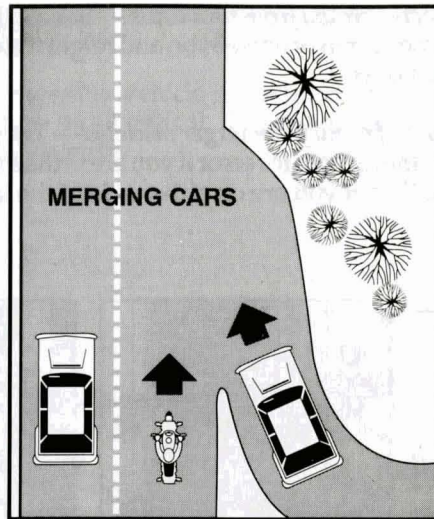
Cars and motorcycles need a full lane to operate safely. Lane sharing is usually prohibited.

Riding between rows of stopped or moving cars in the same lane can leave you vulnerable to the unexpected. A hand could come out of a window; a door could open; a car could turn suddenly. Discourage lane sharing by others. Keep a center-portion position whenever drivers might be tempted to squeeze by you. Drivers are most tempted to do this:

- In heavy, bumper-to-bumper traffic.
- When they want to pass you.
- When you are preparing to turn at an intersection.
- When you are getting in an exit lane, or leaving a highway.

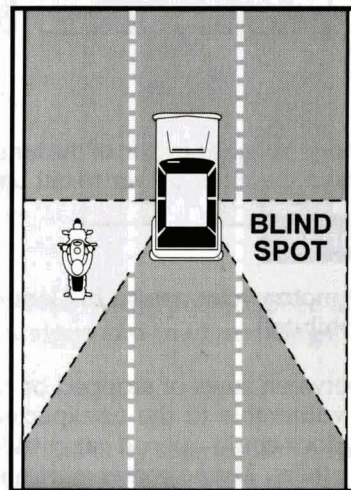
Merging Cars

Drivers on an entrance ramp may not see you on the highway. Give them plenty of room. Change to another lane if one is open. If there is no room for a lane change, adjust speed to open up space for the merging driver.



Cars Alongside

Do not ride next to cars or trucks in other lanes if you do not have to. You might be in the blind spot of a car in the next lane, which could switch into your lane without warning. Cars in the next lane also block your escape if you come upon danger in your own lane. Speed up or drop back to find a place clear of traffic on both sides.



4. Usually, a good way to handle tailgaters is to:
- change lanes and let them pass.
 - use your horn and make obscene gestures.
 - speed up to put distance between you and the tailgater.
 - ignore them.

SIPDE

Good experienced riders remain aware of what is going on around them. They improve their riding strategy by using SIPDE, a 5-step process used to make appropriate judgments, and apply them correctly in different traffic situations:

- Scan
- Identify
- Predict
- Decide
- Execute

Let's examine each of these steps.

Scan

Search aggressively ahead, to the sides and behind to avoid potential hazards even before they arise. How assertively you search, and how much time and space you have, can eliminate or reduce harm. Focus even more on finding potential escape routes in or around intersections, shopping areas, school and construction zones.

Search for:

- Oncoming traffic that may turn left in front of you.
- Traffic coming from the left and right.
- Traffic approaching from behind.

Be especially alert in areas with limited visibility. Visually "busy" surroundings could hide you and your motorcycle from others.

Identify

Locate hazards and potential conflicts.

- **Vehicles and other motorcycles** — may move into your path and increase collision impact.
- **Pedestrians and animals** — are unpredictable, and make short, quick moves.
- **Stationary objects** — potholes, guard rails, bridges, roadway signs, hedges, or trees won't move into your path but may influence your riding strategy.

Predict

Consider speed, distance, and direction of hazards to anticipate how they may affect you. Cars moving into your path are more critical than those moving away or remaining stationary.

Predict where a collision may occur. Completing this “what if...?” phase to estimate results of contacting or attempting to avoid a hazard depends on your knowledge and experience.

Decide

Decide when, where, and how to act based on types of hazards you encounter:

- Single Hazard
- Multiple Hazards
- Stationary
- Moving

Weigh consequences of each hazard separately, whether single or multiple hazards are involved.

Execute

In high potential risk areas, such as intersections, shopping areas, school and construction zones, cover the clutch and both brakes to reduce the time you need to react.

To create more space and minimize harm from any hazard:

- Communicate your presence with lights and/or horn.
- Adjust your speed by accelerating, stopping or slowing.
- Adjust your position and/or direction.

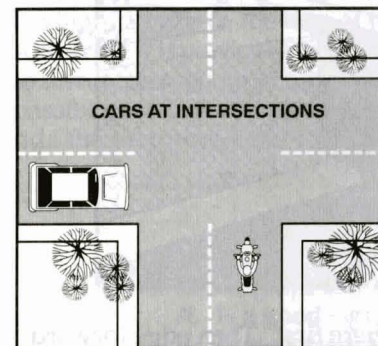
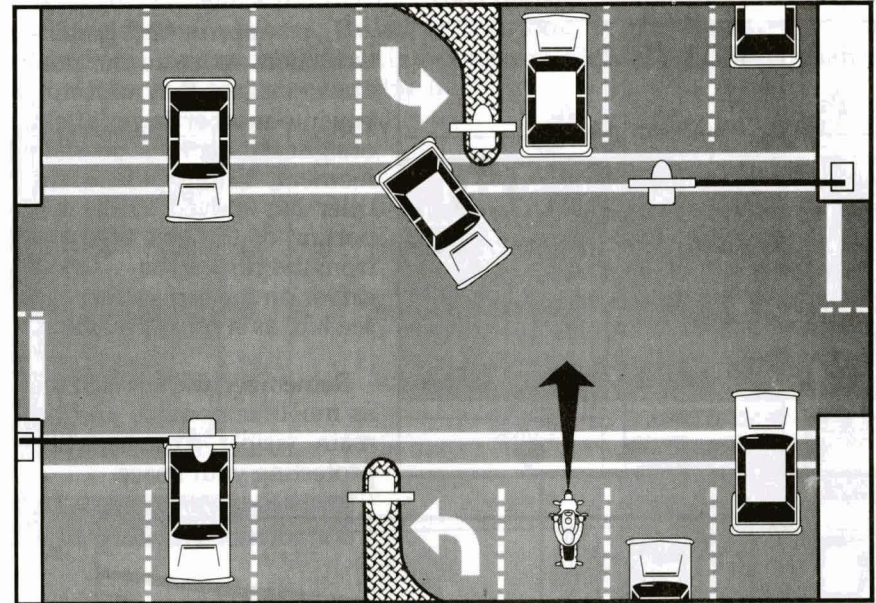
Apply the old adage “one step at a time” to handle two or more hazards. Adjust speed to permit two hazards to separate. Then deal with them one at a time as single hazards. Decision making becomes more complex with three or more hazards. Weigh consequences of each and give equal distance to the hazards.

5. To reduce your reaction time, you should:

- ride slower than the speed limit.
- cover the clutch and the brakes.
- shift into neutral when slowing.
- pull in the clutch when turning.

INTERSECTIONS

The greatest potential for conflict between you and other traffic is at intersections. An intersection can be in the middle of an urban area or at a driveway on a residential street — anywhere traffic may cross your path of travel. Over half of motorcycle/car collisions are caused by drivers entering a rider's right-of-way. Oncoming cars that turn left in front of you, and cars on side streets that pull into your path, are the two biggest dangers. Your use of SIPDE [p. 17] at intersections is critical.



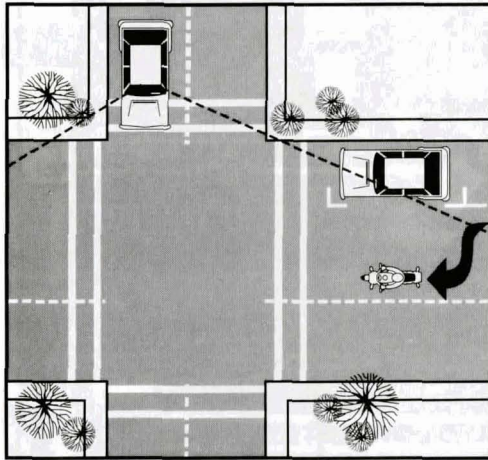
There are no guarantees that others see you. Never count on “eye contact” as a sign that a driver will yield. Too often, a driver looks right at a motorcyclist and still fails to “see” him. The only eyes that you can count on are your own. If a car can enter your path, assume that it will. Good riders are always “looking for trouble” — not to get into it, but to stay out of it.

Increase your chances of being seen at intersections. Ride with your headlight on in a lane position that provides the best view of oncoming traffic. Provide a space cushion around the motorcycle that permits you to take evasive action.

As you approach the intersection, select a lane position to increase your visibility to the driver. Cover the clutch and both brakes to reduce reaction time.

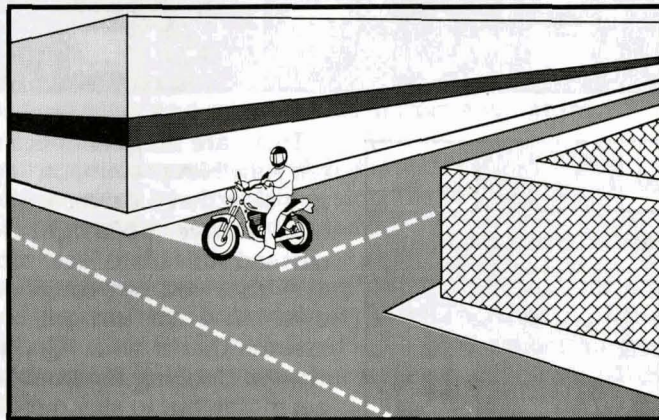
Reduce your speed. After entering the intersection, move away from oncoming vehicles preparing to turn. Do not change speed or position radically. The driver might think that you are preparing to turn.

Blind Intersections



If you approach a blind intersection, move to the portion of the lane that will bring you into another driver's field of sight at the earliest possible moment. In this picture, the rider has moved to the left portion of the lane — away from the parked car — so the driver on the cross street can see him as soon as possible.

Remember, the key is to see as much as possible and remain visible to others while protecting your space.

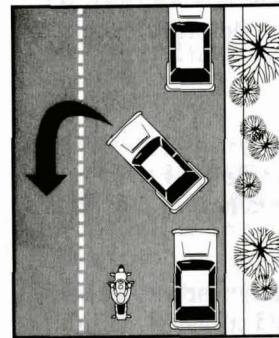


If you have a stop sign or stop line, stop there first. Then edge forward and stop again, just short of where the cross-traffic lane meets your lane. From that position, lean your body forward and look around buildings, parked cars, or bushes to see if anything is coming. Just make sure your front wheel stays out of the cross lane of travel while you're looking.

Passing Parked Cars

When passing parked cars, stay toward the left of your lane. You can avoid problems caused by doors opening, drivers getting out of cars, or people stepping from between cars. If oncoming traffic is present, it is usually best to remain in the center-lane position to maximize your space cushion.

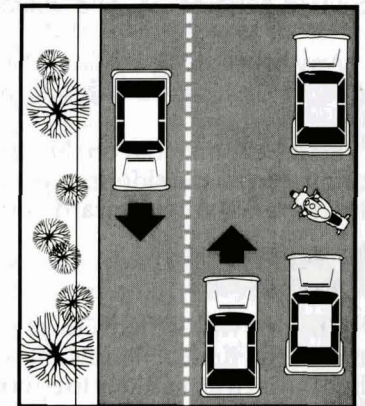
A bigger problem can occur if the driver pulls away from the curb without checking for traffic behind. Even if he does look, he may fail to see you. In either event, the driver might cut into your path. Slow down or change lanes to make room for someone cutting in.



Cars making a sudden U-turn are the most dangerous. They may cut you off entirely, blocking the whole roadway and leaving you with no place to go. Since you can't tell what a driver will do, get the driver's attention. Sound your horn and continue with caution.

Parking at the Roadside

Angle your motorcycle to see in both directions without straining or having the cycle in the lane of travel. A clear view is particularly important to turn across a lane of traffic. When possible, back into the parking spot to ride the motorcycle out into traffic.



6. Making eye contact with other drivers:

- A. is a good sign that they see you.
- B. is important when approaching an intersection.
- C. doesn't mean that the driver will yield.
- D. decreases your chances of being involved in a collision.

SEE AND BE SEEN

In collisions with motorcyclists, drivers often say that they never saw the motorcycle. From ahead or behind, a motorcycle's outline is much smaller than a car's. Also, it's hard to see something you are not looking for, and most drivers are not looking for motorcycles. More likely, they are looking *through* the skinny, two-wheeled silhouette in search of cars that may pose a problem to them.

Even if a driver does see you coming, you aren't necessarily safe. Smaller vehicles appear farther away, and seem to be traveling slower than they actually are. It is common for drivers to pull out in front of motorcyclists, thinking they have plenty of time. Too often, they are wrong.

However, you can do many things to make it easier for others to recognize you and your cycle.

Clothing

Most collisions occur in broad daylight. Wear bright clothing to increase your chances of being seen. Remember, your body is half of the visible surface area of the rider/cycle unit.

Bright orange, yellow or green jackets or vests are your best bets for being seen. Your helmet can do more than protect you in a collision. Brightly colored helmets can help others see you.

Any bright color is better than drab or dark colors. Reflective or bright colored clothing (helmet and jacket or vest) is best.

Reflective material on the sides of the helmet and vest will help drivers coming from the side spot you. Reflective material can also be a big help for drivers coming toward you or from behind.

Headlight

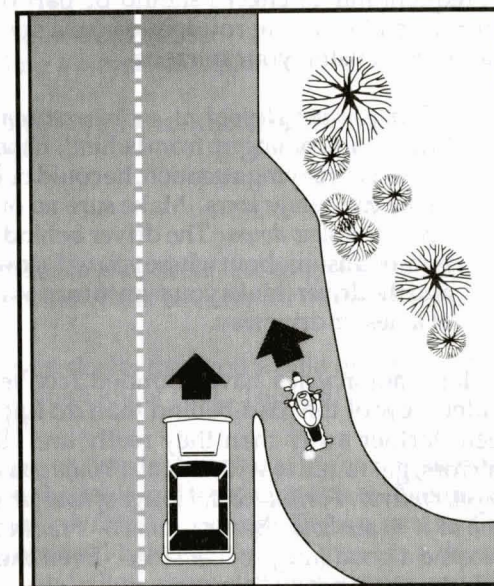
The best way to help others see your motorcycle is to keep the headlight on — at all times. Studies show that, during the day, a motorcycle with its light on is twice as likely to be noticed. Also, use of the high beam in daylight increases the likelihood that oncoming drivers will see you.

Signals

The signals on a motorcycle are similar to those on a car. They tell others what you plan to do. However, due to a rider's added vulnerability, signals are even more important. Use them anytime you plan to change lanes. Use them even when you think no one else is around. It's the car you don't see that's going to give you the most trouble. Your signal lights also make you easier to spot. That's why it's a good idea to use your turn signals even when what you plan to do is obvious.

When you enter onto a freeway, drivers approaching from behind are more likely to see your signal blinking and make room for you.

Turning your signal light on before each turn reduces confusion and frustration for the traffic around you. Once you turn, make sure your signal is off or a driver may pull directly into your path, thinking you plan to turn again. Use your signals at every turn so drivers can react accordingly. Don't make them guess what you intend to do.



Brake Light

Your motorcycle's brake light is usually not as noticeable as the brake lights on a car — particularly when your taillight is on. (It goes on with the headlight.) Help others notice you by flashing your brake light before you slow down. It is especially important to flash your brake light before:

- You slow more quickly than others might expect (turning off a high-speed highway).
- You slow where others may not expect it (in the middle of a block or at an alley).

If you are being followed closely, it's a good idea to flash your brake light before you slow. The tailgater may be watching you and not see something ahead that will make you slow down.

Using Your Mirrors

While it's most important to keep track of what's happening ahead, you can't afford to ignore situations behind. Traffic conditions change quickly. Knowing what's going on behind can help you make a safe decision about how to handle trouble ahead.

Frequent mirror checks should be part of your normal scanning routine. Make a special point of using your mirrors:

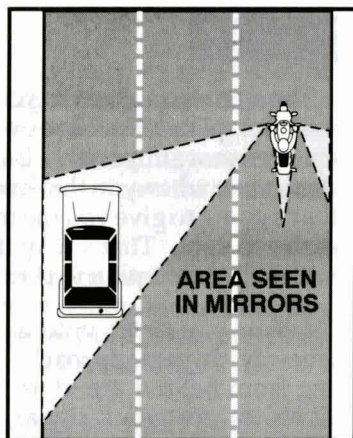
- *When you are stopped at an intersection.* Watch cars coming up from behind. If the driver isn't paying attention, he could be on top of you before he sees you.
- *Before you change lanes.* Make sure no one is about to pass you.
- *Before you slow down.* The driver behind may not expect you to slow, or may be unsure about where you will slow. For example, you signal a turn and the driver thinks you plan to turn at a distant intersection, rather than at a nearer driveway.

Most motorcycles have rounded (convex) mirrors. These provide a wider view of the road behind than do flat mirrors. They also make cars seem farther away than they really are. If you are not used to convex mirrors, get familiar with them. (*While you are stopped, pick out a parked car in your mirror. Form a mental image of how far away it is. Then, turn around and look at it to see how close you came.*) Practice with your mirrors until you become a good judge of distance. Even then, allow extra distance before you change lanes.

Head Checks

Checking your mirrors is not enough. Motorcycles have "blind spots" like cars. Before you change lanes, turn your head, and look to the side to spot a car about to pass you.

On a road with several lanes, check the far lane and the one next to you. A driver in the distant lane may head for the same space you plan to take.



Horn

Be ready to use your horn to get someone's attention quickly. It is a good idea to give a quick beep before passing anyone that may move into your lane.

Here are some situations:

- A driver in the lane next to you is driving too close to the vehicle ahead and may want to pass.
- A parked car has someone in the driver's seat.
- Someone is in the street, riding a bicycle or walking.

In an emergency, press the horn button loud and long. Be ready to stop or swerve away from the danger.

Riding at Night

At night it is harder for you to see and be seen. Picking your headlight or taillight out of the car lights around you is not easy for other drivers. To compensate, you should:

Reduce Your Speed — Ride even slower than you would during the day — particularly on roads you don't know well. This will increase your chances of avoiding a hazard.

Increase Distance — Distances are harder to judge at night than during the day. Your eyes rely upon shadows and light contrasts to determine how far away an object is and how fast it is coming. These contrasts are missing or distorted under artificial lights at night. Open up a three-second following distance. And allow more distance to pass and be passed.

Use the Car Ahead — The headlights of the car ahead can give you a better view of the road than even your high beam can. Taillights bouncing up and down can alert you to bumps or rough pavement.

Use Your High Beam — Get all the light you can. Use your high beam whenever you are not following or meeting a car. *Wear retroreflective materials* — vests, etc.

Be flexible about lane position. Change to whatever portion of the lane is best able to help you see, be seen, and keep an adequate space cushion.

7. Reflective clothing should:
- be worn at night.
 - be worn during the day.
 - not be worn.
 - be worn day and night.

COLLISION AVOIDANCE

No matter how careful you are, there will be times when you find yourself in a tight spot. Your chances of getting out safely depend on your ability to react quickly and properly. Often, a collision occurs because a rider is not prepared or skilled in collision-avoidance maneuvers.

Know when and how to stop or swerve, two skills critical to avoiding a collision. It is not always desirable or possible to stop quickly to avoid an obstacle. Riders must also be able to swerve around an obstacle. Determining the skill necessary for the situation is important as well.

Studies show that **most collision-involved riders:**

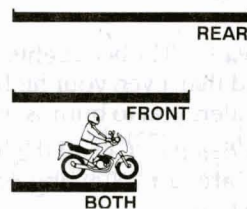
- Underbrake the front tire and overbrake the rear.
- Do not separate braking from swerving.

The following information offers some good advice.

Quick Stops

To stop quickly, apply both brakes at the same time. Don't be shy about using the front brake, but don't "grab" at it, either. Squeeze the brake lever steadily and firmly. Apply the front brake fully. If the front wheel locks, release the front brake then reapply firmly. At the same time, press down on the rear brake. If you accidentally lock the rear brake, keep it locked until you have completely stopped. Even with a locked rear wheel, you can control the cycle on a straightaway if it is *upright and going in a straight line*.

Always use both brakes at the same time to stop. The front brake can provide 70% or more of the potential stopping power.



If you must stop quickly *while turning or riding a curve*, it may not always be possible to straighten the motorcycle and then stop. If you must brake while leaning, apply the brakes and reduce the throttle. As you slow, you can reduce your lean angle and apply more brake pressure until the motorcycle is straight and maximum brake pressure is possible. If you "straighten" the handlebar in the last few feet of stopping, the motorcycle should be straight up and in balance.

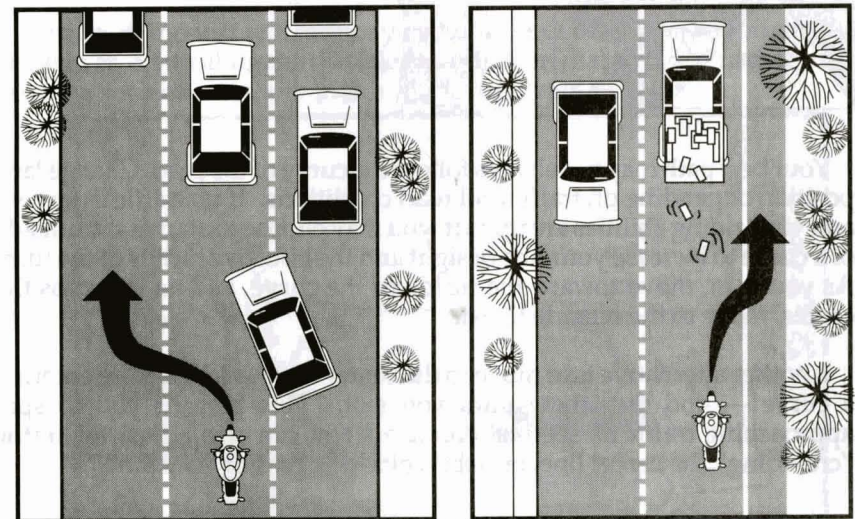
Swerving or Turning Quickly

Sometimes you may not have enough room to stop, even if you use both brakes properly. An object might appear suddenly in your path. Or the car ahead might squeal to a stop. The only way to avoid a collision may be to turn quickly, swerve, or ride over the obstacle.

A swerve is any sudden change in direction. It can be two quick turns, or a rapid shift to the side. Apply a small amount of hand pressure to the handgrip in your intended direction of escape. This will get the motorcycle to lean quickly. The sharper the turn(s), the more the bike must lean.

Keep your knees against the tank and your feet solidly on the pegs. Let the bike move underneath you. Make your escape route the target of your vision. Press on the opposite handgrip, once you clear the obstacle to return to your original direction of travel. To swerve to the left, push left then right to recover. To swerve to the right, push right then left.

Try to stay in your own lane. Change lanes only if you have enough time to make sure there are no vehicles in the other lane. You should be able to squeeze by most obstacles without leaving your lane.



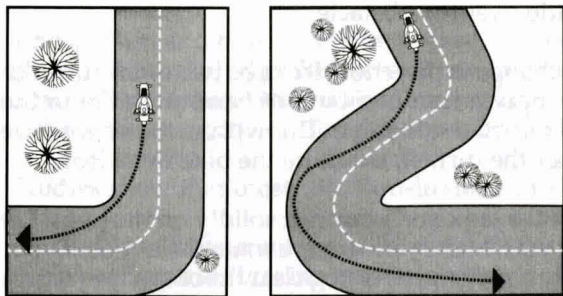
SWERVE, THEN BRAKE

BRAKE, THEN SWERVE

IF BRAKING IS REQUIRED, SEPARATE IT FROM SWERVING. Brake before or after — never while swerving.

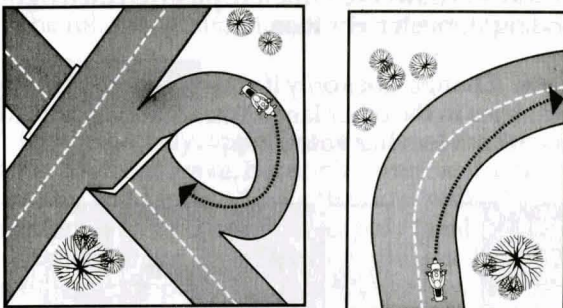
Riding a Curve

A primary cause of single-vehicle collisions is motorcyclists running wide in a curve or turn and colliding with the roadway or a fixed object.



Every curve is different. Be alert to whether a curve remains constant, gradually widens, gets tighter, or involves multiple turns.

Ride within your skill level and posted speed limits.



Your best path may not always follow the curve of the road. Change lane position depending on traffic and road conditions. If no traffic is present and your riding abilities are up to it, you may choose to start at the outside of a curve to increase your line of sight and the effective radius of the turn. As you turn, move toward the inside of the curve, and as you pass the center, move to the outside to exit.

Another alternative is to move to the center of your lane before entering a curve — and stay there until you exit. This permits you to spot approaching traffic as soon as possible. You can also adjust for traffic “crowding” the center line, or debris blocking part of your lane.

8. The best way to stop quickly is to:
- A. use the front brake only.
 - B. use the rear brake first.
 - C. throttle down and use the front brake.
 - D. use both brakes at the same time.

HANDLING DANGEROUS SURFACES

Your chance of falling or being involved in a collision increases whenever you ride across:

- Uneven surfaces or obstacles.
- Slippery surfaces.
- Railroad tracks.
- Grooves and gratings.

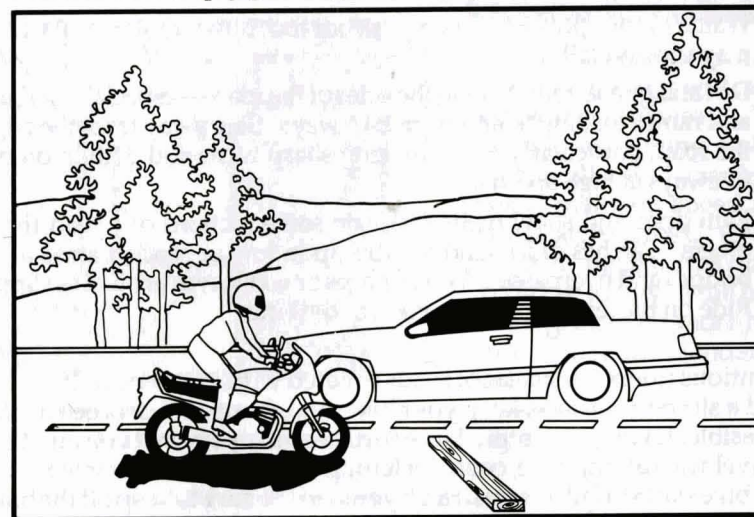
Uneven Surfaces and Obstacles

Watch for uneven surfaces such as bumps, broken pavement, potholes, or small pieces of highway trash.

First, determine if it is possible to go over the obstacle. Approach it at as close to a 90° angle as possible. Look where you want to go to control your path of travel. If you have to ride over the obstacle, you should:

- Slow down to reduce the jolt if time permits.
- Make sure the motorcycle is straight up.
- Rise slightly off the seat with your weight on the footpegs to absorb the shock with your knees and elbows.

Rising off the seat will reduce your chances of being thrown off the bike. However, controlling the throttle can be somewhat tricky. Practice this in an area such as an empty parking lot away from traffic.



If you ride over an object on the street, pull off the road and check your tires and rims for damage before riding any farther.

Slippery Surfaces

Motorcycles handle better when ridden on surfaces that permit good traction. Surfaces that provide poor traction include:

- Wet pavement, particularly just after it starts to rain and before surface oil washes to the side of the road.
- Gravel roads, or where sand and gravel collect.
- Mud, snow, and ice.
- Lane markings, steel plates and manhole covers, especially when wet.

To ride safely on slippery surfaces:

Reduce Speed — Slow down before you get to a slippery surface to lessen your chances of skidding when stopping or turning. Your motorcycle needs more distance to stop. It is particularly important to reduce speed before entering wet curves.

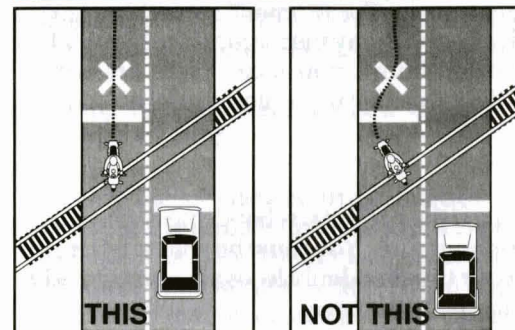
Avoid Sudden Moves — Any sudden change in speed or direction can cause a skid. Be as smooth as possible when you speed up, shift gears, turn or brake.

Use Both Brakes — The front brake is more effective even on a slippery surface. Squeeze the brake lever gradually to avoid locking the front wheel.

- The center of a lane can be hazardous when wet. When it starts to rain, ride in the tire tracks left by cars. Often, the left tire track will be the best position, depending on traffic and other road conditions as well.
- Watch for oil spots when you put your foot down to stop or park. You may slip and fall.
- Dirt and gravel collect along the sides of the road — especially on curves and ramps leading to and from highways. Stay away from the edge of the road, particularly when making sharp turns and getting on or off freeways at high speeds.
- Rain dries and snow melts faster on some sections of a road than on others. Patches of ice tend to crop up in low or shaded areas and on bridges and overpasses. Wet surfaces or wet leaves are just as slippery. Ride on the least slippery portion of the lane.

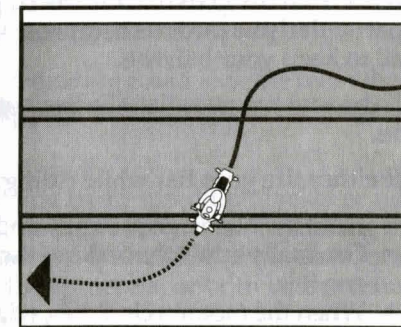
Cautious riders steer clear of roads covered with ice or snow. If you can't avoid a slippery surface, keep your bike straight up and proceed as *slowly* as possible. If you encounter a large surface so slippery that you must coast, or travel at a walking pace, consider letting your feet skim along the surface. If the bike starts to fall, you can catch yourself. Be sure to keep off the brakes. If possible, squeeze the clutch and coast. Attempting this maneuver at anything other than the slowest of speeds could prove hazardous.

Railroad Tracks, Trolley Tracks and Pavement Seams



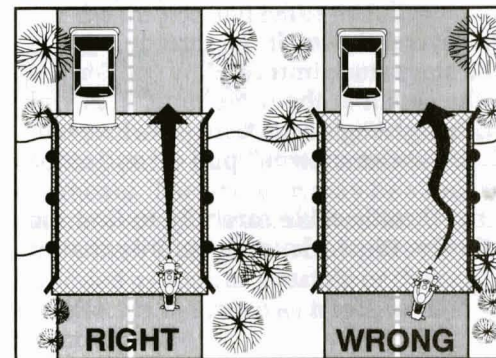
Usually it is safer to ride straight within your lane to cross tracks. Turning to take tracks head-on (at a 90° angle) can be more dangerous — your path may carry you into another lane of traffic.

Move far enough away from tracks, ruts, or pavement seams that run parallel to your course to cross at an angle of at least 45°. Then, make a quick, sharp turn. Edging across could catch your tires and throw you off balance.



Grooves and Gratings

Riding over rain grooves or bridge gratings will cause a motorcycle to weave. The uneasy, wandering feeling is generally not hazardous. Relax, maintain speed and ride straight across. Crossing at an angle forces riders to zigzag to stay in the lane. The zigzag is far more hazardous than the wandering feeling.



9. When it starts to rain it is usually best to:
- ride in the center of the lane.
 - pull off to the side until the rain stops.
 - ride in the tire tracks left by cars.
 - increase your speed.

MECHANICAL PROBLEMS

You can find yourself in an emergency the moment something goes wrong with your motorcycle. In dealing with any mechanical problem, take into account the road and traffic conditions you face. Here are some guidelines that can help you handle mechanical problems safely.

Tire Failure

You will seldom hear a tire go flat. If the cycle starts handling differently, it may be a tire failure. This can be dangerous. You must be able to tell from the way the cycle reacts. If one of your tires suddenly loses air, react quickly to keep your balance. Pull off and check the tires.

If the front tire goes flat, the steering will feel "heavy." A front-wheel flat is particularly hazardous because it affects your steering. You have to steer well to keep your balance.

If the rear tire goes flat, the back of the motorcycle will jerk from side to side.

If either tire goes flat while riding:

- Hold the handlegrips firmly and keep a straight course.
- Gradually apply the brake of the tire that isn't flat, if you are sure which one it is.
- When the motorcycle slows, edge to the side of the road and stop.

Stuck Throttle

Twist the throttle back and forth several times. If the throttle cable is stuck, this may free it. If the throttle stays stuck immediately operate the engine cut-off switch and pull in the clutch at the same time. This will remove power from the rear wheel, though engine noise may not immediately decline. Once the motorcycle is "under control," pull off and stop.

After you have stopped, check the throttle cable carefully to find the source of the trouble. Make certain the throttle works freely before you start to ride again.

Wobble

A "wobble" occurs when the front wheel and handlebars suddenly start to shake from side to side at any speed. Most wobbles can be traced to improper loading, unsuitable accessories, or incorrect tire pressure. If you are carrying a heavy load, lighten it. If you can't, shift it. Center the weight lower and farther forward on the cycle. Make sure tire pressure, spring preload, air shocks, and dampers are at the settings recommended for that much weight. Make sure windshields and fairings are mounted properly.

Check for poorly adjusted steering; worn steering parts; a front wheel that is bent, misaligned, or out of balance; loose wheel bearings or spokes; and swingarm bearings. If none of these are determined to be the cause, have the motorcycle checked out thoroughly by a qualified professional.

Trying to "accelerate out of a wobble" will only make the cycle more unstable. Instead:

- Grip the handlebars firmly, but don't fight the wobble.
- Close the throttle gradually to slow the motorcycle. Do not apply the brakes; braking could make the wobble worse.
- Move your weight as far forward and down as possible.
- Pull off the road as soon as you can to fix the problem.

Chain Problems

A chain that slips or breaks while you're riding could lock the rear wheel and cause your cycle to skid. Chain slippage or breakage can be avoided by proper maintenance.

Slippage — If the chain slips when you try to speed up quickly or ride uphill, pull off the road. Check the chain and sprockets. Tightening the chain may help. If the problem is a worn or stretched chain or worn or bent sprockets, replace the chain, the sprockets, or both before riding again.

Breakage — You'll notice an instant loss of power to the rear wheel. Close the throttle and brake to a stop.

Engine Seizure

When the engine "locks" or "freezes" it is usually low on oil. The engine's moving parts can't move smoothly against each other, and the engine overheats. The first sign may be a loss of engine power or a change in the engine's sound. Squeeze the clutch lever to disengage the engine from the rear wheel. Pull off the road and stop. Check the oil. If needed, oil should be added as soon as possible or the engine will seize. When this happens, the effect is the same as a locked rear wheel. Let the engine cool before restarting.

10. If your motorcycle starts to wobble:
- accelerate out of the wobble.
 - use the brakes gradually.
 - grip the handlebars firmly and close the throttle gradually.
 - downshift.

ANIMALS

Naturally, you should do everything you safely can to avoid hitting an animal. If you are in traffic, however, remain in your lane. Hitting something small is less dangerous to you than hitting something big — like a car.

Motorcycles seem to attract dogs. If you are chased, shift down and approach the animal slowly. As you approach it, speed up and leave the animal behind. Don't kick at an animal. Keep control of your motorcycle, and look to where you want to go.

FLYING OBJECTS

From time to time riders are struck by insects, cigarettes thrown from cars, or pebbles kicked up by the tires of the vehicle ahead. If you are wearing face protection, it might get smeared or cracked, making it difficult to see. Without face protection, an object could hit you in the eye, face, or mouth. Whatever happens, keep your eyes on the road and your hands on the handlebars. When safe, pull off the road and repair the damage.

GETTING OFF THE ROAD

If you need to leave the road to check the motorcycle (or just to rest for a while), be sure you:

- **Check the roadside** — Make sure the surface of the roadside is firm enough to ride on. If it is soft grass, loose sand, or if you're just not sure about it, slow way down before you turn onto it.
- **Signal** — Drivers behind might not expect you to slow down. Give a clear signal that you will be slowing down and changing direction. Check your mirror and make a head check before you take any action.
- **Pull off the road** — Get as far off the road as you can. It can be very hard to spot a motorcycle by the side of the road. You don't want someone else pulling off at the same place you are.
- **Park carefully** — Loose and sloped shoulders make setting the stand difficult.

11. If you are chased by an animal:

- A. kick it away.
- B. stop until the animal loses interest.
- C. swerve around the animal.
- D. approach the animal slowly, then speed up.

CARRYING PASSENGERS AND CARGO

Only experienced riders should carry passengers or large loads. The extra weight changes the way the motorcycle handles, balances, turns, speeds up, and slows down. Before taking a passenger or heavy load on the street, practice away from traffic.

Equipment

To carry passengers safely:

- Equip and adjust your motorcycle to carry passengers.
- Instruct the passenger before you start.
- Adjust your riding technique for the added weight.

Equipment should include:

- **A proper seat** — large enough to hold both of you without crowding. You should not sit any farther forward than you usually do.
- **Footpegs** — for the passenger. A firm footing prevents your passenger from falling off and pulling you off, too.
- **Protective equipment** — the same protective gear recommended for operators.

Adjust the suspension to handle the additional weight. Add a few pounds of pressure to the tires if you carry a passenger. (Check your owner's manual.) While your passenger sits on the seat with you, adjust the mirror and headlight according to the change in the motorcycle's angle.

Instructing Passengers

Even if your passenger is a motorcycle rider, provide complete instructions before you start. Tell your passenger to:

- Get on the motorcycle after you have started the engine.
- Sit as far forward as possible without crowding you.
- Hold firmly to your waist, hips, or belt.
- Keep both feet on the pegs, even when stopped.
- Keep legs away from the muffler(s).
- Stay directly behind you, leaning as you lean.
- Avoid unnecessary talk or motion.

Also, tell your passenger to tighten his or her hold when you (1) approach surface problems, (2) are about to start from a stop, and (3) warn that you are going to make a sudden move.

Your motorcycle will respond more slowly with a passenger on board. The heavier your passenger, the longer it will take to slow down, speed up, or turn — especially on a light cycle.

- Ride a little slower, especially when taking curves, corners, or bumps.
- Start slowing earlier as you approach a stop.
- Open up a larger cushion of space ahead and to the sides.
- Wait for larger gaps to cross, enter, or merge in traffic.

Warn your passenger of special conditions — when you will pull out, stop quickly, turn sharply, or ride over a bump. Turn your head slightly to make yourself understood, but keep your eyes on the road ahead.

Most motorcycles are not designed to carry much cargo. Small loads can be carried safely if positioned and fastened properly.

- **Keep the Load Low** — Fasten loads to the seat, or put them in saddle bags. Piling loads against a sissybar or frame on the back of the seat raises the cycle's center of gravity and disturbs its balance.
- **Keep the Load Forward** — Place the load over, or in front of, the rear axle. Tankbags keep loads forward, but use caution when loading hard or sharp objects. Mounting loads behind the rear axle can affect how the cycle turns and brakes. It can also cause a wobble.
- **Distribute the Load Evenly** — Load saddlebags with about the same weight. An uneven load can cause the motorcycle to drift to one side.
- **Secure the Load** — Fasten the load securely with elastic cords (bungee cords). A tight load won't catch in the wheel or chain, causing it to lock up and skid. Rope tends to stretch and knots come loose, permitting the load to shift or fall.
- **Check the Load** — Stop and check the load every so often to make sure it has not worked loose or moved.

12. Passengers should:
- A. lean as you lean.
 - B. always sit upright.
 - C. sit as far back as possible.
 - D. never hold onto you.

GROUP RIDING

If you ride with others, do it in a way that promotes safety and doesn't interfere with the flow of traffic.

Keep the Group Small

Small groups make it easier and safer for car drivers who need to get around them. A small number isn't separated as easily by traffic or red lights. Riders won't always be hurrying to catch up. If your group is larger than four or five riders, divide it up into two or more smaller groups.

Keep the Group Together

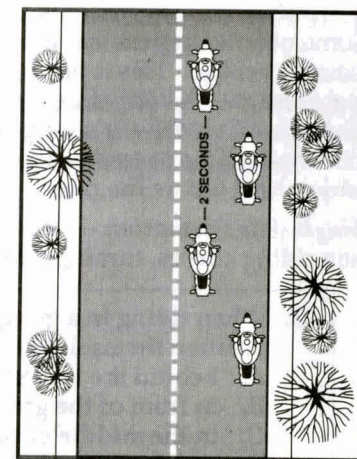
- **Plan** — The leader should look ahead for changes and signal early so "the word gets back" in plenty of time. Start lane changes early to permit everyone to complete the change.
- **Put Beginners Up Front** — Place inexperienced riders behind the leader, where more experienced riders can watch them.
- **Follow Those Behind** — Let the tailender set the pace. Use your mirrors to keep an eye on the person behind. If a rider falls behind, everyone should slow down a little to stay with the tailender.
- **Know the Route** — Make sure everyone knows the route. Then, if someone is separated they won't have to hurry to keep from getting lost or taking a wrong turn.

Keep Your Distance

Maintain close ranks at a safe distance. A close group takes up less space on the highway, is easier to see and is less likely to be separated. However, it must be done properly.

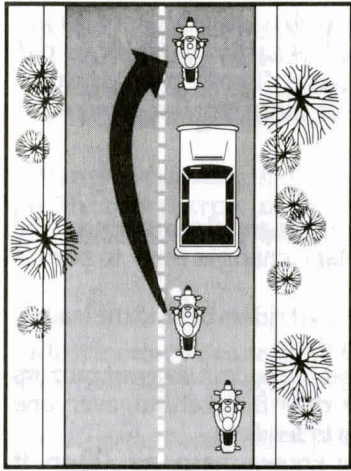
Don't Pair Up — Never operate directly alongside another rider. There is no place to go if you have to avoid a car or something on the road. To talk, wait until you are both stopped.

Staggered Formation — This is the best way to keep ranks close yet maintain an adequate space cushion. The leader rides in the left side of the lane, while the second rider stays one second behind in the right side of the lane.

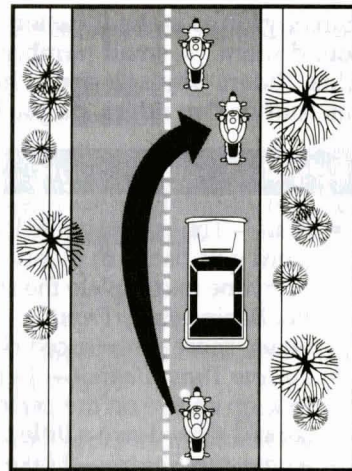


A third rider maintains in the left position, two seconds behind the first rider. The fourth rider would keep a two-second distance behind the second rider. This formation keeps the group close and permits each rider a safe distance from others ahead, behind and to the sides.

Passing in Formation — Riders in a staggered formation should pass one at a time.



First, the lead rider should pull out and pass when it is safe. After passing, the leader should return to the left position and continue riding at passing speed to open room for the next rider.



When the first rider passes safely, the second rider should move up to the left position and watch for a safe chance to pass. After passing, this rider should return to the right position and open up room for the next rider.

Some people suggest that the leader should move to the right side after passing a vehicle. This is not a good idea. It encourages the second rider to pass and cut back in before there is a large enough space cushion in front of the passed vehicle. It's simpler and safer to wait until there is enough room ahead of the passed vehicle to allow each rider to move into the same position held before the pass.

Single-File Formation — It is best to move into a single-file formation when riding curves, turning, entering or leaving a highway.

13. When riding in a group, inexperienced riders should position themselves:
- A. behind the leader.
 - B. in front of the group.
 - C. in the middle of the group.
 - D. beside the leader.

BEING IN SHAPE TO RIDE

Riding a motorcycle is a demanding and complex task. Skilled riders pay attention to the riding environment and to operating the motorcycle, identifying potential hazards, making good judgments, and executing decisions quickly and skillfully. Your ability to perform and respond to changing road and traffic conditions is influenced by how fit and alert you are. Alcohol and other drugs, more than any other factor, degrade your ability to think clearly and to ride safely. As little as one drink can have a significant effect on your performance.

Let's look at the risks involved in riding after drinking or using drugs. What to do to protect yourself and your fellow riders is also examined.

WHY THIS INFORMATION IS IMPORTANT

Alcohol is a major contributor to motorcycle collisions, particularly fatal collisions. Studies show that 40% to 45% of all riders killed in motorcycle crashes had been drinking. Only one-third of those riders had a blood alcohol concentration above legal limits. The rest had only a few drinks in their systems—enough to impair riding skills. In the past, drug levels have been harder to distinguish or have not been separated from drinking violations for the traffic records. But riding “under the influence” of either alcohol or drugs poses physical and legal hazards for every rider.

Drinking and drug use is as big a problem among motorcyclists as it is among automobile drivers. Motorcyclists, however, are more likely to be killed or severely injured in a collision. Injuries occur in 90% of motorcycle collisions and 33% of automobile collisions that involve abuse of substances. On a yearly basis, 2,500 motorcyclists are killed and about 50,000 seriously injured in this same type of collision. These statistics are too overwhelming to ignore.

By becoming knowledgeable about the effects of alcohol and other drugs you will see that riding and substance abuse don't mix. Take positive steps to protect yourself and prevent others from injuring themselves.

ALCOHOL AND OTHER DRUGS IN MOTORCYCLE OPERATION

No one is immune to the effects of alcohol or drugs. Friends may brag about their ability to hold their liquor or perform better on drugs, but alcohol or drugs make them less able to think clearly and perform physical tasks skillfully. Judgment and the decision-making processes needed for vehicle operation are affected long before legal limitations are reached.

Many over-the-counter, prescription, and illegal drugs have side effects that increase the risk of riding. It is difficult to accurately measure the involvement of particular drugs in motorcycle collisions. But we do know what effects various drugs have on the process involved in riding a motorcycle. We also know that the combined effects of alcohol and other drugs are more dangerous than either is alone.

ALCOHOL IN THE BODY

Alcohol enters the bloodstream quickly. Unlike most foods and beverages, it does not need to be digested. Within minutes after being consumed, it reaches the brain and begins to affect the drinker. The major effect alcohol has is to slow down and impair bodily functions — both mental and physical. Whatever you do, you do less well after consuming alcohol.

Blood Alcohol Concentration

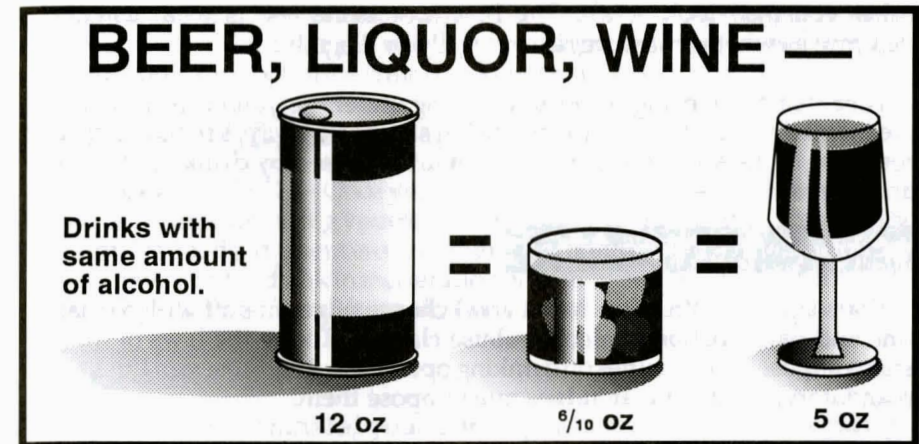
Your Blood Alcohol Concentration or BAC is the amount of alcohol in relation to blood in the body. Generally, alcohol can be eliminated in the body at the rate of almost one drink per hour. But a variety of other factors may also influence the level of alcohol retained. The more alcohol in your blood, the greater the degree of impairment.

Three factors play a major part in determining BAC:

- The amount of alcohol you consume.
- How fast you drink.
- Your body weight.

Other factors also contribute to the way alcohol affects your system. Your sex, physical condition and food intake are just a few that may cause your BAC level to be even higher. But the full effects of these are not completely known. Alcohol may still accumulate in your body even if you are drinking at a rate of one drink per hour. Abilities and judgment can be affected by that one drink.

The typical drinks pictured below contain six-tenths of an ounce of alcohol. A 12-ounce can of beer, a mixed drink with one shot of liquor, or a 5-ounce glass of wine all contain the same amount of alcohol.



The faster you drink, the more alcohol accumulates in your body. At most, the body can only burn off one drink in an hour. If you drink two drinks in an hour, at the end of that hour, at least one drink will remain in your bloodstream.

Without taking into account any of the other factors, the formula below illustrates the LEAST amount of drinks remaining in the bloodstream:

Drinks consumed - hours = drinks left

A person drinking

- 8 drinks in 4 hours would have at least 4 drinks remaining in their system.
- 7 drinks in 3 hours would have at least 4 drinks remaining in their system.

There are times when a larger person may not accumulate as high a concentration of alcohol for each drink consumed. They have more blood and other bodily fluids. But because of individual differences it is better not to take the chance that abilities and judgment have not been affected. Whether or not you are legally intoxicated is not the real issue. Impairment of judgment and skills begins well below the legal limit.

ALCOHOL AND THE LAW

In most states, a person with a BAC of .10% or above is considered intoxicated; in others the legal limit is .08% or .05%. It doesn't matter how sober you may look or act. The breath or urine test is what usually determines whether you are riding legally or illegally.

Your chances of being stopped for riding under the influence of alcohol are increasing. Law enforcement is being stepped up across the country in response to the senseless deaths and injuries caused by drinking drivers and riders.

Consequences of Conviction

Years ago, first offenders had a good chance of getting off with a small fine and participation in alcohol-abuse classes. Today the laws of most states impose stiff penalties on drinking operators. And those penalties are mandatory, meaning that judges must impose them.

If you are convicted of riding under the influence of alcohol or drugs, you may receive any of the following penalties:

- **License Suspension** — Mandatory suspension for conviction, arrest or refusal to submit to a breath test.
- **Fines** — Severe fines are another aspect of a conviction usually levied with a license suspension.
- **Community Service** — Performing tasks such as picking up litter along the highway, washing cars in the motor-vehicle pool, or working at an emergency ward.
- **Costs** — Additional lawyer's fees to pay; lost work time spent in court or alcohol-education programs; public transportation costs (while your license is suspended); and the added psychological costs of being tagged a "drunk driver."

IOWA SUMMARY

In Iowa a person is legally intoxicated when the blood alcohol content is .10 or higher. In addition to a fine and license revocation, a conviction of operating a motor vehicle while under the influence of alcohol or drugs in Iowa carries a mandatory jail sentence.

However, alcohol begins to affect you long before you are intoxicated. The first thing alcohol affects is your judgment, so even if you think you can ride safely you may be wrong. Therefore, to be safe don't drink and ride!

MINIMIZE THE RISKS

Your ability to judge how well you are riding is affected first. Although you may be performing more and more poorly, you think you are doing better and better. The result is that you ride confidently, taking greater and greater risks. Minimize the risks of drinking and riding by taking steps before you drink. Control your drinking or control your riding.

Control Drinking

- **DON'T DRINK** — Once you start, your resistance becomes weaker. Setting a limit or pacing yourself are poor alternatives at best. Your ability to exercise good judgment is one of the first things affected by alcohol. Even if you have tried to drink in moderation, you may not realize to what extent your skills have suffered from alcohol's fatiguing effects.

Control Riding

If you haven't controlled your drinking, you must control your riding.

- **Leave the bike home** — so you won't be tempted to ride. Arrange another way to get home.
- **Wait** — If you exceed your limit, wait until your system eliminates the alcohol and its fatiguing effects.

STEP IN TO PROTECT FRIENDS

People who have had too much to drink are unable to make a responsible decision. It is up to others to step in and keep them from taking too great a risk. No one wants to do this — it's uncomfortable, embarrassing and thankless. You are rarely thanked for your efforts at the time. But the alternatives are often worse.

There are several ways to keep friends from hurting themselves:

- **Arrange a safe ride** — Provide alternative ways for them to get home.
- **Slow the pace of drinking** — Involve them in other activities.
- **Keep them there** — Use any excuse to keep them from getting on their bike. Serve them food and coffee to pass the time. Explain your concerns for their risks of getting arrested or hurt, or hurting someone else.
- **Keep the bike there** — If you can't control the rider, control the bike. Take the keys or temporarily disable the bike (e.g., loosen or switch the plug leads enough so they won't fire).

It helps to enlist support from others when you decide to step in. The more people on your side, the easier it is to be firm and the harder it is for the rider to resist. While you may not be thanked at the time, you will never have to say, "If only I had..."

14. If you wait an hour for each drink before riding:
- A. you cannot be arrested for drinking and riding.
 - B. your riding skills will not be affected.
 - C. side effects from the drinking may still remain.
 - D. you will be okay as long as you ride slowly.

FATIGUE

Riding a motorcycle is more tiring than driving a car. On a long trip, you'll tire sooner than you would in a car. Avoid riding when tired. Fatigue can affect your control of the cycle.

- **Protect yourself from the elements** — Wind, cold, and rain make you tire quickly. Dress warmly. A windshield is worth its cost if you plan to ride long distances.
- **Limit your distance** — Experienced riders seldom try to ride more than about six hours a day.
- **Take frequent rest breaks** — Stop, and get off the cycle at least every two hours.
- **Don't drink or use drugs** — Artificial stimulants often result in extreme fatigue or depression when they start to wear off. Riders are unable to concentrate on the task at hand.

15. To avoid fatigue, you should ride no more than:
- A. 2 hours a day.
 - B. 4 hours a day.
 - C. 6 hours a day.
 - D. 10 hours a day.

Answers: 1-C, 2-D, 3-D, 4-A, 5-B, 6-C, 7-B, 8-D, 9-C, 10-C, 11-D, 12-A, 13-A, 14-C, 15-C

EARNING YOUR LICENSE

Safe riding requires knowledge and skill. Licensing tests are the best measurement of the skills necessary to operate safely in traffic. Assessing your own skills is not enough. People often overestimate their own abilities. It's even harder for friends and relatives to be totally honest about your skills. Licensing exams are designed to be scored more objectively.

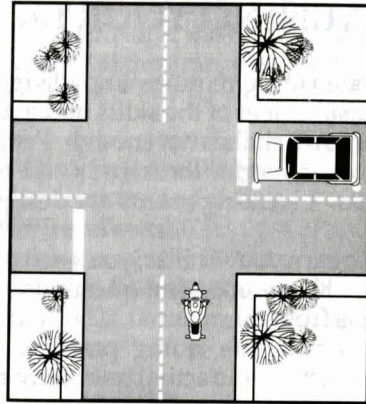
To earn your license, you must pass a knowledge test and an on-cycle skill test. Knowledge test questions are based on information, practices, and ideas from this manual. They require that you know and understand road rules and safe riding practices. An on-cycle skill test will either be conducted in an actual traffic environment or in a controlled, off-street area.

KNOWLEDGE TEST — Sample Questions

Answers are printed at the bottom of the next page.

1. It is MOST important to flash your brake light when:
 - A. someone is following too closely.
 - B. you will be slowing suddenly.
 - C. there is a stop sign ahead.
 - D. your signals are not working.
2. The FRONT brake supplies how much of the potential stopping power?
 - A. About one-quarter.
 - B. About one-half.
 - C. About three-quarters.
 - D. All of the stopping power.
3. To swerve correctly:
 - A. shift your weight quickly.
 - B. turn the handlebars quickly.
 - C. push the handgrip in the direction of the turn.
 - D. push the handgrip in the opposite direction of the turn.
4. If a tire goes flat while riding, it is usually best to:
 - A. hold the handlegrips firmly and stay off the brakes.
 - B. shift your weight toward the good wheel and brake.
 - C. brake on the good wheel and steer to the right.
 - D. use both brakes and stop quickly.

5. The car is waiting to enter the intersection. It is best to:
- make eye contact with the driver.
 - reduce speed and be ready to react.
 - maintain speed and position.
 - maintain speed and move right.



ON-CYCLE SKILL TEST

Basic vehicle control and collision-avoidance skills are included in on-cycle tests to determine your ability to handle normal and hazardous traffic situations. For example, you may be tested for your ability to:

- Know your motorcycle and your riding limits.
- Accelerate, brake, and turn safely.
- See, be seen and communicate with others.
- Adjust speed and position to the traffic situation.
- Stop, turn and swerve quickly.
- Make critical decisions and carry them out.

Examiners may score on factors related to safety such as:

- Selecting safe speeds to perform maneuvers.
- Choosing the correct path and staying within boundaries.
- Completing normal and quick stops.
- Completing normal and quick turns, or swerves.

TO RECEIVE A MOTORCYCLE LICENSE WITH FULL PRIVILEGES, MOST STATES REQUIRE THAT MANUEVERS BE PERFORMED AS DESIGNED.

On-cycle skill tests are not designed for sidecars or three-wheel vehicles. Those vehicles maneuver differently than a two-wheeled motorcycle. Depending on the state, a driver examiner may follow you on a car test-route. Restrictions (sidecar, three-wheeled vehicle) may be added until completion of a two-wheeled cycle test.

Knowledge Test Answers: 1-B, 2-C, 3-C, 4-A, 5-B

MOTORCYCLES MAKE SENSE — SO DOES PROFESSIONAL TRAINING

They are inexpensive to operate, fun to ride and easy to park. Unfortunately, many riders never learn the critical skills needed to ride safely.

Professional training for beginning and experienced riders prepares them for real-world traffic situations. *Motorcycle RiderCourses* teach and improve skills such as:

- effective turning
- braking maneuvers
- protective apparel selection
- obstacle avoidance
- traffic strategies
- maintenance

**FOR THE BEGINNING OR EXPERIENCED *RiderCourse*
NEAREST YOU, CALL TOLL FREE:
800-447-4700**

Printing and Distribution
Courtesy of



MOTORCYCLE SAFETY FOUNDATION
2 Jenner Street, Suite 150
Irvine, Ca 92718-3812

Second Revision - December 1978

Third Revision - February 1981

Fourth Revision - January 1983

Fifth Revision - October 1987

Sixth Revision - April 1991

Seventh Revision - September 1992

Printed in U.S.A.

The Motorcycle Safety Foundation's purpose is improving the safety of motorcyclists on the nation's streets and highways. In an attempt to reduce motorcycle accidents and injuries, the Foundation has programs in rider education, licensing improvement, public information and statistics. These programs are designed for both motorcyclists and motorists. A national, non-profit organization, MSF is sponsored by five U.S. motorcycle distributors: Honda, Yamaha, Kawasaki, Suzuki and BMW.

The information contained in this publication is offered for the benefit of those who have an interest in riding motorcycles. The information has been compiled from publications, interviews and observations of individuals and organizations familiar with the use of motorcycles, accessories, and training. Because there are many differences in product design, riding styles, Federal, State and local laws, there may be organizations and individuals who hold differing opinions. Consult your local regulatory agencies for information concerning the operation of motorcycles in your area. Although the Motorcycle Safety Foundation will continue to research, field test and publish responsible viewpoints on the subject, it disclaims any liability for the views expressed herein.



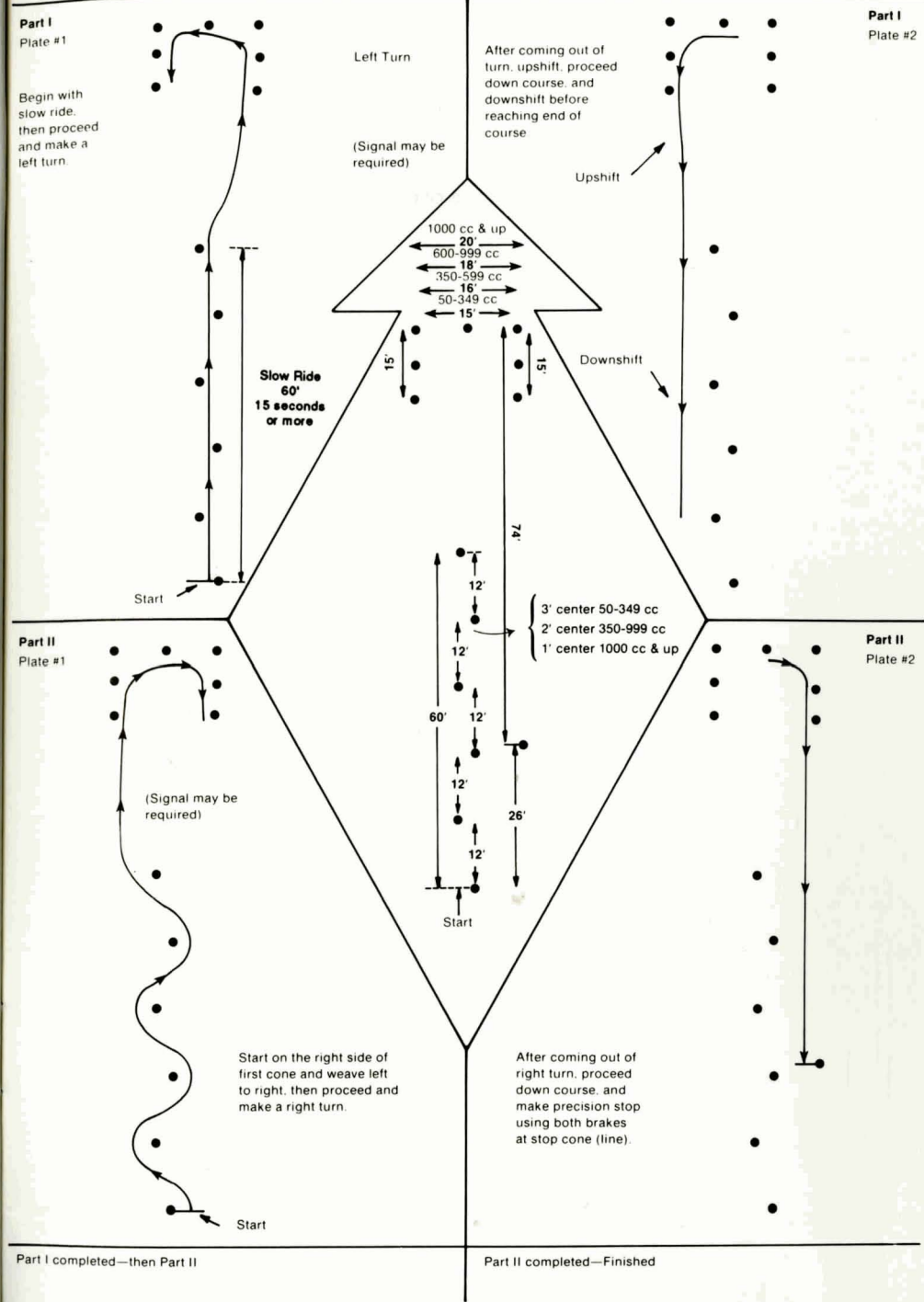
IOWA MOTORCYCLE SKILL TEST

UNSUCCESSFUL ATTEMPTS

- Hitting a cone or knocking a cone over
- Completing the slow ride in less than 15 seconds
- Not able to upshift or downshift
- Either foot touching the ground
- Stalling the engine after starting the exercise
- Driving off the course
- Failing to complete an exercise
- EACH APPLICANT WILL BE GIVEN A SECOND ATTEMPT AFTER AN UNSUCCESSFUL ATTEMPT

AUTOMATIC FAILURE

- Dropping your motorcycle
- Bringing the front wheel off the ground
- Running off the course out of control
- Having an accident, such as hitting a car or pole



Part I completed—then Part II

Part II completed—Finished

