

IOWA CATTLE ON FEED

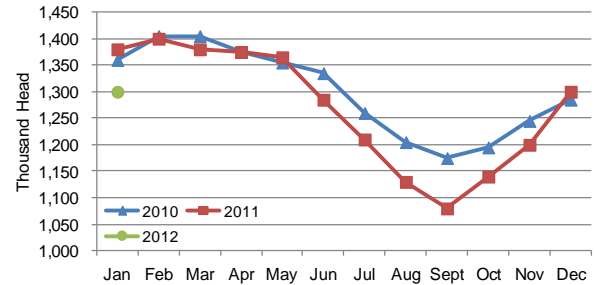
Cattle and calves on feed for slaughter market in Iowa for all feedlots totaled 1.30 million head on January 1, 2012, according to the USDA, National Agricultural Statistics Service, Iowa Field Office. The inventory was up 1 percent from December 1, 2011, but down 6 percent from January 1, 2011. Feedlots with a capacity greater than 1,000 head had 620,000 head on feed, up 2 percent from last month but down 3 percent from last year. Feedlots with a capacity less than 1,000 head had 680,000 head on feed, unchanged from last month but down 8 percent from last year.

Placements during December totaled 172,000 head, a decrease of 44 percent from last month and down 29 percent from last year. Feedlots with a capacity greater than 1,000 head placed 77,000 head, down 46 percent from last month and down 17 percent from last year. Feedlots with a capacity less than 1,000 head placed 95,000 head. This is down 42 percent from last month and down 37 percent from last year.

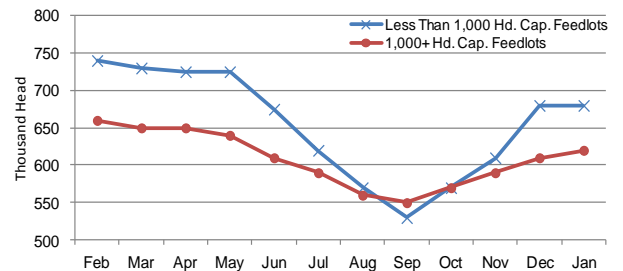
Marketings for December were 153,000 head, down 19 percent from last month but up 9 percent from last year. Feedlots with a capacity greater than 1,000 head marketed 63,000 head, down 37 percent from last month and down 21 percent from last year. Feedlots with a capacity less than 1,000 head marketed 90,000 head, unchanged from last month but up 50 percent from last year.

Other disappearance totaled 9,000 head.

Cattle on Feed, Inventory on all Feedlots, Iowa: 2010-2011



Cattle on Feed, Inventory by Feedlot Capacity, Iowa: Past 12 Months



All Cattle on Feed, Iowa

Item	Lots 1,000+ Head (1,000 Head)	Lots Less than 1,000 Head (1,000 Head)	All Lots (1,000 Head)
Cattle on Feed, December 1, 2011	610	680 ¹	1,290 ¹
December Placements	77	95	172
December Marketings	63	90	153
December Other Disappearance	4	5	9
Cattle on Feed, January 1, 2012	620	680	1,300

¹ Revised from previous month.

Cattle on Feed: Number on Feed, Placements, Marketings, and Other Disappearance by Month, 1,000+ Capacity Feedlots

[Cattle and calves on feed are animals for slaughter market being fed a ration of grain or other concentrates and are expected to produce a carcass that will grade select or better.]

State	Cattle on Feed January 1			Placements during December			Marketings during December			December Disappearance other than Slaughter ¹		
	2011 (1,000 Head)	2012 (1,000 Head)	'12 as % of '11 (Percent)	2010 (1,000 Head)	2011 (1,000 Head)	'11 as % of '10 (Percent)	2010 (1,000 Head)	2011 (1,000 Head)	'11 as % of '10 (Percent)	2010 (1,000 Head)	2011 (1,000 Head)	'11 as % of '10 (Percent)
Arizona	258	279	108	36	26	72	26	36	138	1	1	100
California	470	510	109	61	61	100	57	52	91	4	4	100
Colorado	1,080	1,150	106	160	170	106	165	170	103	5	10	200
Idaho	240	230	96	42	36	86	35	40	114	2	1	50
Iowa	640	620	97	93	77	83	80	63	79	3	4	133
Kansas	2,280	2,250	99	410	350	85	480	445	93	10	15	150
Nebraska	2,430	2,550	105	380	380	100	400	380	95	10	10	100
Oklahoma	375	375	100	55	45	82	58	52	90	2	3	150
South Dakota ..	260	260	100	45	37	82	39	37	95	1	5	500
Texas	2,840	2,940	104	420	400	95	400	430	108	20	30	150
Washington ...	209	232	111	36	44	122	39	45	115	2	3	150
Other States ..	432	465	108	51	57	112	51	46	90	5	5	100
United States ..	11,514	11,861	103	1,789	1,683	94	1,830	1,796	98	65	91	140

¹Includes death loss, movement from feedlots to pasture, and shipments to other feedlots for further feeding.

Cattle on Feed: Number on Feed by Class, 1,000+ Capacity Feedlots by Quarter, State, and United States, 2011-2012

State	Steers & Steer Calves			Heifers & Heifer Calves			Cows & Bulls		
	January 1, 2011	October 1, 2011	January 1, 2012	January 1, 2011	October 1, 2011	January 1, 2012	January 1, 2011	October 1, 2011	January 1, 2012
	(1,000 Head)	(1,000 Head)	(1,000 Head)	(1,000 Head)	(1,000 Head)	(1,000 Head)	(1,000 Head)	(1,000 Head)	(1,000 Head)
Arizona	255	277	276	3	3	3	0	0	0
California	405	425	440	65	63	69	0	2	1
Colorado	710	730	745	365	335	400	5	5	5
Idaho	116	136	123	108	82	106	16	2	1
Iowa	440	390	450	199	179	170	1	1	0
Kansas	1,220	1,220	1,160	1,055	1,090	1,085	5	10	5
Nebraska	1,520	1,290	1,530	895	905	980	15	15	40
Oklahoma	210	205	215	165	165	160	0	0	0
South Dakota ..	129	114	131	107	81	101	24	10	28
Texas	1,750	1,750	1,730	1,089	1,199	1,209	1	1	1
Washington ...	130	123	150	71	83	80	8	2	2
Other States ..	293	285	331	137	133	133	2	1	1
United States ..	7,178	6,945	7,281	4,259	4,318	4,496	77	49	84

Milk Cows and Production: Selected States, December 2010 and 2011

State	Milk Cows ¹		Milk Per Cow ²		Milk Production ²		
	2010	2011	2010	2011	2010	2011	Change from 2010
	(1,000 Head)	(1,000 Head)	(Pounds)	(Pounds)	(Million Pounds)	(Million Pounds)	(Percent)
Illinois	98	99	1,640	1,690	161	167	3.7
Indiana	171	174	1,685	1,760	288	306	6.3
Iowa	207	203	1,775	1,850	367	376	2.5
Kansas	122	123	1,805	1,780	220	219	-0.5
Michigan	361	370	1,920	1,950	693	722	4.2
Minnesota	470	465	1,605	1,635	754	760	0.8
Missouri	95	93	1,230	1,240	117	115	-1.7
Ohio	270	270	1,610	1,625	435	439	0.9
Wisconsin	1,265	1,265	1,705	1,750	2,157	2,214	2.6
23-State Total ³	8,387	8,486	1,791	1,818	15,025	15,425	2.7

¹ Includes dry cows, excludes heifers not yet fresh. ² Excludes milk sucked by calves. ³ As of February 2009, the 23 States are Arizona, California, Colorado, Florida, Idaho, Illinois, Indiana, Iowa, Kansas, Michigan, Minnesota, Missouri, New Mexico, New York, Ohio, Oregon, Pennsylvania, Texas, Utah, Vermont, Virginia, Washington, and Wisconsin.

All Layers and Egg Production: Selected States, December 2010 and 2011

[Data may not add to totals due to rounding. Data by type of flock not shown for some states to avoid disclosing individual operations, data included in United States totals.]

State	Table egg layers in flocks 30,000 & above		All layers on hand		Eggs per 100 layers		Total egg production		Table egg production	
	2010	2011	2010	2011	2010	2011	2010	2011	2010	2011
	(Thousands)	(Thousands)	(Thousands)	(Thousands)	(Number)	(Number)	(Million eggs)	(Million eggs)	(Million eggs)	(Million eggs)
Indiana	22,898	22,414	23,596	23,076	2,348	2,344	554	541	542	530
Iowa	52,526	51,239	53,363	52,135	2,299	2,329	1,227	1,214	1,215	1,198
Minnesota	9,990	9,550	10,449	10,052	2,412	2,388	252	240	244	231
Nebraska	9,321	9,013	9,371	9,063	2,476	2,593	232	235	232	235
North Carolina	5,776	5,798	13,252	12,706	2,083	2,101	276	267	143	140
Ohio	28,050	27,832	28,525	28,327	2,380	2,376	679	673	(D)	(D)
United States	281,070	280,164	342,661	338,209	2,311	2,344	7,920	7,929	6,850	6,888

(D) Withheld to avoid disclosing data for individual operations.

Agricultural Resource Management Survey (ARMS)

ARMS is an annual survey that collects information on the finances and production practices of U.S. farms.

By participating in ARMS, farmers and ranchers have an opportunity to provide accurate, real-world data that will help shape the policies, programs, and issues that affect them.

NASS will publish the farm economic data in the annual Farm Production Expenditures report on August 2, 2012.

As with all of its surveys, NASS keeps individual survey responses completely confidential, as required by law. The agency safeguards the privacy of all respondents, ensuring no individual respondent or operation can be identified.

BECAUSE BETTER DATA =
Better Decisions